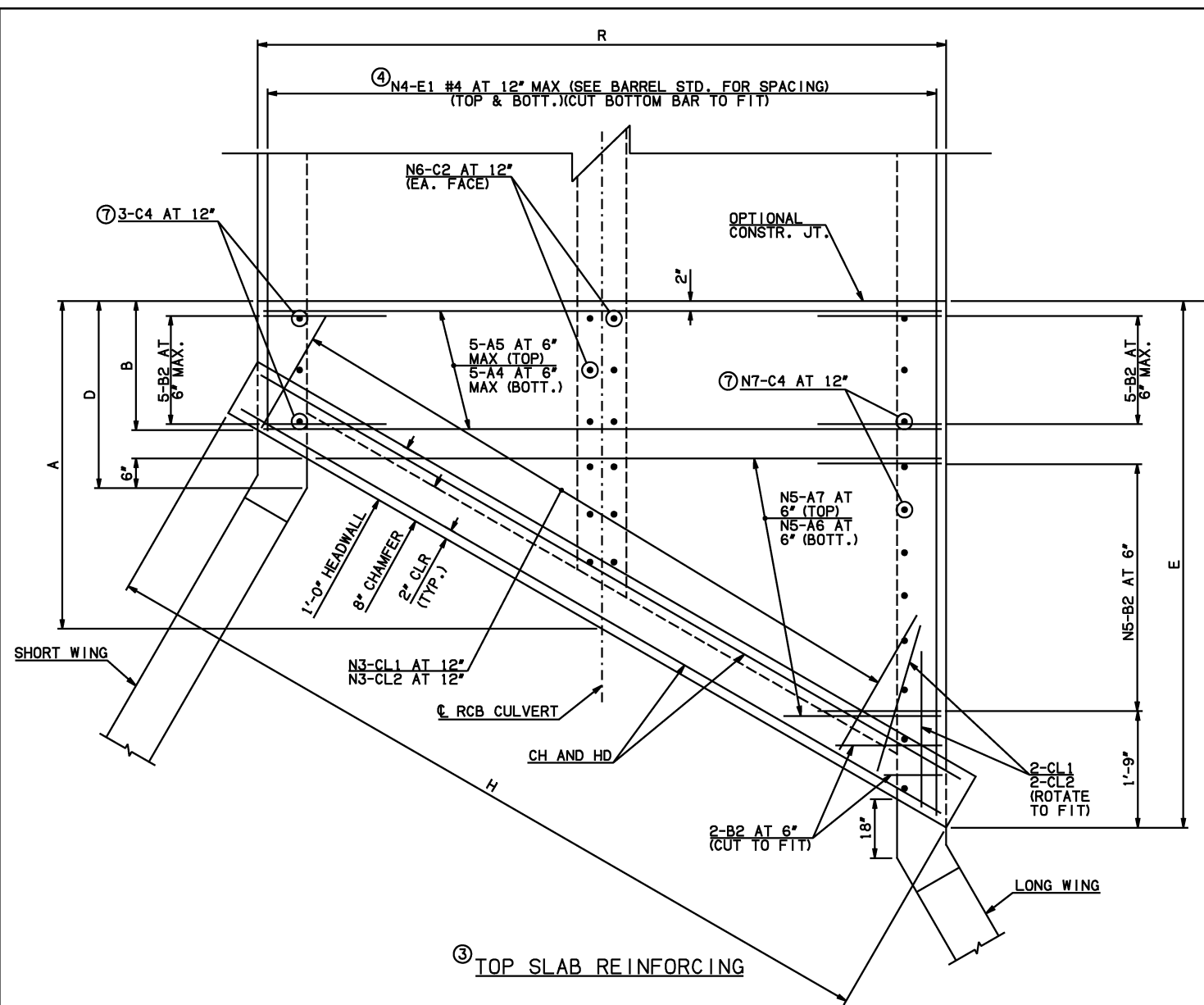
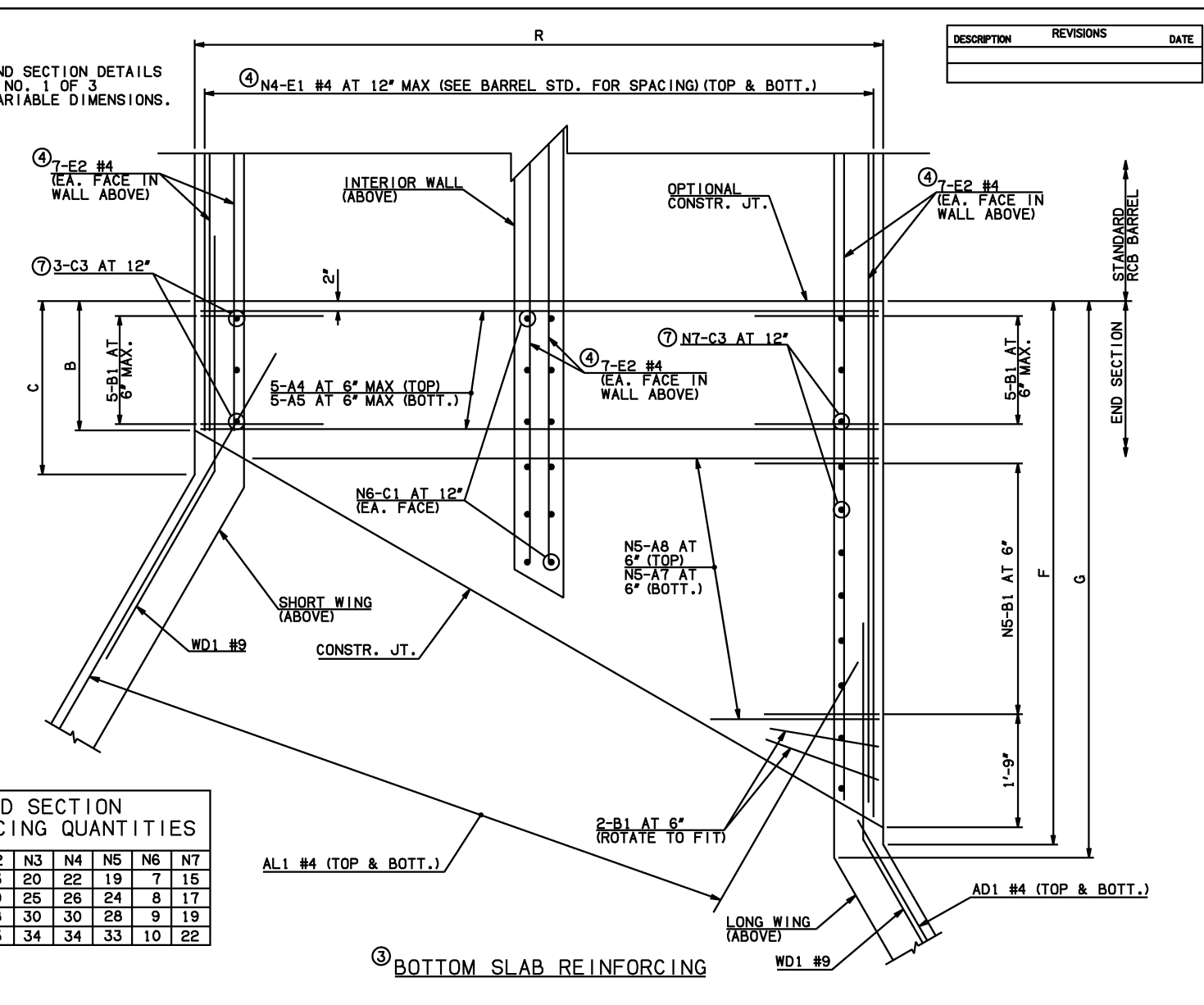


DESCRIPTION	REVISIONS	DATE



NOTE: SEE END SECTION DETAILS SHEET NO. 1 OF 3 FOR VARIABLE DIMENSIONS.



END SECTION REINFORCING QUANTITIES

SPAN	N1	N2	N3	N4	N5	N6	N7
8'	3	23	20	22	19	7	15
10'	6	20	25	26	24	8	17
12'	8	18	30	30	28	9	19
14'	11	15	34	34	33	10	22

END CONNECTION BAR LIST

MARK	FORM	ONE END CONNECTION SHOWN															
		8' SPAN				10' SPAN				12' SPAN				14' SPAN			
SIZE	QTY.	LENGTH	REMARKS	SIZE	QTY.	LENGTH	REMARKS	SIZE	QTY.	LENGTH	REMARKS	SIZE	QTY.	LENGTH	REMARKS		
A4	STR	#5	10	18'-8"	#5	10	22'-8"	#6	10	26'-8"	#7	10	30'-8"	#7	10	30'-8"	
A5	STR	#7	10	18'-8"	#8	10	22'-8"	#9	10	26'-8"	#9	10	30'-8"	#9	10	30'-8"	
A6	STR	#7	19	9'-1/2" AVG.	1'-4" TO 16'-11"	#7	24	11'-3/2" AVG.	1'-4" TO 21'-3"	#7	28	13'-0/2" AVG.	1'-4" TO 24'-9"	#7	33	15'-2/2" AVG.	1'-4" TO 29'-1"
A7	STR	#7	38	10'-3/2" AVG.	2'-6" TO 18'-1"	#8	48	12'-5/2" AVG.	2'-6" TO 22'-5"	#9	56	14'-2" AVG.	2'-6" TO 25'-10"	#9	66	16'-4" AVG.	2'-6" TO 30'-2"
A8	STR	#7	19	10'-3/2" AVG.	2'-6" TO 18'-1"	#7	24	12'-5/2" AVG.	2'-6" TO 22'-5"	#7	28	14'-2" AVG.	2'-6" TO 25'-10"	#7	33	16'-4" AVG.	2'-6" TO 30'-2"
B1	BNT	#4	31	4'-2"	#5	36	4'-9"	#5	40	4'-5"	#5	45	4'-8"	#5	45	4'-8"	
B2	BNT	#4	31	9'-10"	#5	36	10'-1"	#5	40	9'-9"	#5	45	10'-0"	#5	45	10'-0"	
C1	STR	#4	14	2'-2"	#4	16	2'-2"	#4	18	2'-3"	#4	20	2'-4"	#4	20	2'-4"	
C2	STR	#4	14	7'-10"	#4	16	7'-10"	#4	18	7'-11"	#4	20	8'-0"	#4	20	8'-0"	
C3	STR	#4	18	2'-2"	#4	20	2'-2"	#4	22	2'-3"	#4	25	2'-4"	#4	25	2'-4"	
C4	STR	#4	18	7'-10"	#4	20	7'-10"	#4	22	7'-11"	#4	25	8'-0"	#4	25	8'-0"	
E1	STR	#4	88	7'-9/2" AVG.	2'-5" TO 13'-2"	#4	104	8'-9/2" AVG.	2'-3" TO 15'-4"	#4	120	9'-9/2" AVG.	2'-1" TO 17'-6"	#4	136	10'-9" AVG.	1'-11" TO 19'-7"
E2	STR	#4	42	7'-4" AVG.	2'-5", 6'-10", 12'-9"	#4	42	8'-4" AVG.	2'-3", 7'-10", 14'-11"	#4	42	9'-4" AVG.	2'-1", 8'-10", 17'-1"	#4	42	10'-4" AVG.	1'-11", 9'-10", 19'-3"

QUANTITIES

ITEM	UNIT	8' SPAN	10' SPAN	12' SPAN	14' SPAN
CLASS AA CONCRETE	CY	71.10	80.50	92.20	105.30
REINFORCING STEEL	LB	10790.00	13460.00	16200.00	18920.00

NOTE: QUANTITIES ABOVE ARE FOR ONE END SECTION, WHICH IS COMPRISED OF ONE END CONNECTION, ONE HEADWALL, ONE APRON, AND TWO WINGWALLS.

NOTES: ② QUANTITY SHOWN REPRESENTS TWO SETS.

③ FOR FURTHER INFORMATION REGARDING END SECTION A, B, C, AND E BARS REFER TO SHORT EXTERIOR WALL, INTERIOR WALL, AND LONG EXTERIOR WALL.

④ LENGTHS OF E1 & E2 BARS SHOWN ARE ADDITIONAL LENGTHS REQUIRED FOR THE END SECTION. LAP SPLICES, AS REQUIRED, SHALL BE IN ACCORDANCE WITH RCB BARREL STANDARD NOTES.

⑤ 4-SETS OF N4-E1 BARS REQUIRED.

⑥ 3-SETS OF 14-E2 BARS REQUIRED WITH LENGTHS AS SHOWN CORRESPONDING TO SHORT EXTERIOR WALL, INTERIOR WALL, AND LONG EXTERIOR WALL.

⑦ C3 AND C4 BAR SIZE AND SPACING MAY DIFFER FROM BARREL SECTION.

APPROVED BY BRIDGE ENGINEER *Scott L. Smith* DATE 4/2/10

**OKLAHOMA DEPT. OF TRANSPORTATION**  
**BRIDGE STANDARD (ENGLISH)**  
 RCB CULVERTS - END SECTION DETAILS  
 DOUBLE CELL - 7'-0" HEIGHT - 30"  
 SHEET NO. 2 OF 3

2009 SPECIFICATIONS | RCB-E2-H7-30-2 | 01E | B-718E