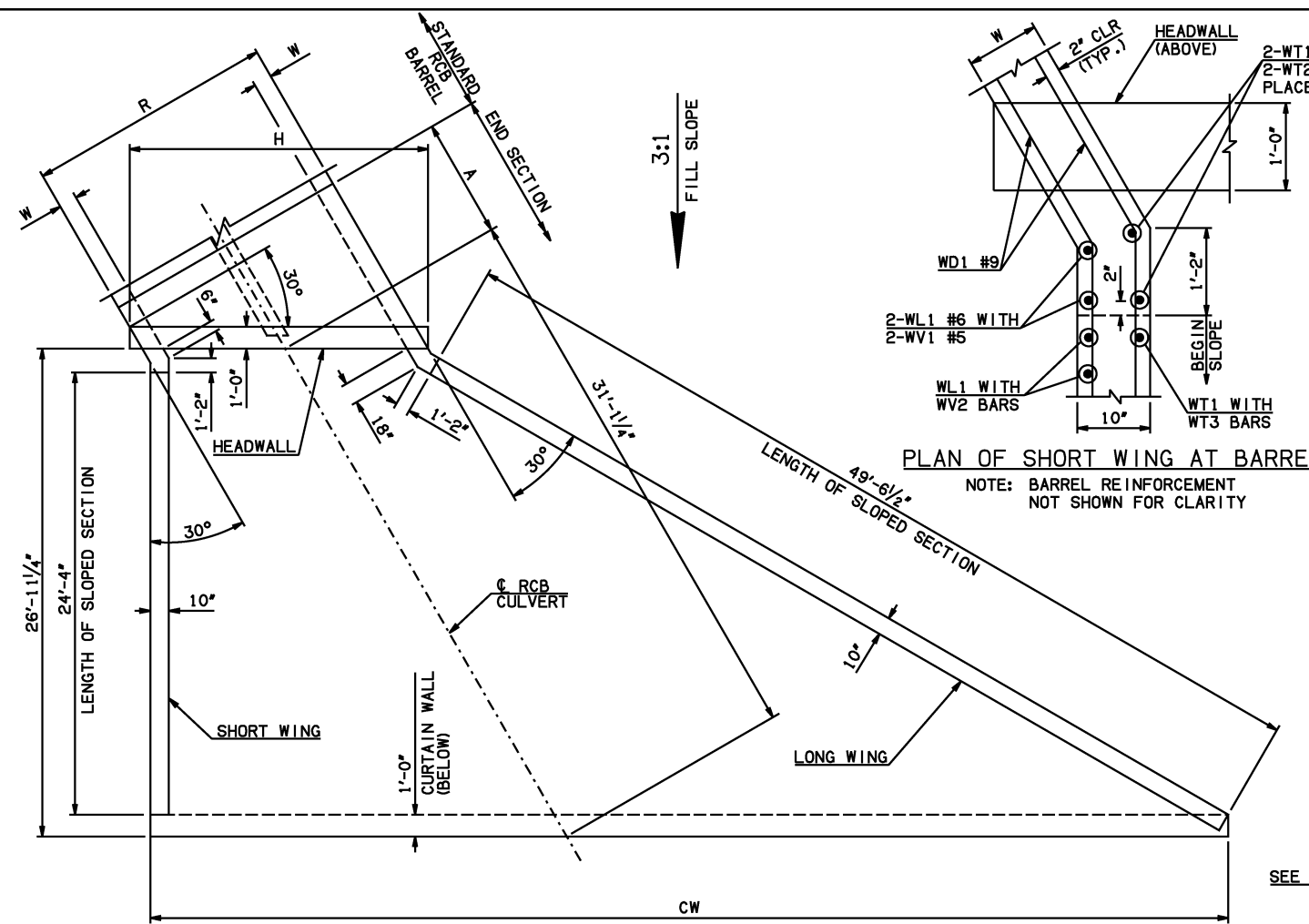


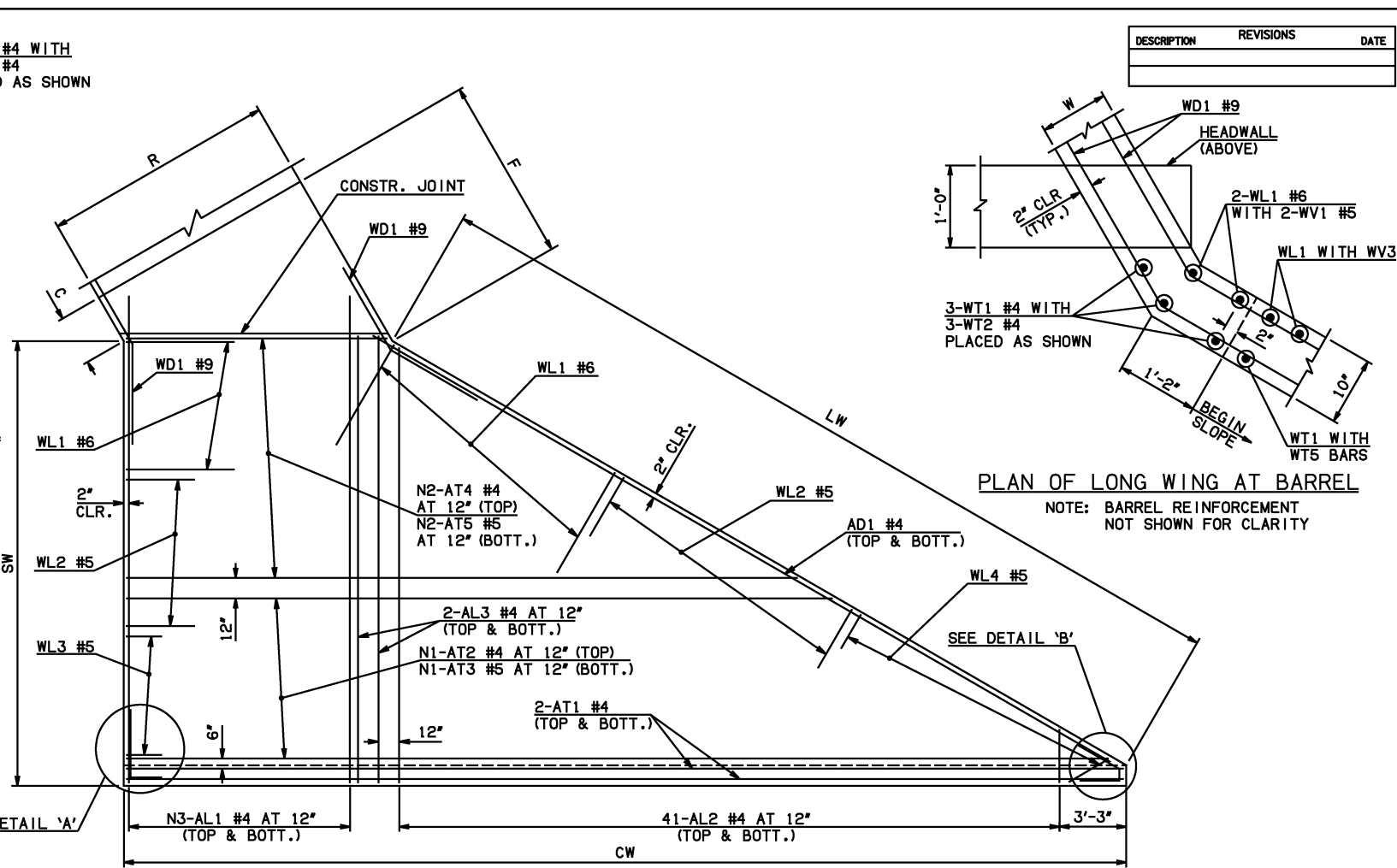
DESCRIPTION	REVISIONS	DATE



END SECTION PLAN

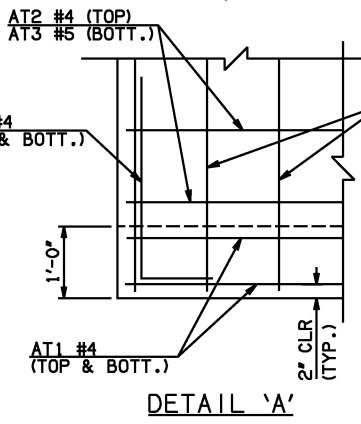
NOTE: SEE END SECTION DETAILS SHEET NO. 2 OF 3 FOR VARIABLE REINFORCING QUANTITIES.

SPAN	W	A	B	C	CW	D	E	F	G	H	LW	R	SW
8'	12"	8'-0"	2'-6 <sup>1</sup> / <sub>4</sub> "	3'-8"	65'-3 <sup>1</sup> / <sub>2</sub> "	3'-7"	13'-5 <sup>3</sup> / <sub>4</sub> "	14'-5 <sup>3</sup> / <sub>4</sub> "	14'-5"	22'-6 <sup>1</sup> / <sub>4</sub> "	50'-1 <sup>3</sup> / <sub>4</sub> "	19'-0"	25'-11 <sup>1</sup> / <sub>4</sub> "
10'	12"	9'-0"	2'-4 <sup>1</sup> / <sub>4</sub> "	3'-6"	69'-11"	3'-5 <sup>1</sup> / <sub>4</sub> "	15'-7 <sup>3</sup> / <sub>4</sub> "	16'-7 <sup>1</sup> / <sub>2</sub> "	16'-6 <sup>3</sup> / <sub>4</sub> "	27'-1 <sup>3</sup> / <sub>4</sub> "	50'-1 <sup>3</sup> / <sub>4</sub> "	23'-0"	25'-11 <sup>1</sup> / <sub>4</sub> "
12'	12"	10'-0"	2'-2 <sup>1</sup> / <sub>2</sub> "	3'-4 <sup>1</sup> / <sub>4</sub> "	74'-6 <sup>1</sup> / <sub>2</sub> "	3'-3 <sup>1</sup> / <sub>2</sub> "	17'-9 <sup>1</sup> / <sub>2</sub> "	18'-9 <sup>1</sup> / <sub>2</sub> "	18'-8 <sup>1</sup> / <sub>2</sub> "	31'-9"	50'-1 <sup>3</sup> / <sub>4</sub> "	27'-0"	25'-11 <sup>1</sup> / <sub>4</sub> "
14'	12"	11'-0"	2'-0 <sup>1</sup> / <sub>2</sub> "	3'-2 <sup>1</sup> / <sub>4</sub> "	79'-1 <sup>3</sup> / <sub>4</sub> "	3'-1 <sup>1</sup> / <sub>2</sub> "	19'-11 <sup>1</sup> / <sub>2</sub> "	20'-11 <sup>1</sup> / <sub>4</sub> "	20'-10 <sup>1</sup> / <sub>2</sub> "	36'-4 <sup>1</sup> / <sub>2</sub> "	50'-1 <sup>3</sup> / <sub>4</sub> "	31'-0"	25'-11 <sup>1</sup> / <sub>4</sub> "



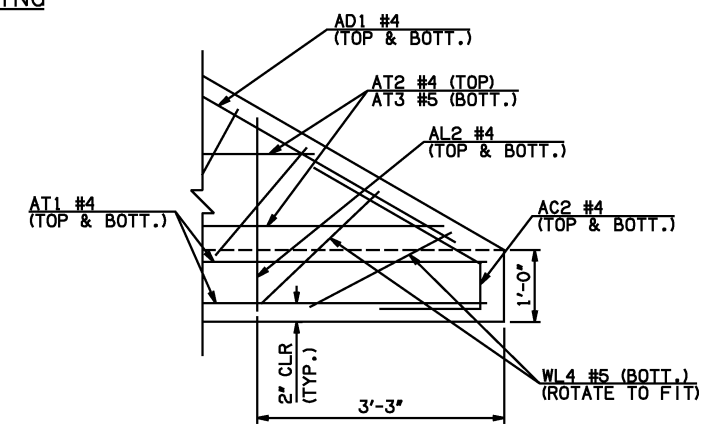
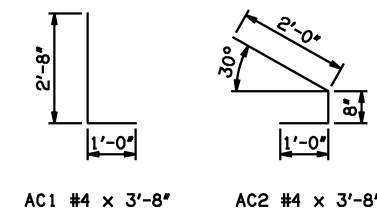
PLAN OF LONG WING AT BARREL

NOTE: BARREL REINFORCEMENT NOT SHOWN FOR CLARITY



DETAIL 'A'

APRON REINFORCING



DETAIL 'B'

- ① INCLUDES 2'-6" LAP.
- ② QUANTITY SHOWN REPRESENTS TWO SETS.

MARK	SIZE	FORM	ONE APRON SHOWN										
			8' SPAN		10' SPAN		12' SPAN		14' SPAN				
QTY.	LENGTH	REMARKS	QTY.	LENGTH	REMARKS	QTY.	LENGTH	REMARKS	QTY.	LENGTH	REMARKS		
AC1	#4	BNT	2	3'-8"		2	3'-8"		2	3'-8"		2	3'-8"
AC2	#4	BNT	2	3'-8"		2	3'-8"		2	3'-8"		2	3'-8"
① AD1	#4	STR	2	51'-6"		2	51'-6"		2	51'-6"		2	51'-6"
② AL1	#4	STR	40	28'-9"		50	28'-9"		60	28'-9"		68	28'-9"
AL2	#4	STR	82	14'-0 <sup>1</sup> / <sub>2</sub> " AVG.	2'-6" TO 25'-7"	82	14'-0 <sup>1</sup> / <sub>2</sub> " AVG.	2'-6" TO 25'-7"	82	14'-0 <sup>1</sup> / <sub>2</sub> " AVG.	2'-6" TO 25'-7"	82	14'-0 <sup>1</sup> / <sub>2</sub> " AVG.
AL3	#4	STR	4	26'-9"		4	26'-9"		4	26'-9"		4	26'-9"
① AT1	#4	STR	4	67'-5"		4	72'-0"		4	76'-8"		4	81'-3"
① AT2	#4	STR	3	64'-11 <sup>1</sup> / <sub>2</sub> " AVG.	63'-3" TO 66'-8"	6	67'-0" AVG.	62'-8" TO 71'-4"	8	69'-10" AVG.	63'-9" TO 75'-11"	11	71'-10 <sup>1</sup> / <sub>2</sub> " AVG.
① AT3	#5	STR	3	64'-11 <sup>1</sup> / <sub>2</sub> " AVG.	63'-3" TO 66'-8"	6	67'-0" AVG.	62'-8" TO 71'-4"	8	69'-10" AVG.	63'-9" TO 75'-11"	11	71'-10 <sup>1</sup> / <sub>2</sub> " AVG.
AT4	#4	STR	23	39'-11 <sup>1</sup> / <sub>2</sub> " AVG.	20'-11" TO 59'-0"	20	41'-11 <sup>1</sup> / <sub>2</sub> " AVG.	25'-6" TO 58'-5"	18	44'-10" AVG.	30'-1" TO 59'-7"	15	46'-10 <sup>1</sup> / <sub>2</sub> " AVG.
AT5	#5	STR	23	39'-11 <sup>1</sup> / <sub>2</sub> " AVG.	20'-11" TO 59'-0"	20	41'-11 <sup>1</sup> / <sub>2</sub> " AVG.	25'-6" TO 58'-5"	18	44'-10" AVG.	30'-1" TO 59'-7"	15	46'-10 <sup>1</sup> / <sub>2</sub> " AVG.

APPROVED BY BRIDGE ENGINEER *Scott L. Smith* DATE 4/2/10

**OKLAHOMA DEPT. OF TRANSPORTATION**  
**BRIDGE STANDARD (ENGLISH)**  
 RCB CULVERTS - END SECTION DETAILS  
 DOUBLE CELL - 7'-0" HEIGHT - 30°  
 SHEET NO. 1 OF 3

2009 SPECIFICATIONS | RCB-E2-H7-30-1 | 01E | B-717E