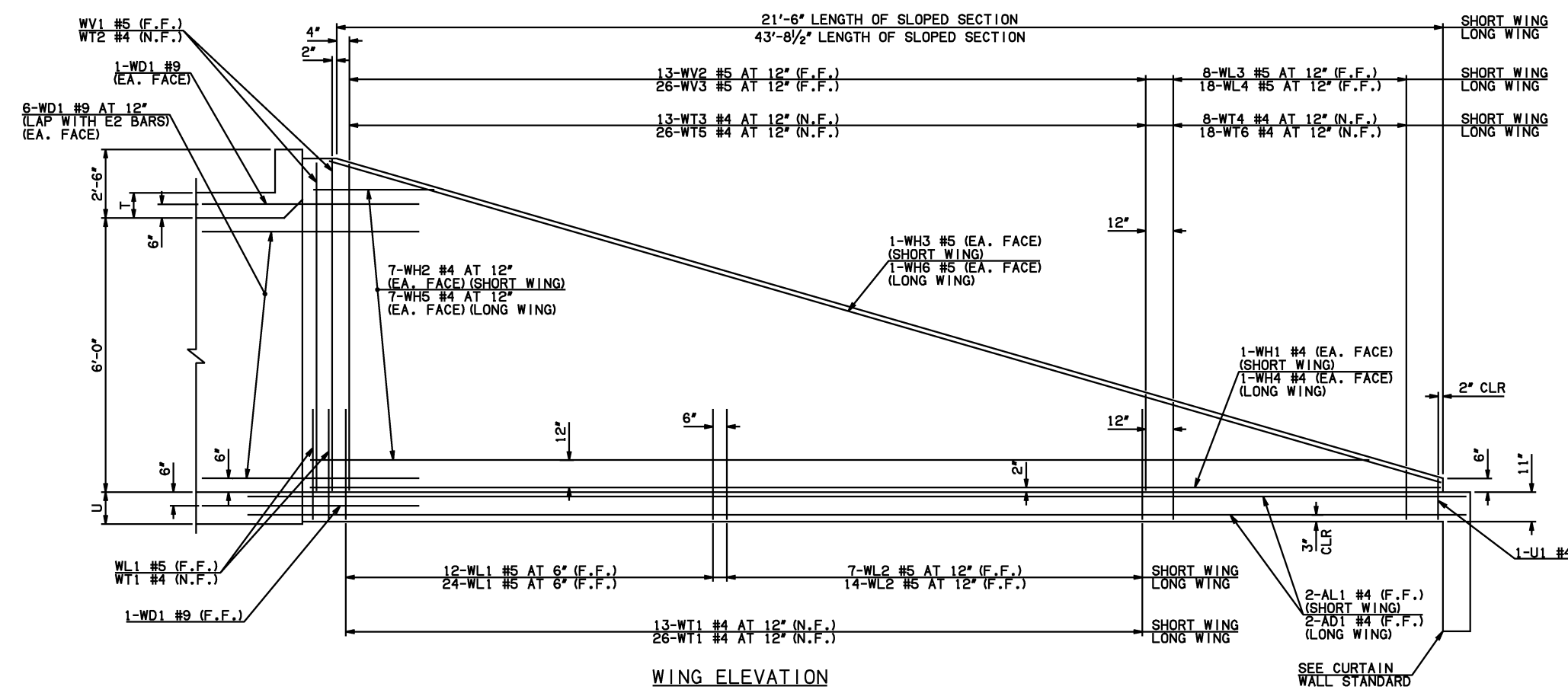
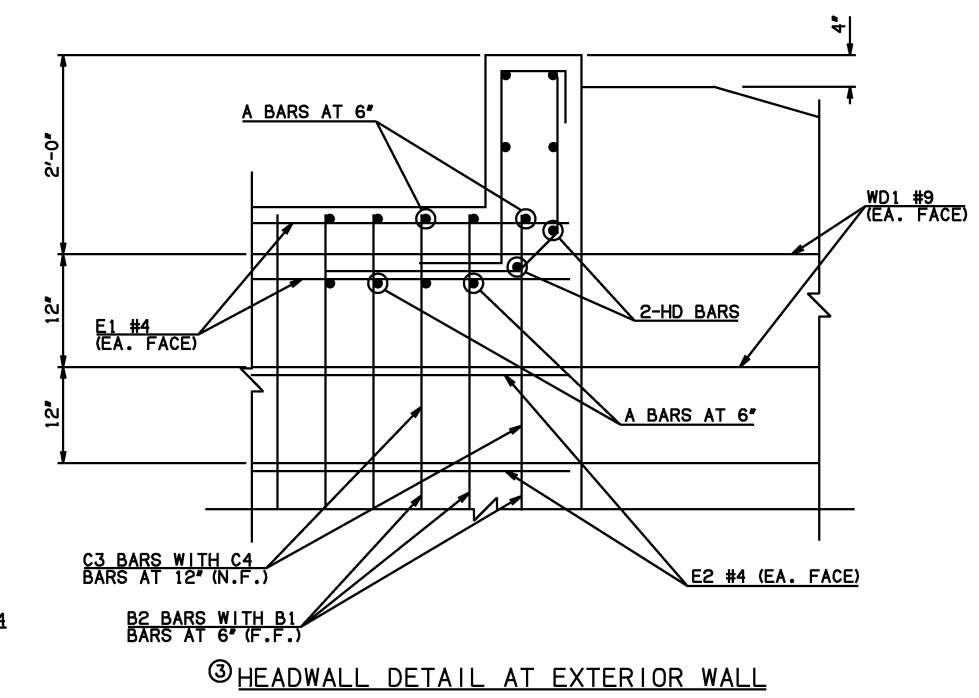


DESCRIPTION	REVISIONS	DATE

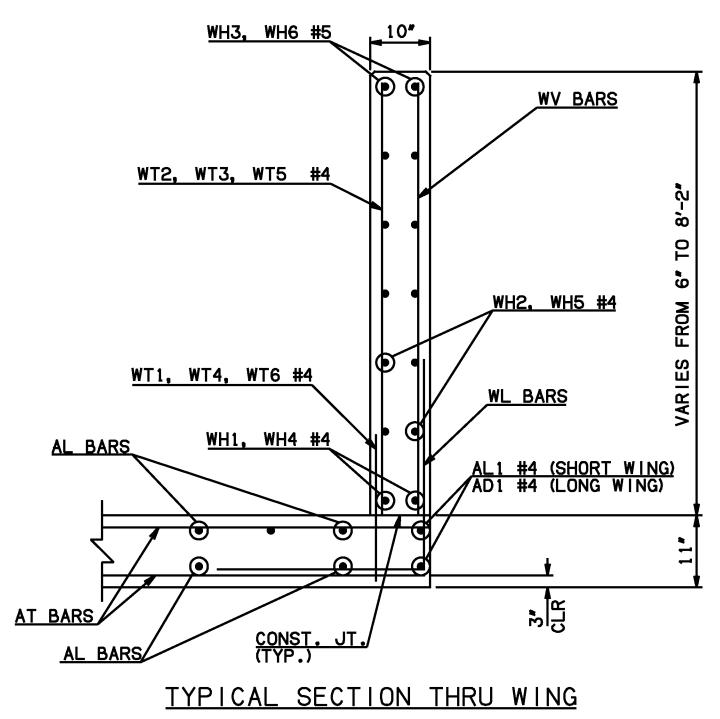


NOTE: F.F. = FAR FACE  
N.F. = NEAR FACE

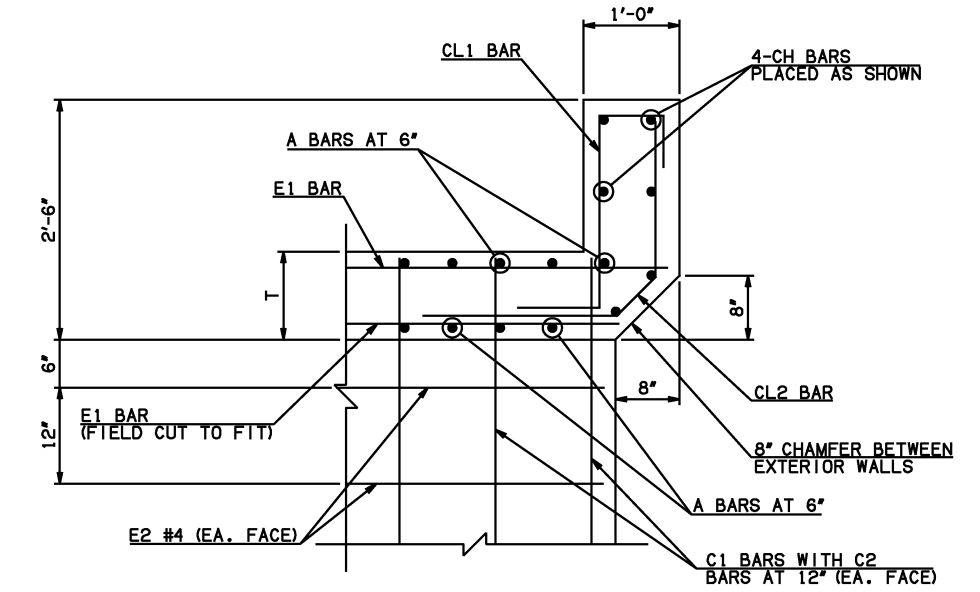
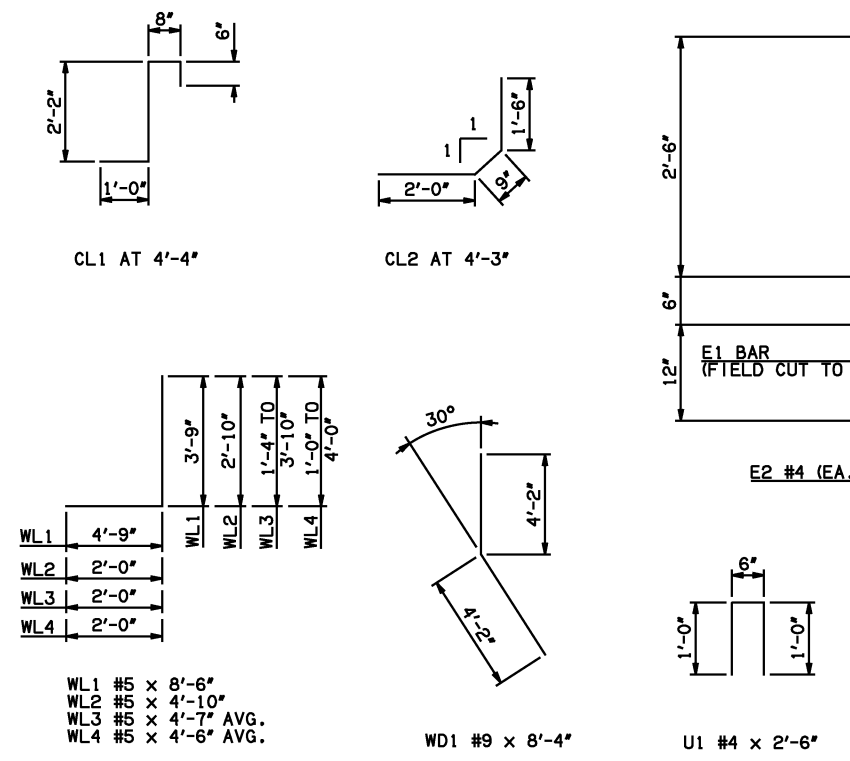
WING ELEVATION



HEADWALL DETAIL AT EXTERIOR WALL



TYPICAL SECTION THRU WING



HEADWALL DETAIL AT INTERIOR WALL  
DIMENSION SHOWN NORMAL TO HEADWALL

NOTES:  
② QUANTITY SHOWN REPRESENTS TWO SETS.  
③ FOR FURTHER INFORMATION REGARDING END SECTION BARS A, B, C, E1, AND E2, REFER TO RCB CULVERT - BARREL DETAILS.

WINGWALL BAR LIST (LONG AND SHORT WING INCLUDED)					
MARK	SIZE	QTY.	FORM	LENGTH	REMARKS
WD1	#9	30	BNT	8'-4"	
WH1	#4	2	STR	22'-4"	
WH2	#4	14	STR	11'-8" AVG.	3'-3" TO 20'-1"
WH3	#5	2	STR	22'-7"	
WH4	#4	2	STR	44'-6"	
WH5	#4	14	STR	22'-9 1/2" AVG.	5'-8" TO 39'-11"
WH6	#5	2	STR	44'-2"	
WL1	#5	40	BNT	8'-6"	
WL2	#5	21	BNT	4'-10"	
WL3	#5	8	BNT	4'-7" AVG.	3'-4" TO 5'-10"
WL4	#5	18	BNT	4'-6" AVG.	3'-0" TO 6'-0"
WT1	#4	44	STR	2'-10"	
WT2	#4	5	STR	8'-0"	
WT3	#4	13	STR	5'-8 1/2" AVG.	3'-7" TO 7'-10"
WT4	#4	8	STR	2'-7" AVG.	1'-4" TO 3'-10"
WT5	#4	26	STR	5'-8 1/2" AVG.	3'-6" TO 7'-11"
WT6	#4	18	STR	2'-6" AVG.	1'-0" TO 4'-0"
WV1	#5	4	STR	8'-0"	
WV2	#5	13	STR	5'-8 1/2" AVG.	3'-7" TO 7'-10"
WV3	#5	26	STR	5'-8 1/2" AVG.	3'-6" TO 7'-11"
U1	#4	2	BNT	2'-6"	

HEADWALL BAR LIST													
ONE HEADWALL SHOWN													
MARK	FORM	6' SPAN			8' SPAN			10' SPAN			12' SPAN		
		SIZE	QTY.	LENGTH	SIZE	QTY.	LENGTH	SIZE	QTY.	LENGTH	SIZE	QTY.	LENGTH
CH	STR	#4	4	17'-6"	#4	4	22'-2"	#6	4	26'-9"	#6	4	31'-5"
CL1	BNT	#4	18	4'-4"	#4	22	4'-4"	#5	27	4'-4"	#5	32	4'-4"
CL2	BNT	#4	18	4'-3"	#4	22	4'-3"	#5	27	4'-3"	#5	32	4'-3"
HD	STR	#6	2	17'-6"	#6	2	22'-2"	#8	2	26'-9"	#8	2	31'-5"

APPROVED BY BRIDGE ENGINEER *Scott J. Smith* DATE 4/2/10

**OKLAHOMA DEPT. OF TRANSPORTATION**  
**BRIDGE STANDARD (ENGLISH)**  
 RCB CULVERTS - END SECTION DETAILS  
 DOUBLE CELL - 6'-0" HEIGHT - 30°  
 SHEET NO. 3 OF 3

2009 SPECIFICATIONS RCB-E2-H6-30-3 01E B-716E