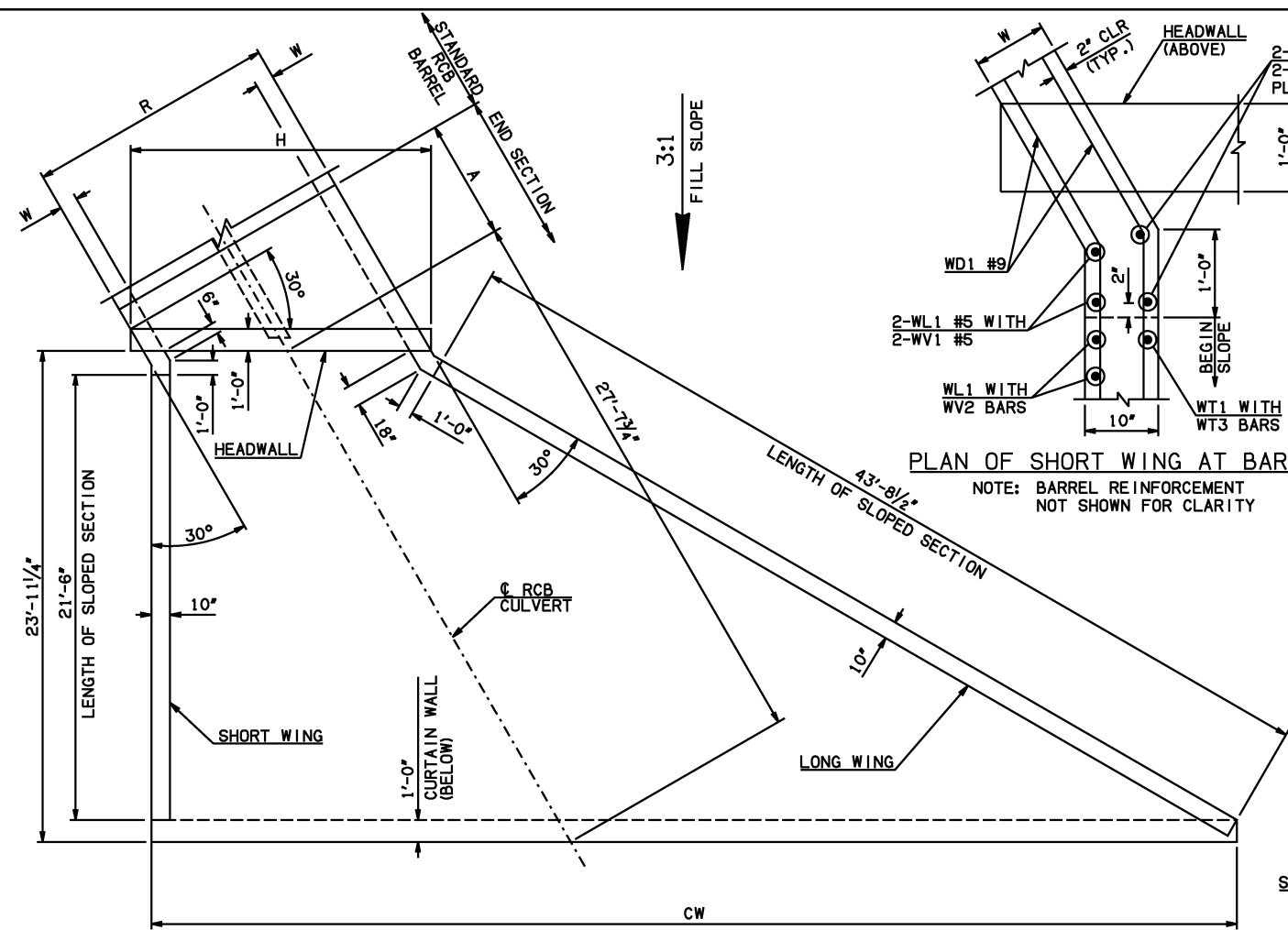


DESCRIPTION	REVISIONS	DATE

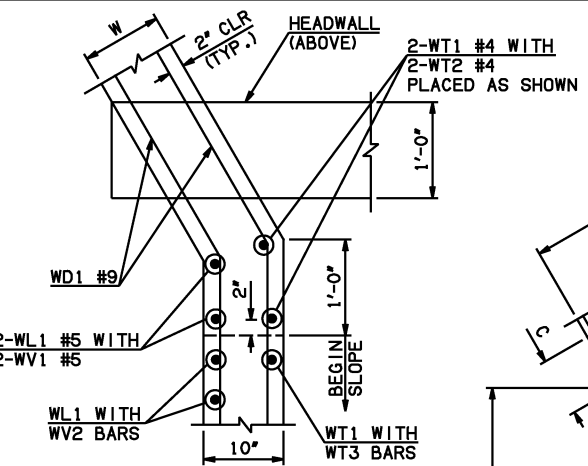


END SECTION PLAN

NOTE: SEE END SECTION DETAILS SHEET NO. 2 OF 3 FOR VARIABLE REINFORCING QUANTITIES.

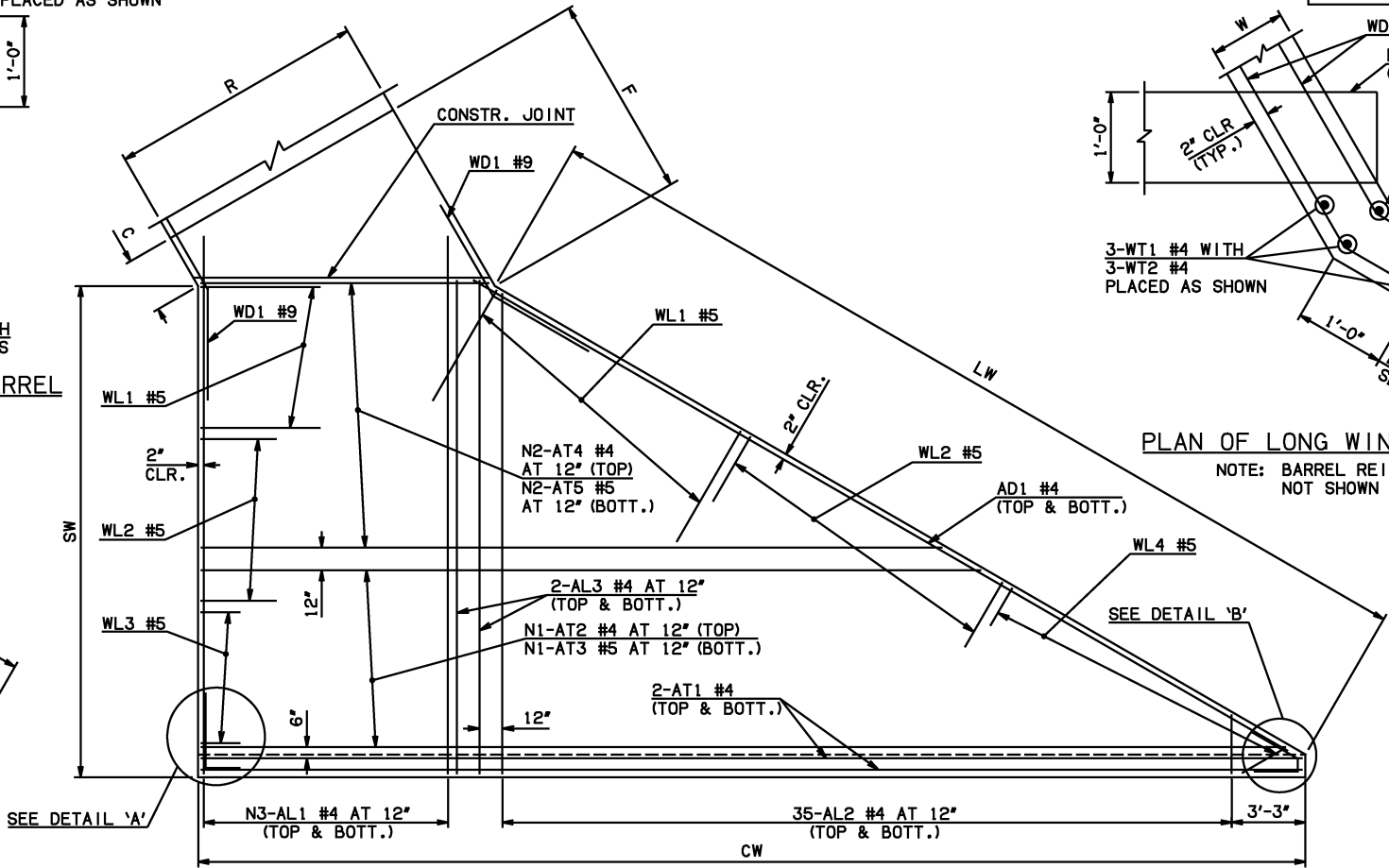
END SECTION VARIABLE DIMENSIONS

SPAN	W	A	B	C	CW	D	E	F	G	H	LW	R	SW
6'	12"	7'-0"	2'-8"	3'-9 3/4"	55'-5 3/4"	3'-9"	11'-4"	12'-3 3/4"	12'-3"	17'-10 3/4"	44'-1 3/4"	15'-0"	22'-11 1/4"
8'	12"	8'-0"	2'-6 1/4"	3'-8"	60'-1 1/4"	3'-7"	13'-5 3/4"	14'-5 3/4"	14'-5"	22'-6 1/4"	44'-1 3/4"	19'-0"	22'-11 1/4"
10'	12"	9'-0"	2'-4 1/4"	3'-6"	64'-8 3/4"	3'-5 1/4"	15'-7 3/4"	16'-7 1/2"	16'-6 3/4"	27'-1 3/4"	44'-1 3/4"	23'-0"	22'-11 1/4"
12'	12"	10'-0"	2'-2 1/2"	3'-4 1/4"	69'-4"	3'-3 1/2"	17'-9 1/2"	18'-9 1/2"	18'-8 1/2"	31'-9"	44'-1 3/4"	27'-0"	22'-11 1/4"



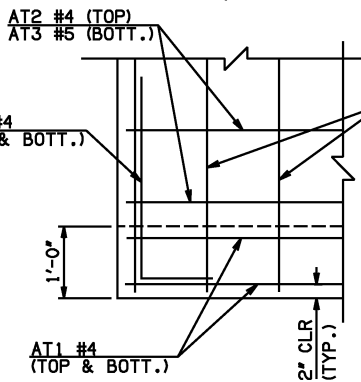
PLAN OF SHORT WING AT BARREL

NOTE: BARREL REINFORCEMENT NOT SHOWN FOR CLARITY



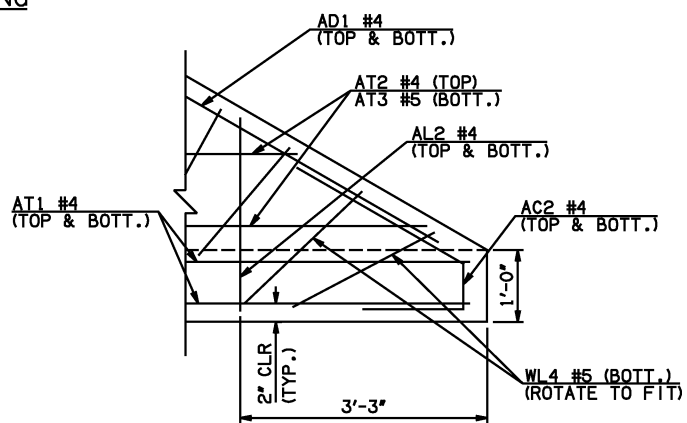
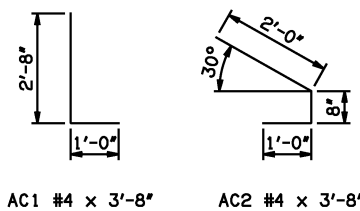
PLAN OF LONG WING AT BARREL

NOTE: BARREL REINFORCEMENT NOT SHOWN FOR CLARITY



DETAIL 'A'

APRON REINFORCING



DETAIL 'B'

- ① INCLUDES 2'-6" LAP.
- ② QUANTITY SHOWN REPRESENTS TWO SETS.

APRON BAR LIST

MARK	SIZE	FORM	ONE APRON SHOWN											
			6' SPAN			8' SPAN			10' SPAN			12' SPAN		
QTY.	LENGTH	REMARKS	QTY.	LENGTH	REMARKS	QTY.	LENGTH	REMARKS	QTY.	LENGTH	REMARKS	QTY.	LENGTH	REMARKS
AC1	#4	BNT	2	3'-8"		2	3'-8"		2	3'-8"		2	3'-8"	
AC2	#4	BNT	2	3'-8"		2	3'-8"		2	3'-8"		2	3'-8"	
AD1	#4	STR	2	45'-6"		2	45'-6"		2	45'-6"		2	45'-6"	
AL1	#4	STR	32	25'-9"		40	25'-9"		50	25'-9"		60	25'-9"	
AL2	#4	STR	70	12'-3 1/2" AVG.	2'-6" TO 22'-1"	70	12'-3 1/2" AVG.	2'-6" TO 22'-1"	70	12'-3 1/2" AVG.	2'-6" TO 22'-1"	70	12'-3 1/2" AVG.	2'-6" TO 22'-1"
AL3	#4	STR	4	23'-9"		4	23'-9"		4	23'-9"		4	23'-9"	
AT1	#4	STR	4	55'-1"		4	59'-9"		4	66'-10"	①	4	71'-6"	①
AT2	#4	STR	23	35'-3 1/2" AVG.	16'-3" TO 54'-4"	23	39'-11 1/2" AVG.	20'-11" TO 59'-0"	3	64'-4 1/2" AVG.	①	5	67'-3" AVG.	①
AT3	#5	STR	23	35'-3 1/2" AVG.	16'-3" TO 54'-4"	23	39'-11 1/2" AVG.	20'-11" TO 59'-0"	3	64'-4 1/2" AVG.	①	5	67'-3" AVG.	①
AT4	#4	STR	0			20	41'-11 1/2" AVG.	25'-6" TO 58'-5"	18	44'-10" AVG.		30	30'-1" TO 59'-7"	
AT5	#5	STR	0			0			20	41'-11 1/2" AVG.		18	44'-10" AVG.	

APPROVED BY BRIDGE ENGINEER *Scott J. Smith* DATE 4/2/10

**OKLAHOMA DEPT. OF TRANSPORTATION**  
**BRIDGE STANDARD (ENGLISH)**  
 RCB CULVERTS - END SECTION DETAILS  
 DOUBLE CELL - 6'-0" HEIGHT - 30°  
 SHEET NO. 1 OF 3

2009 SPECIFICATIONS | RCB-E2-H6-30-1 | 01E | B-714E