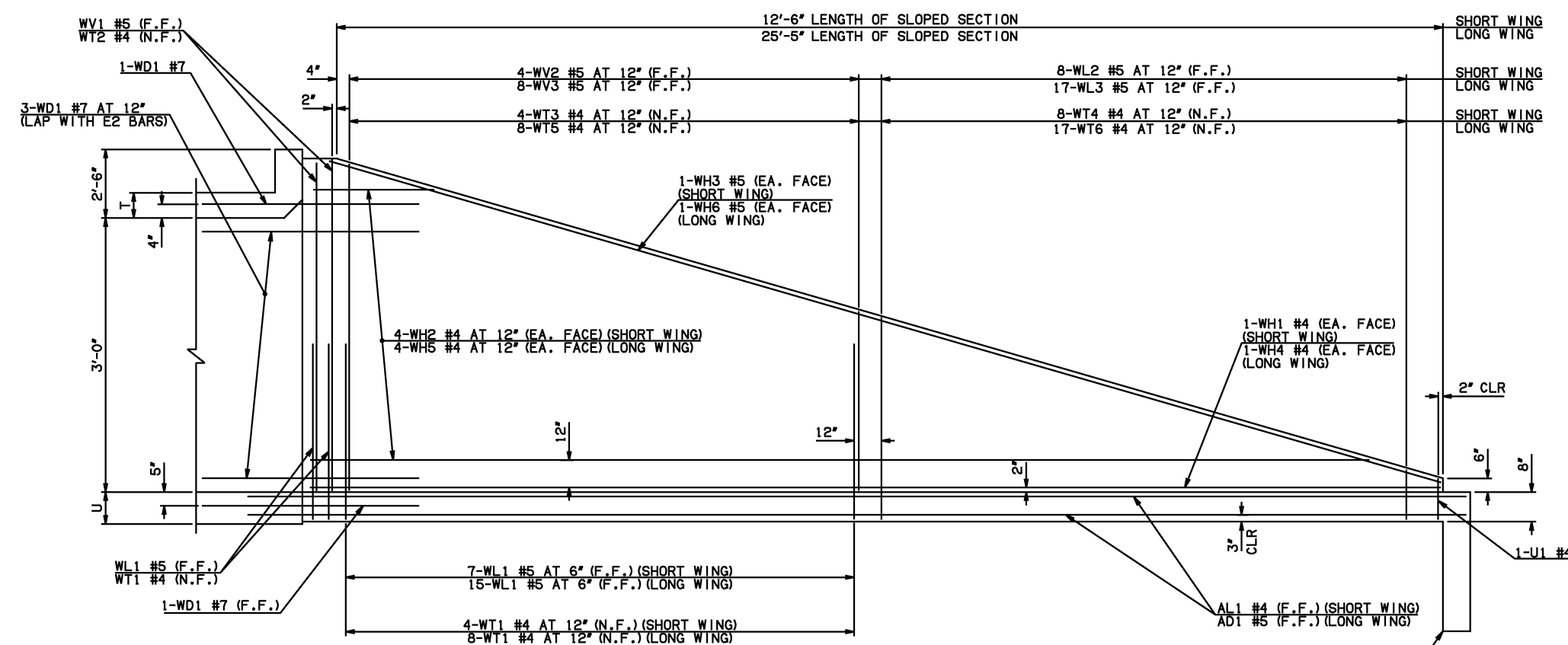
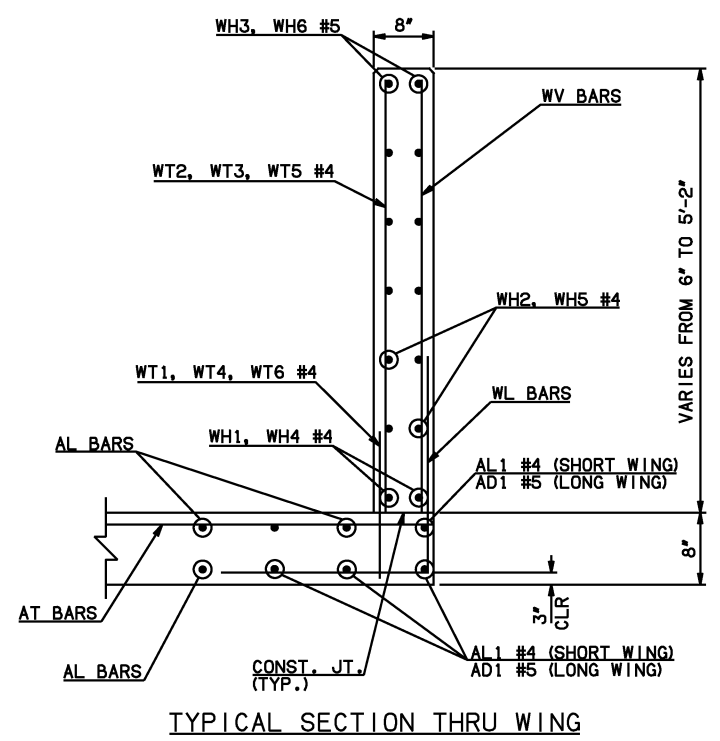


DESCRIPTION	REVISIONS	DATE



NOTE: F.F. = FAR FACE
N.F. = NEAR FACE

WING ELEVATION

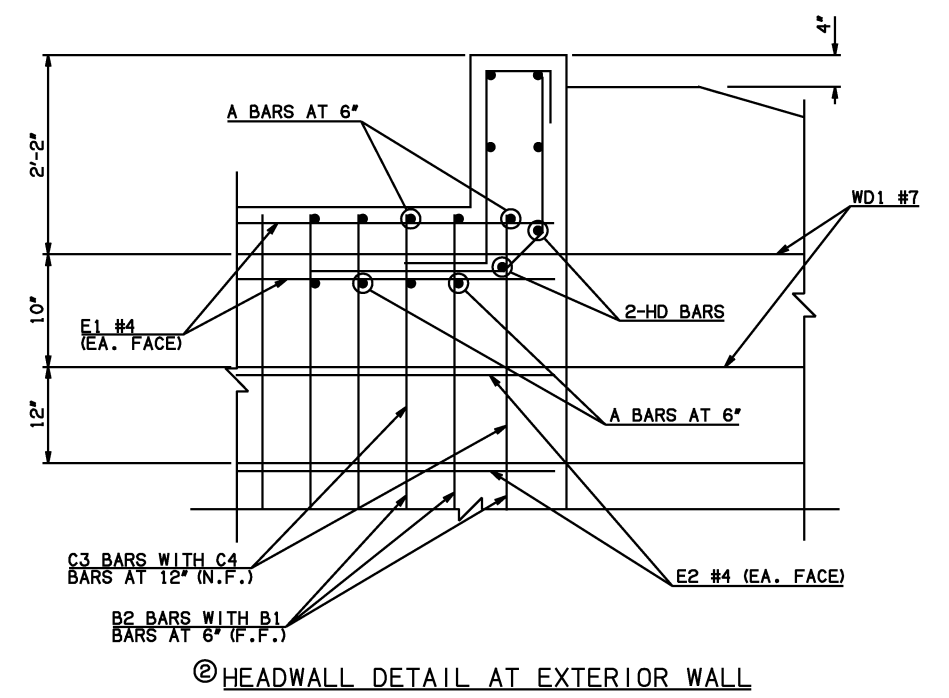


TYPICAL SECTION THRU WING

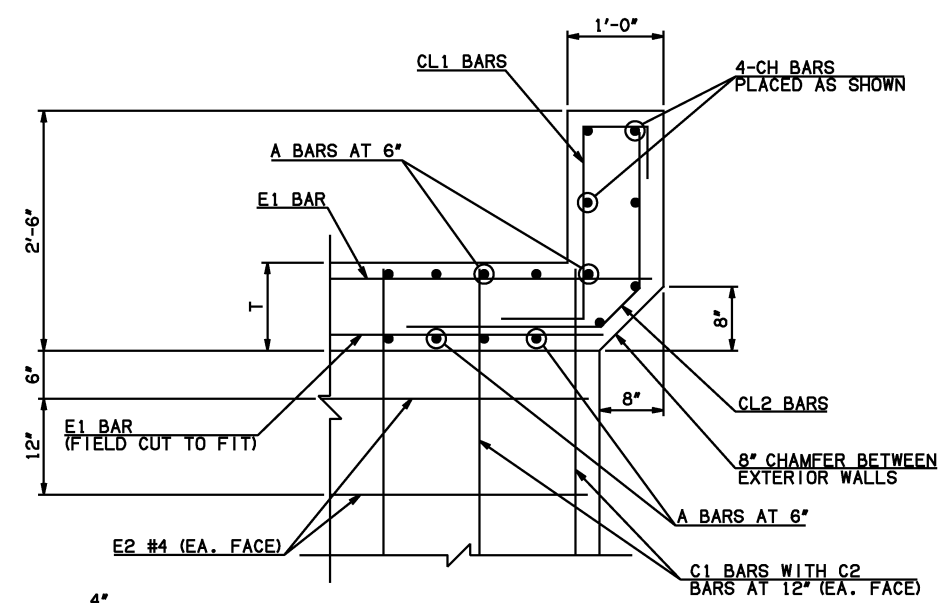
WINGWALL BAR LIST (LONG AND SHORT WING INCLUDED)				
MARK	SIZE	QTY.	FORM	REMARKS
WD1	#7	10	BNT	8'-4"
WH1	#4	2	STR	13'-4"
WH2	#4	8	STR	7'-2" AVG. 3'-2" TO 11'-2"
WH3	#5	2	STR	13'-1"
WH4	#4	2	STR	26'-3"
WH5	#4	8	STR	13'-7 1/2" AVG. 5'-5" TO 21'-10"
WH6	#5	2	STR	25'-8"
WL1	#5	26	BNT	6'-1"
WL2	#5	8	BNT	4'-5 1/2" AVG. 3'-2" TO 5'-9"
WL3	#5	17	BNT	4'-4 1/2" AVG. 2'-11" TO 5'-10"
WT1	#4	17	STR	2'-10"
WT2	#4	5	STR	5'-0"
WT3	#4	4	STR	4'-3" AVG. 3'-8" TO 4'-10"
WT4	#4	8	STR	2'-5 1/2" AVG. 1'-2" TO 3'-9"
WT5	#4	8	STR	4'-3" AVG. 3'-7" TO 4'-11"
WT6	#4	17	STR	2'-4 1/2" AVG. 11" TO 3'-10"
WV1	#5	4	STR	5'-0"
WV2	#5	4	STR	4'-3" AVG. 3'-8" TO 4'-10"
WV3	#5	8	STR	4'-3" AVG. 3'-7" TO 4'-11"
U1	#4	2	BNT	1'-10"

HEADWALL BAR LIST

ONE HEADWALL SHOWN																
MARK	FORM	4' SPAN			5' SPAN			6' SPAN			8' SPAN		10' SPAN			
		SIZE	QTY.	LENGTH	SIZE	QTY.	LENGTH	SIZE	QTY.	LENGTH	SIZE	QTY.	LENGTH	SIZE	QTY.	LENGTH
CH	STR	#4	4	12'-4"	#4	4	14'-8"	#4	4	16'-11"	#4	4	21'-7"	#6	4	26'-2"
CL1	BNT	#4	13	4'-4"	#4	15	4'-4"	#4	17	4'-4"	#4	22	4'-4"	#5	26	4'-4"
CL2	BNT	#4	13	4'-3"	#4	15	4'-3"	#4	17	4'-3"	#4	22	4'-3"	#5	26	4'-3"
HD	STR	#6	2	12'-4"	#6	2	14'-8"	#6	2	16'-11"	#6	2	21'-7"	#8	2	26'-2"

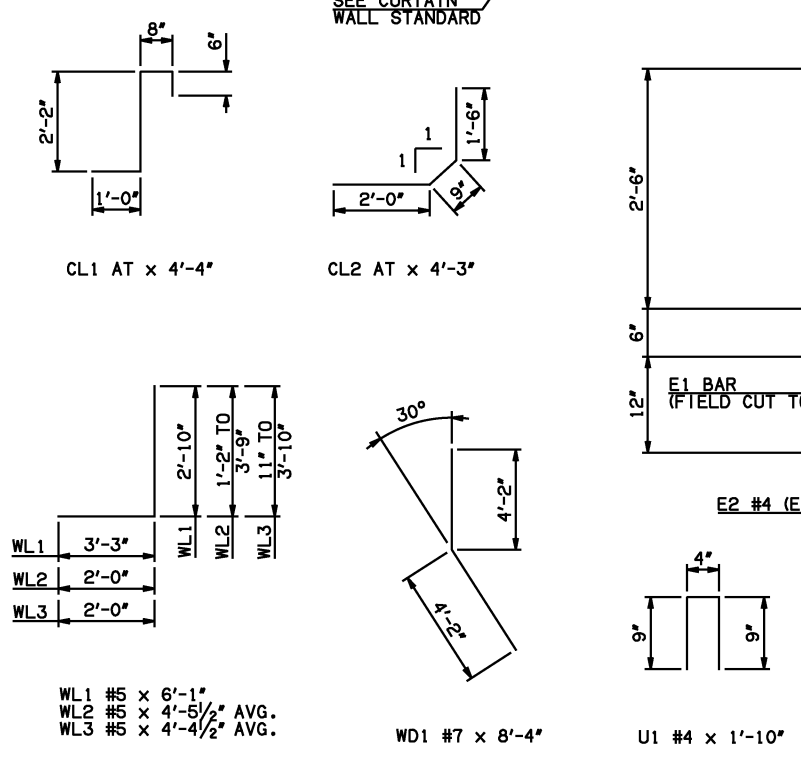


HEADWALL DETAIL AT EXTERIOR WALL



HEADWALL DETAIL AT INTERIOR WALL
DIMENSION SHOWN NORMAL TO HEADWALL

- NOTES:
- QUANTITY SHOWN REPRESENTS TWO SETS.
 - FOR FURTHER INFORMATION REGARDING END SECTION A, B, C, AND E BARS REFER TO RCB CULVERT - BARREL DETAILS.



APPROVED BY BRIDGE ENGINEER *Scott J. Smith* DATE 4/2/10

OKLAHOMA DEPT. OF TRANSPORTATION
BRIDGE STANDARD (ENGLISH)
RCB CULVERTS - END SECTION DETAILS
DOUBLE CELL - 3'-0" HEIGHT - 30°
SHEET NO. 3 OF 3

2009 SPECIFICATIONS RCB-E2-H3-30-3 01E B-707E