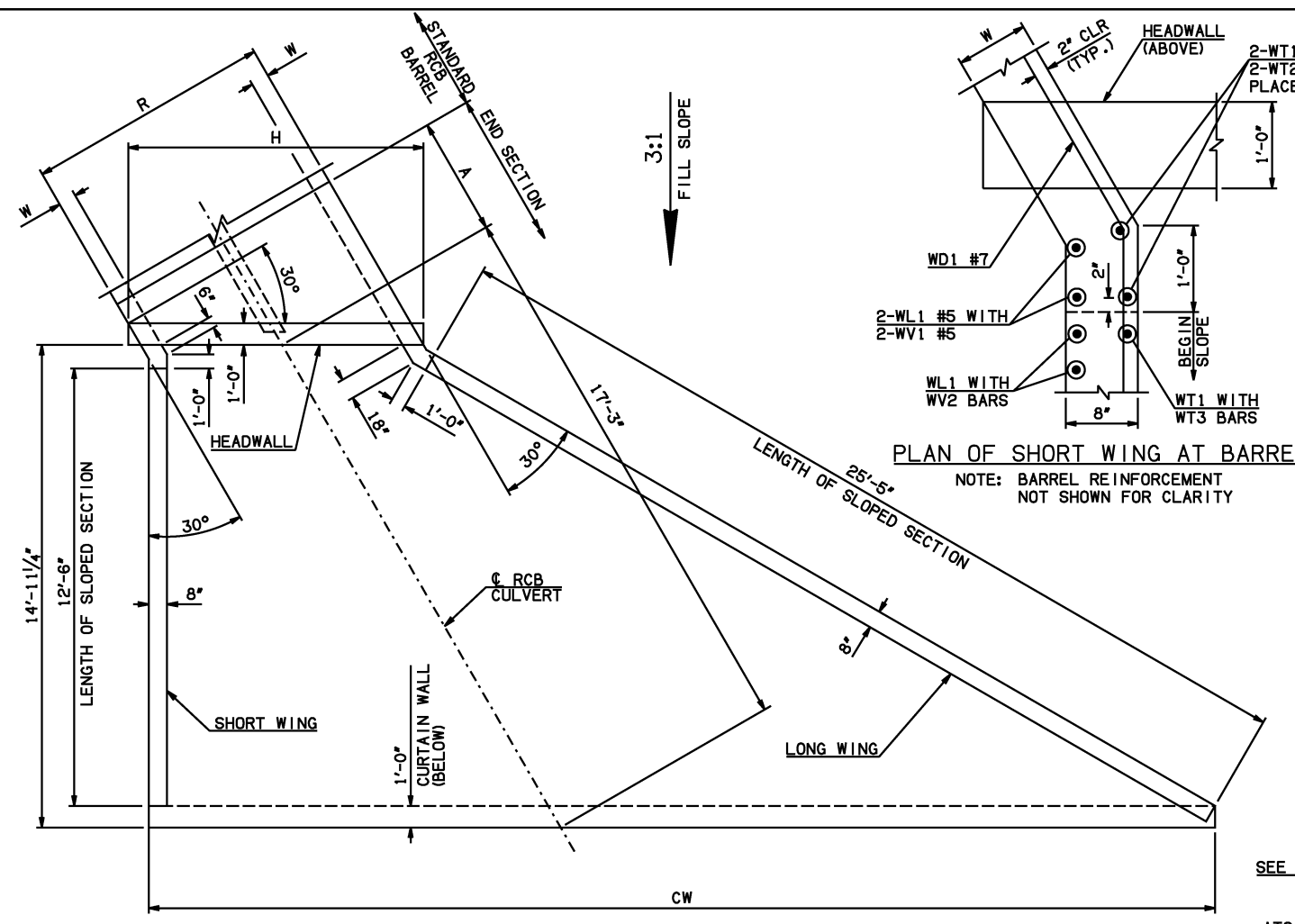


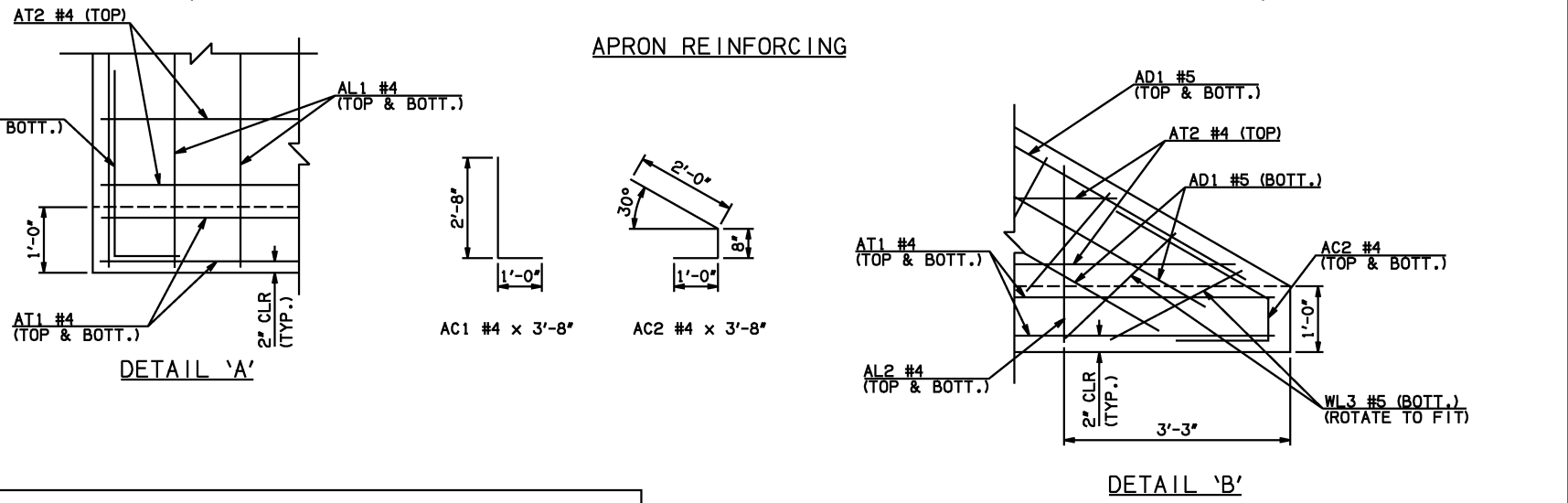
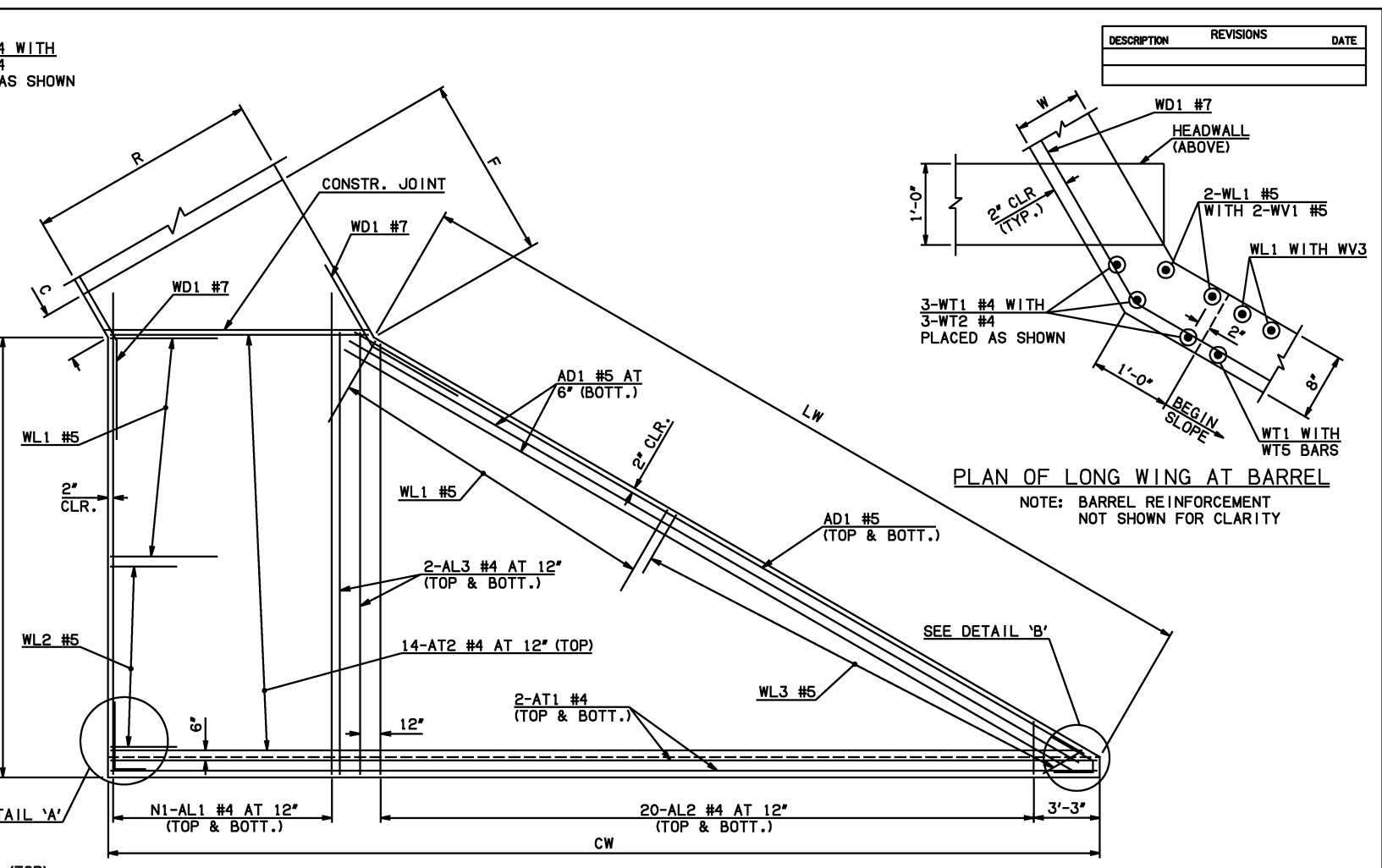
DESCRIPTION	REVISIONS	DATE



END SECTION PLAN

NOTE: SEE END SECTION DETAILS SHEET NO. 2 OF 3 FOR VARIABLE REINFORCING QUANTITIES.

SPAN	W	A	B	C	CW	D	E	F	G	H	LW	R	SW
4'	10"	6'-0"	2'-11 3/4"	4'-0 3/4"	34'-7"	3'-11 1/2"	9'-0 1/4"	10'-2"	10'-0 1/2"	12'-8 1/2"	25'-11"	10'-6"	13'-11 3/4"
5'	10"	6'-0"	2'-4 3/4"	3'-5 3/4"	36'-10 3/4"	3'-4 1/2"	9'-7 1/4"	10'-8 3/4"	10'-7 1/2"	15'-0 1/4"	25'-11"	12'-6"	13'-11 3/4"
6'	10"	7'-0"	2'-9 3/4"	3'-10 3/4"	39'-2 1/2"	3'-9 1/2"	11'-2 1/4"	12'-3 3/4"	12'-2 1/2"	17'-3 3/4"	25'-11"	14'-6"	13'-11 3/4"
8'	10"	8'-0"	2'-8"	3'-9"	43'-9 3/4"	3'-7 3/4"	13'-4"	14'-5 3/4"	14'-4 1/4"	21'-11 1/4"	25'-11"	18'-6"	13'-11 3/4"
10'	10"	9'-0"	2'-6"	3'-7 1/4"	48'-5 1/4"	3'-5 3/4"	15'-6"	16'-7 1/2"	16'-6 1/4"	26'-6 3/4"	25'-11"	22'-6"	13'-11 3/4"



APRON BAR LIST

MARK	SIZE	FORM	ONE APRON SHOWN															
			4' SPAN			5' SPAN			6' SPAN			8' SPAN			10' SPAN			
QTY.	LENGTH	REMARKS	QTY.	LENGTH	REMARKS	QTY.	LENGTH	REMARKS	QTY.	LENGTH	REMARKS	QTY.	LENGTH	REMARKS	QTY.	LENGTH	REMARKS	
AC1 #4	BNT	2	3'-8"	2	3'-8"	2	3'-8"	2	3'-8"	2	3'-8"	2	3'-8"	2	3'-8"	2	3'-8"	
AC2 #4	BNT	2	3'-8"	2	3'-8"	2	3'-8"	2	3'-8"	2	3'-8"	2	3'-8"	2	3'-8"	2	3'-8"	
AD1 #5	STR	4	27'-6"	4	27'-6"	4	27'-6"	4	27'-6"	4	27'-6"	4	27'-6"	4	27'-6"	4	27'-6"	
AL1 #4	STR	22	16'-9"	26	16'-9"	30	16'-9"	40	16'-9"	48	16'-9"	22	16'-9"	26	16'-9"	30	16'-9"	
AL2 #4	STR	40	7'-11 1/2" AVG.	40	7'-11 1/2" AVG.	40	7'-11 1/2" AVG.	40	7'-11 1/2" AVG.	40	7'-11 1/2" AVG.	40	7'-11 1/2" AVG.	40	7'-11 1/2" AVG.	40	7'-11 1/2" AVG.	2'-6" TO 13'-5"
AL3 #4	STR	4	14'-9"	4	14'-9"	4	14'-9"	4	14'-9"	4	14'-9"	4	14'-9"	4	14'-9"	4	14'-9"	
AT1 #4	STR	4	34'-2"	4	36'-6"	4	38'-10"	4	43'-5"	4	48'-1"	4	53'-6"	4	59'-1"	4	64'-6"	
AT2 #4	STR	14	22'-2 1/2" AVG.	14	24'-6" AVG.	14	26'-10" AVG.	14	29'-4" AVG.	14	31'-8" AVG.	14	34'-2" AVG.	14	36'-6" AVG.	14	39'-0" AVG.	10'-11" TO 33'-6"

① QUANTITY SHOWN REPRESENTS TWO SETS.

APPROVED BY BRIDGE ENGINEER *Scott J. Smith* DATE 4/2/10

OKLAHOMA DEPT. OF TRANSPORTATION
BRIDGE STANDARD (ENGLISH)

RCB CULVERTS - END SECTION DETAILS
DOUBLE CELL - 3'-0" HEIGHT - 30°
SHEET NO. 1 OF 3

2009 SPECIFICATIONS | RCB-E2-H3-30-1 | 01E | B-705E