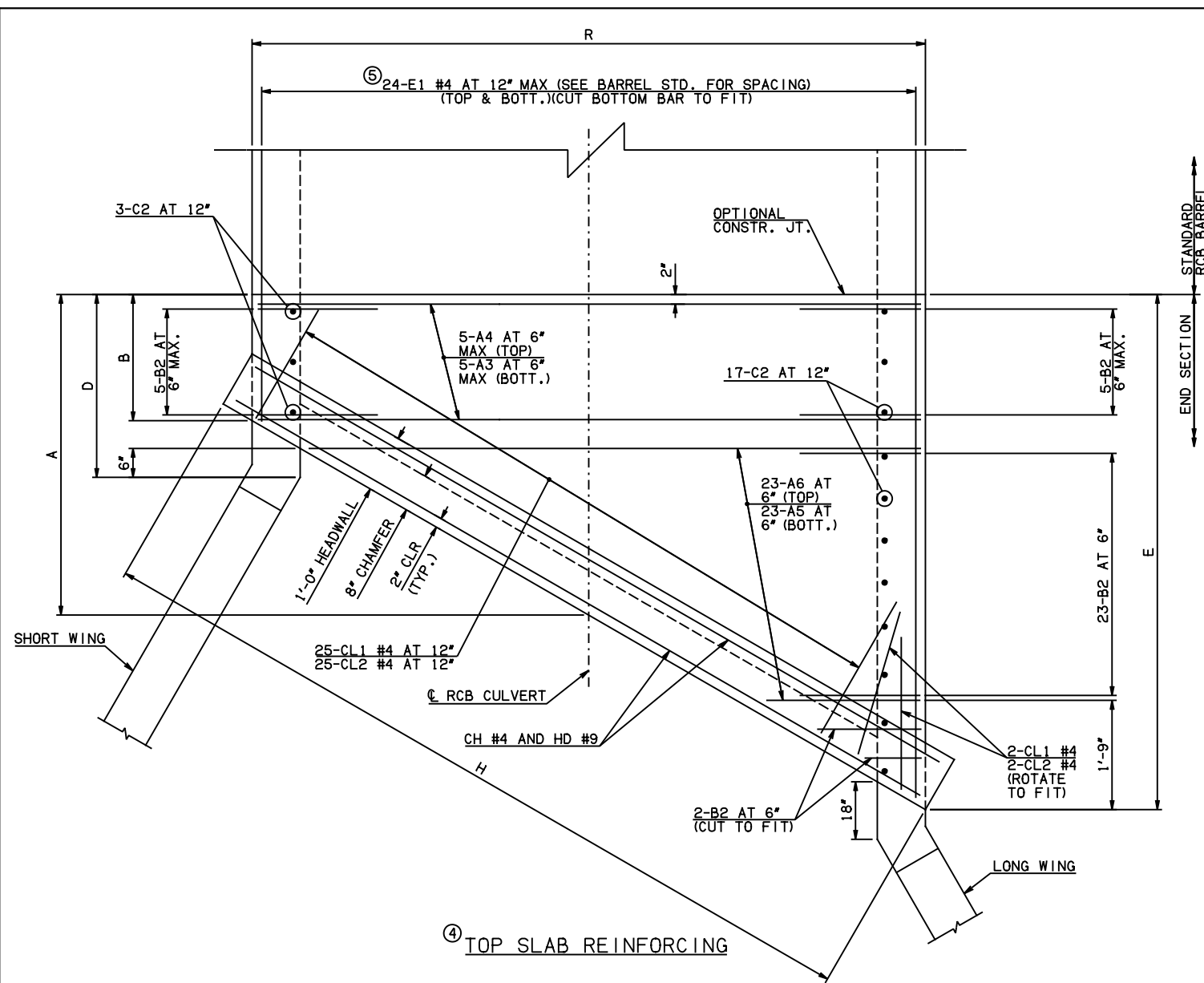
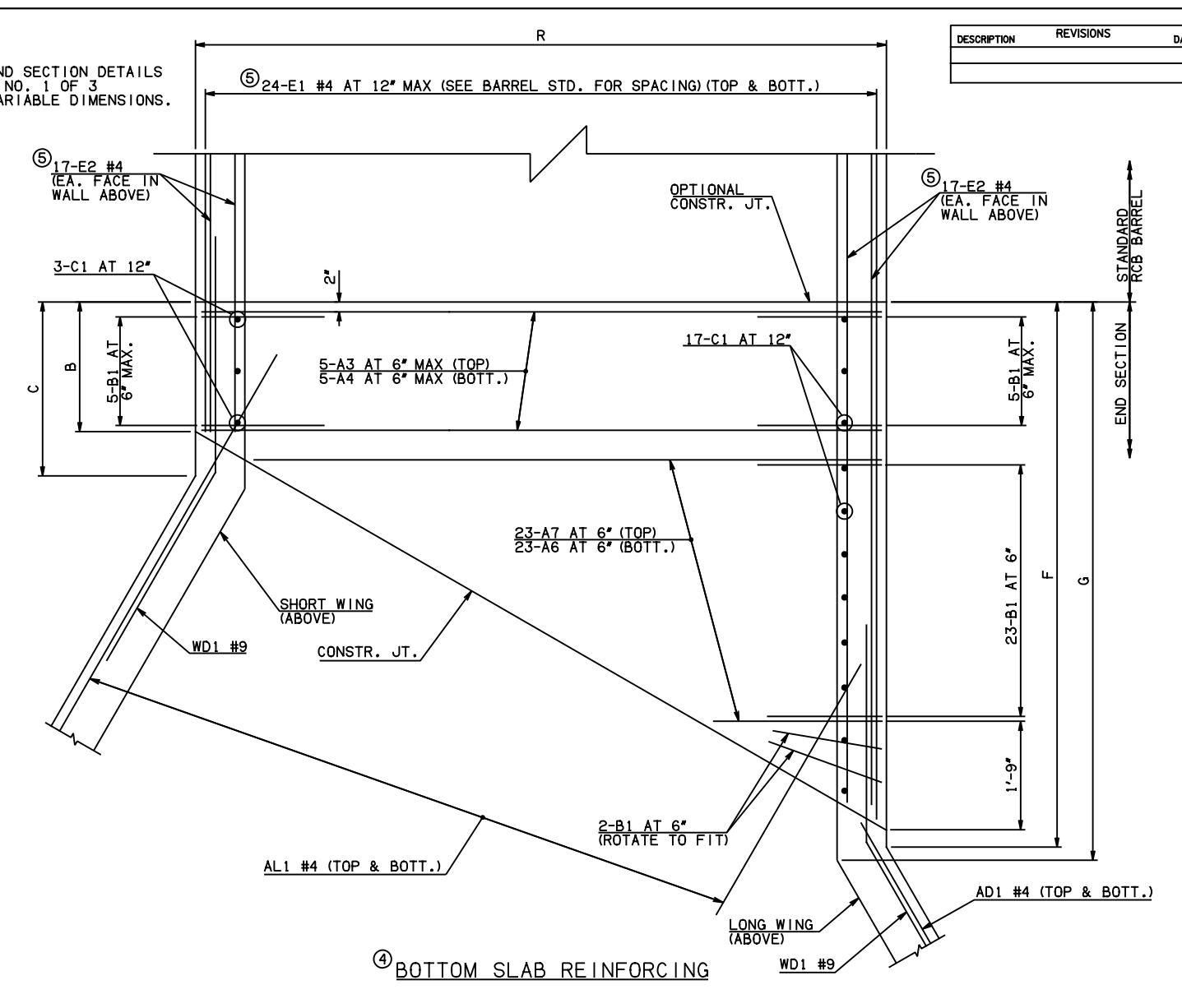


DESCRIPTION	REVISIONS	DATE



NOTE: SEE END SECTION DETAILS SHEET NO. 1 OF 3 FOR VARIABLE DIMENSIONS.



END CONNECTION BAR LIST					
ONE END CONNECTION SHOWN					
MARK	FORM	SIZE	QTY.	LENGTH	REMARKS
A3	STR	#9	10	22'-6"	
A4	STR	#6	10	22'-6"	
A5	STR	#9	23	10'-10 1/2" AVG.	1'-4" TO 20'-5"
A6	STR	#6	46	12'-0 1/2" AVG.	2'-6" TO 21'-7"
A7	STR	#9	23	12'-0 1/2" AVG.	2'-6" TO 21'-7"
B1	BNT	#8	35	9'-1"	
B2	BNT	#8	35	22'-4"	
C1	STR	#7	20	3'-10"	
C2	STR	#7	20	18'-4"	
E1	STR	#4	96	8'-9" AVG.	2'-3" TO 15'-3"
E2	STR	#4	68	8'-5 1/2" AVG.	2'-3" AND 14'-8"

QUANTITIES		
ITEM	UNIT	20' SPAN
CLASS AA CONCRETE	CY	398.10
REINFORCING STEEL	LB	43560.00

NOTE: QUANTITIES ABOVE ARE FOR ONE END SECTION, WHICH IS COMPRISED OF ONE END CONNECTION, ONE HEADWALL, ONE APRON, AND TWO WINGWALLS.

- NOTES: ③ QUANTITY SHOWN REPRESENTS TWO SETS.
 ④ FOR FURTHER INFORMATION REGARDING END SECTION BARS A, B, C, E1, AND E2, REFER TO RCB CULVERT - BARREL DETAILS.
 ⑤ LENGTHS OF E1 & E2 BARS SHOWN ARE ADDITIONAL LENGTHS REQUIRED FOR THE END SECTION. LAP SPLICES, AS REQUIRED, SHALL BE IN ACCORDANCE WITH RCB BARREL STANDARD NOTES.
 ⑥ 4-SETS OF 24-E1 BARS REQUIRED.
 ⑦ 2-SETS OF 34-E2 BARS REQUIRED WITH LENGTHS AS SHOWN CORRESPONDING TO SHORT EXTERIOR WALL AND LONG EXTERIOR WALL.

APPROVED BY BRIDGE ENGINEER *Scott J. Smith* DATE 4/2/10

OKLAHOMA DEPT. OF TRANSPORTATION
BRIDGE STANDARD (ENGLISH)
 RCB CULVERTS - END SECTION DETAILS
 SINGLE CELL - 17'-0" HEIGHT - 30°
 SHEET NO. 2 OF 3

2009 SPECIFICATIONS | RCB-E1-H17-30-2 | 01E | B-697E