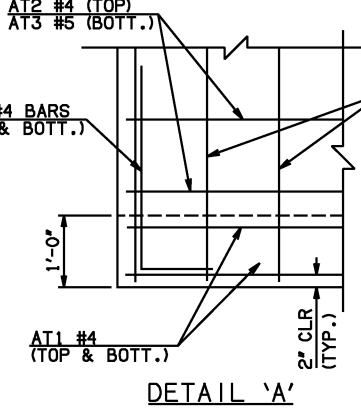
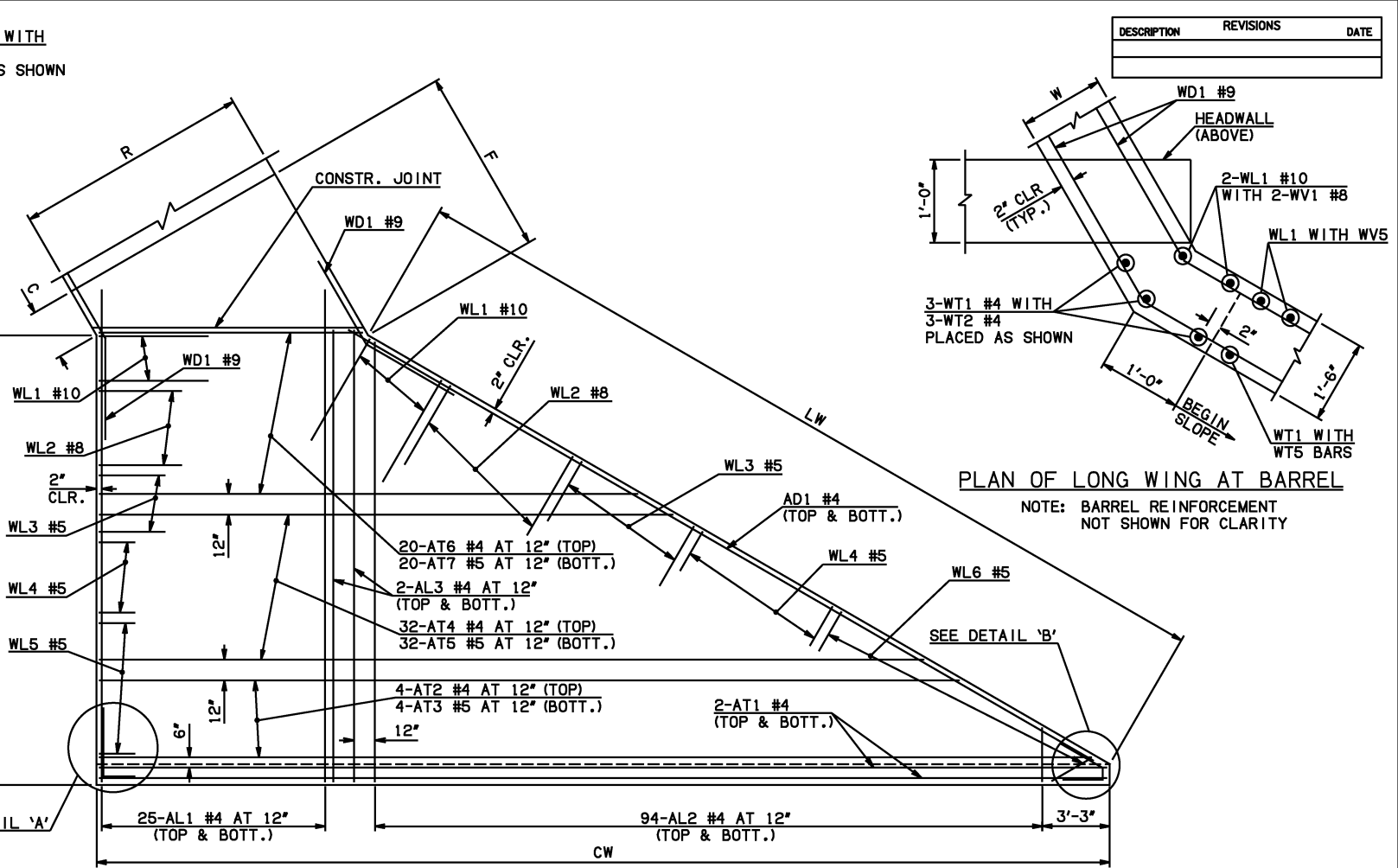


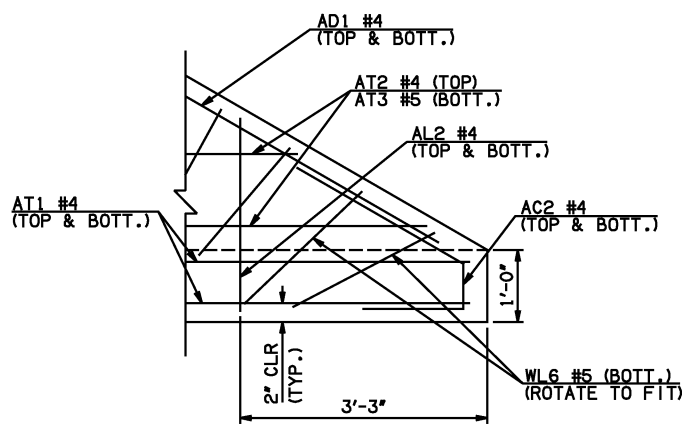
END SECTION PLAN

END SECTION VARIABLE DIMENSIONS													
SPAN	W	A	B	C	CW	D	E	F	G	H	LW	SW	
20'	17'	9'-0"	2'-5"	3'-2 1/4"	122'-8 3/4"	3'-8 3/4"	15'-7"	15'-8 3/4"	16'-3 1/4"	28'-11 1/4"	111'-7 1/2"	22'-10"	56'-3 1/4"

APRON AND HEADWALL BAR LIST					
ONE APRON AND ONE HEADWALL SHOWN					
MARK	SIZE	FORM	QTY.	LENGTH	REMARKS
				20' SPAN	
	AC1	#4 BNT	2	3'-8"	
	AC2	#4 BNT	2	3'-8"	
①	AD1	#4 STR	2	114'-0"	
	AL1	#4 STR	50	58'-9"	
③	AL2	#4 STR	188	29'-4" AVG.	2'-6" TO 56'-2"
	AL3	#4 STR	4	56'-9"	
②	AT1	#4 STR	4	127'-4"	
②	AT2	#4 STR	4	123'-11 1/2" AVG.	121'-4" TO 126'-7"
②	AT3	#5 STR	4	123'-11 1/2" AVG.	121'-4" TO 126'-7"
①	AT4	#4 STR	32	90'-4" AVG.	63'-6" TO 117'-2"
①	AT5	#5 STR	32	90'-4" AVG.	63'-6" TO 117'-2"
	AT6	#4 STR	20	42'-9 1/2" AVG.	26'-4" TO 59'-3"
	AT7	#5 STR	20	42'-9 1/2" AVG.	26'-4" TO 59'-3"
	CH	#4 STR	4	26'-7"	
	CL1	#4 BNT	27	4'-4"	
	CL2	#4 BNT	27	4'-3"	
	HD	#9 STR	2	26'-7"	



APRON REINFORCING



DETAIL 'B'

- ① INCLUDES 2'-6" LAP
- ② INCLUDES TWO 2'-6" LAPS
- ③ QUANTITY SHOWN REPRESENTS TWO SETS.

APPROVED BY BRIDGE ENGINEER *Scott J. Smith* DATE 4/2/10

OKLAHOMA DEPT. OF TRANSPORTATION
BRIDGE STANDARD (ENGLISH)
 RCB CULVERTS - END SECTION DETAILS
 SINGLE CELL - 17'-0" HEIGHT - 30°
 SHEET NO. 1 OF 3

2009 SPECIFICATIONS | RCB-E1-H17-30-1 | 01E | B-696E