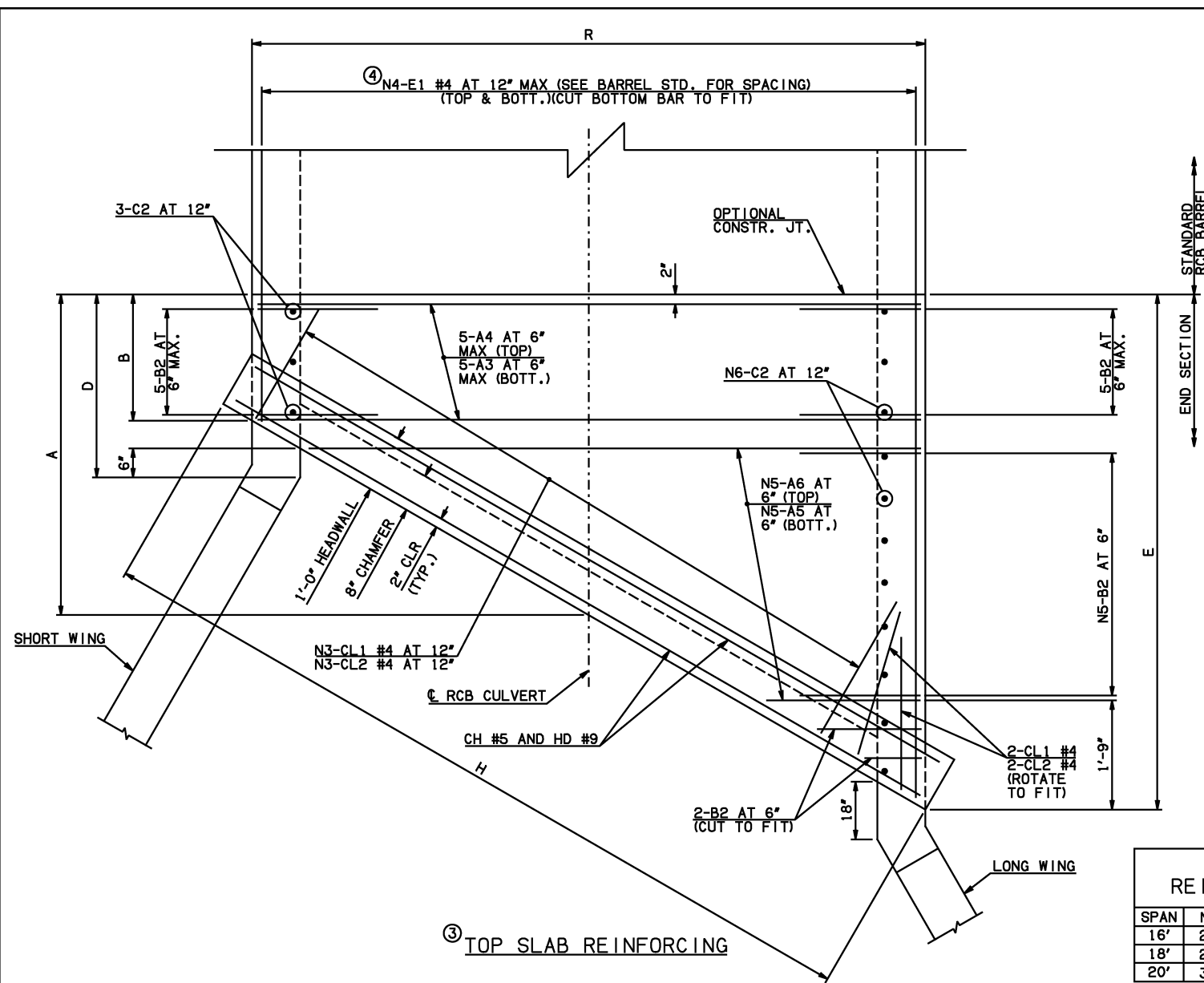
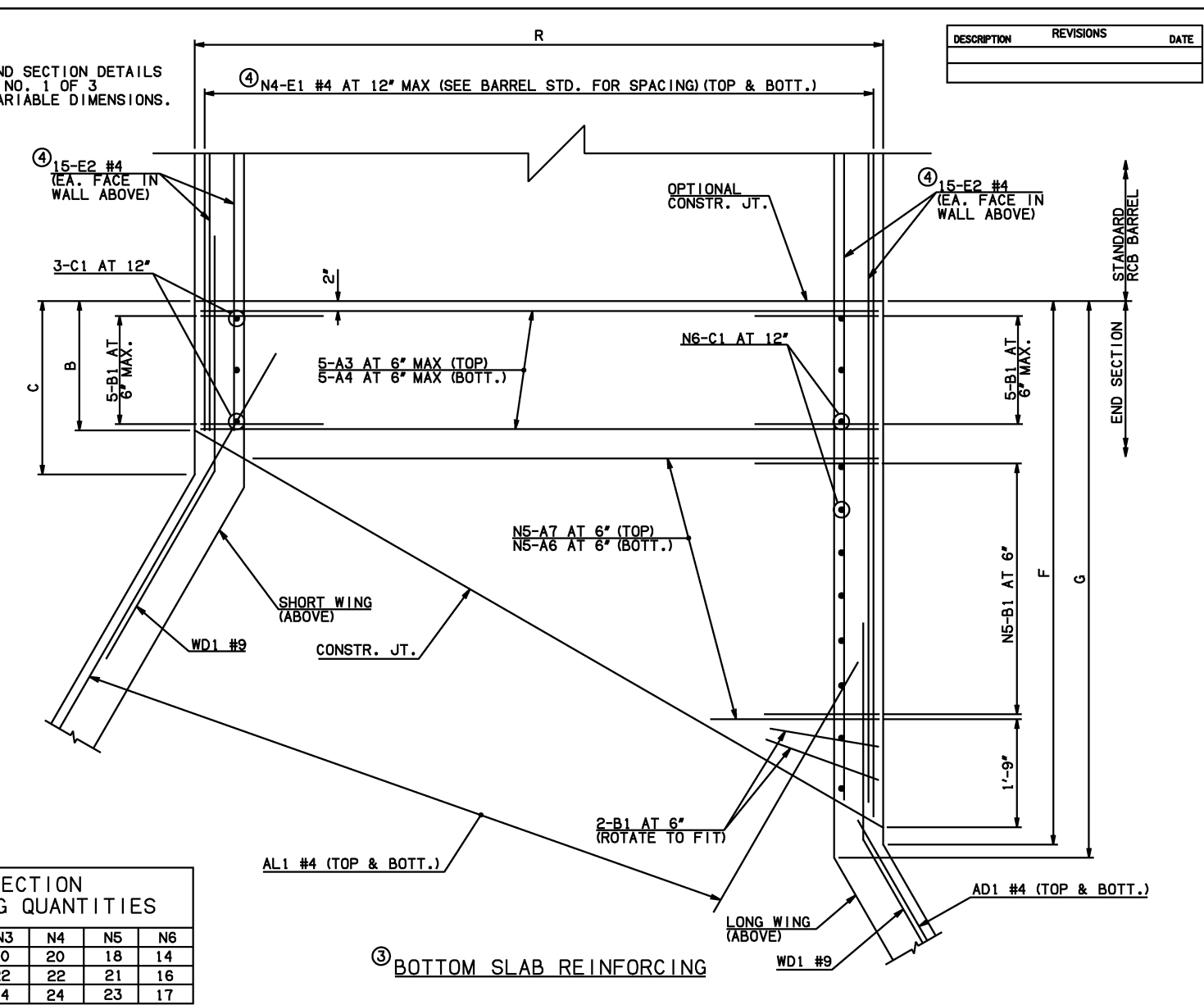


DESCRIPTION	REVISIONS	DATE



NOTE: SEE END SECTION DETAILS SHEET NO. 1 OF 3 FOR VARIABLE DIMENSIONS.



SPAN	N1	N2	N3	N4	N5	N6
16'	27	23	20	20	18	14
18'	28	22	22	22	21	16
20'	30	20	24	24	23	17

MARK	FORM	SIZE	QTY.	16' SPAN		18' SPAN		20' SPAN		REMARKS			
				LENGTH	REMARKS	LENGTH	REMARKS	LENGTH	REMARKS				
A3	STR	#8	10	18'-4"		#9	10	20'-2"					
A4	STR	#6	10	18'-4"		#6	10	20'-2"					
A5	STR	#8	18	8'-8 1/2" AVG.	1'-4" TO 16'-1"	#9	21	10'-0" AVG.	1'-4" TO 18'-8"	#9	23	10'-10 1/2" AVG.	1'-4" TO 20'-5"
A6	STR	#6	36	9'-10 1/2" AVG.	2'-6" TO 17'-3"	#6	42	11'-2" AVG.	2'-6" TO 19'-10"	#6	46	12'-0 1/2" AVG.	2'-6" TO 21'-7"
A7	STR	#8	18	9'-10 1/2" AVG.	2'-6" TO 17'-3"	#9	21	11'-2" AVG.	2'-6" TO 19'-10"	#9	23	12'-0 1/2" AVG.	2'-6" TO 21'-7"
B1	BNT	#7	30	7'-7"		#8	33	8'-6"		#8	35	8'-8"	
B2	BNT	#7	30	19'-9"		#8	33	19'-9"		#8	35	19'-11"	
C1	STR	#6	17	3'-4"		#6	19	3'-4"		#6	20	3'-5"	
C2	STR	#6	17	16'-3"		#6	19	16'-3"		#6	20	16'-4"	
E1	STR	#4	80	7'-9 1/2" AVG.	2'-6" TO 13'-1"	#4	88	7'-9" AVG.	1'-11" TO 13'-7"	#4	96	8'-9" AVG.	2'-4" TO 15'-2"
E2	STR	#4	60	7'-6" AVG.	2'-6" AND 12'-6"	#4	60	7'-6" AVG.	1'-11" AND 13'-1"	#4	60	8'-6" AVG.	2'-4" AND 14'-8"

ITEM	UNIT	16' SPAN	18' SPAN	20' SPAN
CLASS AA CONCRETE	CY	254.00	260.60	273.20
REINFORCING STEEL	LB	32800.00	35110.00	36370.00

NOTE: QUANTITIES ABOVE ARE FOR ONE END SECTION, WHICH IS COMPRISED OF ONE END CONNECTION, ONE HEADWALL, ONE APRON, AND TWO WINGWALLS.

- NOTES: ② QUANTITY SHOWN REPRESENTS TWO SETS.  
 ③ FOR FURTHER INFORMATION REGARDING END SECTION BARS A, B, C, E1, AND E2, REFER TO RCB CULVERT - BARREL DETAILS.  
 ④ LENGTHS OF E1 & E2 BARS SHOWN ARE ADDITIONAL LENGTHS REQUIRED FOR THE END SECTION. LAP SPLICES, AS REQUIRED, SHALL BE IN ACCORDANCE WITH RCB BARREL STANDARD NOTES.

- ⑤ 4-SETS OF N4-E1 BARS REQUIRED.  
 ⑥ 2-SETS OF 30-E2 BARS REQUIRED WITH LENGTHS AS SHOWN CORRESPONDING TO SHORT EXTERIOR WALL AND LONG EXTERIOR WALL.

APPROVED BY BRIDGE ENGINEER *Scott J. Smith* DATE 4/2/10

**OKLAHOMA DEPT. OF TRANSPORTATION**  
**BRIDGE STANDARD (ENGLISH)**  
 RCB CULVERTS - END SECTION DETAILS  
 SINGLE CELL - 15'-0" HEIGHT - 30°  
 SHEET NO. 2 OF 3

2009 SPECIFICATIONS | RCB-E1-H15-30-2 | 01E | B-694E