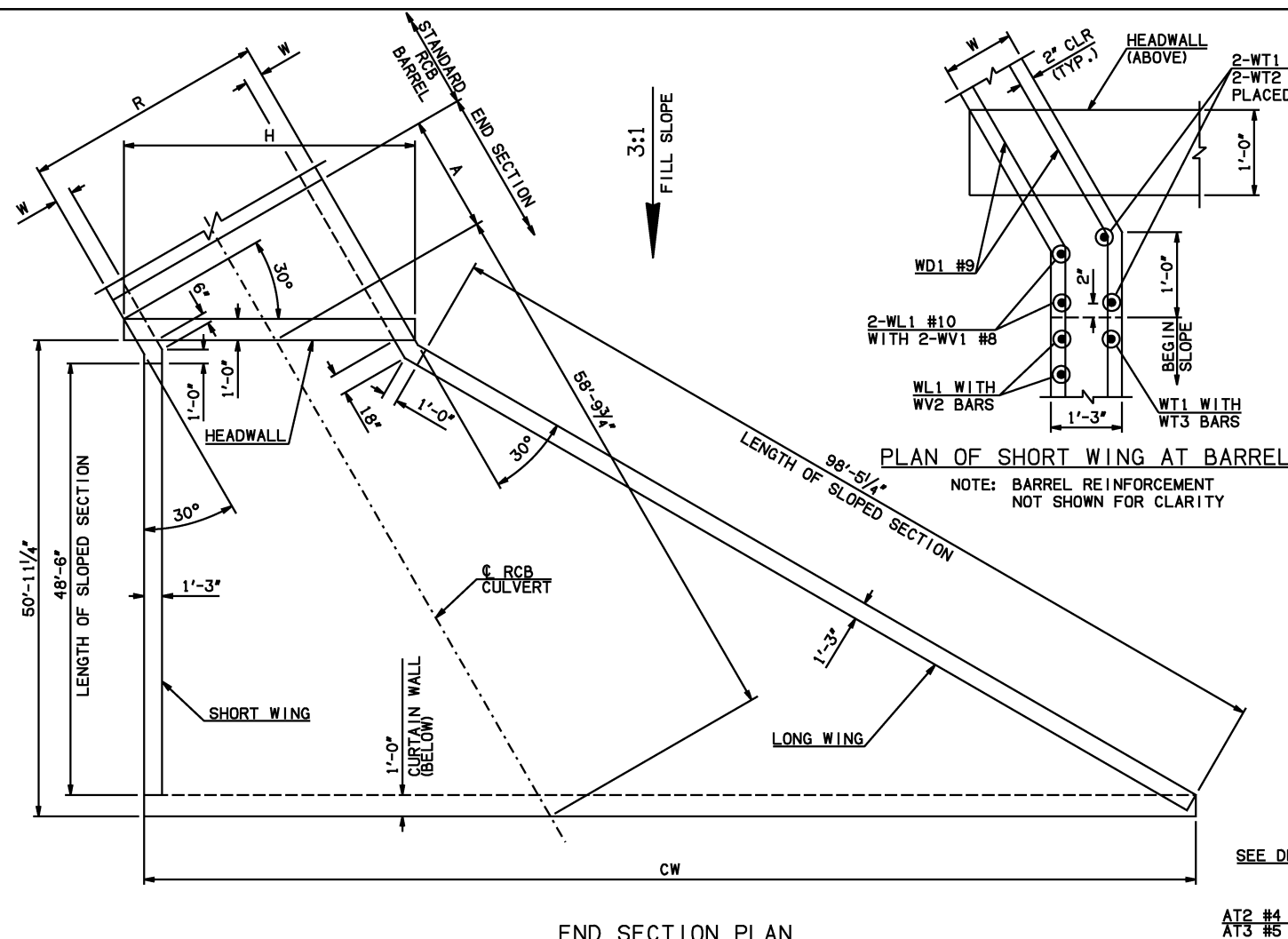


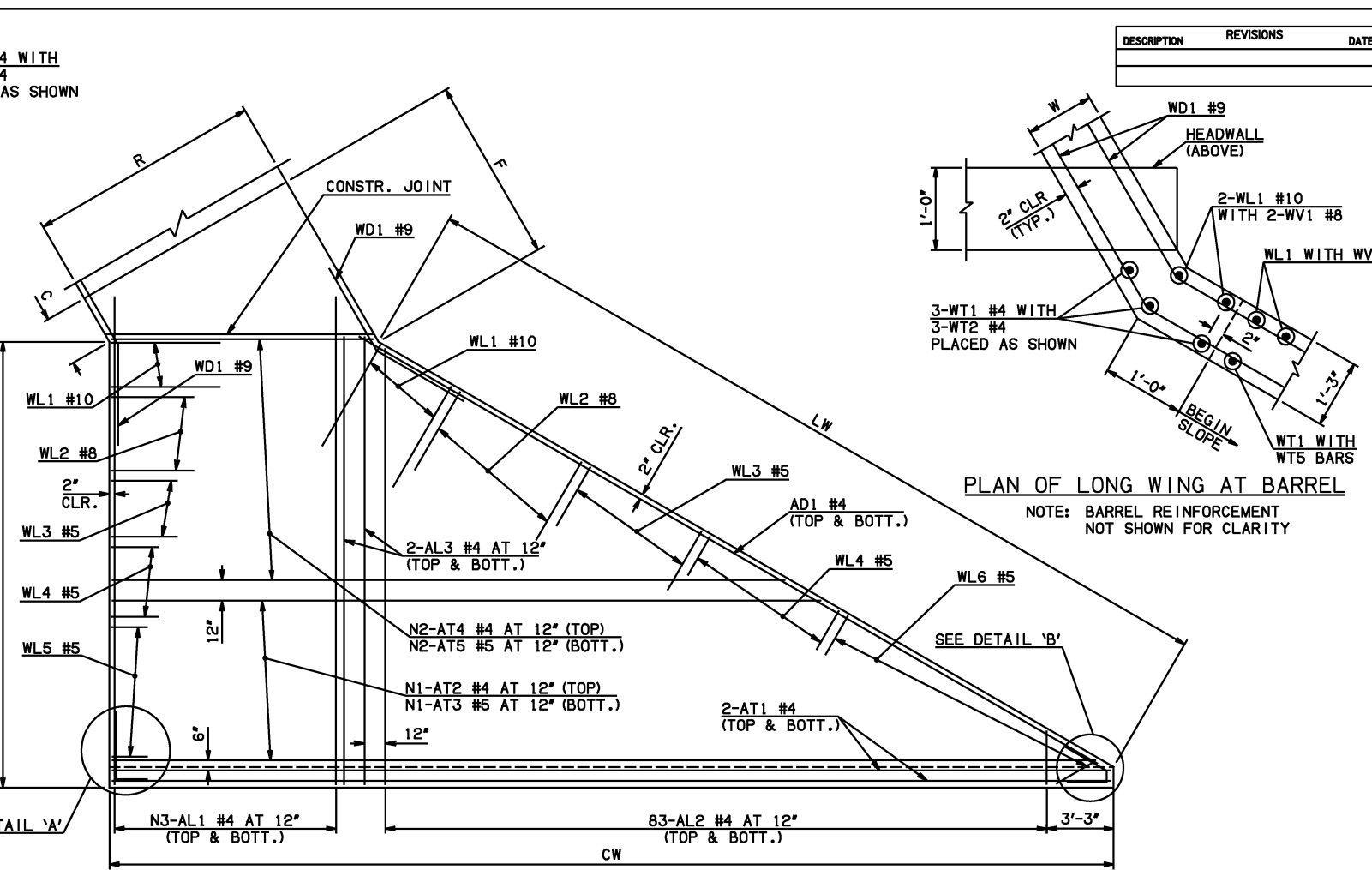
DESCRIPTION	REVISIONS	DATE



END SECTION PLAN

NOTE: SEE END SECTION DETAILS SHEET NO. 2 OF 3 FOR VARIABLE REINFORCING QUANTITIES.

END SECTION VARIABLE DIMENSIONS													
SPAN	W	A	B	C	CW	D	E	F	G	H	LW	R	SW
16'	16"	8'-0"	2'-7 1/4"	3'-8 1/4"	106'-11 1/2"	3'-10 1/2"	13'-4 3/4"	13'-11 1/4"	14'-1 1/2"	22'-1 1/2"	98'-11 1/4"	18'-8"	50'-0"
18'	15"	8'-0"	2'-1"	2'-11 3/4"	109'-3 1/4"	3'-3 3/4"	13'-11"	14'-4 1/4"	14'-8 1/4"	24'-3"	99'-1 1/4"	20'-6"	50'-2"
20'	15"	9'-0"	2'-6"	3'-4 3/4"	111'-7"	3'-8 3/4"	15'-6"	15'-11 1/4"	16'-3 1/4"	26'-6 3/4"	99'-1 1/4"	22'-6"	50'-2"



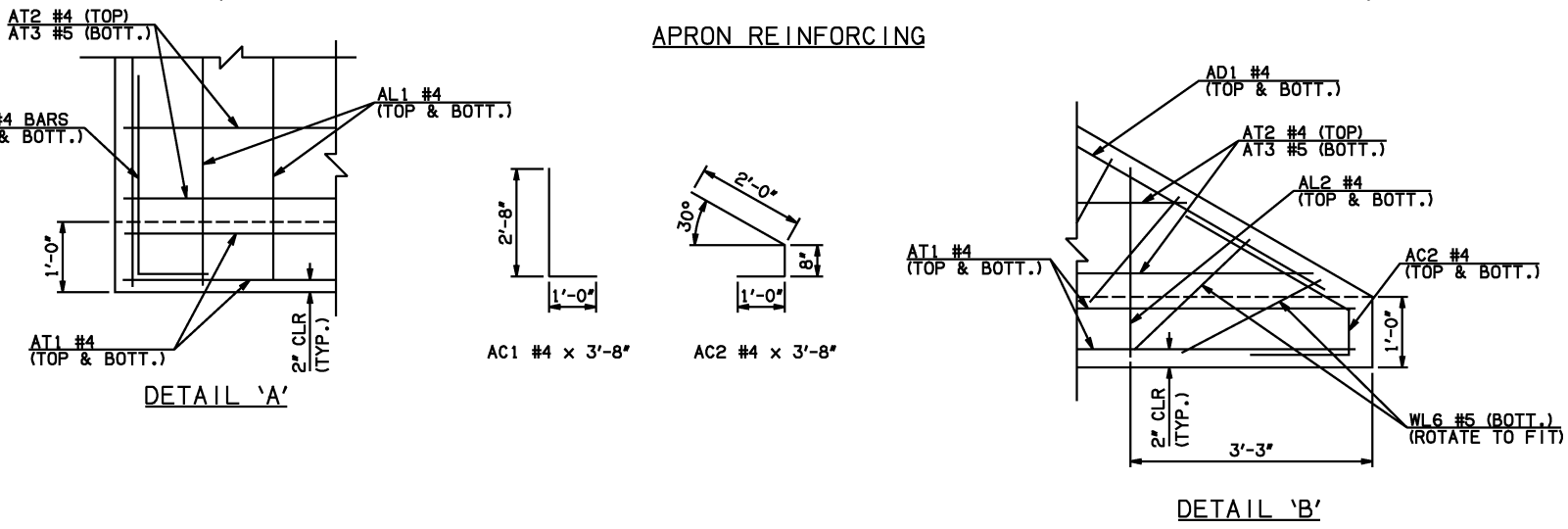
PLAN OF SHORT WING AT BARREL

NOTE: BARREL REINFORCEMENT NOT SHOWN FOR CLARITY

PLAN OF LONG WING AT BARREL

NOTE: BARREL REINFORCEMENT NOT SHOWN FOR CLARITY

APRON REINFORCING



APRON AND HEADWALL BAR LIST												
MARK	SIZE	FORM	ONE APRON AND ONE HEADWALL SHOWN									
			16' SPAN			18' SPAN			20' SPAN			
			QTY.	LENGTH	REMARKS	QTY.	LENGTH	REMARKS	QTY.	LENGTH	REMARKS	
	AC1	#4	BNT	2	3'-8"		2	3'-8"		2	3'-8"	
	AC2	#4	BNT	2	3'-8"		2	3'-8"		2	3'-8"	
①	AD1	#4	STR	2	102'-0"		2	102'-0"		2	102'-0"	
	AL1	#4	STR	40	52'-9"		44	52'-9"		48	52'-9"	
②	AL2	#4	STR	166	26'-2" AVG.	2'-6" TO 49'-10"	166	26'-2" AVG.	2'-8" TO 49'-10"	166	26'-2" AVG.	2'-6" TO 49'-10"
	AL3	#4	STR	4	50'-9"		4	50'-9"		4	50'-9"	
①	AT1	#4	STR	4	109'-1"		4	111'-5"		4	113'-8"	
①	AT2	#4	STR	27	85'-10" AVG.	63'-4" TO 108'-4"	28	87'-3 1/2" AVG.	63'-11" TO 110'-8"	30	87'-10 1/2" AVG.	62'-9" TO 113'-0"
①	AT3	#5	STR	27	85'-10" AVG.	63'-4" TO 108'-4"	28	87'-3 1/2" AVG.	63'-11" TO 110'-8"	30	87'-10 1/2" AVG.	62'-9" TO 113'-0"
	AT4	#4	STR	23	40'-0 1/2" AVG.	21'-0" TO 59'-1"	22	41'-5 1/2" AVG.	23'-3" TO 59'-8"	20	42'-0 1/2" AVG.	25'-7" TO 58'-6"
	AT5	#5	STR	23	40'-0 1/2" AVG.	21'-0" TO 59'-1"	22	41'-5 1/2" AVG.	23'-3" TO 59'-8"	20	42'-0 1/2" AVG.	25'-7" TO 58'-6"
	CH	#5	STR	4	21'-9"		4	23'-10"		4	26'-2"	
	CL1	#4	BNT	22	4'-4"		24	4'-4"		26	4'-4"	
	CL2	#4	BNT	22	4'-3"		24	4'-3"		26	4'-3"	
	HD	#9	STR	2	21'-9"		2	23'-10"		2	26'-2"	

- ① INCLUDES 2'-6" LAP
- ② QUANTITY SHOWN REPRESENTS TWO SETS.

APPROVED BY BRIDGE ENGINEER *[Signature]* DATE 4/2/10

OKLAHOMA DEPT. OF TRANSPORTATION
BRIDGE STANDARD (ENGLISH)
 RCB CULVERTS - END SECTION DETAILS
 SINGLE CELL - 15'-0" HEIGHT - 30°
 SHEET NO. 1 OF 3

2009 SPECIFICATIONS RCB-E1-H15-30-1 01E
 B-693E