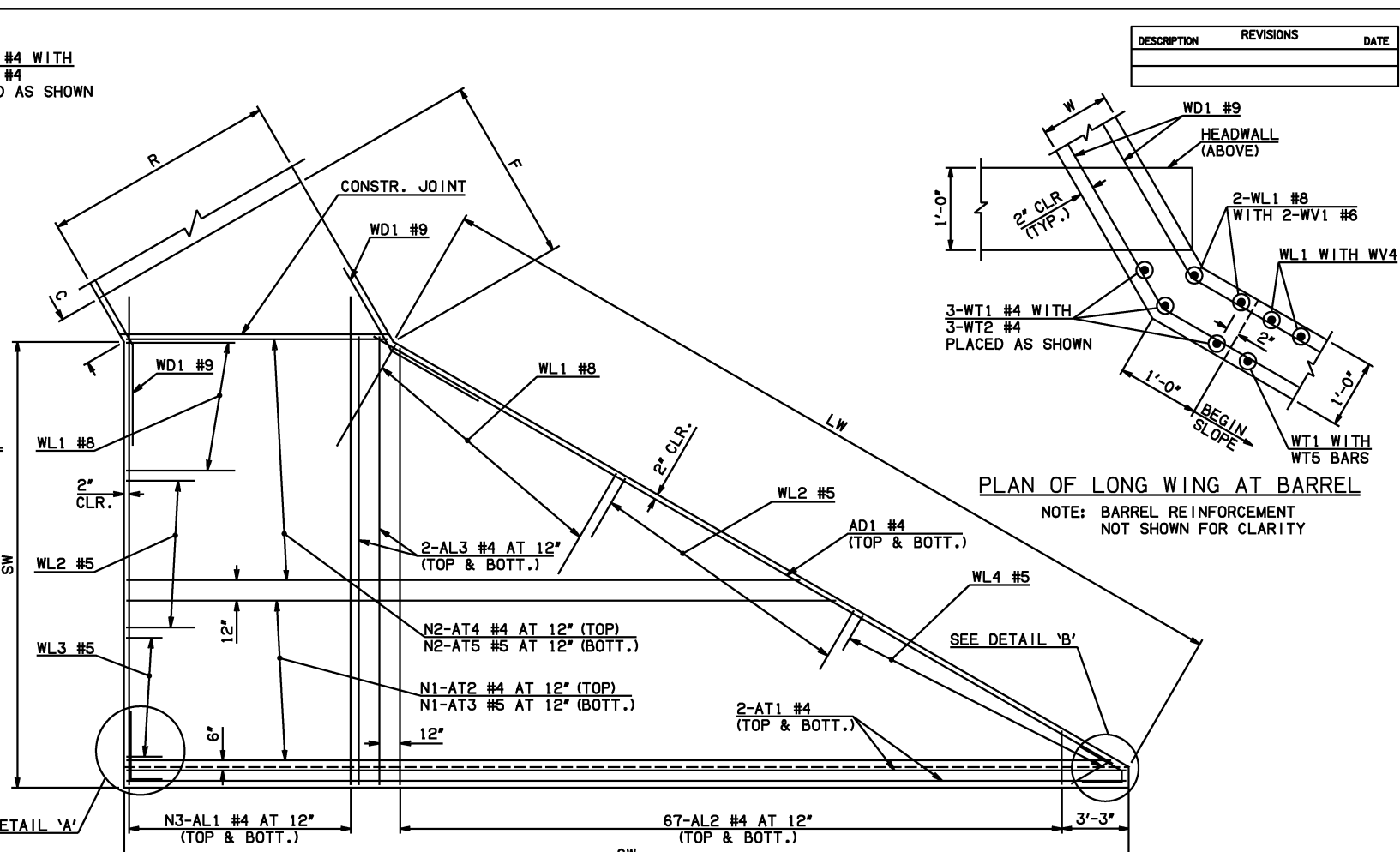
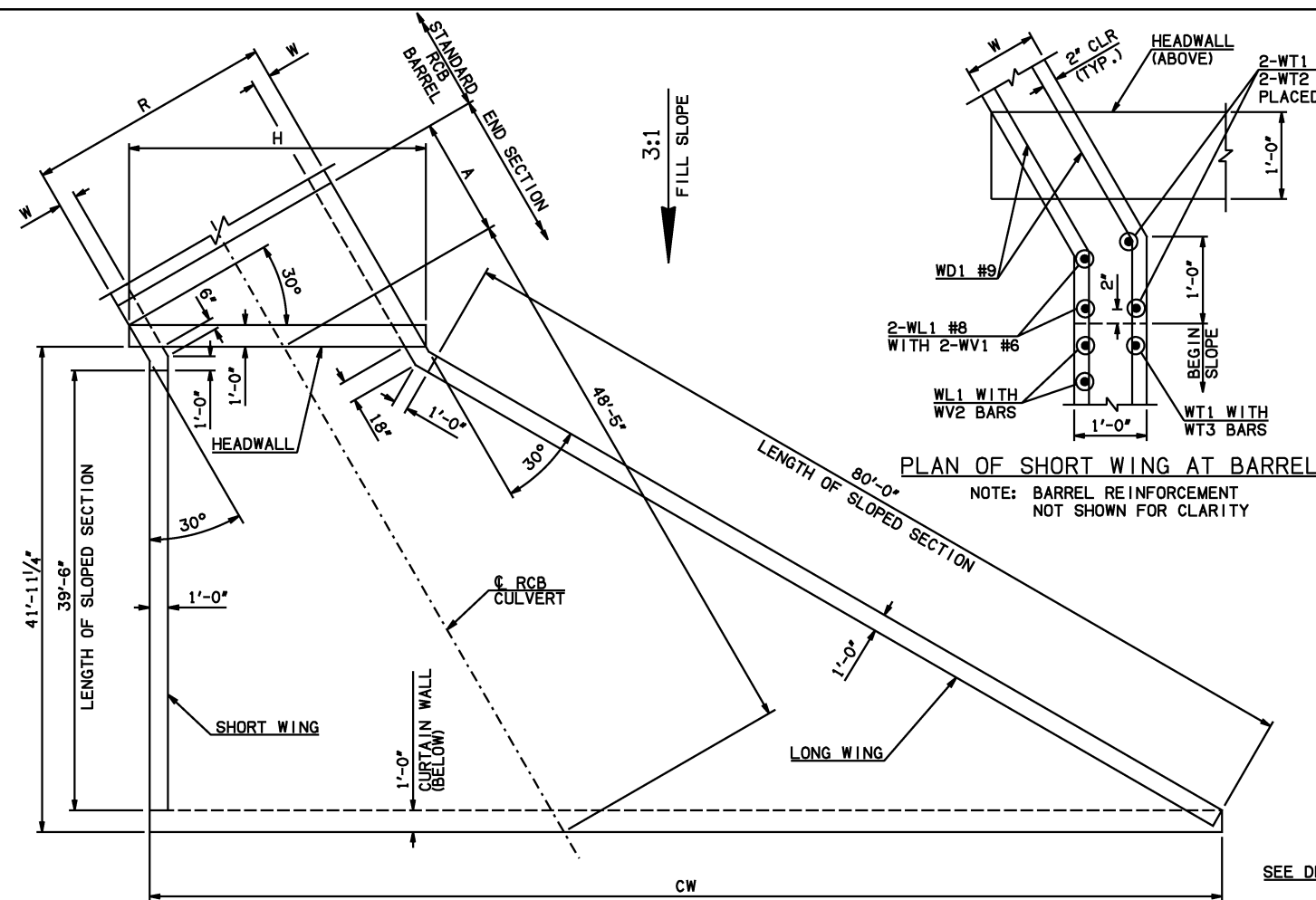
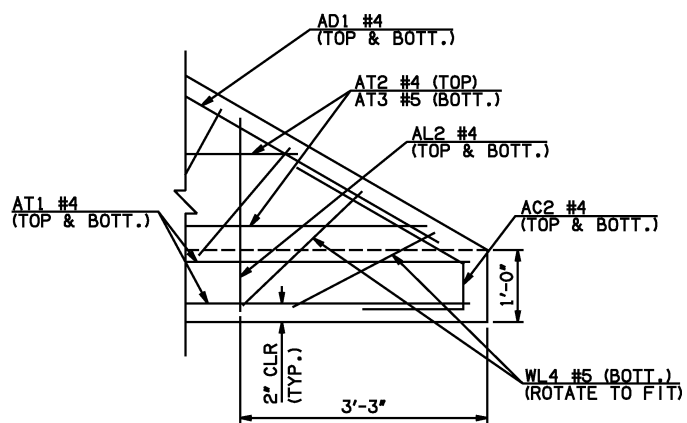
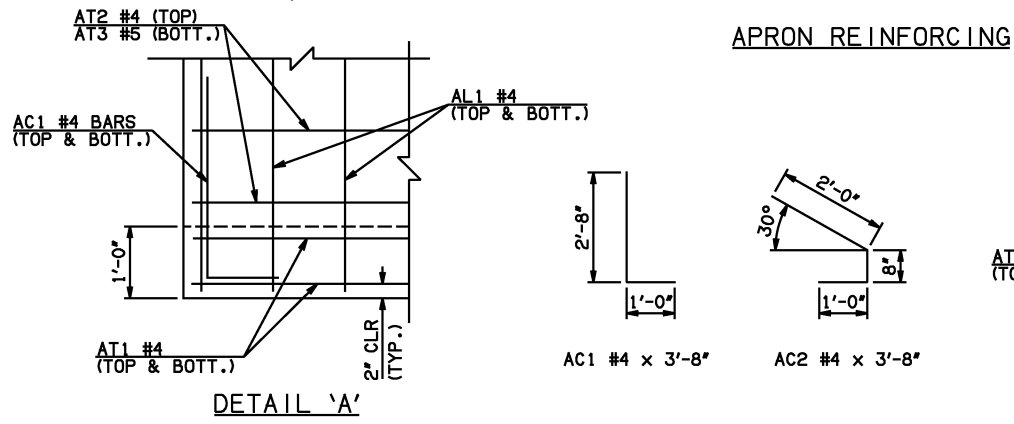


DESCRIPTION	REVISIONS	DATE



NOTE: SEE END SECTION DETAILS SHEET NO. 2 OF 3 FOR VARIABLE REINFORCING QUANTITIES.

SPAN	W	A	B	C	CW	D	E	F	G	H	LW	R	SW
12'	12'	7'-0"	2'-11 1/2"	3'-9 1/4"	86'-0"	4'-0 1/2"	11'-0 1/2"	11'-8 1/4"	11'-11 1/2"	16'-9"	80'-8 3/4"	14'-0"	41'-2 3/4"
14'	13'	7'-0"	2'-4"	3'-4"	88'-3 3/4"	3'-5 1/2"	11'-8"	12'-5"	12'-6 1/2"	19'-3"	80'-6 3/4"	16'-2"	41'-0 3/4"
16'	16'	8'-0"	2'-7 1/4"	4'-2 1/4"	90'-7 1/2"	3'-10 1/2"	13'-4 3/4"	14'-5 1/4"	14'-1 1/2"	22'-1 1/2"	80'-0 3/4"	18'-8"	40'-6 3/4"
18'	15'	8'-0"	2'-1"	3'-5 3/4"	92'-11 1/4"	3'-3 3/4"	13'-11"	14'-8 1/4"	14'-8 1/4"	24'-3"	80'-2 3/4"	20'-6"	40'-8 3/4"
20'	15'	9'-0"	2'-6"	3'-10 3/4"	95'-3"	3'-8 3/4"	15'-6"	16'-5 1/4"	16'-3 1/4"	26'-6 3/4"	80'-2 3/4"	22'-6"	40'-8 3/4"



APRON BAR LIST

MARK	SIZE	FORM	ONE APRON SHOWN																			
			12' SPAN				14' SPAN				16' SPAN				18' SPAN				20' SPAN			
			QTY.	LENGTH	REMARKS	QTY.	LENGTH	REMARKS	QTY.	LENGTH	REMARKS	QTY.	LENGTH	REMARKS	QTY.	LENGTH	REMARKS					
AC1	#4	BNT	2	3'-8"		2	3'-8"		2	3'-8"		2	3'-8"		2	3'-8"						
AC2	#4	BNT	2	3'-8"		2	3'-8"		2	3'-8"		2	3'-8"		2	3'-8"						
AD1	#4	STR	2	84'-0"		2	84'-0"		2	84'-0"		2	84'-0"		2	84'-0"						
AL1	#4	STR	30	43'-9"		34	43'-9"		40	43'-9"		44	43'-9"		48	43'-9"						
AL2	#4	STR	134	21'-6 1/2" AVG.	2'-6" TO 40'-7"	134	21'-6 1/2" AVG.	2'-6" TO 40'-7"	134	21'-6 1/2" AVG.	2'-6" TO 40'-7"	134	21'-6 1/2" AVG.	2'-6" TO 40'-7"	134	21'-6 1/2" AVG.	2'-6" TO 40'-7"					
AL3	#4	STR	4	41'-9"		4	41'-9"		4	41'-9"		4	41'-9"		4	41'-9"						
AT1	#4	STR	4	88'-2"		4	90'-5"		4	92'-9"		4	95'-1"		4	97'-4"						
AT2	#4	STR	15	75'-3 1/2" AVG.	63'-2" TO 87'-5"	16	76'-8 1/2" AVG.	63'-9" TO 89'-8"	18	77'-3 1/2" AVG.	62'-7" TO 92'-0"	19	78'-9" AVG.	63'-2" TO 94'-4"	20	80'-2" AVG.	63'-9" TO 96'-7"					
AT3	#5	STR	15	75'-3 1/2" AVG.	63'-2" TO 87'-5"	16	76'-8 1/2" AVG.	63'-9" TO 89'-8"	18	77'-3 1/2" AVG.	62'-7" TO 92'-0"	19	78'-9" AVG.	63'-2" TO 94'-4"	20	80'-2" AVG.	63'-9" TO 96'-7"					
AT4	#4	STR	26	37'-3" AVG.	15'-7" TO 58'-11"	25	38'-8 1/2" AVG.	17'-11" TO 59'-6"	23	39'-3 1/2" AVG.	20'-3" TO 58'-4"	22	40'-8 1/2" AVG.	22'-6" TO 58'-11"	21	42'-2" AVG.	24'-10" TO 59'-6"					
AT5	#5	STR	26	37'-3" AVG.	15'-7" TO 58'-11"	25	38'-8 1/2" AVG.	17'-11" TO 59'-6"	23	39'-3 1/2" AVG.	20'-3" TO 58'-4"	22	40'-8 1/2" AVG.	22'-6" TO 58'-11"	21	42'-2" AVG.	24'-10" TO 59'-6"					

- ① INCLUDES 2'-6" LAP
- ② QUANTITY SHOWN REPRESENTS TWO SETS

APPROVED BY BRIDGE ENGINEER *Scott J. Smith* DATE 4/2/10

OKLAHOMA DEPT. OF TRANSPORTATION
BRIDGE STANDARD (ENGLISH)
 RCB CULVERTS - END SECTION DETAILS
 SINGLE CELL - 12'-0" HEIGHT - 30°
 SHEET NO. 1 OF 3

2009 SPECIFICATIONS | RCB-E1-H12-30-1 | 01E | B-690E