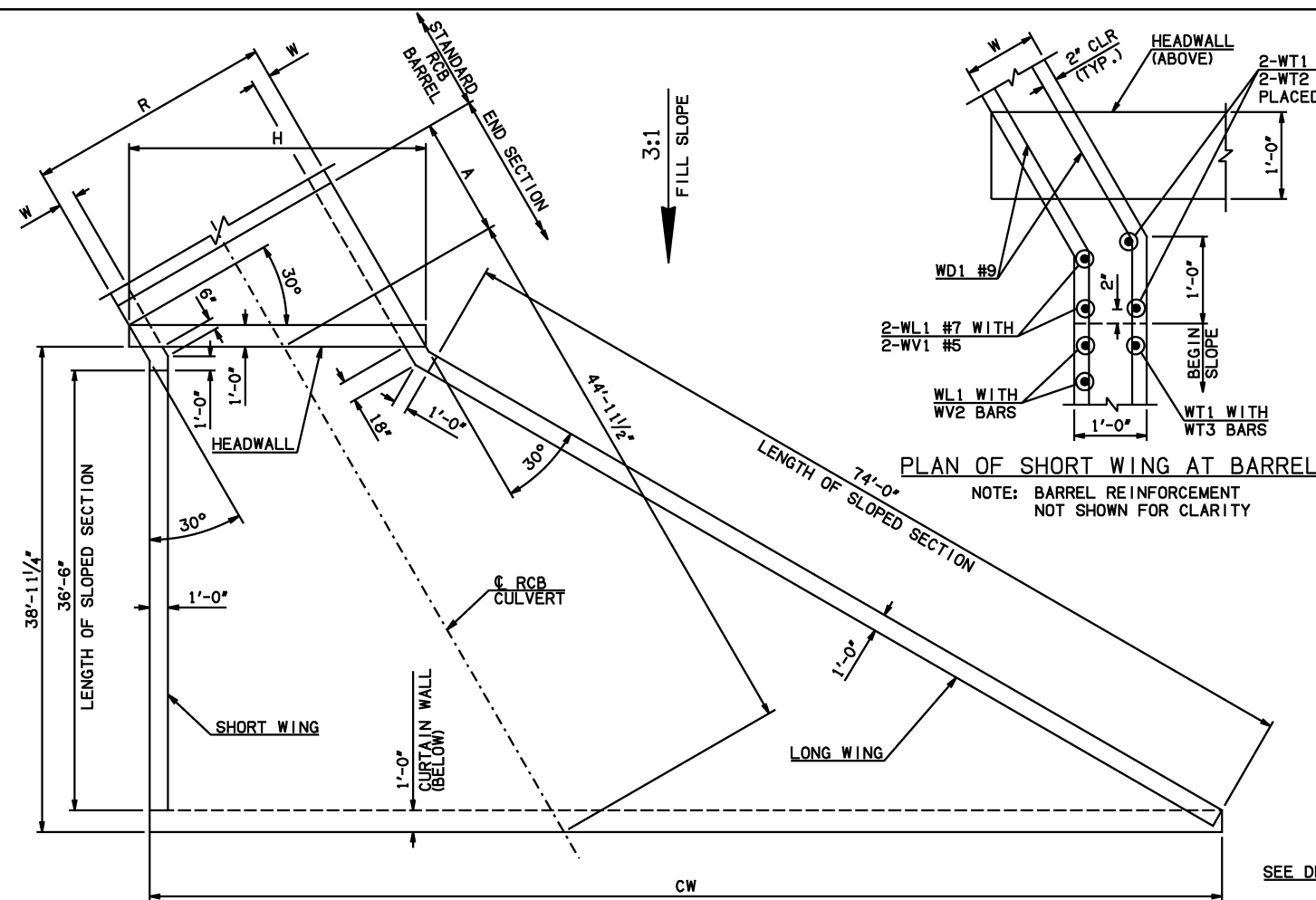


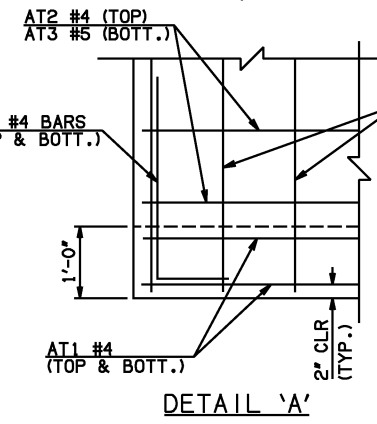
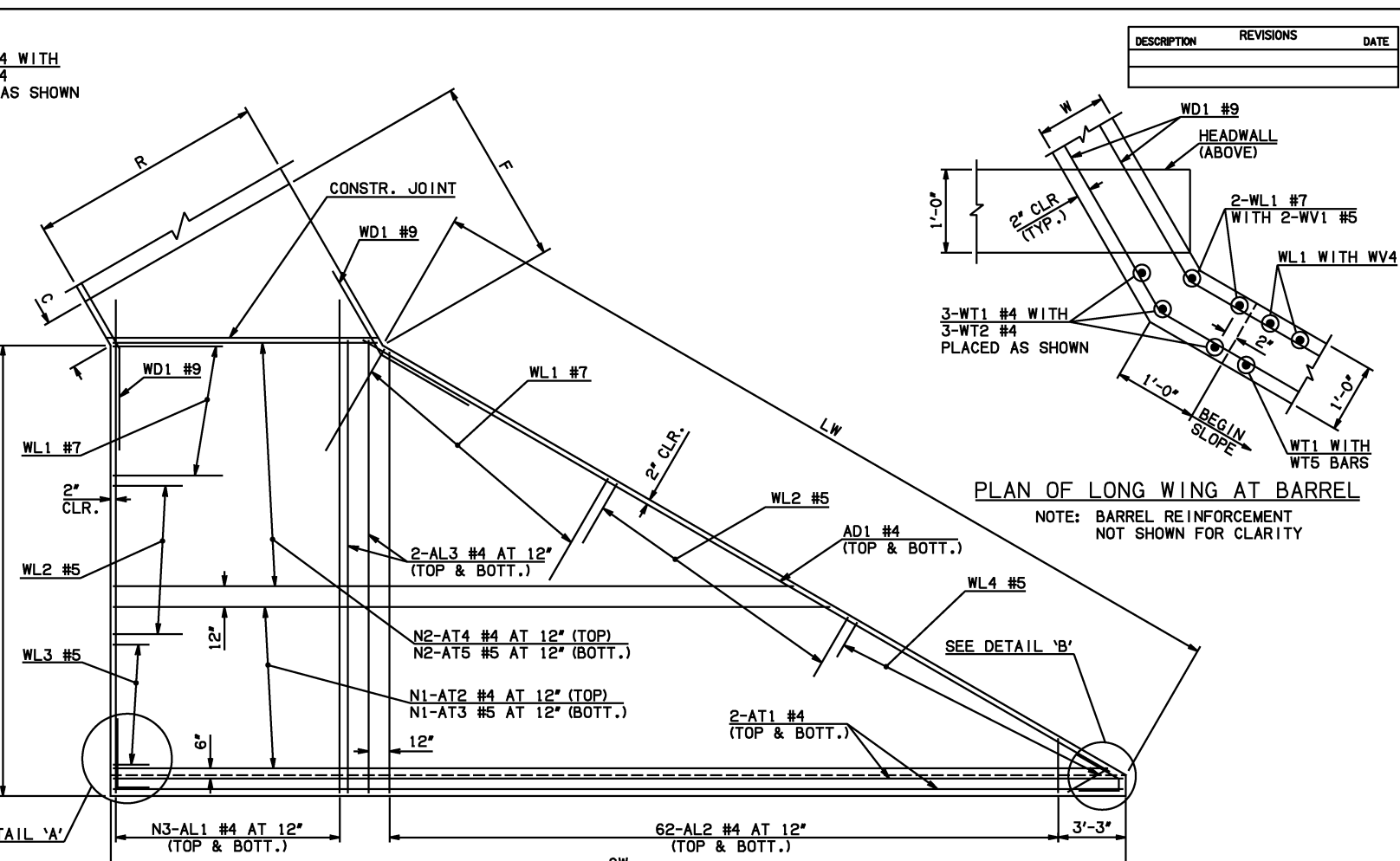
DESCRIPTION	REVISIONS	DATE



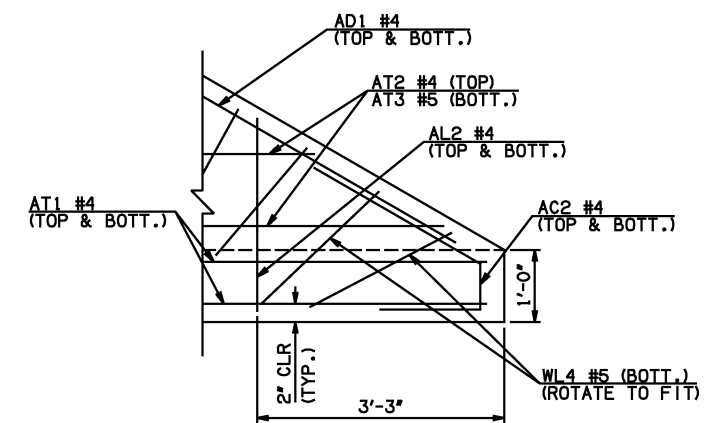
END SECTION PLAN

NOTE: SEE END SECTION DETAILS SHEET NO. 2 OF 3 FOR VARIABLE REINFORCING QUANTITIES.

END SECTION VARIABLE DIMENSIONS													
SPAN	W	A	B	C	CW	D	E	F	G	H	LW	R	SW
12'	12'	7'-0"	2'-11 1/2"	3'-9 1/4"	80'-9 3/4"	4'-0 1/2"	11'-0 1/2"	11'-8 1/4"	11'-11 1/2"	16'-9"	74'-8 3/4"	14'-0"	38'-2 3/4"
14'	13'	7'-0"	2'-4"	3'-4"	83'-1 1/2"	3'-5 1/2"	11'-8"	12'-5"	12'-6 1/2"	19'-3"	74'-6 3/4"	16'-2"	38'-0 3/4"
16'	14'	8'-0"	2'-8 1/2"	3'-10 3/4"	85'-5 1/4"	3'-10 1/2"	13'-3 1/2"	14'-1 3/4"	14'-1 1/2"	21'-9"	74'-4 3/4"	18'-4"	37'-10 3/4"
18'	15'	8'-0"	2'-1"	3'-5 3/4"	87'-8 3/4"	3'-3 3/4"	13'-11"	14'-10 1/4"	14'-8 1/4"	24'-3"	74'-2 3/4"	20'-6"	37'-8 3/4"
20'	15'	9'-0"	2'-6"	3'-10 3/4"	90'-0 1/2"	3'-8 3/4"	15'-6"	16'-5 1/4"	16'-3 1/4"	28'-6 3/4"	74'-2 3/4"	22'-6"	37'-8 3/4"



APRON REINFORCING



DETAIL 'B'

APRON BAR LIST

MARK	SIZE	FORM	ONE APRON SHOWN															
			12' SPAN			14' SPAN			16' SPAN			18' SPAN			20' SPAN			
			QTY.	LENGTH	REMARKS	QTY.	LENGTH	REMARKS	QTY.	LENGTH	REMARKS	QTY.	LENGTH	REMARKS	QTY.	LENGTH	REMARKS	
	AC1	#4	BNT	2	3'-8"		2	3'-8"		2	3'-8"		2	3'-8"		2	3'-8"	
	AC2	#4	BNT	2	3'-8"		2	3'-8"		2	3'-8"		2	3'-8"		2	3'-8"	
①	AD1	#4	STR	2	78'-0"		2	78'-0"		2	78'-0"		2	78'-0"		2	78'-0"	
	AL1	#4	STR	30	40'-9"		34	40'-9"		40	40'-9"		44	40'-9"		48	40'-9"	
②	AL2	#4	STR	124	20'-1" AVG.	2'-6" TO 37'-8"	124	20'-1" AVG.	2'-6" TO 37'-8"	124	20'-1" AVG.	2'-6" TO 37'-8"	124	20'-1" AVG.	2'-6" TO 37'-8"	124	20'-1" AVG.	2'-6" TO 37'-8"
	AL3	#4	STR	4	38'-9"		4	38'-9"		4	38'-9"		4	38'-9"		4	38'-9"	
①	AT1	#4	STR	4	82'-11"		4	85'-3"		4	87'-7"		4	89'-10"		4	92'-2"	
①	AT2	#4	STR	12	72'-8" AVG.	63'-2" TO 82'-2"	13	74'-1 1/2" AVG.	63'-9" TO 84'-6"	15	74'-8 1/2" AVG.	62'-7" TO 86'-10"	16	76'-1 1/2" AVG.	63'-2" TO 89'-1"	17	77'-7" AVG.	63'-9" TO 91'-5"
①	AT3	#5	STR	12	72'-8" AVG.	63'-2" TO 82'-2"	13	74'-1 1/2" AVG.	63'-9" TO 84'-6"	15	74'-8 1/2" AVG.	62'-7" TO 86'-10"	16	76'-1 1/2" AVG.	63'-2" TO 89'-1"	17	77'-7" AVG.	63'-9" TO 91'-5"
	AT4	#4	STR	26	37'-3" AVG.	15'-7" TO 58'-11"	25	38'-8 1/2" AVG.	17'-11" TO 59'-6"	23	39'-3 1/2" AVG.	20'-3" TO 58'-4"	22	40'-8 1/2" AVG.	22'-6" TO 58'-11"	21	42'-2" AVG.	24'-10" TO 59'-6"
	AT5	#5	STR	26	37'-3" AVG.	15'-7" TO 58'-11"	25	38'-8 1/2" AVG.	17'-11" TO 59'-6"	23	39'-3 1/2" AVG.	20'-3" TO 58'-4"	22	40'-8 1/2" AVG.	22'-6" TO 58'-11"	21	42'-2" AVG.	24'-10" TO 59'-6"

- ① INCLUDES 2'-6" LAP
- ② QUANTITY SHOWN REPRESENTS TWO SETS

APPROVED BY BRIDGE ENGINEER *Scott J. Smith* DATE 4/2/10

OKLAHOMA DEPT. OF TRANSPORTATION
BRIDGE STANDARD (ENGLISH)
 RCB CULVERTS - END SECTION DETAILS
 SINGLE CELL - 11'-0" HEIGHT - 30°
 SHEET NO. 1 OF 3

2009 SPECIFICATIONS | RCB-E1-H11-30-1 | 01E | B-687E