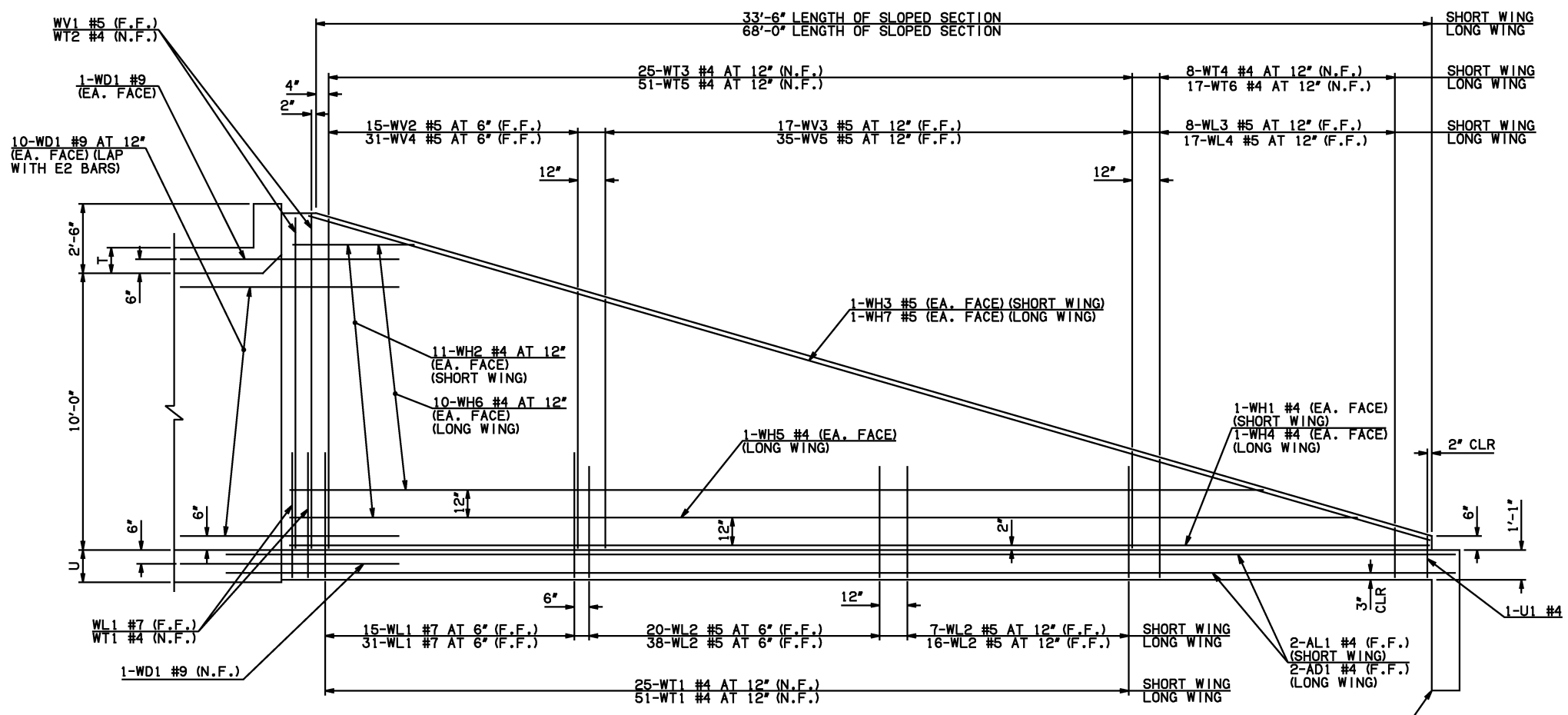
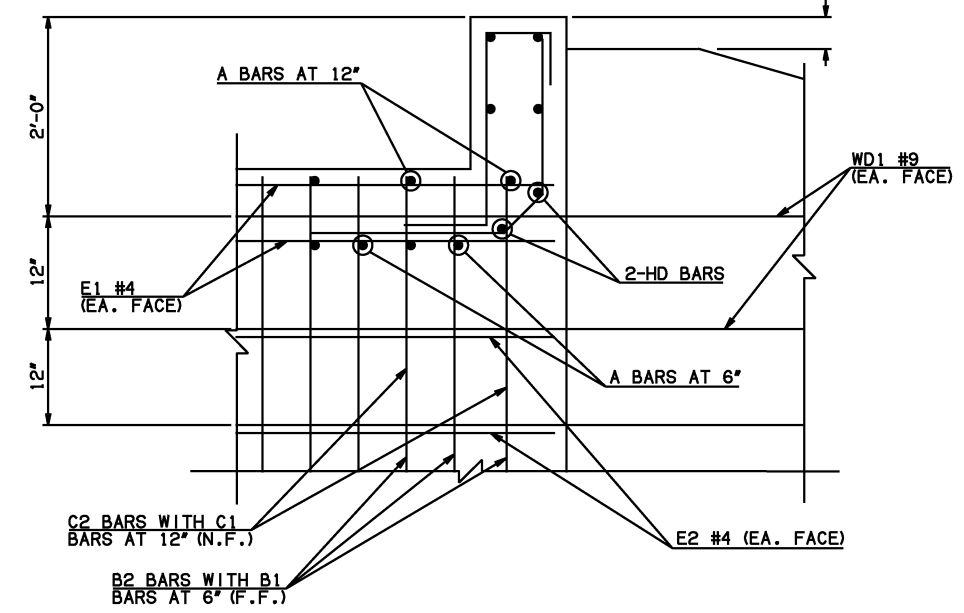


DESCRIPTION	REVISIONS	DATE

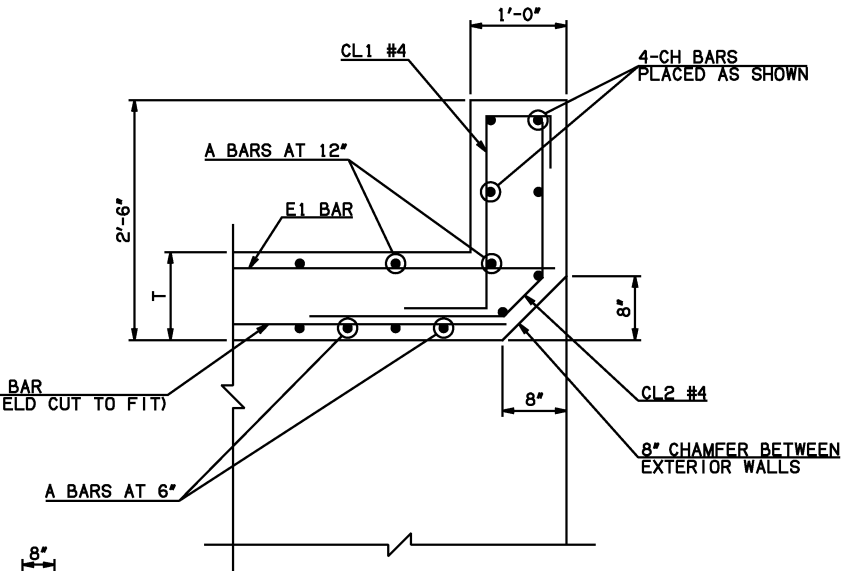


NOTE: F.F. = FAR FACE  
N.F. = NEAR FACE

WING ELEVATION



③ HEADWALL DETAIL AT EXTERIOR WALL

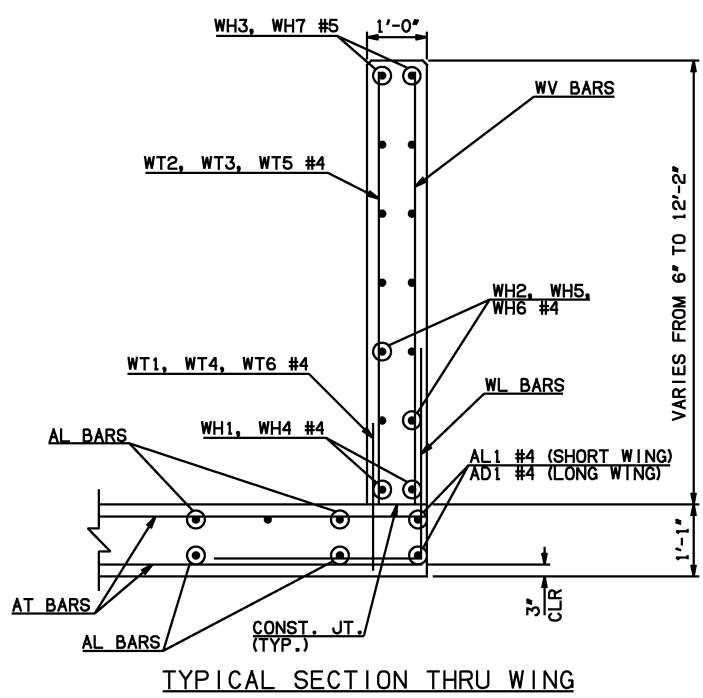


③ HEADWALL DETAIL AT MIDSPAN

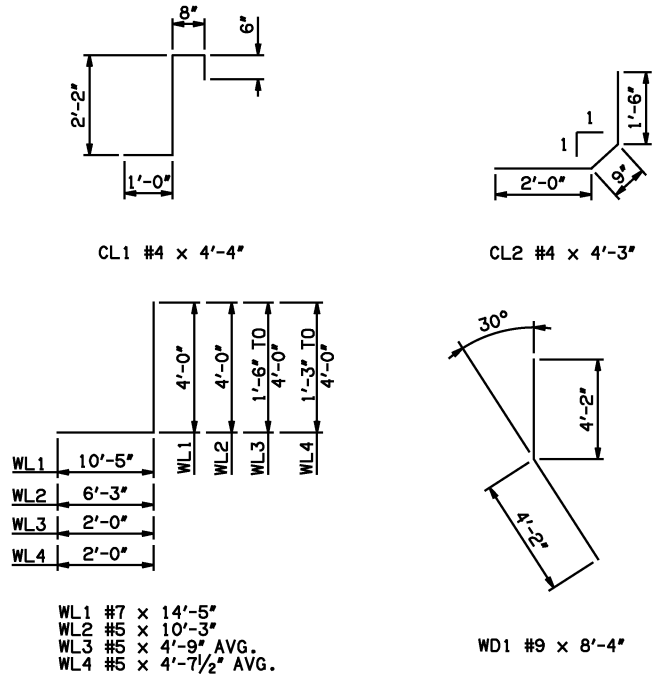
NOTES:  
① INCLUDES 2'-6" LAP  
② QUANTITY SHOWN REPRESENTS TWO SETS.  
③ FOR FURTHER INFORMATION REGARDING END SECTION BARS A, B, C, E1, AND E2, REFER TO RCB CULVERT - BARREL DETAILS.

WINGWALL BAR LIST  
(LONG AND SHORT WING INCLUDED)

MARK	SIZE	QTY.	FORM	LENGTH	REMARKS
WD1	#9	46	BNT	8'-4"	
WH1	#4	2	STR	34'-4"	
WH2	#4	22	STR	17'-7 1/2" AVG.	3'-3" TO 32'-0"
WH3	#5	2	STR	35'-3"	
WH4	#4	2	STR	71'-4"	
WH5	#4	2	STR	66'-7"	
WH6	#4	20	STR	32'-0" AVG.	5'-9" TO 58'-3"
WH7	#5	2	STR	71'-3"	
WL1	#7	50	BNT	14'-5"	
WL2	#5	81	BNT	10'-3"	
WL3	#5	8	BNT	4'-9" AVG.	3'-6" TO 6'-0"
WL4	#5	17	BNT	4'-7 1/2" AVG.	3'-3" TO 6'-0"
WT1	#4	81	STR	2'-10"	
WT2	#4	5	STR	12'-0"	
WT3	#4	25	STR	7'-8" AVG.	3'-6" TO 11'-10"
WT4	#4	8	STR	2'-9" AVG.	1'-6" TO 4'-0"
WT5	#4	51	STR	7'-7 1/2" AVG.	3'-4" TO 11'-11"
WT6	#4	17	STR	2'-7 1/2" AVG.	1'-3" TO 4'-0"
WV1	#5	4	STR	12'-0"	
WV2	#5	15	STR	10'-7 1/2" AVG.	9'-5" TO 11'-10"
WV3	#5	17	STR	6'-3 1/2" AVG.	3'-6" TO 9'-1"
WV4	#5	31	STR	10'-7 1/2" AVG.	9'-4" TO 11'-11"
WV5	#5	35	STR	6'-3"	3'-4" TO 9'-2"
U1	#4	2	BNT	3'-0"	



TYPICAL SECTION THRU WING



WL1 #7 x 14'-5"  
WL2 #5 x 10'-3"  
WL3 #5 x 4'-9" AVG.  
WL4 #5 x 4'-7 1/2" AVG.

HEADWALL BAR LIST

MARK	FORM	ONE HEADWALL SHOWN				14' SPAN				16' SPAN				18' SPAN				20' SPAN						
		SIZE	QTY.	LENGTH	REMARKS	SIZE	QTY.	LENGTH	REMARKS	SIZE	QTY.	LENGTH	REMARKS	SIZE	QTY.	LENGTH	REMARKS	SIZE	QTY.	LENGTH	REMARKS			
CH	STR	#4	4	14'-1"		#4	4	16'-4"		#4	4	18'-10"		#5	4	21'-4"		#5	4	23'-10"		#5	4	26'-2"
CL1	BNT	#4	14	4'-4"		#4	17	4'-4"		#4	19	4'-4"		#4	22	4'-4"		#4	24	4'-4"		#4	26	4'-4"
CL2	BNT	#4	14	4'-3"		#4	17	4'-3"		#4	19	4'-3"		#4	22	4'-3"		#4	24	4'-3"		#4	26	4'-3"
HD	STR	#8	2	14'-1"		#8	2	16'-4"		#8	2	18'-10"		#9	2	21'-4"		#9	2	23'-10"		#9	2	26'-2"

APPROVED BY BRIDGE ENGINEER *Scott J. Smith* DATE 4/2/10

**OKLAHOMA DEPT. OF TRANSPORTATION**  
**BRIDGE STANDARD (ENGLISH)**  
 RCB CULVERTS - END SECTION DETAILS  
 SINGLE CELL - 10'-0" HEIGHT - 30°  
 SHEET NO. 3 OF 3

2009 SPECIFICATIONS | RCB-E1-H10-30-3 | 01E | B-686E