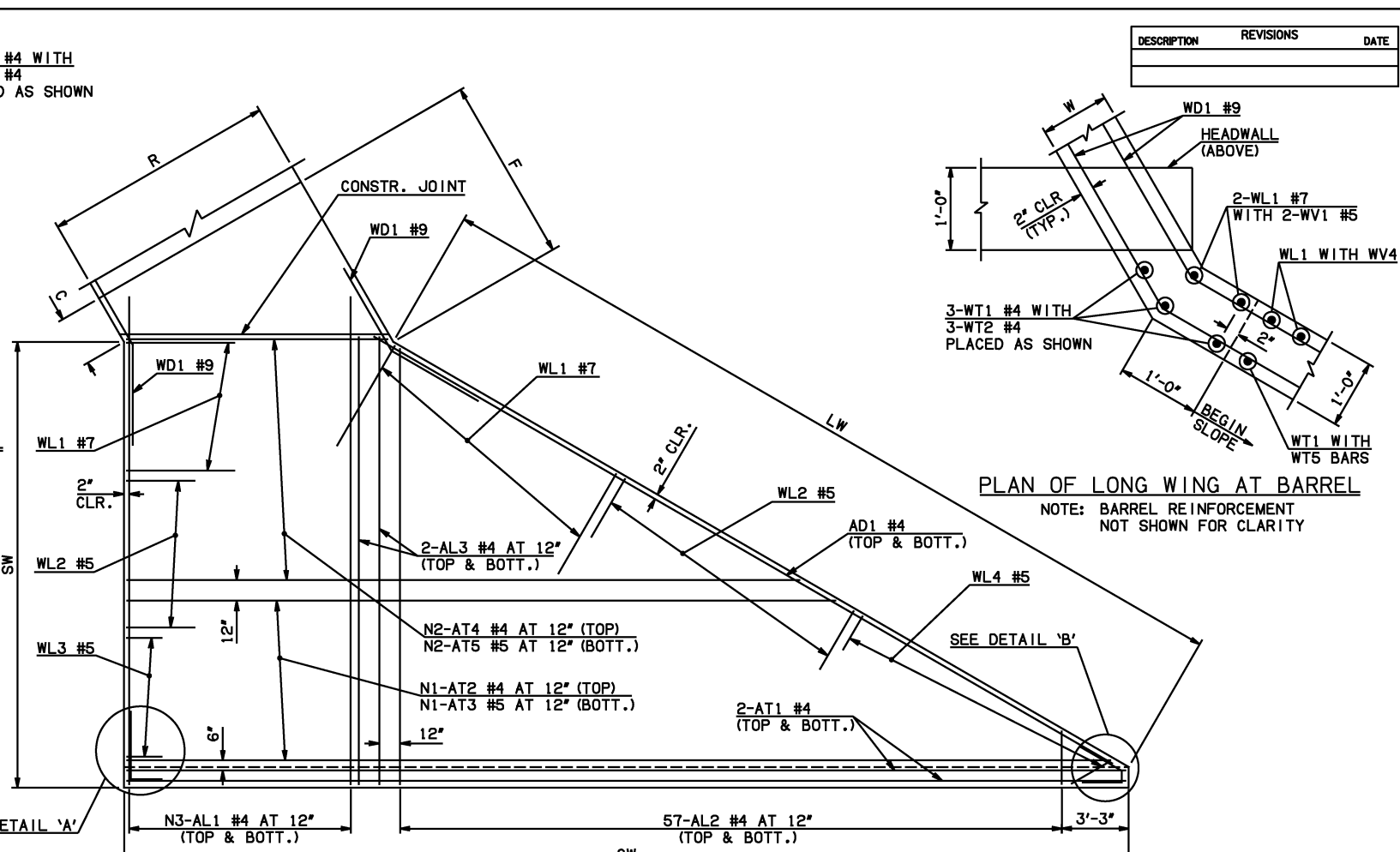
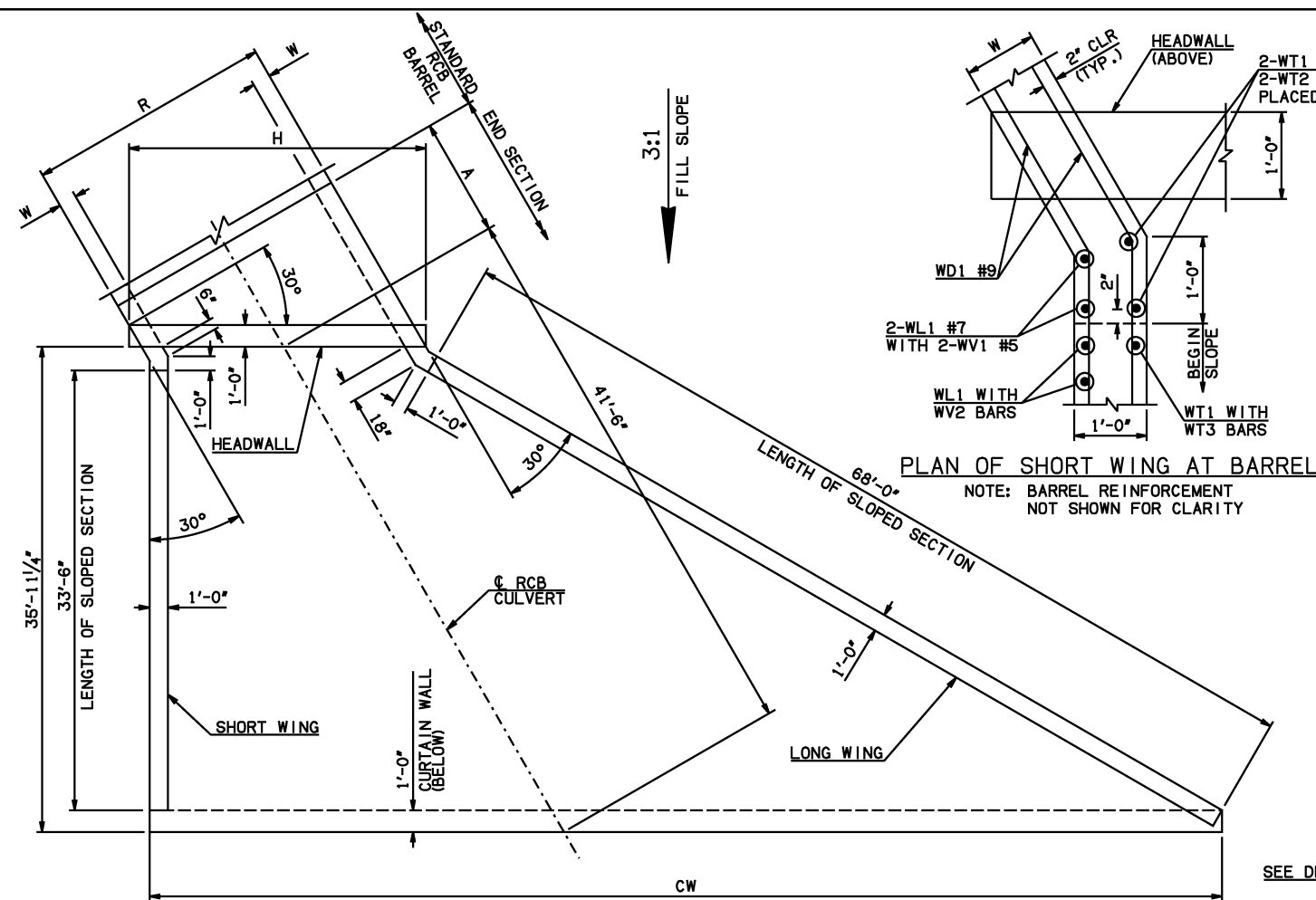


DESCRIPTION	REVISIONS	DATE



NOTE: SEE END SECTION DETAILS SHEET NO. 2 OF 3 FOR VARIABLE REINFORCING QUANTITIES.

END SECTION VARIABLE DIMENSIONS

SPAN	W	A	B	C	CW	D	E	F	G	H	LW	R	SW
10'	12"	6'-0"	2'-6 1/2"	3'-4 1/4"	73'-3 3/4"	3'-7 1/4"	9'-5 1/2"	10'-1 1/2"	10'-4 3/4"	14'-5 1/4"	68'-8 3/4"	12'-0"	35'-2 3/4"
12'	12"	7'-0"	2'-11 1/2"	3'-9 1/4"	75'-7 1/4"	4'-0 1/2"	11'-0 1/2"	11'-8 1/4"	11'-11 1/2"	16'-9"	68'-8 3/4"	14'-0"	35'-2 3/4"
14'	13"	7'-0"	2'-4"	3'-4"	77'-11"	3'-5 1/2"	11'-8"	12'-5"	12'-6 1/2"	19'-3"	68'-6 3/4"	16'-2"	35'-0 3/4"
16'	14"	8'-0"	2'-8 1/2"	3'-10 3/4"	80'-2 3/4"	3'-10 1/2"	13'-3 1/2"	14'-1 1/2"	14'-1 1/2"	21'-9"	68'-4 3/4"	18'-4"	34'-10 3/4"
18'	15"	8'-0"	2'-1"	3'-5 3/4"	82'-6 1/2"	3'-3 3/4"	13'-11"	14'-10 1/4"	14'-8 1/4"	24'-3"	68'-2 3/4"	20'-6"	34'-8 3/4"
20'	15"	9'-0"	2'-6"	3'-10 3/4"	84'-10 1/4"	3'-8 3/4"	15'-6"	16'-5 1/4"	16'-3 1/4"	26'-6 3/4"	68'-2 3/4"	22'-6"	34'-8 3/4"

APRON BAR LIST

ONE APRON SHOWN

MARK	SIZE	FORM	10' SPAN		12' SPAN		14' SPAN		16' SPAN		18' SPAN		20' SPAN				
			QTY.	LENGTH	REMARKS	QTY.	LENGTH	REMARKS	QTY.	LENGTH	REMARKS	QTY.	LENGTH	REMARKS	QTY.	LENGTH	REMARKS
AC1	#4	BNT	2	3'-8"		2	3'-8"		2	3'-8"		2	3'-8"		2	3'-8"	
AC2	#4	BNT	2	3'-8"		2	3'-8"		2	3'-8"		2	3'-8"		2	3'-8"	
AD1	#4	STR	2	72'-0"		2	72'-0"		2	72'-0"		2	72'-0"		2	72'-0"	
AL1	#4	STR	24	37'-9"		30	37'-9"		34	37'-9"		44	37'-9"		48	37'-9"	
AL2	#4	STR	114	18'-8" AVG.	2'-6" TO 34'-10"	114	18'-8" AVG.	2'-6" TO 34'-10"	114	18'-8" AVG.	2'-6" TO 34'-10"	114	18'-8" AVG.	2'-6" TO 34'-10"	114	18'-8" AVG.	2'-6" TO 34'-10"
AL3	#4	STR	4	35'-9"		4	35'-9"		4	35'-9"		4	35'-9"		4	35'-9"	
AT1	#4	STR	4	75'-5"		4	77'-9"		4	80'-1"		4	84'-8"		4	87'-0"	
AT2	#4	STR	8	68'-7 1/2" AVG.	62'-7" TO 74'-8"	9	70'-1" AVG.	63'-2" TO 77'-0"	10	71'-6 1/2" AVG.	63'-9" TO 79'-4"	12	72'-1" AVG.	62'-7" TO 81'-7"	13	73'-6 1/2" AVG.	63'-2" TO 83'-11"
AT3	#5	STR	8	68'-7 1/2" AVG.	62'-7" TO 74'-8"	9	70'-1" AVG.	63'-2" TO 77'-0"	10	71'-6 1/2" AVG.	63'-9" TO 79'-4"	12	72'-1" AVG.	62'-7" TO 81'-7"	13	73'-6 1/2" AVG.	63'-2" TO 83'-11"
AT4	#4	STR	27	35'-10" AVG.	13'-4" TO 58'-4"	26	37'-3" AVG.	15'-7" TO 58'-11"	25	38'-8 1/2" AVG.	17'-11" TO 59'-6"	23	39'-3 1/2" AVG.	20'-3" TO 58'-4"	22	40'-8 1/2" AVG.	22'-6" TO 58'-11"
AT5	#5	STR	27	35'-10" AVG.	13'-4" TO 58'-4"	26	37'-3" AVG.	15'-7" TO 58'-11"	25	38'-8 1/2" AVG.	17'-11" TO 59'-6"	23	39'-3 1/2" AVG.	20'-3" TO 58'-4"	22	40'-8 1/2" AVG.	22'-6" TO 58'-11"

APPROVED BY BRIDGE ENGINEER *Scott J. Smith* DATE 4/2/10

OKLAHOMA DEPT. OF TRANSPORTATION
BRIDGE STANDARD (ENGLISH)
 RCB CULVERTS - END SECTION DETAILS
 SINGLE CELL - 10'-0" HEIGHT - 30°
 SHEET NO. 1 OF 3

2009 SPECIFICATIONS | RCB-E1-H10-30-1 | 01E | B-684E

① INCLUDES 2'-6" LAP
 ② QUANTITY SHOWN REPRESENTS TWO SETS.