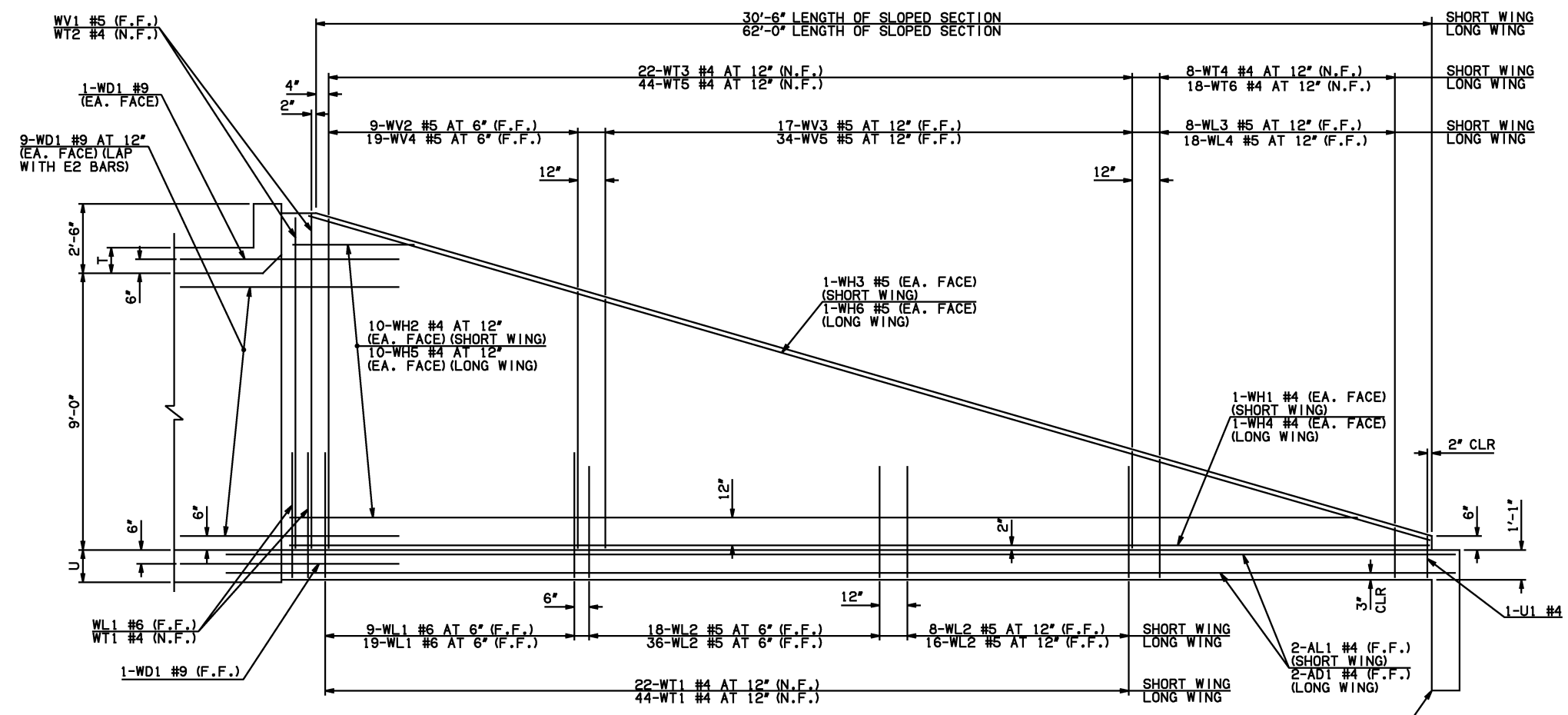
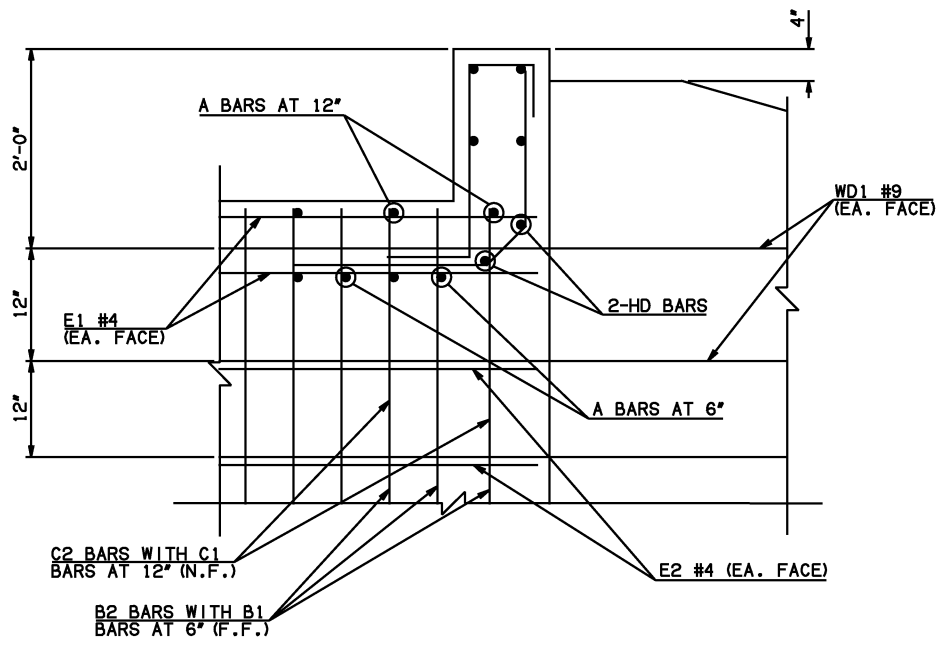


DESCRIPTION	REVISIONS	DATE

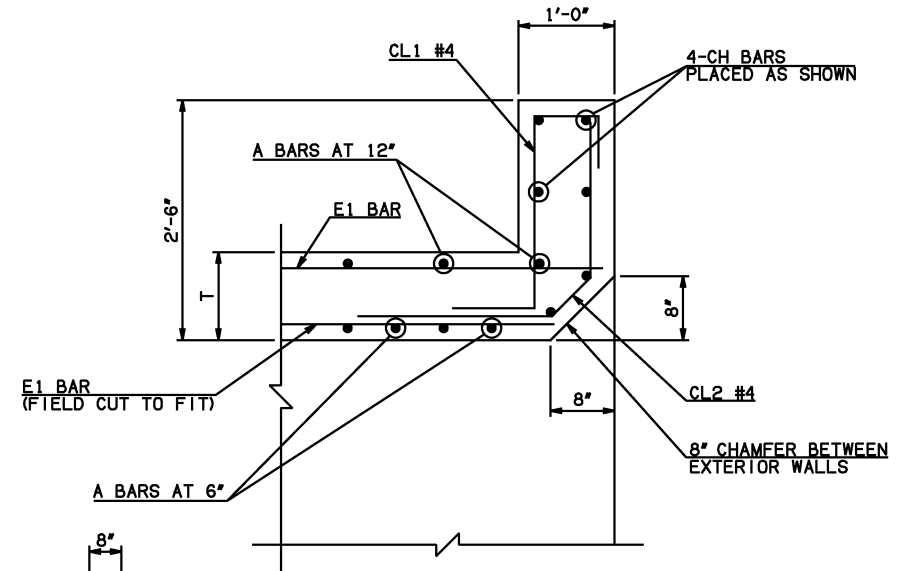


NOTE: F.F. = FAR FACE
N.F. = NEAR FACE

WING ELEVATION



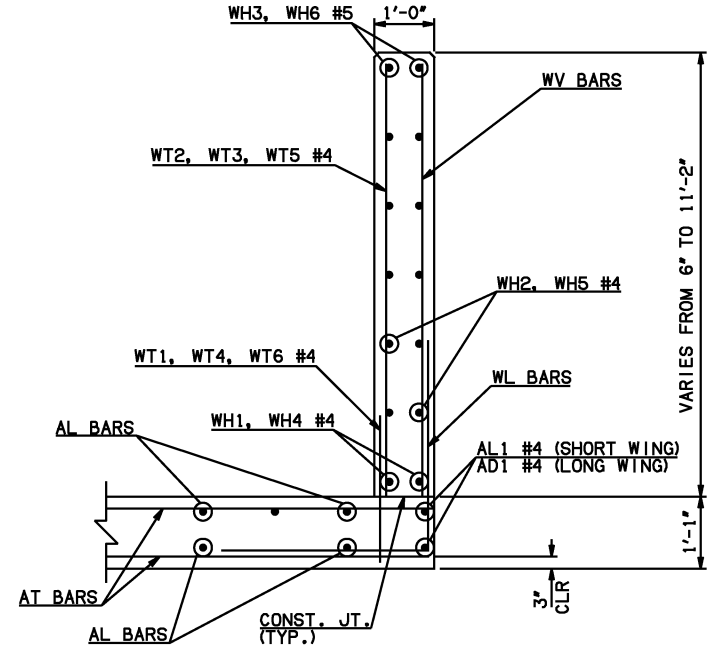
③ HEADWALL DETAIL AT EXTERIOR WALL



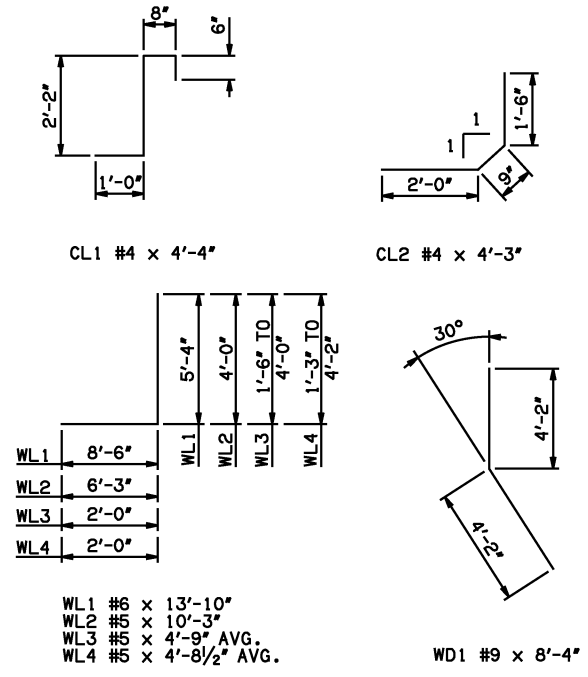
③ HEADWALL DETAIL AT MIDSPAN

DIMENSION SHOWN NORMAL TO HEADWALL
NOTES:
① INCLUDES 2'-6\"/>

WINGWALL BAR LIST (LONG AND SHORT WING INCLUDED)					
MARK	SIZE	QTY.	FORM	LENGTH	REMARKS
WD1	#9	42	BNT	8'-4"	
WH1	#4	2	STR	31'-4"	
WH2	#4	20	STR	16'-2 1/2" AVG.	3'-4" TO 29'-1"
WH3	#5	2	STR	32'-1"	
WH4	#4	2	STR	65'-4"	
WH5	#4	20	STR	31'-11" AVG.	5'-9" TO 58'-1"
WH6	#5	2	STR	65'-2"	
WL1	#6	32	BNT	13'-10"	
WL2	#5	78	BNT	10'-3"	
WL3	#5	8	BNT	4'-9" AVG.	3'-6" TO 6'-0"
WL4	#5	18	BNT	4'-8 1/2" AVG.	3'-3" TO 6'-2"
WT1	#4	71	STR	2'-10"	
WT2	#4	5	STR	11'-0"	
WT3	#4	22	STR	7'-2" AVG.	3'-6" TO 10'-10"
WT4	#4	8	STR	2'-9" AVG.	1'-6" TO 4'-0"
WT5	#4	44	STR	7'-2 1/2" AVG.	3'-6" TO 10'-11"
WT6	#4	18	STR	2'-8 1/2" AVG.	1'-3" TO 4'-2"
WV1	#5	4	STR	11'-0"	
WV2	#5	9	STR	10'-1 1/2" AVG.	9'-5" TO 10'-10"
WV3	#5	17	STR	6'-3 1/2" AVG.	3'-6" TO 9'-1"
WV4	#5	19	STR	10'-1 1/2" AVG.	9'-4" TO 10'-11"
WV5	#5	34	STR	6'-4" AVG.	3'-6" TO 9'-2"
U1	#4	2	BNT	3'-0"	



TYPICAL SECTION THRU WING



WL1 #6 x 13'-10"
WL2 #5 x 10'-3"
WL3 #5 x 4'-9" AVG.
WL4 #5 x 4'-8 1/2" AVG.

WD1 #9 x 8'-4"

U1 #4 x 3'-0"

HEADWALL BAR LIST																			
ONE HEADWALL SHOWN																			
MARK	FORM	10' SPAN			12' SPAN			14' SPAN			16' SPAN			18' SPAN			20' SPAN		
		SIZE	QTY.	LENGTH	SIZE	QTY.	LENGTH	SIZE	QTY.	LENGTH	SIZE	QTY.	LENGTH	SIZE	QTY.	LENGTH	SIZE	QTY.	LENGTH
CH	STR	#4	4	14'-1"	#4	4	16'-4"	#4	4	18'-10"	#5	4	21'-4"	#5	4	23'-10"	#5	4	26'-2"
CL1	BNT	#4	14	4'-4"	#4	17	4'-4"	#4	19	4'-4"	#4	22	4'-4"	#4	24	4'-4"	#4	26	4'-4"
CL2	BNT	#4	14	4'-3"	#4	17	4'-3"	#4	19	4'-3"	#4	22	4'-3"	#4	24	4'-3"	#4	26	4'-3"
HD	STR	#8	2	14'-1"	#8	2	16'-4"	#8	2	18'-10"	#9	2	21'-4"	#9	2	23'-10"	#9	2	26'-2"

APPROVED BY BRIDGE ENGINEER *Scott J. Smith* DATE 4/2/10

OKLAHOMA DEPT. OF TRANSPORTATION
BRIDGE STANDARD (ENGLISH)
RCB CULVERTS - END SECTION DETAILS
SINGLE CELL - 9'-0" HEIGHT - 30°
SHEET NO. 3 OF 3

2009 SPECIFICATIONS | RCB-E1-H9-30-3 | 01E | B-683E