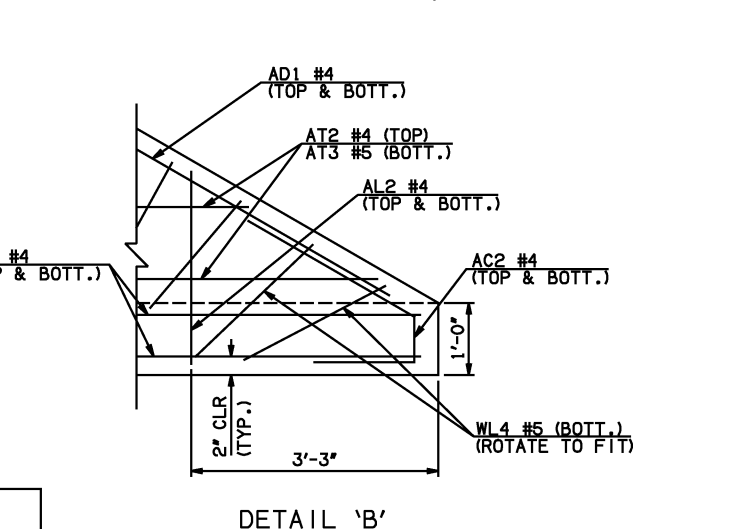
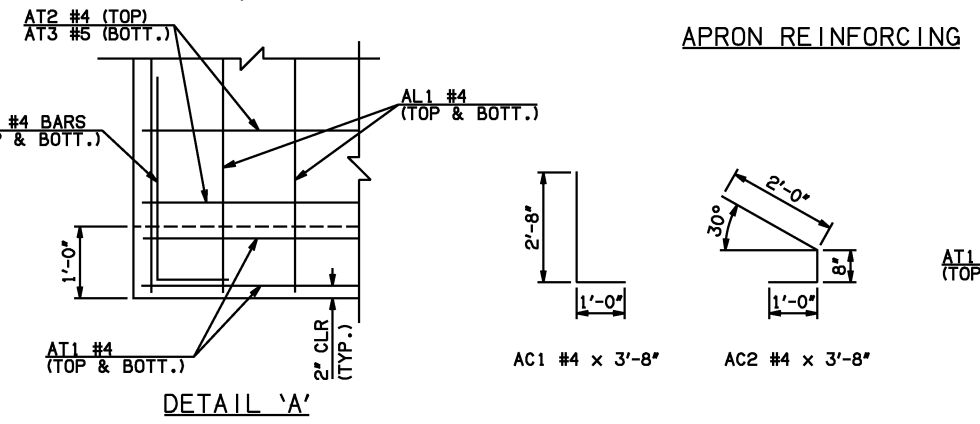
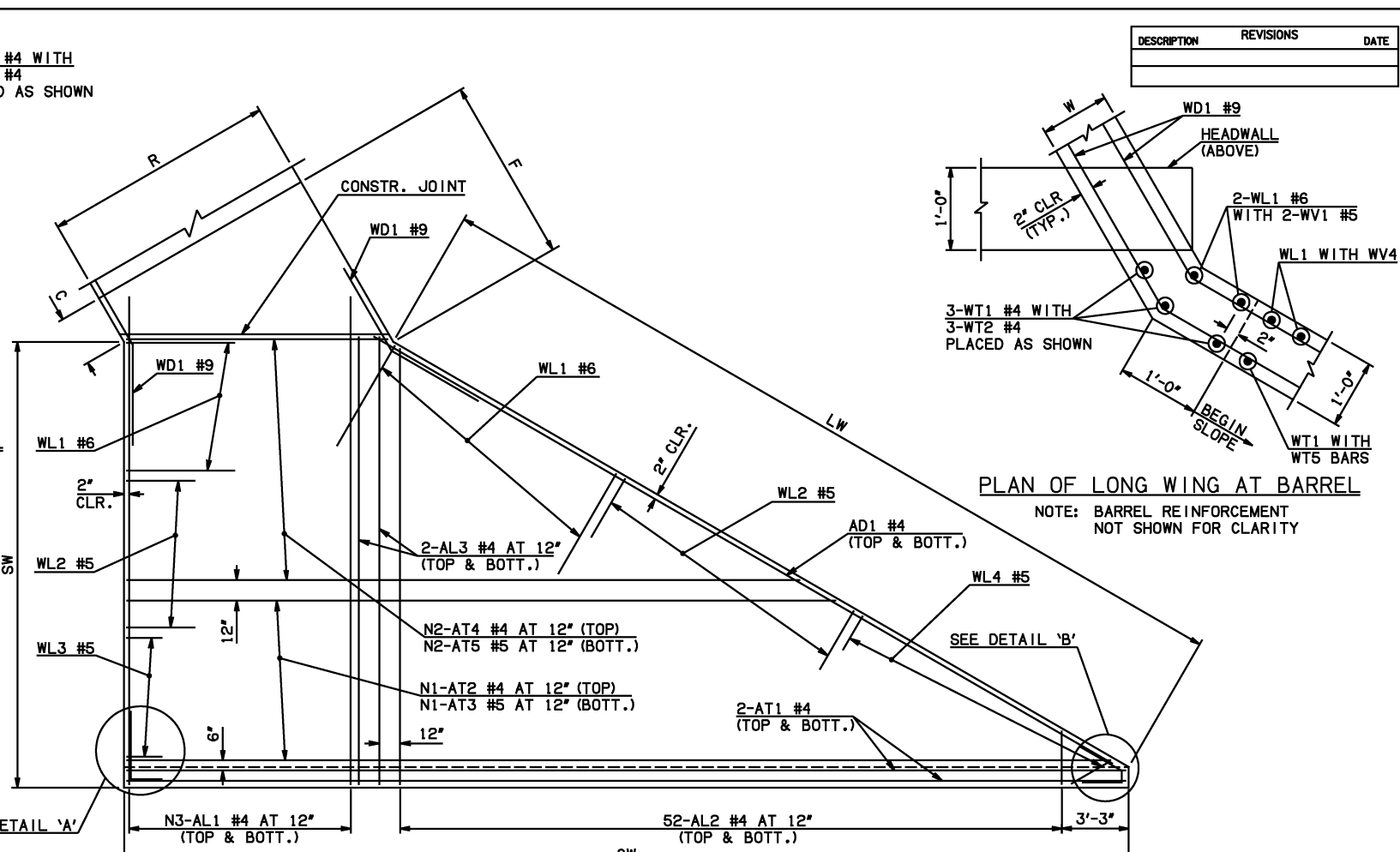
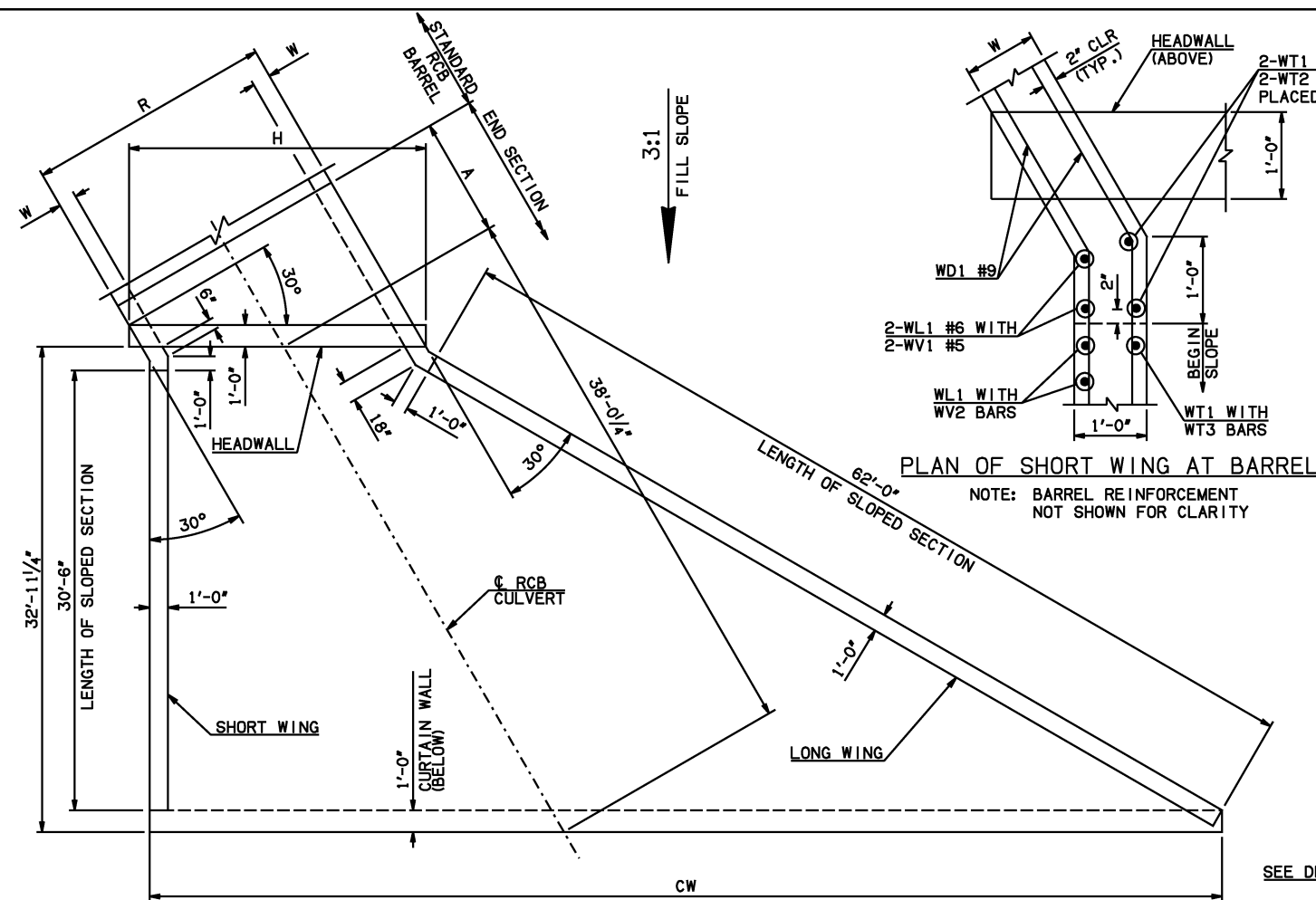


DESCRIPTION	REVISIONS	DATE



END SECTION VARIABLE DIMENSIONS													
SPAN	W	A	B	C	CW	D	E	F	G	H	LW	R	SW
10'	12"	6'-0"	2'-6 1/2"	3'-4 1/4"	68'-1 1/4"	3'-7 1/4"	9'-5 1/2"	10'-1 1/2"	10'-4 3/4"	14'-5 1/4"	62'-8 3/4"	12'-0"	32'-2 3/4"
12'	12"	7'-0"	2'-11 1/2"	3'-9 1/4"	70'-5"	4'-0 1/2"	11'-0 1/2"	11'-8 1/4"	11'-11 1/2"	16'-9"	62'-8 3/4"	14'-0"	32'-2 3/4"
14'	13"	7'-0"	2'-4"	3'-4"	72'-8 3/4"	3'-5 1/2"	11'-8"	12'-5"	12'-6 1/2"	19'-3"	62'-6 3/4"	16'-2"	32'-0 3/4"
16'	14"	8'-0"	2'-8 1/2"	3'-10 3/4"	75'-0 1/2"	3'-10 1/2"	13'-3 1/2"	14'-1 1/2"	14'-1 1/2"	21'-9"	62'-4 3/4"	18'-4"	31'-10 3/4"
18'	15"	8'-0"	2'-1"	3'-5 3/4"	77'-4 1/4"	3'-3 3/4"	13'-11"	14'-10 1/4"	14'-8 1/4"	24'-3"	62'-2 3/4"	20'-6"	31'-8 3/4"
20'	15"	9'-0"	2'-6"	3'-10 3/4"	79'-7 3/4"	3'-8 3/4"	15'-6"	16'-5 1/4"	16'-3 1/4"	26'-6 3/4"	62'-2 3/4"	22'-6"	31'-8 3/4"

APRON BAR LIST																					
ONE APRON SHOWN																					
MARK	SIZE	FORM	10' SPAN			12' SPAN			14' SPAN			16' SPAN			18' SPAN			20' SPAN			
			QTY.	LENGTH	REMARKS	QTY.	LENGTH	REMARKS	QTY.	LENGTH	REMARKS	QTY.	LENGTH	REMARKS	QTY.	LENGTH	REMARKS	QTY.	LENGTH	REMARKS	
	AC1	#4	BNT	2	3'-8"		2	3'-8"		2	3'-8"		2	3'-8"		2	3'-8"		2	3'-8"	
	AC2	#4	BNT	2	3'-8"		2	3'-8"		2	3'-8"		2	3'-8"		2	3'-8"		2	3'-8"	
①	AD1	#4	STR	2	66'-0"		2	66'-0"		2	66'-0"		2	66'-0"		2	66'-0"		2	66'-0"	
	AL1	#4	STR	24	34'-9"		30	34'-9"		34	34'-9"		40	34'-9"		44	34'-9"		48	34'-9"	
②	AL2	#4	STR	104	17'-2 1/2" AVG.	2'-6" TO 31'-11"	104	17'-2 1/2" AVG.	2'-6" TO 31'-11"	104	17'-2 1/2" AVG.	2'-6" TO 31'-11"	104	17'-2 1/2" AVG.	2'-6" TO 31'-11"	104	17'-2 1/2" AVG.	2'-6" TO 31'-11"	104	17'-2 1/2" AVG.	2'-6" TO 31'-11"
	AL3	#4	STR	4	32'-9"		4	32'-9"		4	32'-9"		4	32'-9"		4	32'-9"		4	32'-9"	
①	AT1	#4	STR	4	70'-3"		4	72'-6"		4	74'-10"		4	77'-2"		4	79'-6"		4	81'-9"	
①	AT2	#4	STR	5	66'-0 1/2" AVG.	62'-7" TO 69'-6"	6	67'-6" AVG.	63'-2" TO 71'-10"	7	68'-11" AVG.	63'-9" TO 74'-1"	9	69'-6" AVG.	62'-7" TO 76'-5"	10	70'-11 1/2" AVG.	63'-2" TO 78'-9"	11	72'-4 1/2" AVG.	63'-9" TO 81'-0"
①	AT3	#5	STR	5	66'-0 1/2" AVG.	62'-7" TO 69'-6"	6	67'-6" AVG.	63'-2" TO 71'-10"	7	68'-11" AVG.	63'-9" TO 74'-1"	9	69'-6" AVG.	62'-7" TO 76'-5"	10	70'-11 1/2" AVG.	63'-2" TO 78'-9"	11	72'-4 1/2" AVG.	63'-9" TO 81'-0"
	AT4	#4	STR	27	35'-10" AVG.	13'-4" TO 58'-4"	26	37'-3" AVG.	15'-7" TO 58'-11"	25	38'-8 1/2" AVG.	17'-11" TO 59'-6"	23	39'-3 1/2" AVG.	20'-3" TO 58'-4"	22	40'-8 1/2" AVG.	22'-6" TO 58'-11"	21	42'-2" AVG.	24'-10" TO 59'-6"
	AT5	#5	STR	27	35'-10" AVG.	13'-4" TO 58'-4"	26	37'-3" AVG.	15'-7" TO 58'-11"	25	38'-8 1/2" AVG.	17'-11" TO 59'-6"	23	39'-3 1/2" AVG.	20'-3" TO 58'-4"	22	40'-8 1/2" AVG.	22'-6" TO 58'-11"	21	42'-2" AVG.	24'-10" TO 59'-6"

- ① INCLUDES 2'-6" LAP
- ② QUANTITY SHOWN REPRESENTS TWO SETS.

APPROVED BY BRIDGE ENGINEER *Scott Luedtke* DATE 4/2/10

**OKLAHOMA DEPT. OF TRANSPORTATION**  
**BRIDGE STANDARD (ENGLISH)**

RCB CULVERTS - END SECTION DETAILS  
 SINGLE CELL - 9'-0" HEIGHT - 30°  
 SHEET NO. 1 OF 3

2009 SPECIFICATIONS | RCB-E1-H9-30-1 | 01E | B-681E