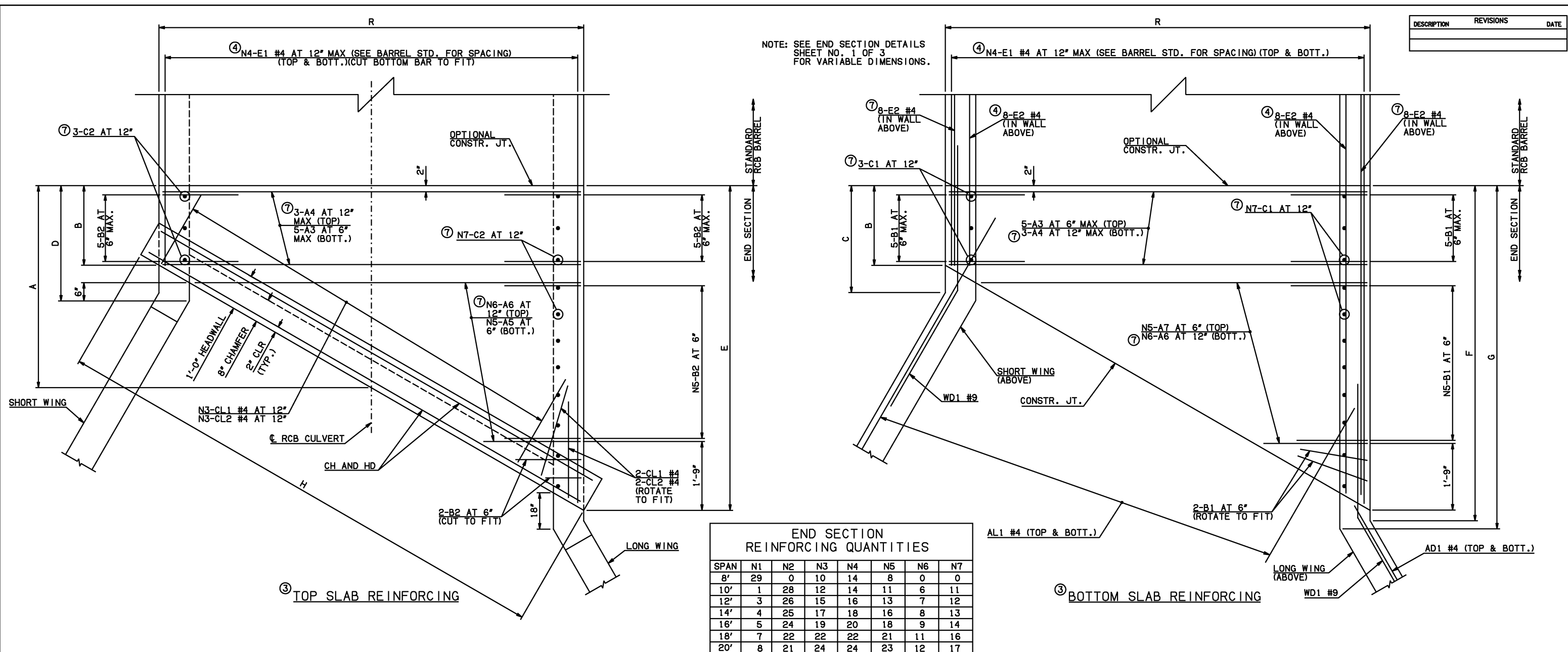


| DESCRIPTION | REVISIONS | DATE |
|-------------|-----------|------|
| | | |



NOTE: SEE END SECTION DETAILS SHEET NO. 1 OF 3 FOR VARIABLE DIMENSIONS.

END SECTION REINFORCING QUANTITIES

| SPAN | N1 | N2 | N3 | N4 | N5 | N6 | N7 |
|------|----|----|----|----|----|----|----|
| 8' | 29 | 0 | 10 | 14 | 8 | 0 | 0 |
| 10' | 1 | 28 | 12 | 14 | 11 | 6 | 11 |
| 12' | 3 | 26 | 15 | 16 | 13 | 7 | 12 |
| 14' | 4 | 25 | 17 | 18 | 16 | 8 | 13 |
| 16' | 5 | 24 | 19 | 20 | 18 | 9 | 14 |
| 18' | 7 | 22 | 22 | 22 | 21 | 11 | 16 |
| 20' | 8 | 21 | 24 | 24 | 23 | 12 | 17 |

END CONNECTION BAR LIST

ONE END CONNECTION SHOWN

| MARK | FORM | 8' SPAN | | | | 10' SPAN | | | | 12' SPAN | | | | 14' SPAN | | | | 16' SPAN | | | | 18' SPAN | | | | 20' SPAN | | | |
|------|------|---------|------|----------------|-----------------|----------|------|----------------|-----------------|----------|------|----------------|-------------------|----------|------|----------------|-------------------|----------|------|-----------------|------------------|----------|------|-------------|-------------------|----------|------|------------------|------------------|
| | | SIZE | QTY. | LENGTH | REMARKS | SIZE | QTY. | LENGTH | REMARKS | SIZE | QTY. | LENGTH | REMARKS | SIZE | QTY. | LENGTH | REMARKS | SIZE | QTY. | LENGTH | REMARKS | SIZE | QTY. | LENGTH | REMARKS | SIZE | QTY. | LENGTH | REMARKS |
| A3 | STR | #7 | 10 | 9'-4" | | #7 | 10 | 11'-8" | | #7 | 10 | 13'-8" | | #7 | 10 | 15'-10" | | #8 | 10 | 18'-0" | | #8 | 10 | 20'-2" | | #9 | 10 | 22'-2" | |
| A4 | STR | | 0 | | | #4 | 6 | 11'-8" | | #4 | 6 | 13'-8" | | #4 | 6 | 15'-10" | | #4 | 6 | 18'-0" | | #5 | 6 | 20'-2" | | #5 | 6 | 22'-2" | |
| A5 | STR | #7 | 8 | 4'-4 1/2" AVG. | 1'-4" TO 7'-5" | #7 | 11 | 5'-8" AVG. | 1'-4" TO 10'-0" | #7 | 13 | 6'-6 1/2" AVG. | 1'-4" TO 11'-9" | #7 | 16 | 7'-10" AVG. | 1'-4" TO 14'-4" | #8 | 18 | 8'-8 1/2" AVG. | 1'-4" TO 16'-1" | #8 | 21 | 10'-0" AVG. | 1'-4" TO 18'-8" | #9 | 23 | 10'-10 1/2" AVG. | 1'-4" TO 20'-5" |
| A6 | STR | | 0 | | | #4 | 12 | 6'-10" AVG. | 2'-6" TO 11'-2" | #4 | 14 | 7'-8 1/2" AVG. | 2'-6" TO 12'-11" | #4 | 16 | 8'-6 1/2" AVG. | 2'-6" TO 14'-7" | #4 | 18 | 9'-5" AVG. | 2'-6" TO 16'-4" | #5 | 22 | 11'-2" AVG. | 2'-6" TO 19'-10" | #5 | 24 | 12'-0 1/2" AVG. | 2'-6" TO 21'-7" |
| A7 | STR | #7 | 8 | 5'-6 1/2" AVG. | 2'-6" TO 8'-7" | #7 | 11 | 6'-10" AVG. | 2'-6" TO 11'-2" | #7 | 13 | 7'-8 1/2" AVG. | 2'-6" TO 12'-11" | #7 | 16 | 9'-0" AVG. | 2'-6" TO 15'-6" | #8 | 18 | 9'-10 1/2" AVG. | 2'-6" TO 17'-3" | #8 | 21 | 11'-2" AVG. | 2'-6" TO 19'-10" | #9 | 23 | 12'-0 1/2" AVG. | 2'-6" TO 21'-7" |
| B1 | BNT | #5 | 20 | 3'-3" | | #6 | 23 | 5'-3" | | #6 | 25 | 5'-8" | | #6 | 28 | 6'-3" | | #6 | 30 | 6'-8" | | #7 | 33 | 7'-7" | | #7 | 35 | 7'-6" | |
| B2 | BNT | #5 | 20 | 9'-7" | | #6 | 23 | 11'-3" | | #6 | 25 | 11'-7" | | #6 | 28 | 12'-2" | | #6 | 30 | 12'-7" | | #7 | 33 | 12'-9" | | #7 | 35 | 12'-8" | |
| C1 | STR | | 0 | | | #4 | 14 | 2'-2" | | #4 | 15 | 2'-3" | | #4 | 16 | 2'-4" | | #4 | 17 | 2'-7" | | #4 | 19 | 2'-7" | | #4 | 20 | 2'-8" | |
| C2 | STR | | 0 | | | #4 | 14 | 8'-10" | | #4 | 15 | 8'-11" | | #4 | 16 | 9'-0" | | #4 | 17 | 9'-3" | | #4 | 19 | 9'-3" | | #4 | 20 | 9'-4" | |
| E1 | STR | #4 | 28 | 4'-9 1/2" AVG. | 2'-1" TO 7'-6" | #4 | 56 | 5'-9 1/2" AVG. | 2'-5" TO 9'-2" | #4 | 64 | 6'-9 1/2" AVG. | 2'-10" TO 10'-9" | #4 | 72 | 6'-9" AVG. | 2'-2" TO 11'-4" | #4 | 80 | 7'-9 1/2" AVG. | 2'-7" TO 13'-0" | #4 | 88 | 7'-9" AVG. | 1'-11" TO 13'-7" | #4 | 96 | 8'-9" AVG. | 2'-4" TO 15'-2" |
| E2 | STR | #4 | 16 | 4'-7 1/2" AVG. | 2'-1" AND 7'-2" | #4 | 32 | 5'-7" AVG. | 2'-5" AND 8'-9" | #4 | 32 | 6'-7" AVG. | 2'-10" AND 10'-4" | #4 | 32 | 6'-6 1/2" AVG. | 2'-2" AND 10'-11" | #4 | 32 | 7'-6 1/2" AVG. | 2'-7" AND 12'-6" | #4 | 32 | 7'-6" AVG. | 1'-11" AND 13'-1" | #4 | 32 | 8'-6" AVG. | 2'-4" AND 14'-8" |

QUANTITIES

| ITEM | UNIT | 8' SPAN | 10' SPAN | 12' SPAN | 14' SPAN | 16' SPAN | 18' SPAN | 20' SPAN |
|-------------------|------|---------|----------|----------|----------|----------|----------|----------|
| CLASS AA CONCRETE | CY | 61.20 | 67.20 | 73.00 | 78.00 | 87.30 | 92.30 | 101.00 |
| REINFORCING STEEL | LB | 8420.00 | 9570.00 | 10210.00 | 10860.00 | 11920.00 | 13330.00 | 14660.00 |

- NOTES: ② QUANTITY SHOWN REPRESENTS TWO SETS.
 ③ FOR FURTHER INFORMATION REGARDING END SECTION BARS A, B, C, E1, AND E2, REFER TO RCB CULVERT - BARREL DETAILS.
 ④ LENGTHS OF E1 & E2 BARS SHOWN ARE ADDITIONAL LENGTHS REQUIRED FOR THE END SECTION. LAP SPLICES, AS REQUIRED, SHALL BE IN ACCORDANCE WITH RCB BARREL STANDARD NOTES.
 ⑤ FOR SPANS 10' AND LONGER, 4-SETS OF N4-E1 BARS REQUIRED. FOR 8' SPAN, 2-SETS OF N4-E1 BARS REQUIRED.
 ⑥ QUANTITY SHOWN REPRESENTS 2-SETS OF E2 BARS WITH LENGTHS AS SHOWN CORRESPONDING TO SHORT EXTERIOR WALL AND LONG EXTERIOR WALL.
 ⑦ NOT PRESENT IN 8' SPAN.

APPROVED BY BRIDGE ENGINEER *Scott L. Smith* DATE 4/2/10

OKLAHOMA DEPT. OF TRANSPORTATION
BRIDGE STANDARD (ENGLISH)
 RCB CULVERTS - END SECTION DETAILS
 SINGLE CELL - 8'-0" HEIGHT - 30"
 SHEET NO. 2 OF 3

2009 SPECIFICATIONS | RCB-E1-H8-30-2 | 01E | B-679E

NOTE: QUANTITIES ABOVE ARE FOR ONE END SECTION, WHICH IS COMPRISED OF ONE END CONNECTION, ONE HEADWALL, ONE APRON, AND TWO WINGWALLS.