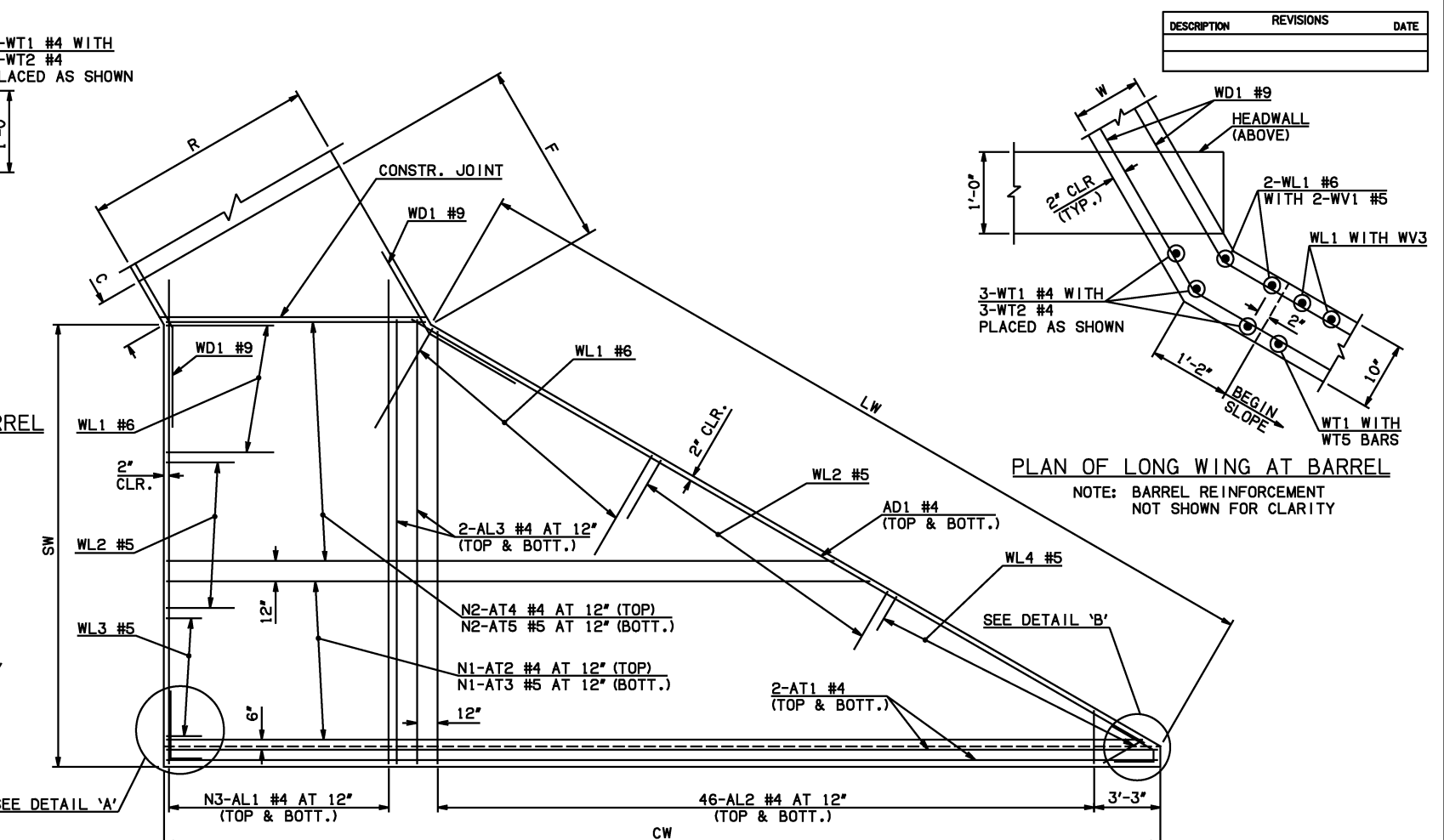


END SECTION PLAN



APRON REINFORCING

APRON BAR LIST

ONE APRON SHOWN

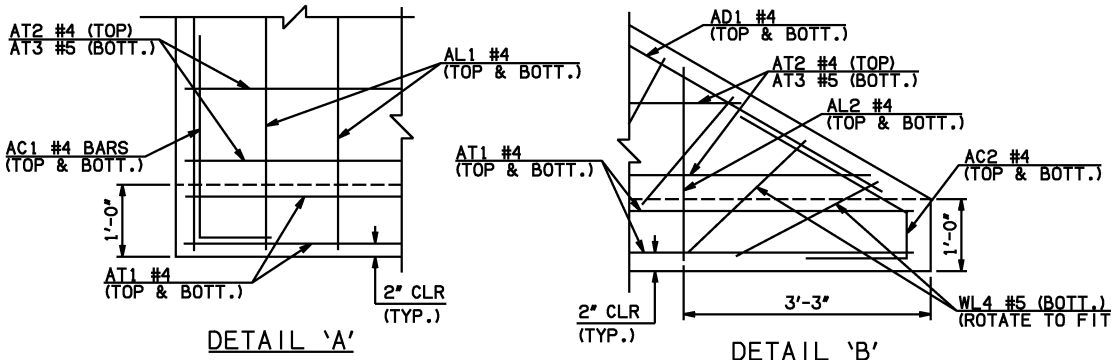
MARK	SIZE	FORM	8' SPAN		10' SPAN		12' SPAN		14' SPAN		16' SPAN		18' SPAN		20' SPAN		
			QTY.	LENGTH	REMARKS	QTY.	LENGTH	REMARKS	QTY.	LENGTH	REMARKS	QTY.	LENGTH	REMARKS	QTY.	LENGTH	REMARKS
AC1	#4	BNT	2	3'-8"		2	3'-8"		2	3'-8"		2	3'-8"		2	3'-8"	
AC2	#4	BNT	2	3'-8"		2	3'-8"		2	3'-8"		2	3'-8"		2	3'-8"	
AD1	#4	STR	2	57'-6"		2	57'-6"		2	57'-6"		2	57'-6"		2	57'-6"	
AL1	#4	STR	20	31'-9"		24	31'-9"		30	31'-9"		38	31'-9"		44	31'-9"	
AL2	#4	STR	92	15'-5 1/2" AVG.	2'-6" TO 28'-5"	92	15'-5 1/2" AVG.	2'-6" TO 28'-5"	92	15'-5 1/2" AVG.	2'-6" TO 28'-5"	92	15'-5 1/2" AVG.	2'-6" TO 28'-5"	92	15'-5 1/2" AVG.	2'-6" TO 28'-5"
AL3	#4	STR	4	29'-9"		4	29'-9"		4	29'-9"		4	29'-9"		4	29'-9"	
AT1	#4	STR	4	59'-9"		4	64'-6" ①		4	66'-10" ①		4	69'-2" ①		4	71'-6" ①	
AT2	#4	STR	29	34'-9" AVG.	10'-6" TO 59'-0"	1	63'-9"		3	64'-4 1/2" AVG.	62'-8" TO 66'-1"	4	65'-10" AVG.	63'-3" TO 68'-5"	5	67'-3" AVG.	63'-9" TO 70'-9"
AT3	#5	STR	29	34'-9" AVG.	10'-6" TO 59'-0"	1	63'-9"		3	64'-4 1/2" AVG.	62'-8" TO 66'-1"	4	65'-10" AVG.	63'-3" TO 68'-5"	5	67'-3" AVG.	63'-9" TO 70'-9"
AT4	#4	STR	0			28	36'-2 1/2" AVG.	12'-10" TO 59'-7"	26	36'-9" AVG.	15'-1" TO 58'-5"	25	38'-2 1/2" AVG.	17'-5" TO 59'-0"	24	39'-8" AVG.	19'-9" TO 59'-7"
AT5	#5	STR	0			28	36'-2 1/2" AVG.	12'-10" TO 59'-7"	26	36'-9" AVG.	15'-1" TO 58'-5"	25	38'-2 1/2" AVG.	17'-5" TO 59'-0"	24	39'-8" AVG.	19'-9" TO 59'-7"

① INCLUDES 2'-6" LAP. NO LAPS REQUIRED FOR 8' SPAN.

NOTE: SEE END SECTION DETAILS SHEET NO. 2 OF 3 FOR VARIABLE REINFORCING QUANTITIES.

END SECTION VARIABLE DIMENSIONS

SPAN	W	A	B	C	CW	D	E	F	G	H	LW	R	SW
8'	10"	5'-0"	2'-2 1/2"	2'-11 1/2"	60'-1 1/4"	3'-2 1/4"	7'-9 1/2"	8'-7"	8'-9 3/4"	11'-8 3/4"	56'-5 3/4"	9'-8"	29'-3 1/4"
10'	12"	6'-0"	2'-6 1/2"	3'-8 1/4"	62'-5"	3'-7 1/4"	9'-5 1/2"	10'-5 1/2"	10'-4 3/4"	14'-5 1/4"	56'-1 3/4"	12'-0"	28'-11 1/4"
12'	12"	7'-0"	2'-11 1/2"	4'-1 1/4"	64'-8 3/4"	4'-0 1/2"	11'-0 1/2"	12'-0 1/4"	11'-11 1/2"	16'-9"	56'-1 3/4"	14'-0"	28'-11 1/4"
14'	13"	7'-0"	2'-4"	3'-8"	67'-0 1/4"	3'-5 1/2"	11'-8"	12'-9"	12'-6 1/2"	19'-3"	55'-11 3/4"	16'-2"	28'-9 1/4"
16'	14"	8'-0"	2'-8 1/2"	4'-2 3/4"	69'-4"	3'-10 1/2"	13'-3 1/2"	14'-5 3/4"	14'-1 1/2"	21'-9"	55'-9 3/4"	18'-4"	28'-7 1/4"
18'	15"	8'-0"	2'-1"	3'-9 3/4"	71'-7 3/4"	3'-3 3/4"	13'-11"	15'-2 1/4"	14'-8 1/4"	24'-3"	55'-7 3/4"	20'-6"	28'-5 1/4"
20'	15"	9'-0"	2'-6"	4'-2 3/4"	73'-11 1/2"	3'-8 3/4"	15'-6"	16'-9 1/4"	16'-3 1/4"	26'-6 3/4"	55'-7 3/4"	22'-6"	28'-5 1/4"



APPROVED BY BRIDGE ENGINEER *Scott Luedtke* DATE 4/2/10

OKLAHOMA DEPT. OF TRANSPORTATION
BRIDGE STANDARD (ENGLISH)
 RCB CULVERTS - END SECTION DETAILS
 SINGLE CELL - 8'-0" HEIGHT - 30°
 SHEET NO. 1 OF 3

2009 SPECIFICATIONS RCB-E1-H8-30-1 01E B-678E