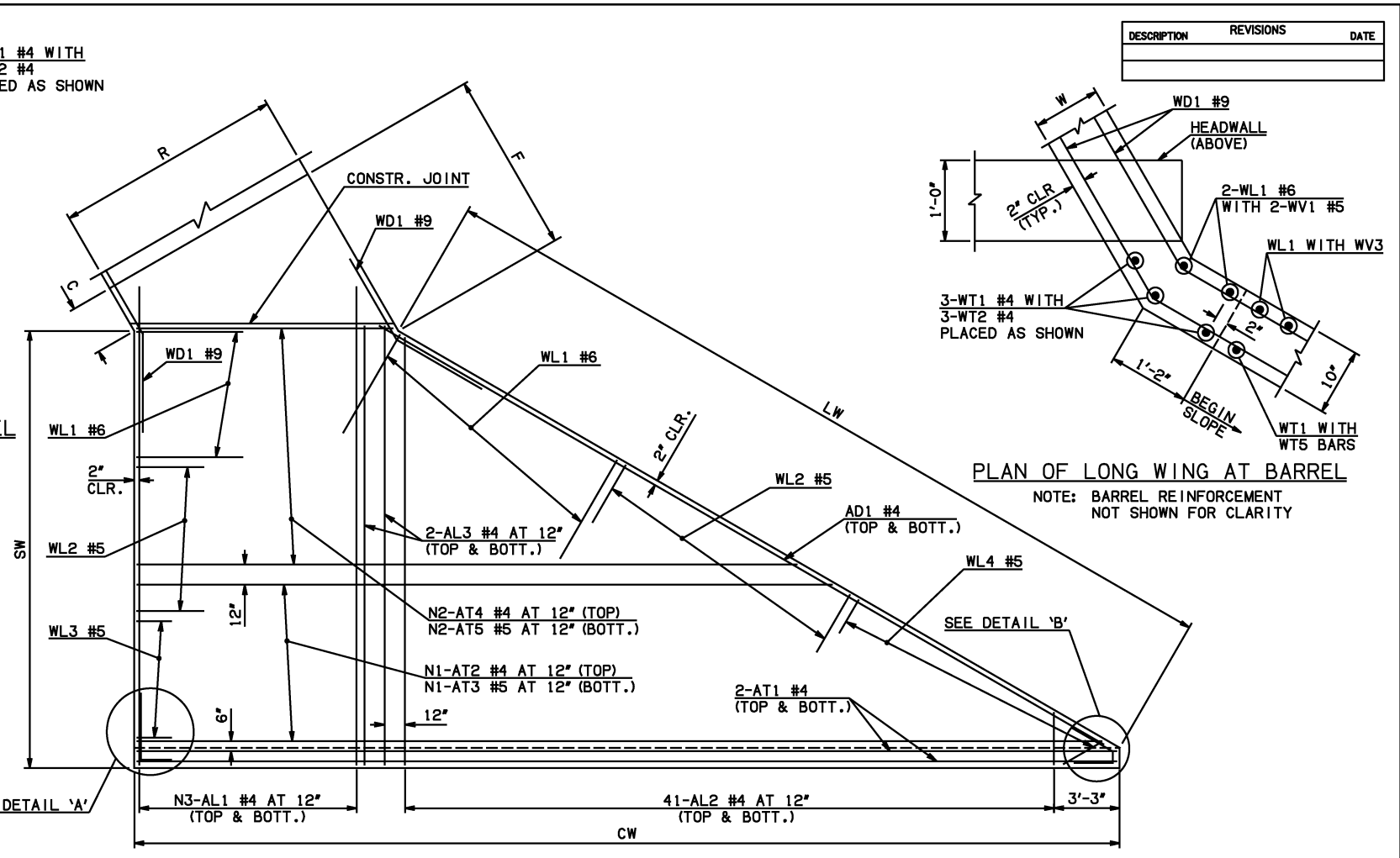


END SECTION PLAN



APRON REINFORCING

APRON BAR LIST

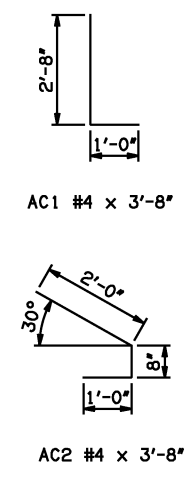
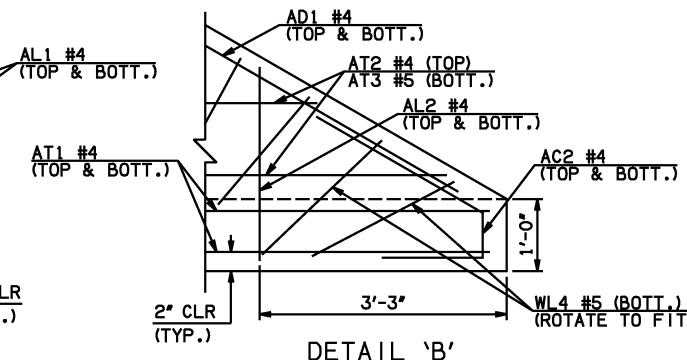
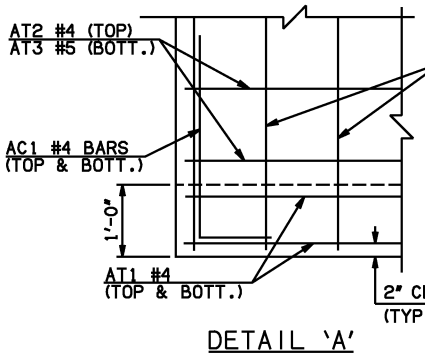
ONE APRON SHOWN																							
MARK	SIZE	FORM	5' SPAN			8' SPAN			10' SPAN			12' SPAN			14' SPAN			16' SPAN			18' SPAN		
			QTY.	LENGTH	REMARKS	QTY.	LENGTH	REMARKS	QTY.	LENGTH	REMARKS	QTY.	LENGTH	REMARKS	QTY.	LENGTH	REMARKS	QTY.	LENGTH	REMARKS	QTY.	LENGTH	REMARKS
AC1	#4	BNT	2	3'-8"		2	3'-8"		2	3'-8"		2	3'-8"		2	3'-8"		2	3'-8"		2	3'-8"	
AD1	#4	STR	2	51'-6"		2	51'-6"		2	51'-6"		2	51'-6"		2	51'-6"		2	51'-6"		2	51'-6"	
AL1	#4	STR	12	28'-9"		20	28'-9"		24	28'-9"		30	28'-9"		34	28'-9"		38	28'-9"		44	28'-9"	
AL2	#4	STR	82	14'-0 1/2" AVG.	2'-6" TO 25'-7"	82	14'-0 1/2" AVG.	2'-6" TO 25'-7"	82	14'-0 1/2" AVG.	2'-6" TO 25'-7"	82	14'-0 1/2" AVG.	2'-6" TO 25'-7"	82	14'-0 1/2" AVG.	2'-6" TO 25'-7"	82	14'-0 1/2" AVG.	2'-6" TO 25'-7"	82	14'-0 1/2" AVG.	2'-6" TO 25'-7"
AL3	#4	STR	4	26'-9"		4	26'-9"		4	26'-9"		4	26'-9"		4	26'-9"		4	26'-9"		4	26'-9"	
AT1	#4	STR	4	51'-1"		4	54'-6"		4	56'-10"		4	59'-2"		4	63'-11" (1)		4	66'-3" (1)		4	68'-7" (1)	
AT2	#4	STR	26	28'-8" AVG.	7'-0" TO 50'-4"	26	32'-1 1/2" AVG.	10'-6" TO 53'-9"	26	34'-5 1/2" AVG.	12'-10" TO 56'-1"	26	36'-9" AVG.	15'-1" TO 58'-5"	1	63'-3"		2	64'-7 1/2" AVG.	63'-9" TO 65'-6"	4	65'-3" AVG.	62'-8" TO 67'-10"
AT3	#5	STR	26	28'-8" AVG.	7'-0" TO 50'-4"	26	32'-1 1/2" AVG.	10'-6" TO 53'-9"	26	34'-5 1/2" AVG.	12'-10" TO 56'-1"	26	36'-9" AVG.	15'-1" TO 58'-5"	1	63'-3"		2	64'-7 1/2" AVG.	63'-9" TO 65'-6"	4	65'-3" AVG.	62'-8" TO 67'-10"
AT4	#4	STR	0			0			0			0			25	38'-2 1/2" AVG.	17'-5" TO 59'-0"	24	39'-8" AVG.	19'-9" TO 59'-7"	22	40'-2 1/2" AVG.	22'-0" TO 58'-5"
AT5	#5	STR	0			0			0			0			25	38'-2 1/2" AVG.	17'-5" TO 59'-0"	24	39'-8" AVG.	19'-9" TO 59'-7"	22	40'-2 1/2" AVG.	22'-0" TO 58'-5"

- ① INCLUDES 2'-6" LAP. NO LAPS REQUIRED FOR 5', 8', 10', OR 12' SPANS.
- ② QUANTITY SHOWN REPRESENTS TWO SETS.

NOTE: SEE END SECTION DETAILS SHEET NO. 2 OF 3 FOR VARIABLE REINFORCING QUANTITIES.

END SECTION VARIABLE DIMENSIONS

SPAN	W	A	B	C	CW	D	E	F	G	H	LW	R	SW
5'	10"	4'-0"	2'-1"	2'-10"	51'-5 1/4"	3'-0 3/4"	5'-11"	6'-8 3/4"	6'-11 1/4"	8'-3 1/4"	50'-5 3/4"	6'-8"	26'-3 1/4"
8'	10"	5'-0"	2'-2 1/2"	2'-11 1/2"	54'-10 3/4"	3'-2 1/4"	7'-9 1/2"	8'-7"	8'-9 3/4"	11'-8 3/4"	50'-5 3/4"	9'-8"	26'-3 1/4"
10'	12"	6'-0"	2'-6 1/2"	3'-8 1/4"	57'-2 1/2"	3'-7 1/4"	9'-5 1/2"	10'-5 1/2"	10'-4 3/4"	14'-5 1/4"	50'-1 3/4"	12'-0"	25'-11 1/4"
12'	12"	7'-0"	2'-11 1/2"	4'-1 1/4"	59'-6 1/4"	4'-0 1/2"	11'-0 1/2"	12'-0 1/4"	11'-11 1/2"	16'-9"	50'-1 3/4"	14'-0"	25'-11 1/4"
14'	13"	7'-0"	2'-4"	3'-8"	61'-10"	3'-5 1/2"	11'-8"	12'-9"	12'-6 1/2"	19'-3"	49'-11 3/4"	16'-2"	25'-9 1/4"
16'	14"	8'-0"	2'-8 1/2"	4'-2 3/4"	64'-1 3/4"	3'-10 1/2"	13'-3 1/2"	14'-5 3/4"	14'-1 1/2"	21'-9"	49'-9 3/4"	18'-4"	25'-7 1/4"
18'	15"	8'-0"	2'-1"	3'-9 3/4"	66'-5 1/2"	3'-3 3/4"	13'-11"	15'-2 1/4"	14'-8 1/4"	24'-3"	49'-7 3/4"	20'-6"	25'-5 1/4"



APPROVED BY BRIDGE ENGINEER *Scott Luch* DATE 4/2/10

OKLAHOMA DEPT. OF TRANSPORTATION  
BRIDGE STANDARD (ENGLISH)  
RCB CULVERTS - END SECTION DETAILS  
SINGLE CELL - 7'-0" HEIGHT - 30°  
SHEET NO. 1 OF 3

2009 SPECIFICATIONS RCB-E1-H7-30-1 01E B-675E