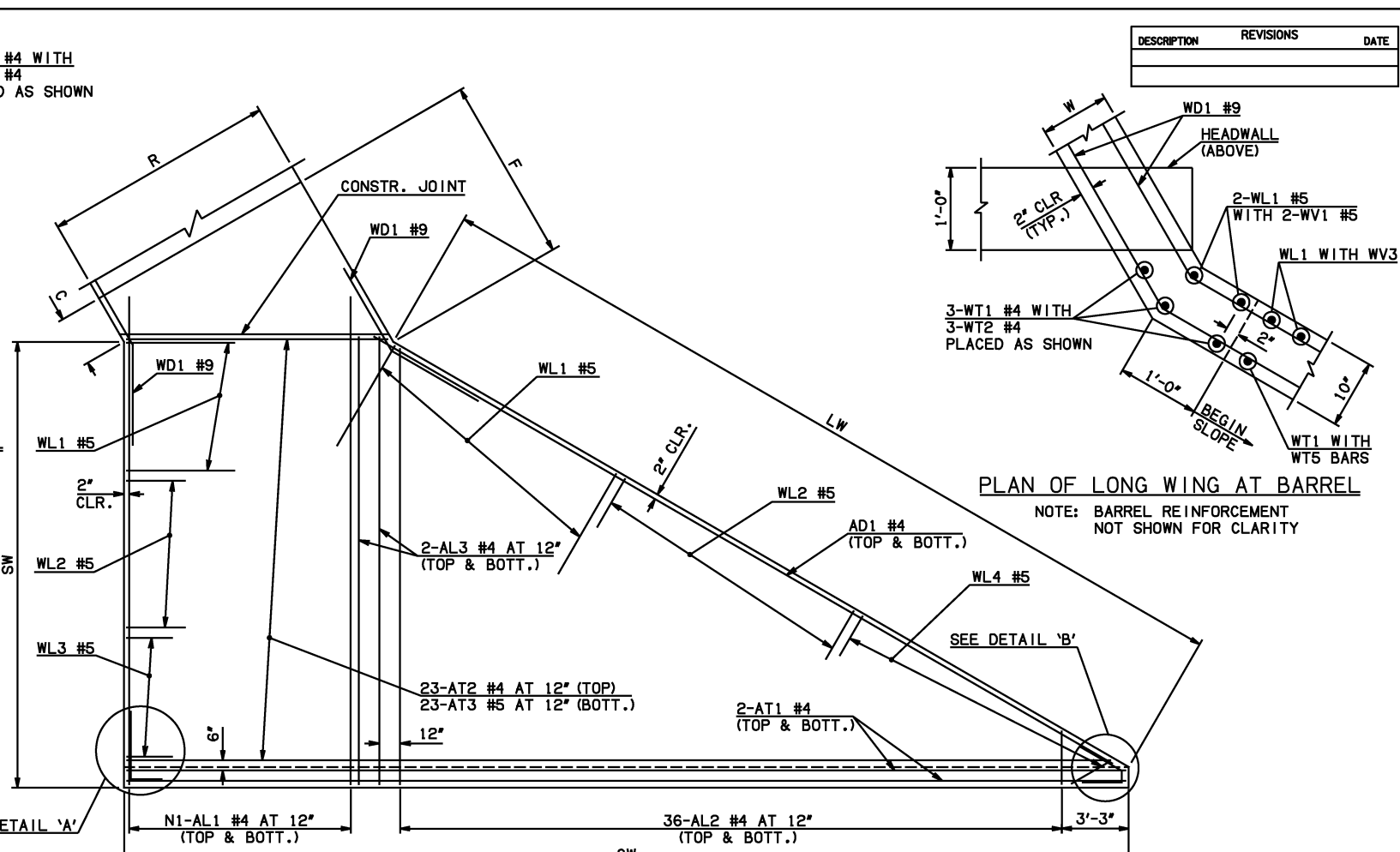
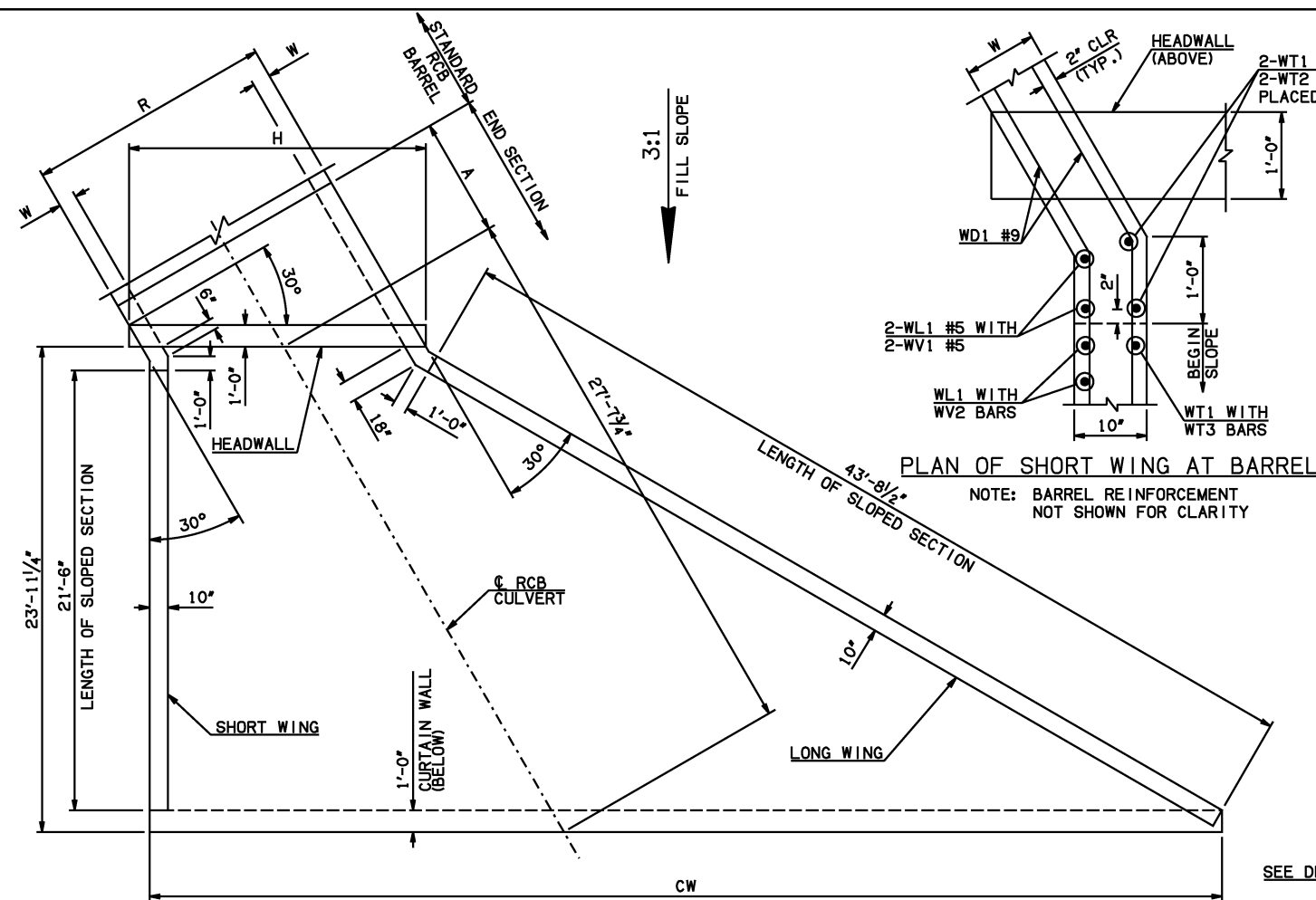
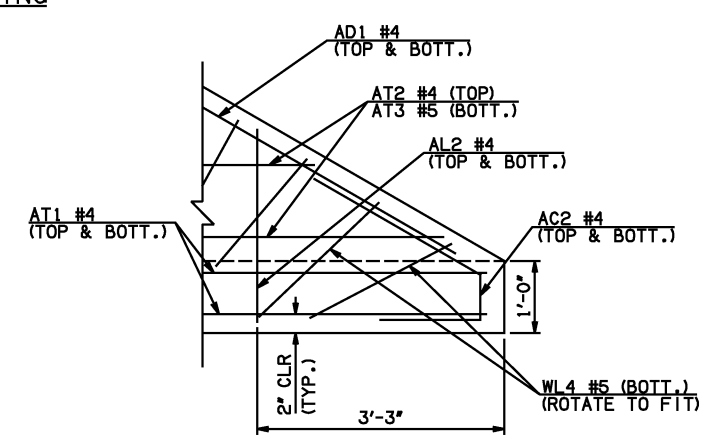
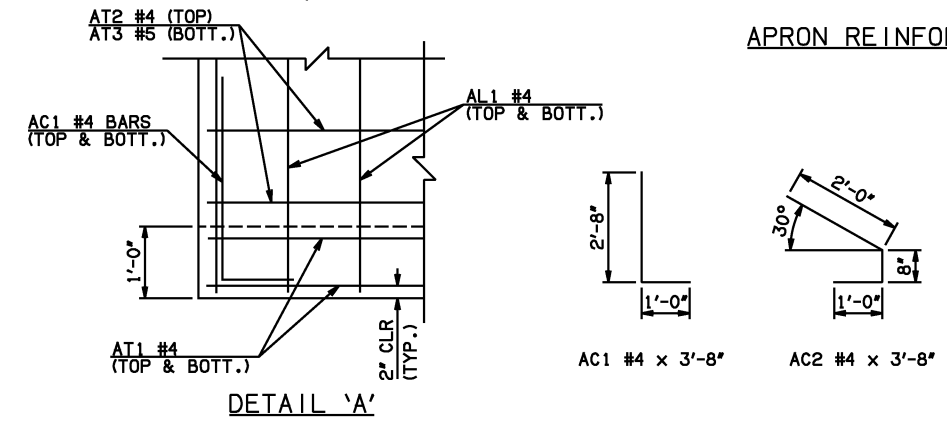


DESCRIPTION	REVISIONS	DATE



NOTE: SEE END SECTION DETAILS SHEET NO. 2 OF 3 FOR VARIABLE REINFORCING QUANTITIES.

END SECTION VARIABLE DIMENSIONS													
SPAN	W	A	B	C	CW	D	E	F	G	H	LW	R	SW
6'	9"	5'-0"	2'-10"	3'-4 <sup>3</sup> / <sub>4</sub> "	47'-4 <sup>3</sup> / <sub>4</sub> "	3'-9 <sup>1</sup> / <sub>4</sub> "	7'-2"	7'-10 <sup>1</sup> / <sub>4</sub> "	8'-2 <sup>3</sup> / <sub>4</sub> "	9'-2 <sup>3</sup> / <sub>4</sub> "	44'-7 <sup>3</sup> / <sub>4</sub> "	7'-6"	23'-5 <sup>1</sup> / <sub>4</sub> "
8'	10"	5'-0"	2'-2 <sup>1</sup> / <sub>2</sub> "	2'-11 <sup>1</sup> / <sub>2</sub> "	49'-8 <sup>1</sup> / <sub>2</sub> "	3'-2 <sup>1</sup> / <sub>4</sub> "	7'-9 <sup>1</sup> / <sub>2</sub> "	8'-7"	8'-9 <sup>3</sup> / <sub>4</sub> "	11'-8 <sup>3</sup> / <sub>4</sub> "	44'-5 <sup>3</sup> / <sub>4</sub> "	9'-8"	23'-3 <sup>1</sup> / <sub>4</sub> "
10'	12"	6'-0"	2'-6 <sup>1</sup> / <sub>2</sub> "	3'-8 <sup>1</sup> / <sub>4</sub> "	52'-0 <sup>1</sup> / <sub>4</sub> "	3'-7 <sup>1</sup> / <sub>4</sub> "	9'-5 <sup>1</sup> / <sub>2</sub> "	10'-5 <sup>1</sup> / <sub>2</sub> "	10'-4 <sup>3</sup> / <sub>4</sub> "	14'-5 <sup>1</sup> / <sub>4</sub> "	44'-1 <sup>3</sup> / <sub>4</sub> "	12'-0"	22'-11 <sup>1</sup> / <sub>4</sub> "
12'	12"	7'-0"	2'-11 <sup>1</sup> / <sub>2</sub> "	4'-1 <sup>1</sup> / <sub>4</sub> "	54'-4"	4'-0 <sup>1</sup> / <sub>2</sub> "	11'-0 <sup>1</sup> / <sub>2</sub> "	12'-0 <sup>1</sup> / <sub>4</sub> "	11'-11 <sup>1</sup> / <sub>2</sub> "	16'-9"	44'-1 <sup>3</sup> / <sub>4</sub> "	14'-0"	22'-11 <sup>1</sup> / <sub>4</sub> "
14'	12"	7'-0"	2'-4 <sup>1</sup> / <sub>2</sub> "	3'-6 <sup>1</sup> / <sub>4</sub> "	56'-7 <sup>3</sup> / <sub>4</sub> "	3'-5 <sup>1</sup> / <sub>2</sub> "	11'-7 <sup>1</sup> / <sub>2</sub> "	12'-7 <sup>1</sup> / <sub>4</sub> "	12'-6 <sup>1</sup> / <sub>2</sub> "	19'-0 <sup>3</sup> / <sub>4</sub> "	44'-1 <sup>3</sup> / <sub>4</sub> "	16'-0"	22'-11 <sup>1</sup> / <sub>4</sub> "
16'	14"	8'-0"	2'-8 <sup>1</sup> / <sub>2</sub> "	4'-2 <sup>3</sup> / <sub>4</sub> "	58'-11 <sup>1</sup> / <sub>4</sub> "	3'-10 <sup>1</sup> / <sub>2</sub> "	13'-3 <sup>1</sup> / <sub>2</sub> "	14'-5 <sup>3</sup> / <sub>4</sub> "	14'-1 <sup>1</sup> / <sub>2</sub> "	21'-9"	43'-9 <sup>3</sup> / <sub>4</sub> "	18'-4"	22'-7 <sup>1</sup> / <sub>4</sub> "



APRON BAR LIST																				
ONE APRON SHOWN																				
MARK	SIZE	FORM	6' SPAN			8' SPAN			10' SPAN			12' SPAN			14' SPAN			16' SPAN		
			QTY.	LENGTH	REMARKS	QTY.	LENGTH	REMARKS	QTY.	LENGTH	REMARKS	QTY.	LENGTH	REMARKS	QTY.	LENGTH	REMARKS	QTY.	LENGTH	REMARKS
AC1	#4	BNT	2	3'-8"		2	3'-8"		2	3'-8"		2	3'-8"		2	3'-8"		2	3'-8"	
AC2	#4	BNT	2	3'-8"		2	3'-8"		2	3'-8"		2	3'-8"		2	3'-8"		2	3'-8"	
AD1	#4	STR	2	45'-6"		2	45'-6"		2	45'-6"		2	45'-6"		2	45'-6"		2	45'-6"	
AL1	#4	STR	14	25'-9"		20	25'-9"		24	25'-9"		30	25'-9"		34	25'-9"		38	25'-9"	
AL2	#4	STR	72	12'-7" AVG.	2'-6" TO 22'-8"	72	12'-7" AVG.	2'-6" TO 22'-8"	72	12'-7" AVG.	2'-6" TO 22'-8"	72	12'-7" AVG.	2'-6" TO 22'-8"	72	12'-7" AVG.	2'-6" TO 22'-8"	72	12'-7" AVG.	2'-6" TO 22'-8"
AL3	#4	STR	4	23'-9"		4	23'-9"		4	23'-9"		4	23'-9"		4	23'-9"		4	23'-9"	
AT1	#4	STR	4	47'-0"		4	49'-4"		4	51'-8"		4	53'-11"		4	56'-3"		4	58'-7"	
AT2	#4	STR	23	27'-2 <sup>1</sup> / <sub>2</sub> " AVG.	8'-2" TO 46'-3"	23	29'-6 <sup>1</sup> / <sub>2</sub> " AVG.	10'-6" TO 48'-7"	23	31'-10 <sup>1</sup> / <sub>2</sub> " AVG.	12'-10" TO 50'-11"	23	34'-2" AVG.	15'-1" TO 53'-3"	23	36'-5 <sup>1</sup> / <sub>2</sub> " AVG.	17'-5" TO 55'-6"	23	38'-9 <sup>1</sup> / <sub>2</sub> " AVG.	19'-9" TO 57'-10"
AT3	#5	STR	23	27'-2 <sup>1</sup> / <sub>2</sub> " AVG.	8'-2" TO 46'-3"	23	29'-6 <sup>1</sup> / <sub>2</sub> " AVG.	10'-6" TO 48'-7"	23	31'-10 <sup>1</sup> / <sub>2</sub> " AVG.	12'-10" TO 50'-11"	23	34'-2" AVG.	15'-1" TO 53'-3"	23	36'-5 <sup>1</sup> / <sub>2</sub> " AVG.	17'-5" TO 55'-6"	23	38'-9 <sup>1</sup> / <sub>2</sub> " AVG.	19'-9" TO 57'-10"

① QUANTITY SHOWN REPRESENTS TWO SETS.

APPROVED BY BRIDGE ENGINEER *Scott Luch* DATE 4/2/10

**OKLAHOMA DEPT. OF TRANSPORTATION**  
**BRIDGE STANDARD (ENGLISH)**  
 RCB CULVERTS - END SECTION DETAILS  
 SINGLE CELL - 6'-0" HEIGHT - 30°  
 SHEET NO. 1 OF 3

2009 SPECIFICATIONS | RCB-E1-H6-30-1 | 01E | B-672E