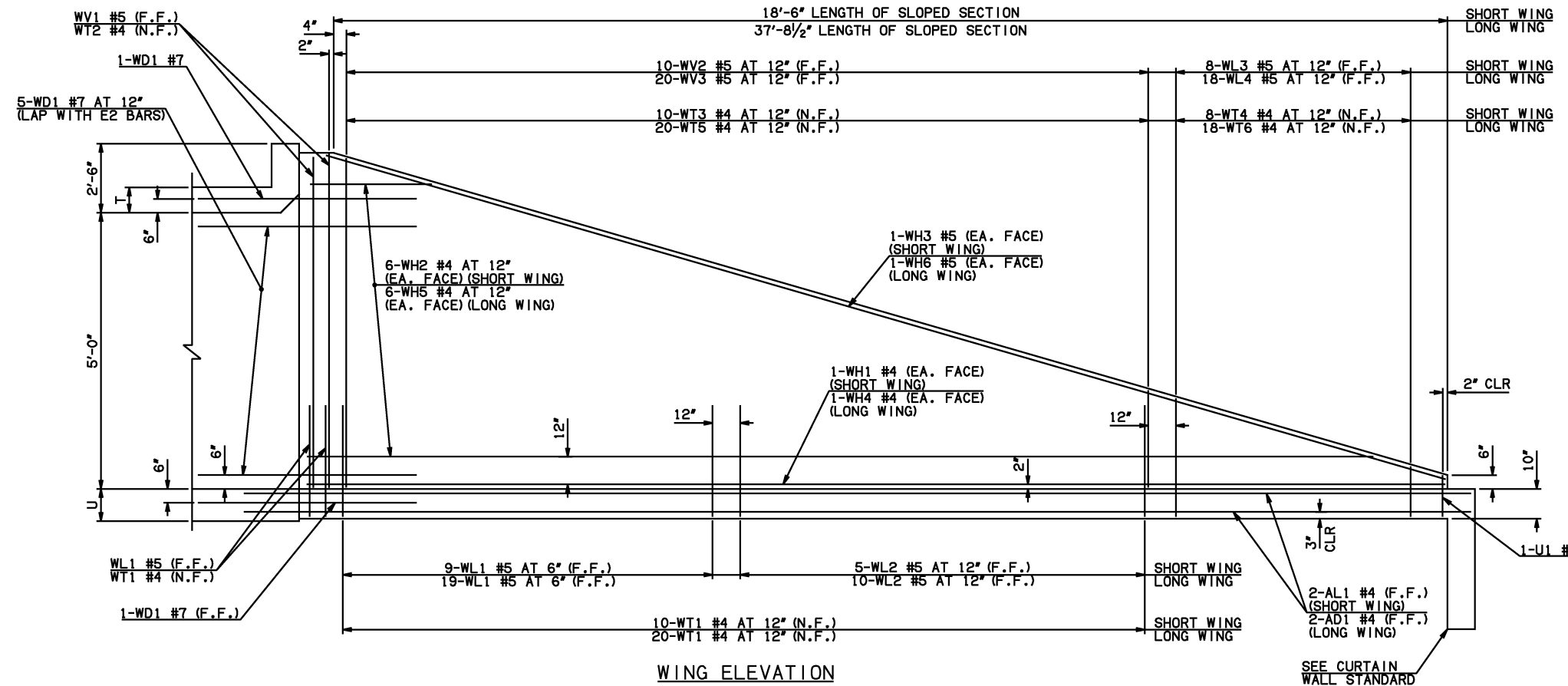
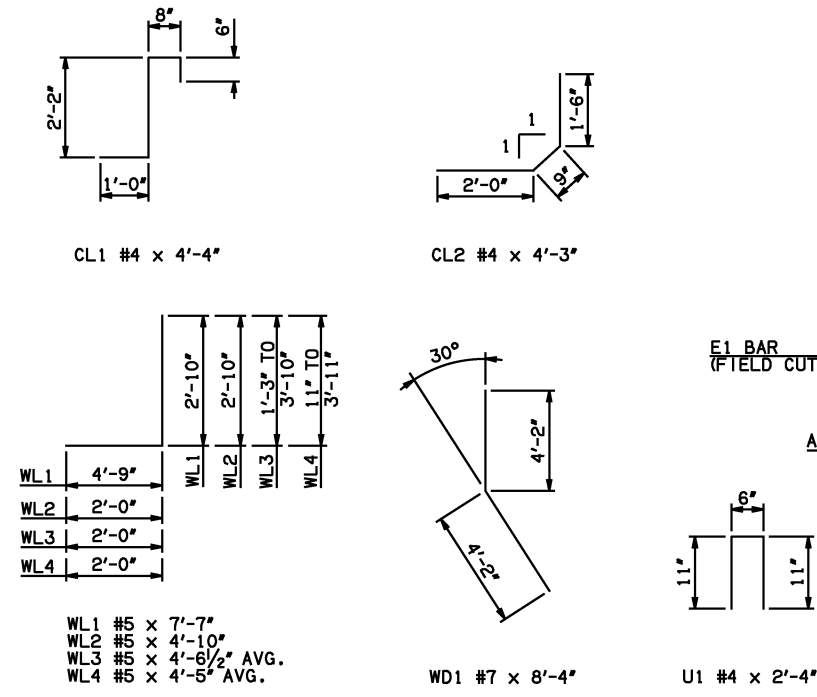
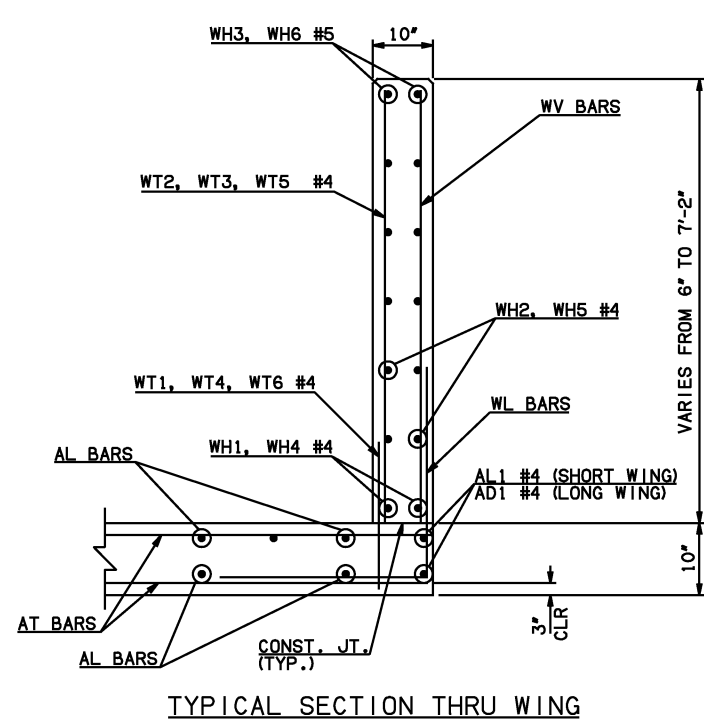
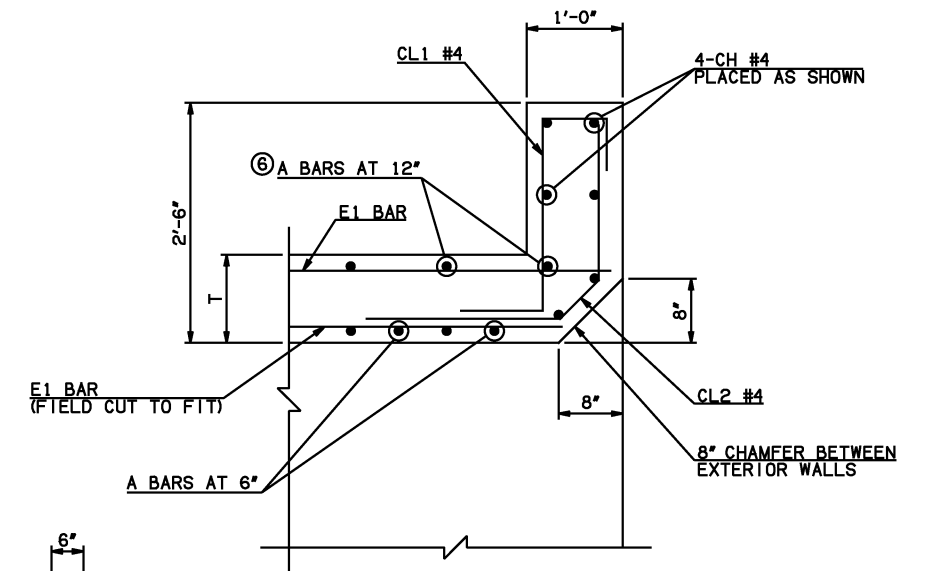
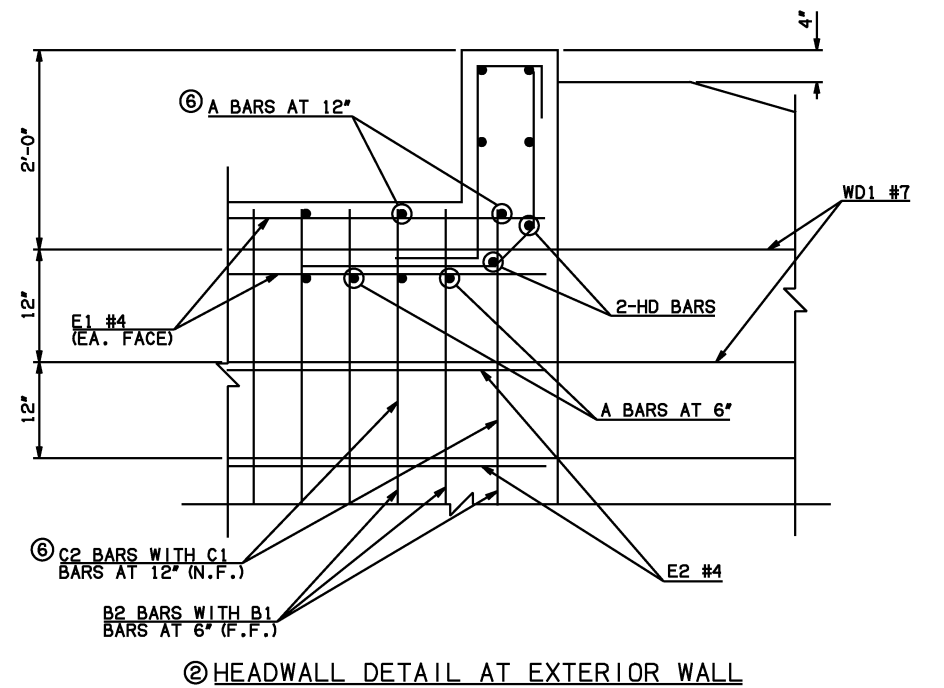


DESCRIPTION	REVISIONS	DATE



NOTE: F.F. = FAR FACE
N.F. = NEAR FACE



WINGWALL BAR LIST (LONG AND SHORT WING INCLUDED)					
MARK	SIZE	QTY.	FORM	LENGTH	REMARKS
WD1	#7	14	BNT	8'-4"	
WH1	#4	2	STR	19'-4"	
WH2	#4	12	STR	10'-1 1/2" AVG.	3'-2" TO 17'-1"
WH3	#5	2	STR	19'-5"	
WH4	#4	2	STR	38'-6"	
WH5	#4	12	STR	19'-9" AVG.	5'-7" TO 33'-11"
WH6	#5	2	STR	38'-1"	
WL1	#5	32	BNT	7'-7"	
WL2	#5	15	BNT	4'-10"	
WL3	#5	8	BNT	4'-6 1/2" AVG.	3'-3" TO 5'-10"
WL4	#5	18	BNT	4'-5" AVG.	2'-11" TO 5'-11"
WT1	#4	35	STR	2'-10"	
WT2	#4	5	STR	7'-0"	
WT3	#4	10	STR	5'-2 1/2" AVG.	3'-7" TO 6'-10"
WT4	#4	8	STR	2'-6 1/2" AVG.	1'-3" TO 3'-10"
WT5	#4	20	STR	5'-2 1/2" AVG.	3'-6" TO 6'-11"
WT6	#4	18	STR	2'-5" AVG.	11" TO 3'-11"
WV1	#5	4	STR	7'-0"	
WV2	#5	10	STR	5'-2 1/2" AVG.	3'-7" TO 6'-10"
WV3	#5	20	STR	5'-2 1/2" AVG.	3'-6" TO 6'-11"
U1	#4	2	BNT	2'-4"	

HEADWALL BAR LIST																			
ONE HEADWALL SHOWN																			
MARK	FORM	5' SPAN			6' SPAN			8' SPAN			10' SPAN			12' SPAN			14' SPAN		
		SIZE	QTY.	LENGTH	SIZE	QTY.	LENGTH	SIZE	QTY.	LENGTH	SIZE	QTY.	LENGTH	SIZE	QTY.	LENGTH	SIZE	QTY.	LENGTH
CH	STR	#4	4	7'-6"	#4	4	8'-6"	#4	4	11'-4"	#4	4	13'-8"	#4	4	16'-2"	#4	4	18'-8"
CL1	BNT	#4	8	4'-4"	#4	9	4'-4"	#4	12	4'-4"	#4	14	4'-4"	#4	16	4'-4"	#4	19	4'-4"
CL2	BNT	#4	8	4'-3"	#4	9	4'-3"	#4	12	4'-3"	#4	14	4'-3"	#4	16	4'-3"	#4	19	4'-3"
HD	STR	#6	2	7'-6"	#6	2	8'-6"	#6	2	11'-4"	#8	2	13'-8"	#8	2	16'-2"	#8	2	18'-8"

NOTES:
 ① QUANTITY SHOWN REPRESENTS TWO SETS.
 ② FOR FURTHER INFORMATION REGARDING END SECTION BARS A, B, C, E1, AND E2, REFER TO RCB CULVERT - BARREL DETAILS.
 ③ 10', 12', AND 14' SPANS ONLY

APPROVED BY BRIDGE ENGINEER *Scott J. Smith* DATE 4/2/10

OKLAHOMA DEPT. OF TRANSPORTATION
BRIDGE STANDARD (ENGLISH)
 RCB CULVERTS - END SECTION DETAILS
 SINGLE CELL - 5'-0" HEIGHT - 30°
 SHEET NO. 3 OF 3

2009 SPECIFICATIONS | RCB-E1-H5-30-3 | 01E | B-671E