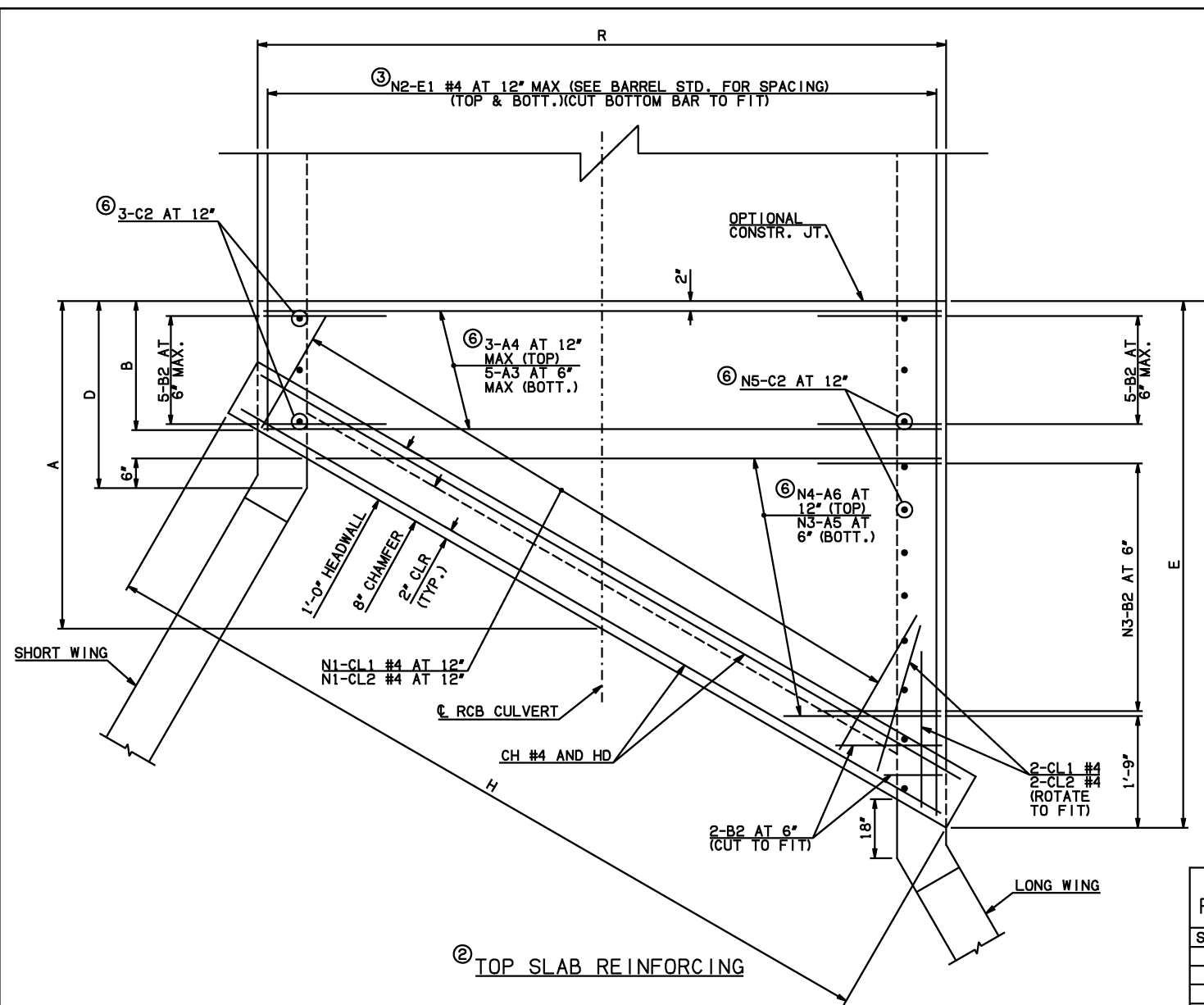
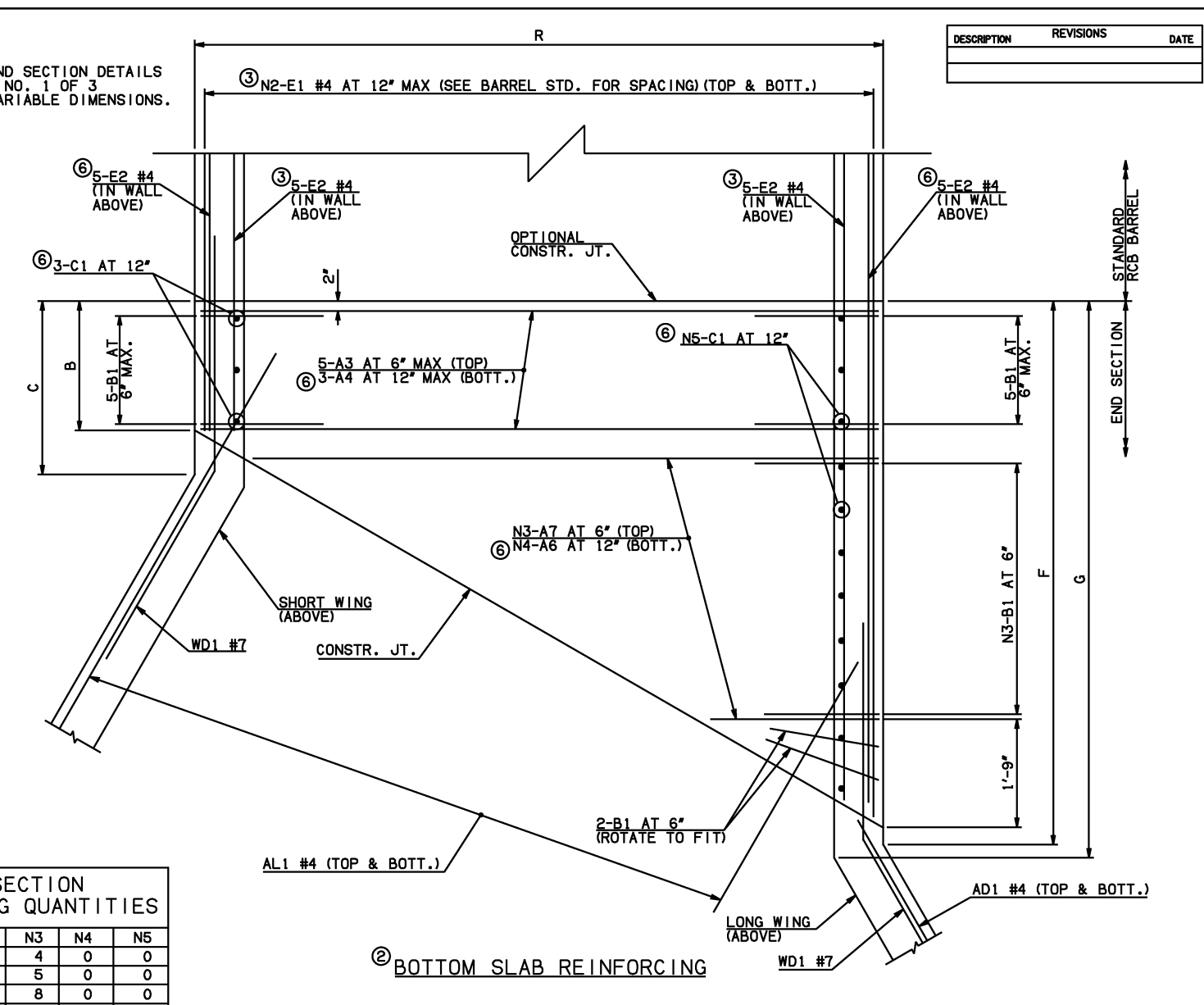


DESCRIPTION	REVISIONS	DATE



NOTE: SEE END SECTION DETAILS SHEET NO. 1 OF 3 FOR VARIABLE DIMENSIONS.



END SECTION REINFORCING QUANTITIES

SPAN	N1	N2	N3	N4	N5
5'	6	11	4	0	0
6'	7	12	5	0	0
8'	10	14	8	0	0
10'	12	14	10	5	10
12'	14	16	13	7	12
14'	17	18	15	8	13

END CONNECTION BAR LIST

MARK	FORM	ONE END CONNECTION SHOWN																									
		5' SPAN				6' SPAN				8' SPAN				10' SPAN				12' SPAN				14' SPAN					
SIZE	QTY.	LENGTH	REMARKS	SIZE	QTY.	LENGTH	REMARKS	SIZE	QTY.	LENGTH	REMARKS	SIZE	QTY.	LENGTH	REMARKS	SIZE	QTY.	LENGTH	REMARKS	SIZE	QTY.	LENGTH	REMARKS				
A3	STR	#6	10	6'-0"	#6	10	6'-10"	#7	10	9'-4"	#7	10	11'-4"	#7	10	13'-6"	#7	10	15'-8"	#7	10	15'-8"	#7	10	15'-8"		
A4	STR		0			0			0			#4	6	11'-4"	#4	6	13'-6"	#4	6	15'-8"	#4	6	15'-8"	#4	6	15'-8"	
A5	STR	#6	4	2'-7 1/2" AVG.	1'-4" TO 3'-11"	#6	5	3'-1" AVG.	1'-4" TO 4'-10"	#7	8	4'-4 1/2" AVG.	1'-4" TO 7'-5"	#7	10	5'-3" AVG.	1'-4" TO 9'-2"	#7	13	6'-6 1/2" AVG.	1'-4" TO 11'-9"	#7	15	7'-5" AVG.	1'-4" TO 13'-6"		
A6	STR		0			0			0			#4	10	5'-11 1/2" AVG.	2'-6" TO 9'-5"	#4	14	7'-8 1/2" AVG.	2'-6" TO 12'-11"	#4	16	8'-6 1/2" AVG.	2'-6" TO 14'-7"	#4	16	8'-6 1/2" AVG.	2'-6" TO 14'-7"
A7	STR	#6	4	3'-9 1/2" AVG.	2'-6" TO 5'-1"	#6	5	4'-2 1/2" AVG.	2'-6" TO 5'-11"	#7	8	5'-6 1/2" AVG.	2'-6" TO 8'-7"	#7	10	6'-4 1/2" AVG.	2'-6" TO 10'-3"	#7	13	7'-8 1/2" AVG.	2'-6" TO 12'-11"	#7	15	8'-6 1/2" AVG.	2'-6" TO 14'-7"		
B1	BNT	#5	16	3'-1"		#4	17	2'-7"		#4	20	2'-10"		#5	22	4'-7"		#6	25	5'-7"		#6	27	6'-0"			
B2	BNT	#5	16	6'-5"		#4	17	6'-3"		#4	20	6'-6"		#5	22	7'-11"		#6	25	8'-6"		#6	27	8'-11"			
C1	STR		0				0				0			#4	13	2'-2"		#4	15	2'-3"		#4	16	2'-4"			
C2	STR		0				0				0			#4	13	5'-10"		#4	15	5'-11"		#4	16	6'-0"			
E1	STR	#4	22	3'-9" AVG.	2'-0" TO 5'-6"	#4	24	4'-9 1/2" AVG.	2'-10" TO 6'-9"	#4	28	4'-9 1/2" AVG.	2'-1" TO 7'-6"	#4	56	5'-9" AVG.	2'-6" TO 9'-0"	#4	64	5'-9" AVG.	1'-10" TO 9'-8"	#4	72	6'-9" AVG.	2'-3" TO 11'-3"		
E2	STR	#4	10	3'-8" AVG.	2'-0" AND 5'-4"	#4	10	4'-8 1/2" AVG.	2'-10" AND 6'-7"	#4	10	4'-7 1/2" AVG.	2'-1" AND 7'-2"	#4	20	5'-7 1/2" AVG.	2'-6" AND 8'-9"	#4	20	5'-7" AVG.	1'-10" AND 9'-4"	#4	20	6'-7" AVG.	2'-3" AND 10'-11"		

QUANTITIES

ITEM	UNIT	5' SPAN	6' SPAN	8' SPAN	10' SPAN	12' SPAN	14' SPAN
CLASS AA CONCRETE	CY	26.30	27.80	31.20	35.10	38.40	43.60
REINFORCING STEEL	LB	3700.00	3780.00	4220.00	5030.00	5720.00	6300.00

NOTE: QUANTITIES ABOVE ARE FOR ONE END SECTION, WHICH IS COMPRISED OF ONE END CONNECTION, ONE HEADWALL, ONE APRON, AND TWO WINGWALLS.

- NOTES: ① QUANTITY SHOWN REPRESENTS TWO SETS.  
 ② FOR FURTHER INFORMATION REGARDING END SECTION BARS A, B, C, E1, AND E2, REFER TO RCB CULVERT - BARREL DETAILS.  
 ③ LENGTHS OF E1 & E2 BARS SHOWN ARE ADDITIONAL LENGTHS REQUIRED FOR THE END SECTION. LAP SPLICES, AS REQUIRED, SHALL BE IN ACCORDANCE WITH RCB BARREL STANDARD NOTES.  
 ④ FOR SPANS 10' AND LONGER, 4-SETS OF N2-E1 BARS REQUIRED. FOR 5', 6', AND 8' SPANS, 2-SETS OF N2-E1 BARS REQUIRED.  
 ⑤ QUANTITY SHOWN REPRESENTS 2-SETS OF E2 BARS WITH LENGTHS AS SHOWN CORRESPONDING TO SHORT EXTERIOR WALL AND LONG EXTERIOR WALL.  
 ⑥ 10', 12', AND 14' SPANS ONLY.

APPROVED BY BRIDGE ENGINEER *Scott Luch* DATE 4/2/10

**OKLAHOMA DEPT. OF TRANSPORTATION**  
**BRIDGE STANDARD (ENGLISH)**  
 RCB CULVERTS - END SECTION DETAILS  
 SINGLE CELL - 5'-0" HEIGHT - 30"  
 SHEET NO. 2 OF 3

2009 SPECIFICATIONS | RCB-E1-H5-30-2 | 01E | B-670E