

END SECTION PLAN

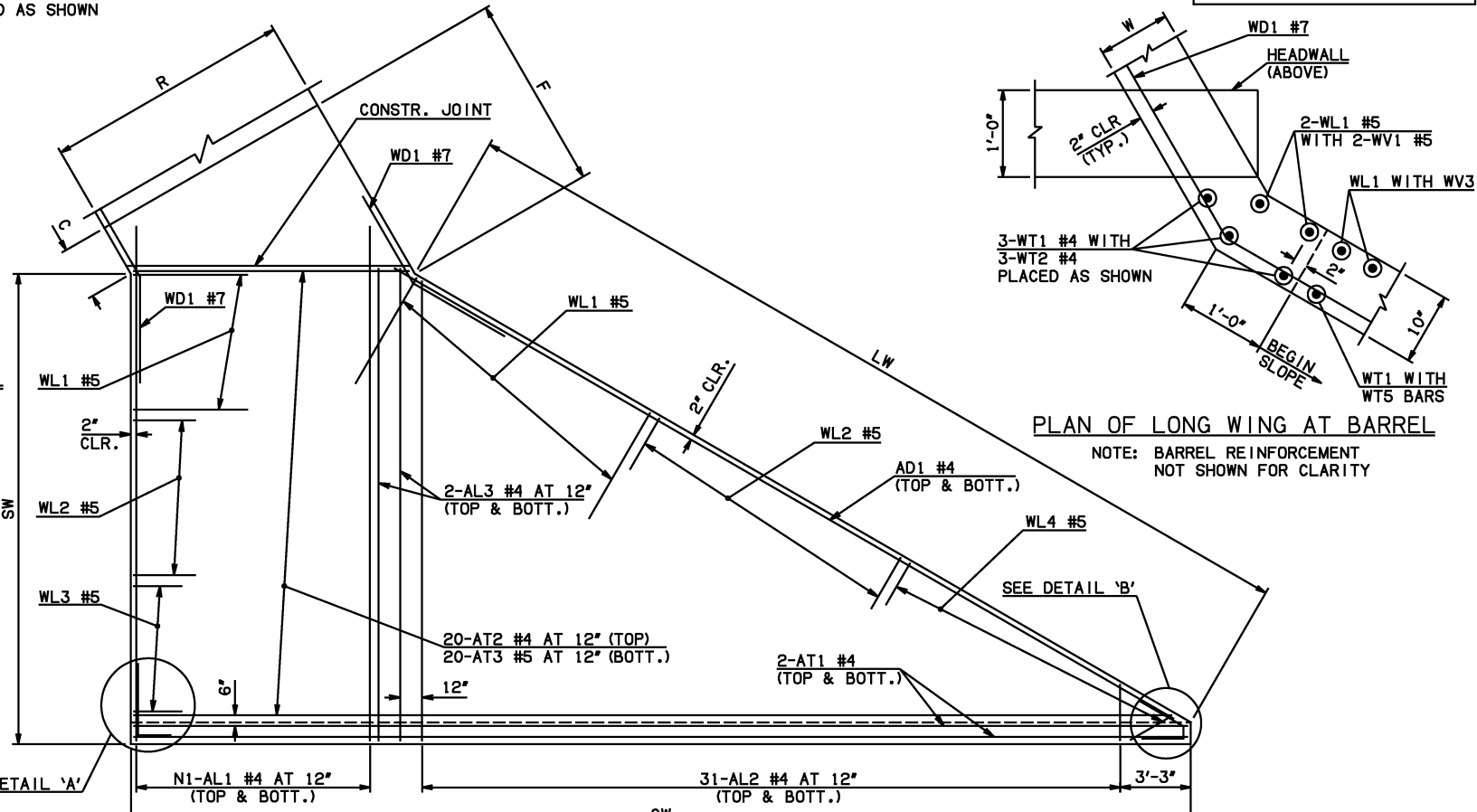
NOTE: SEE END SECTION DETAILS SHEET NO. 2 OF 3 FOR VARIABLE REINFORCING QUANTITIES.

END SECTION VARIABLE DIMENSIONS

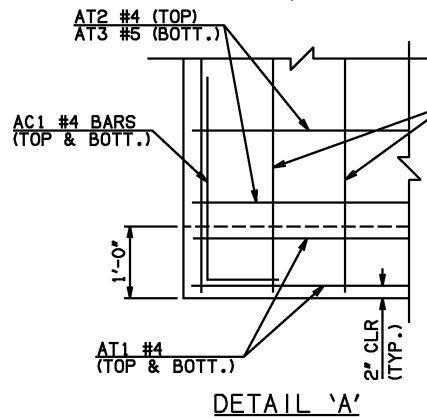
SPAN	W	A	B	C	CW	D	E	F	G	H	LW	R	SW
5'	8"	4'-0"	2'-2"	2'-6 1/2"	41'-0 1/2"	3'-0 3/4"	5'-10"	6'-5 1/4"	6'-11 1/4"	7'-10 3/4"	38'-9 3/4"	6'-4"	20'-7 1/4"
6'	7"	5'-0"	2'-11 1/4"	3'-1 1/4"	42'-2 1/2"	3'-9 1/4"	7'-0 3/4"	7'-7"	8'-2 3/4"	8'-10 1/4"	38'-11 3/4"	7'-2"	20'-9 1/4"
8'	10"	5'-0"	2'-2 1/2"	2'-11 1/2"	44'-6 1/4"	3'-2 1/4"	7'-9 1/2"	8'-7"	8'-9 3/4"	11'-8 3/4"	38'-5 3/4"	9'-8"	20'-3 1/4"
10'	10"	6'-0"	2'-7 1/2"	3'-4 3/4"	46'-9 3/4"	3'-7 1/4"	9'-4 1/2"	10'-2"	10'-4 3/4"	14'-0 1/2"	38'-5 3/4"	11'-8"	20'-3 1/4"
12'	11"	6'-0"	2'-0"	2'-11 1/2"	49'-1 1/2"	3'-0 1/2"	10'-0"	10'-10 1/2"	10'-11 1/2"	16'-6 1/2"	38'-3 3/4"	13'-10"	20'-1 1/4"
14'	12"	7'-0"	2'-4 1/2"	3'-6 1/4"	51'-5 1/4"	3'-5 1/2"	11'-7 1/2"	12'-7 1/4"	12'-6 1/2"	19'-0 3/4"	38'-1 3/4"	16'-0"	19'-11 1/4"

PLAN OF SHORT WING AT BARREL

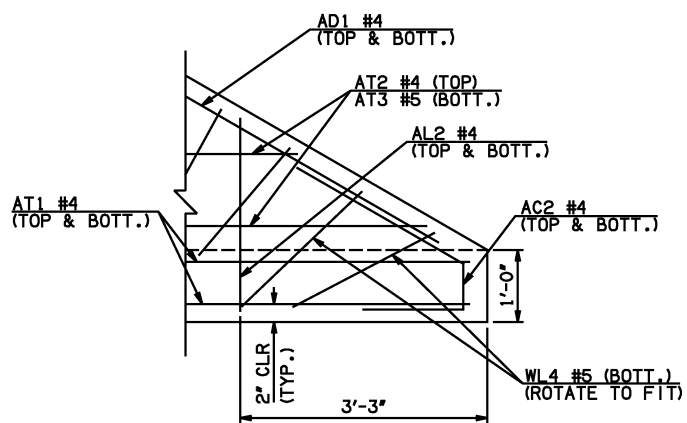
NOTE: BARREL REINFORCEMENT NOT SHOWN FOR CLARITY



APRON REINFORCING



DETAIL 'A'



DETAIL 'B'

APRON BAR LIST

ONE APRON SHOWN																				
MARK	SIZE	FORM	5' SPAN			6' SPAN			8' SPAN			10' SPAN			12' SPAN			14' SPAN		
			QTY.	LENGTH	REMARKS	QTY.	LENGTH	REMARKS	QTY.	LENGTH	REMARKS	QTY.	LENGTH	REMARKS	QTY.	LENGTH	REMARKS	QTY.	LENGTH	REMARKS
AC1	#4	BNT	2	3'-8"		2	3'-8"		2	3'-8"		2	3'-8"		2	3'-8"		2	3'-8"	
AC2	#4	BNT	2	3'-8"		2	3'-8"		2	3'-8"		2	3'-8"		2	3'-8"		2	3'-8"	
AD1	#4	STR	2	39'-6"		2	39'-6"		2	39'-6"		2	39'-6"		2	39'-6"		2	39'-6"	
AL1	#4	STR	12	22'-9"		14	22'-9"		20	22'-9"		24	22'-9"		28	22'-9"		34	22'-9"	
AL2	#4	STR	62	11'-2" AVG.	2'-6" TO 19'-10"	62	11'-2" AVG.	2'-6" TO 19'-10"	62	11'-2" AVG.	2'-6" TO 19'-10"	62	11'-2" AVG.	2'-6" TO 19'-10"	62	11'-2" AVG.	2'-6" TO 19'-10"	62	11'-2" AVG.	2'-6" TO 19'-10"
AL3	#4	STR	4	20'-9"		4	20'-9"		4	20'-9"		4	20'-9"		4	20'-9"		4	20'-9"	
AT1	#4	STR	4	40'-8"		4	41'-10"		4	44'-2"		4	46'-5"		4	48'-9"		4	51'-1"	
AT2	#4	STR	20	23'-5½" AVG.	7'-0" TO 39'-11"	20	24'-7½" AVG.	8'-2" TO 41'-1"	20	26'-11½" AVG.	10'-6" TO 43'-5"	20	29'-3" AVG.	12'-10" TO 45'-8"	20	31'-6½" AVG.	15'-1" TO 48'-0"	20	33'-10½" AVG.	17'-5" TO 50'-4"
AT3	#5	STR	20	23'-5½" AVG.	7'-0" TO 39'-11"	20	24'-7½" AVG.	8'-2" TO 41'-1"	20	26'-11½" AVG.	10'-6" TO 43'-5"	20	29'-3" AVG.	12'-10" TO 45'-8"	20	31'-6½" AVG.	15'-1" TO 48'-0"	20	33'-10½" AVG.	17'-5" TO 50'-4"

① QUANTITY SHOWN REPRESENTS TWO SETS.

APPROVED BY BRIDGE ENGINEER *Scott L. Luch* DATE 4/2/10

OKLAHOMA DEPT. OF TRANSPORTATION
BRIDGE STANDARD (ENGLISH)
 RCB CULVERTS - END SECTION DETAILS
 SINGLE CELL - 5'-0" HEIGHT - 30°
 SHEET NO. 1 OF 3

2009 SPECIFICATIONS RCB-E1-H5-30-1 01E
 B-669E