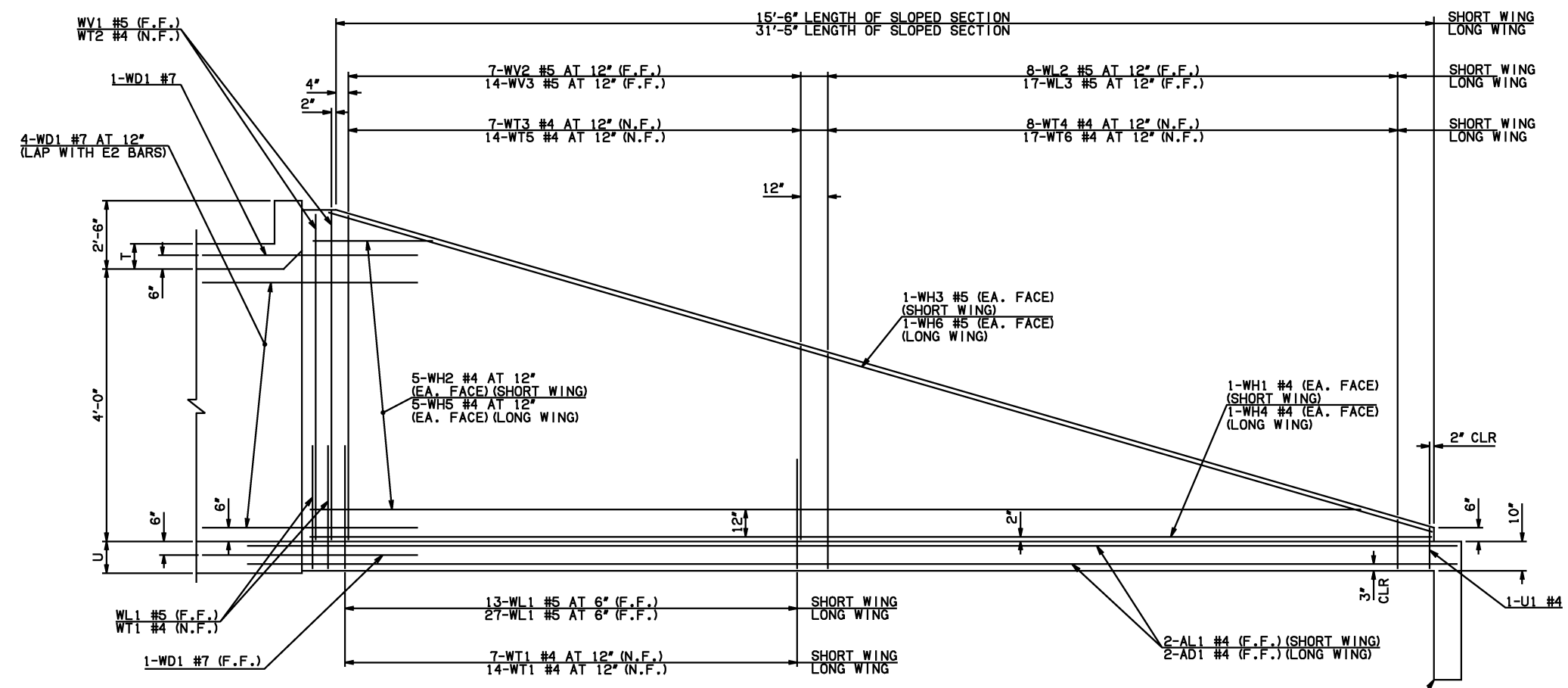
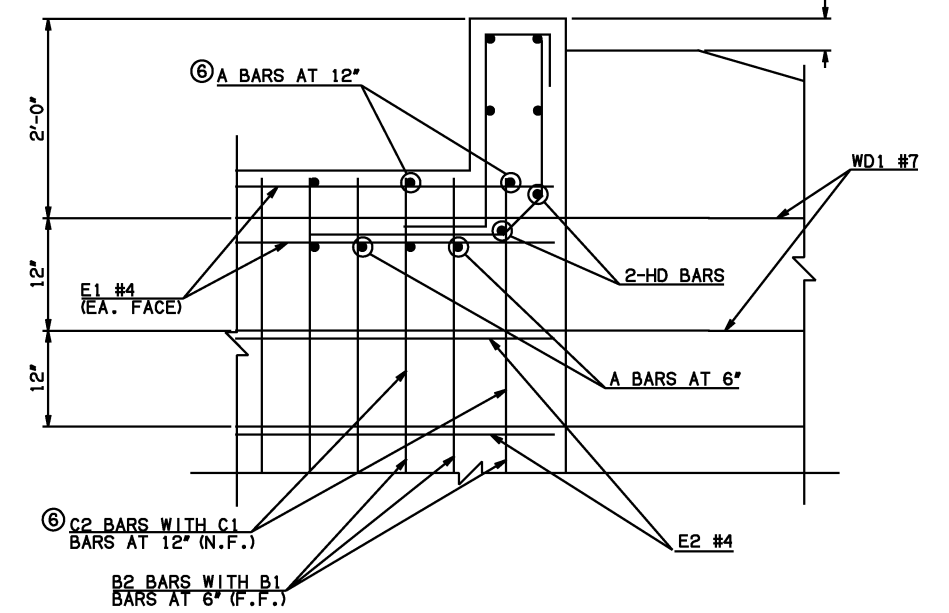


DESCRIPTION	REVISIONS	DATE

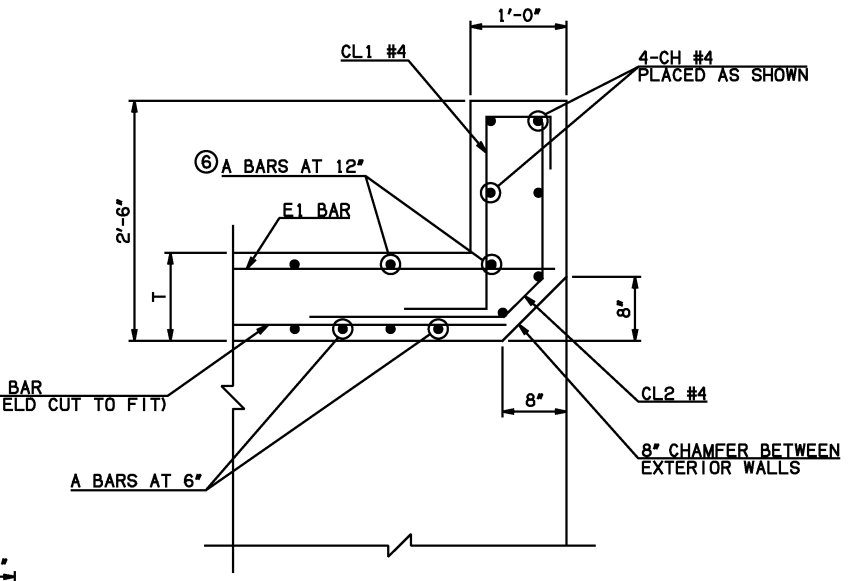


WING ELEVATION

NOTE: F.F. = FAR FACE
N.F. = NEAR FACE

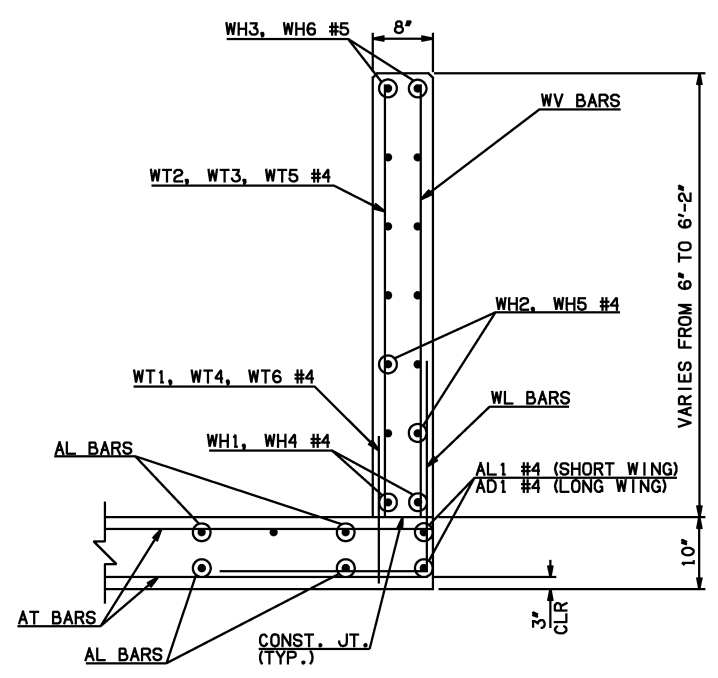


HEADWALL DETAIL AT EXTERIOR WALL



HEADWALL DETAIL AT MIDSPAN

DIMENSION SHOWN NORMAL TO HEADWALL
NOTES:
① QUANTITY SHOWN REPRESENTS TWO SETS.
② FOR FURTHER INFORMATION REGARDING END SECTION BARS A, B, C, E1, AND E2, REFER TO RCB CULVERT - BARREL DETAILS.
③ 10' AND 12' SPANS ONLY



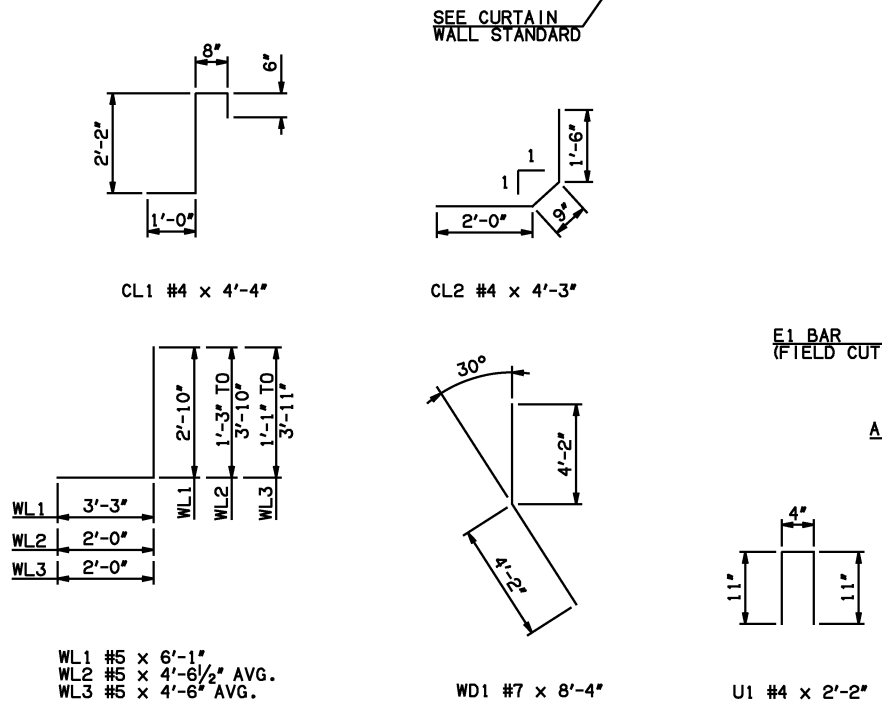
TYPICAL SECTION THRU WING

WINGWALL BAR LIST
(LONG AND SHORT WING INCLUDED)

MARK	SIZE	QTY.	FORM	LENGTH	REMARKS
WD1	#7	12	BNT	8'-4"	
WH1	#4	2	STR	16'-4"	
WH2	#4	10	STR	8'-8" AVG.	3'-2" TO 14'-2"
WH3	#5	2	STR	16'-3"	
WH4	#4	2	STR	32'-3"	
WH5	#4	10	STR	16'-7 1/2" AVG.	5'-6" TO 27'-9"
WH6	#5	2	STR	31'-9"	
WL1	#5	44	BNT	6'-1"	
WL2	#5	8	BNT	4'-6 1/2" AVG.	3'-3" TO 5'-10"
WL3	#5	17	BNT	4'-6" AVG.	3'-1" TO 5'-11"
WT1	#4	25	STR	2'-10"	
WT2	#4	5	STR	6'-0"	
WT3	#4	7	STR	4'-9" AVG.	3'-8" TO 5'-10"
WT4	#4	8	STR	2'-6 1/2" AVG.	1'-3" TO 3'-10"
WT5	#4	14	STR	4'-9" AVG.	3'-7" TO 5'-11"
WT6	#4	17	STR	2'-6" AVG.	1'-1" TO 3'-11"
WV1	#5	4	STR	6'-0"	
WV2	#5	7	STR	4'-9" AVG.	3'-8" TO 5'-10"
WV3	#5	14	STR	4'-9" AVG.	3'-7" TO 5'-11"
U1	#4	2	BNT	2'-2"	

HEADWALL BAR LIST

MARK	FORM	4' SPAN			5' SPAN			6' SPAN			8' SPAN			10' SPAN			12' SPAN		
		SIZE	QTY.	LENGTH	SIZE	QTY.	LENGTH	SIZE	QTY.	LENGTH	SIZE	QTY.	LENGTH	SIZE	QTY.	LENGTH	SIZE	QTY.	LENGTH
CH	STR	#4	4	6'-4"	#4	4	7'-4"	#4	4	8'-6"	#4	4	11'-4"	#4	4	13'-8"	#4	4	16'-2"
CL1	BNT	#4	7	4'-4"	#4	8	4'-4"	#4	9	4'-4"	#4	12	4'-4"	#4	14	4'-4"	#4	16	4'-4"
CL2	BNT	#4	7	4'-3"	#4	8	4'-3"	#4	9	4'-3"	#4	12	4'-3"	#4	14	4'-3"	#4	16	4'-3"
HD	STR	#6	2	6'-4"	#6	2	7'-4"	#6	2	8'-6"	#6	2	11'-4"	#8	2	13'-8"	#8	2	16'-2"



APPROVED BY BRIDGE ENGINEER *Scott J. Smith* DATE 4/2/10

OKLAHOMA DEPT. OF TRANSPORTATION
BRIDGE STANDARD (ENGLISH)
 RCB CULVERTS - END SECTION DETAILS
 SINGLE CELL - 4'-0" HEIGHT - 30°
 SHEET NO. 3 OF 3

2009 SPECIFICATIONS | RCB-E1-H4-30-3 | 01E | B-668E