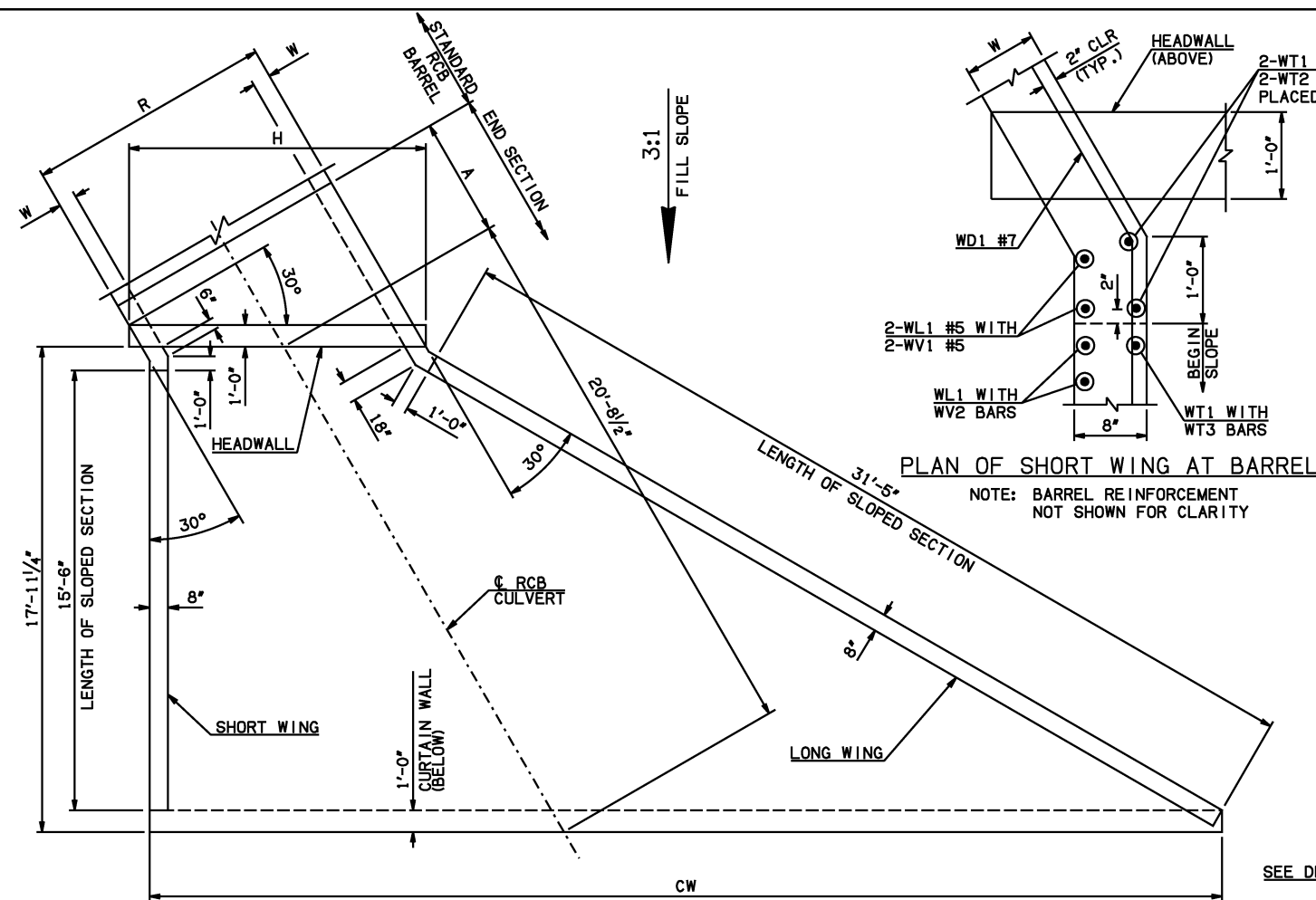
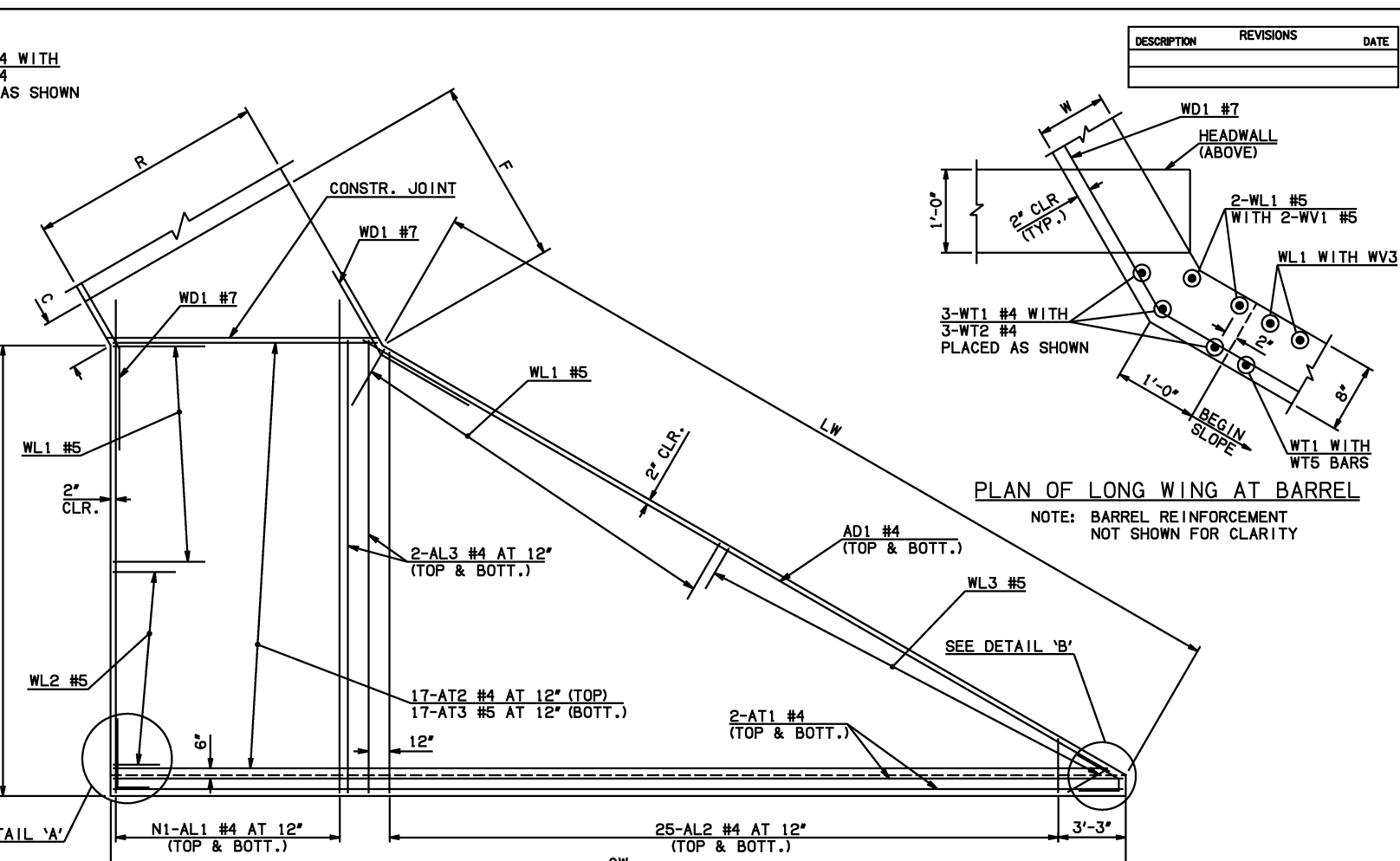


DESCRIPTION	REVISIONS	DATE



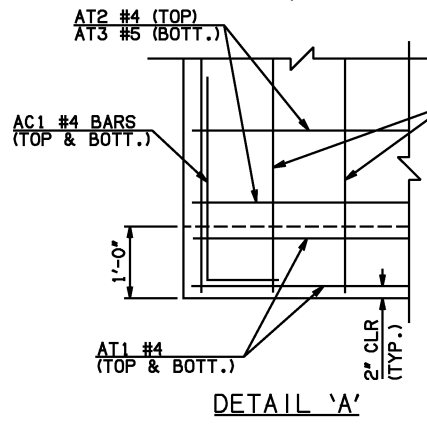
END SECTION PLAN

NOTE: SEE END SECTION DETAILS SHEET NO. 2 OF 3 FOR VARIABLE REINFORCING QUANTITIES.

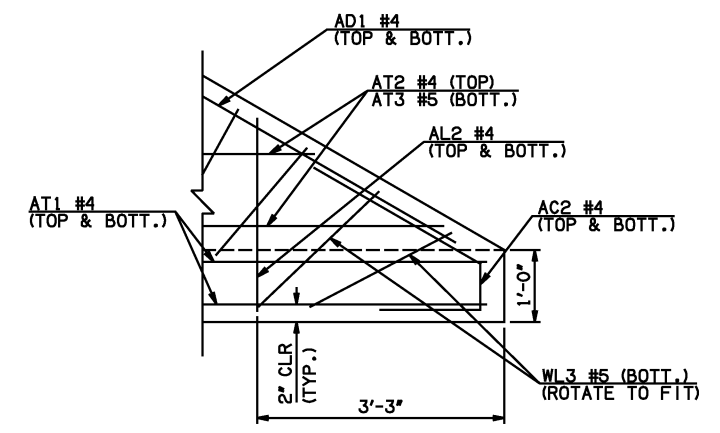
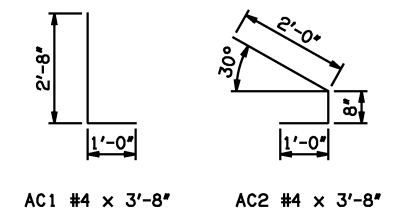


PLAN OF LONG WING AT BARREL

APRON REINFORCING



DETAIL 'A'



DETAIL 'B'

END SECTION VARIABLE DIMENSIONS													
SPAN	W	A	B	C	CW	D	E	F	G	H	LW	R	SW
4'	8"	4'-0"	2'-5 1/2"	3'-2"	34'-2 1/4"	3'-4 1/4"	5'-6 1/2"	6'-5 3/4"	6'-7 3/4"	6'-8 3/4"	32'-3"	5'-4"	17'-3 3/4"
5'	7"	4'-0"	2'-2 3/4"	2'-8 3/4"	35'-4 1/4"	3'-0 3/4"	5'-9 1/4"	6'-7 1/2"	6'-11 1/4"	7'-8 1/2"	32'-5"	6'-2"	17'-5 3/4"
6'	7"	5'-0"	2'-11 1/4"	3'-5 1/4"	36'-6"	3'-9 1/4"	7'-0 3/4"	7'-11"	8'-2 3/4"	8'-10 1/4"	32'-5"	7'-2"	17'-5 3/4"
8'	10"	5'-0"	2'-2 1/2"	3'-3 1/2"	38'-9 3/4"	3'-2 1/4"	7'-9 1/2"	8'-11"	8'-9 3/4"	11'-8 3/4"	31'-11"	9'-8"	16'-11 3/4"
10'	10"	6'-0"	2'-7 1/2"	3'-8 3/4"	41'-1 1/2"	3'-7 1/4"	9'-4 1/2"	10'-6"	10'-4 3/4"	14'-0 1/2"	31'-11"	11'-8"	16'-11 3/4"
12'	11"	6'-0"	2'-0"	3'-3 1/2"	43'-5 1/4"	3'-0 1/2"	10'-0"	10'-2 1/2"	10'-11 1/2"	16'-6 1/2"	31'-9"	13'-10"	16'-9 3/4"

APRON BAR LIST

MARK	SIZE	FORM	ONE APRON SHOWN																							
			4' SPAN				5' SPAN				6' SPAN				8' SPAN				10' SPAN				12' SPAN			
			QTY.	LENGTH	REMARKS	QTY.	LENGTH	REMARKS	QTY.	LENGTH	REMARKS	QTY.	LENGTH	REMARKS	QTY.	LENGTH	REMARKS	QTY.	LENGTH	REMARKS	QTY.	LENGTH	REMARKS			
AC1	#4	BNT	2	3'-8"		2	3'-8"		2	3'-8"		2	3'-8"		2	3'-8"		2	3'-8"		2	3'-8"				
AC2	#4	BNT	2	3'-8"		2	3'-8"		2	3'-8"		2	3'-8"		2	3'-8"		2	3'-8"		2	3'-8"				
AD1	#4	STR	2	33'-6"		2	33'-6"		2	33'-6"		2	33'-6"		2	33'-6"		2	33'-6"		2	33'-6"				
AL1	#4	STR	10	19'-9"		12	19'-9"		14	19'-9"		20	19'-9"		24	19'-9"		28	19'-9"		28	19'-9"				
AL2	#4	STR	50	9'-5' AVG.	2'-6" TO 16'-4"	50	9'-5' AVG.	2'-6" TO 16'-4"	50	9'-5' AVG.	2'-6" TO 16'-4"	50	9'-5' AVG.	2'-6" TO 16'-4"	50	9'-5' AVG.	2'-6" TO 16'-4"	50	9'-5' AVG.	2'-6" TO 16'-4"	50	9'-5' AVG.	2'-6" TO 16'-4"			
AL3	#4	STR	4	17'-9"		4	17'-9"		4	17'-9"		4	17'-9"		4	17'-9"		4	17'-9"		4	17'-9"				
AT1	#4	STR	4	33'-10"		4	35'-0"		4	36'-2"		4	38'-5"		4	40'-9"		4	43'-1"		4	43'-1"				
AT2	#4	STR	17	19'-2 1/2" AVG.	5'-4" TO 33'-1"	17	20'-4 1/2" AVG.	6'-6" TO 34'-3"	17	21'-6 1/2" AVG.	7'-8" TO 35'-5"	17	23'-10" AVG.	10'-0" TO 37'-8"	17	26'-2" AVG.	12'-4" TO 40'-0"	17	28'-5 1/2" AVG.	14'-7" TO 42'-4"	17	28'-5 1/2" AVG.	14'-7" TO 42'-4"			
AT3	#5	STR	17	19'-2 1/2" AVG.	5'-4" TO 33'-1"	17	20'-4 1/2" AVG.	6'-6" TO 34'-3"	17	21'-6 1/2" AVG.	7'-8" TO 35'-5"	17	23'-10" AVG.	10'-0" TO 37'-8"	17	26'-2" AVG.	12'-4" TO 40'-0"	17	28'-5 1/2" AVG.	14'-7" TO 42'-4"	17	28'-5 1/2" AVG.	14'-7" TO 42'-4"			

① QUANTITY SHOWN REPRESENTS TWO SETS.

APPROVED BY BRIDGE ENGINEER *Scott Luch* DATE 4/2/10

OKLAHOMA DEPT. OF TRANSPORTATION
BRIDGE STANDARD (ENGLISH)
 RCB CULVERTS - END SECTION DETAILS
 SINGLE CELL - 4'-0" HEIGHT - 30°
 SHEET NO. 1 OF 3

2009 SPECIFICATIONS | RCB-E1-H4-30-1 | 01E | B-666E