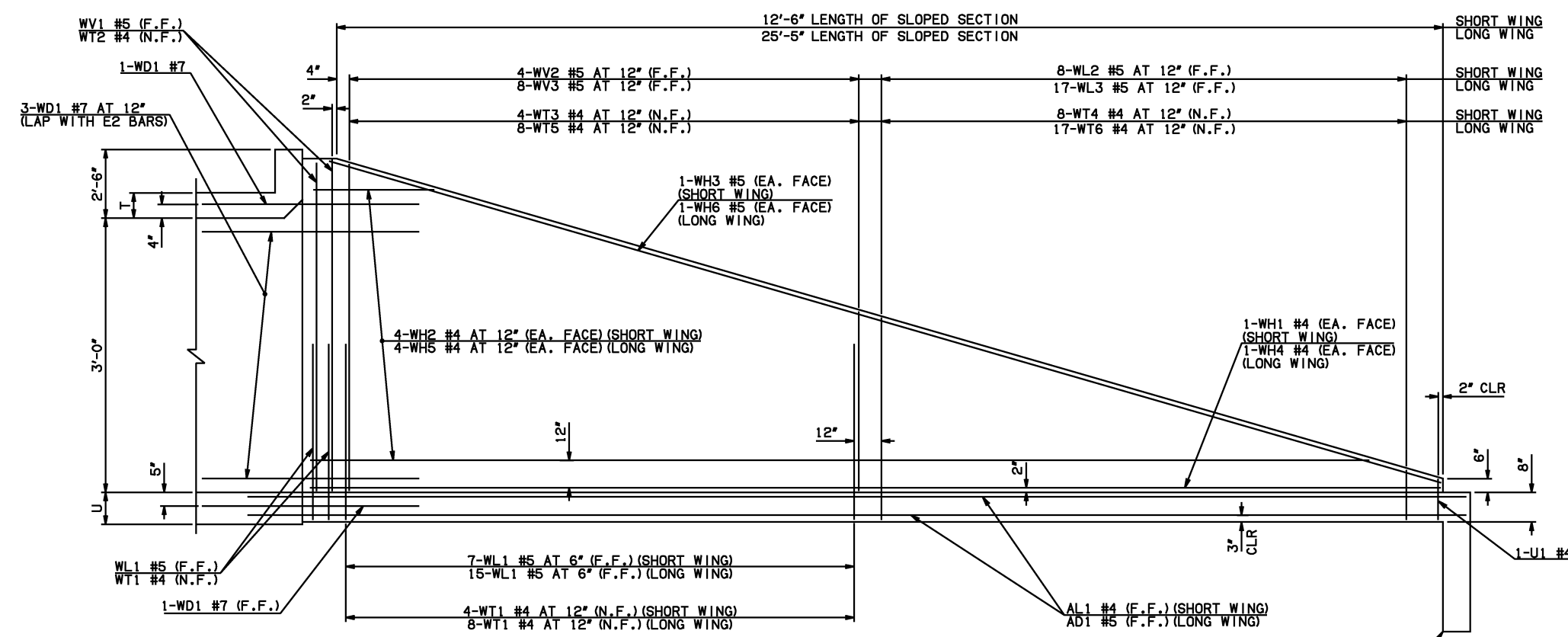
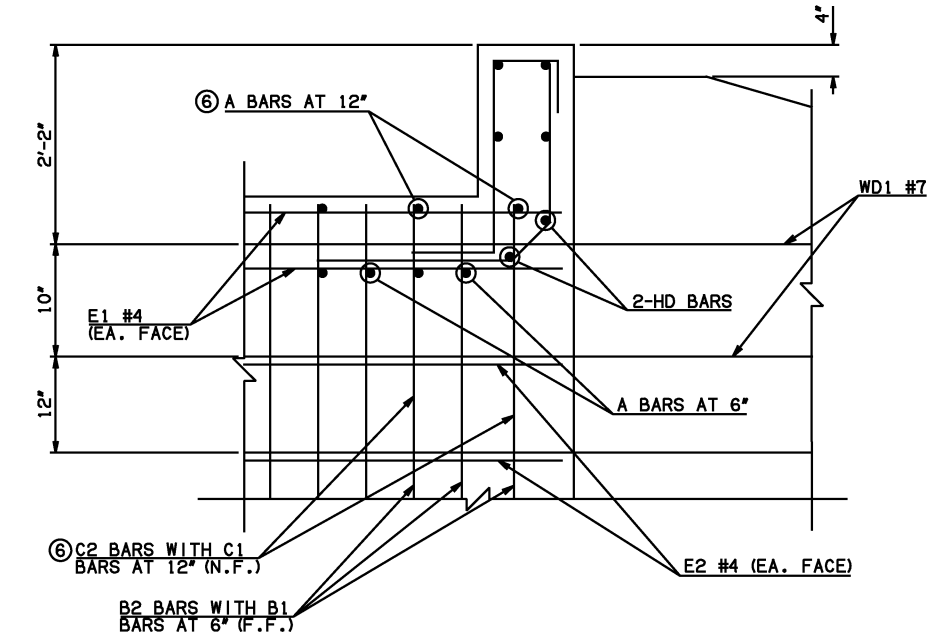


DESCRIPTION	REVISIONS	DATE

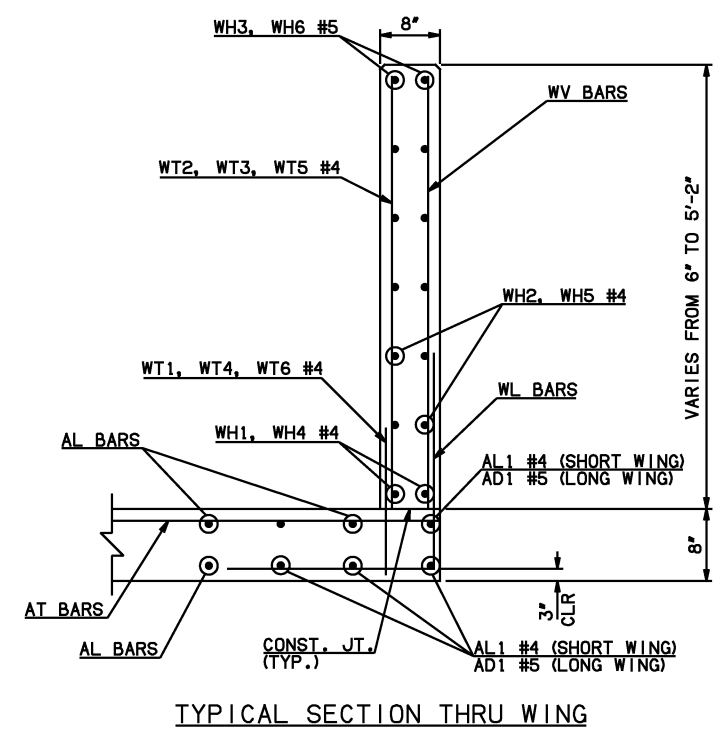


WING ELEVATION

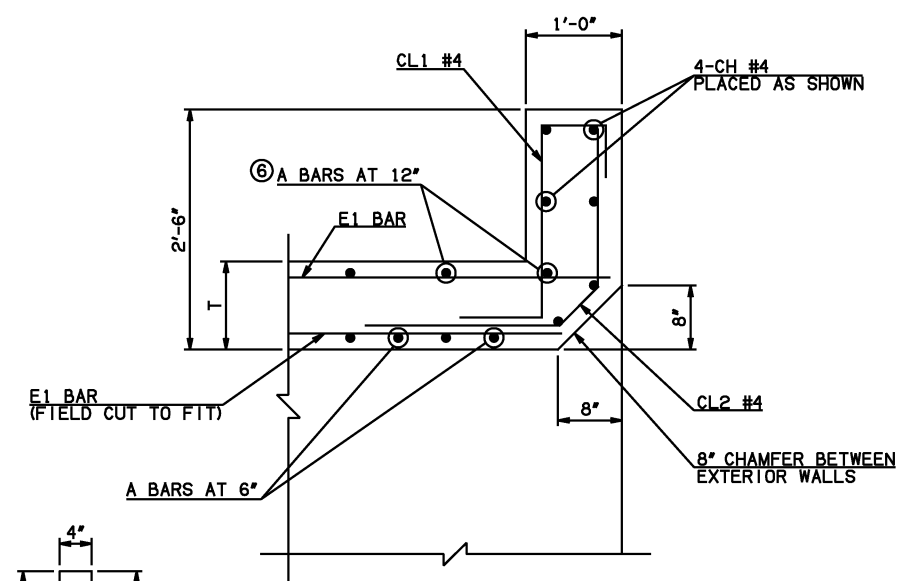
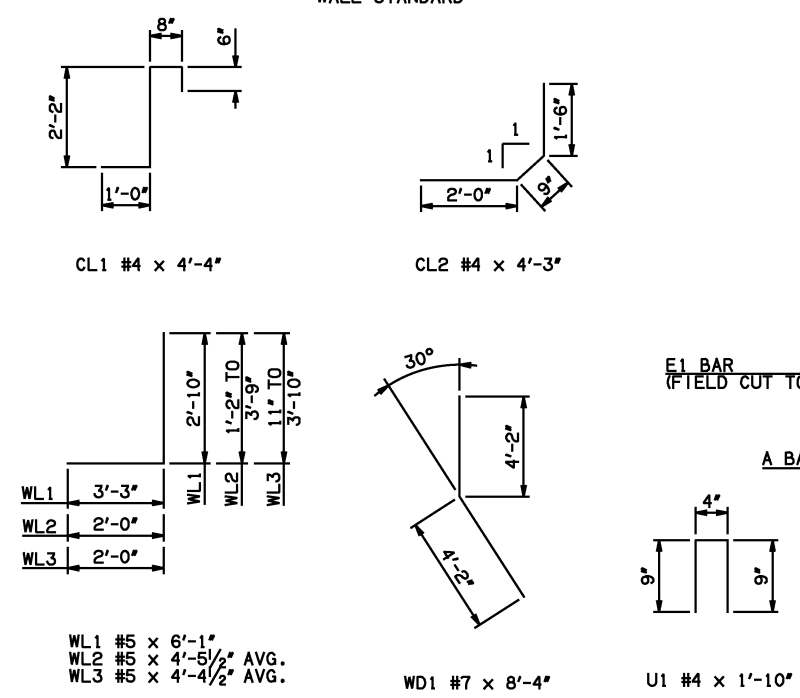
NOTE: F.F. = FAR FACE  
N.F. = NEAR FACE



HEADWALL DETAIL AT EXTERIOR WALL



TYPICAL SECTION THRU WING



HEADWALL DETAIL AT MIDSPAN

DIMENSION SHOWN NORMAL TO HEADWALL  
NOTES:  
① QUANTITY SHOWN REPRESENTS TWO SETS.  
② FOR FURTHER INFORMATION REGARDING END SECTION BARS A, B, C, E1, AND E2, REFER TO RCB CULVERT - BARREL DETAILS.  
③ 10' SPAN ONLY

WINGWALL BAR LIST (LONG AND SHORT WING INCLUDED)					
MARK	SIZE	QTY.	FORM	LENGTH	REMARKS
WD1	#7	10	BNT	8'-4"	
WH1	#4	2	STR	13'-4"	
① WH2	#4	8	STR	7'-2" AVG.	3'-2" TO 11'-2"
WH3	#5	2	STR	13'-1"	
WH4	#4	2	STR	26'-3"	
① WH5	#4	8	STR	13'-7 1/2" AVG.	5'-5" TO 21'-10"
WH6	#5	2	STR	25'-8"	
WL1	#5	26	BNT	6'-1"	
WL2	#5	8	BNT	4'-5 1/2" AVG.	3'-2" TO 5'-9"
WL3	#5	17	BNT	4'-4 1/2" AVG.	2'-11" TO 5'-10"
WT1	#4	17	STR	2'-10"	
WT2	#4	5	STR	5'-0"	
WT3	#4	4	STR	4'-3" AVG.	3'-8" TO 4'-10"
WT4	#4	8	STR	2'-5 1/2" AVG.	1'-2" TO 3'-9"
WT5	#4	8	STR	4'-3" AVG.	3'-7" TO 4'-11"
WT6	#4	17	STR	2'-4 1/2" AVG.	11" TO 3'-10"
WV1	#5	4	STR	5'-0"	
WV2	#5	4	STR	4'-3" AVG.	3'-8" TO 4'-10"
WV3	#5	8	STR	4'-3" AVG.	3'-7" TO 4'-11"
U1	#4	2	BNT	1'-10"	

HEADWALL BAR LIST															
		ONE HEADWALL SHOWN													
MARK	FORM	3' SPAN		4' SPAN		5' SPAN		6' SPAN		8' SPAN		10' SPAN			
		SIZE	QTY.	SIZE	QTY.	SIZE	QTY.	SIZE	QTY.	SIZE	QTY.	SIZE	QTY.	LENGTH	
CH	STR	#4	4	#4	4	#4	4	#4	4	#4	4	#4	4	13'-8"	
CL1	BNT	#4	6	#4	7	#4	8	#4	9	#4	12	#4	14	4'-4"	
CL2	BNT	#4	6	#4	7	#4	8	#4	9	#4	12	#4	14	4'-3"	
HD	STR	#6	2	#6	2	#6	2	#6	2	#6	2	#8	2	13'-8"	

APPROVED BY BRIDGE ENGINEER *Scott Luedtke* DATE 4/2/10

**OKLAHOMA DEPT. OF TRANSPORTATION**  
**BRIDGE STANDARD (ENGLISH)**  
 RCB CULVERTS - END SECTION DETAILS  
 SINGLE CELL - 3'-0" HEIGHT - 30°  
 SHEET NO. 3 OF 3

2009 SPECIFICATIONS | RCB-E1-H3-30-3 | 01E | B-665E