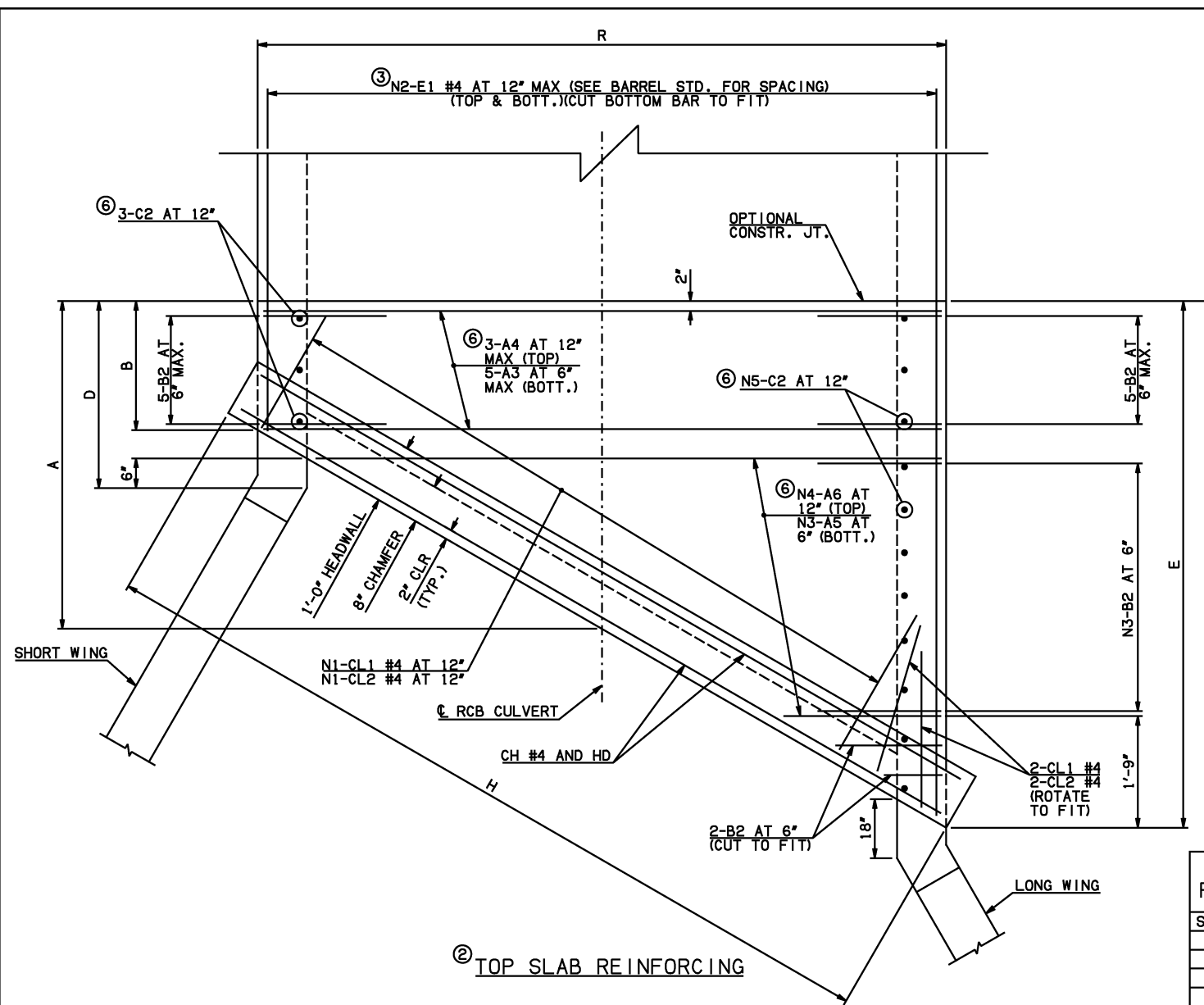
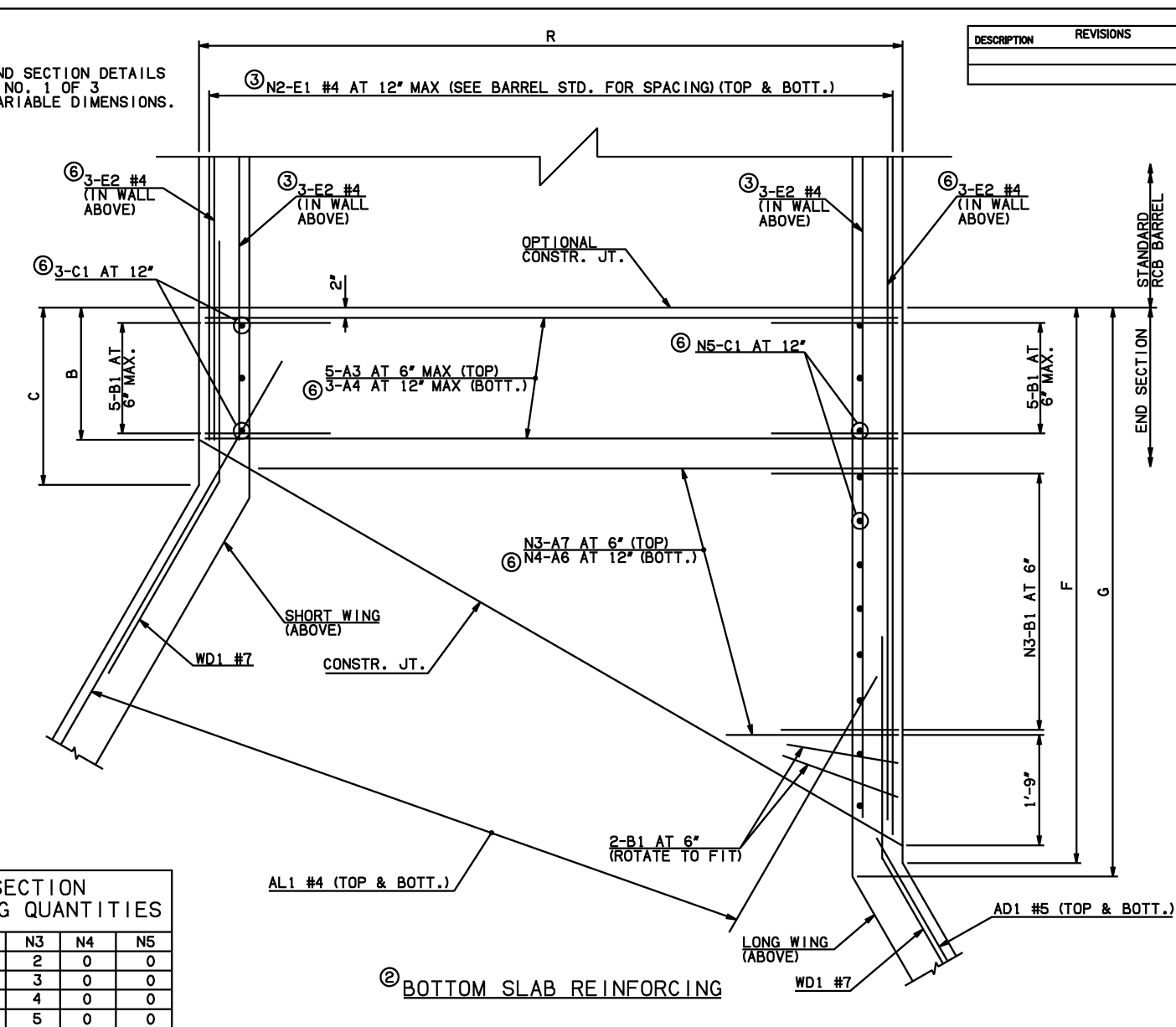


DESCRIPTION	REVISIONS	DATE



NOTE: SEE END SECTION DETAILS SHEET NO. 1 OF 3 FOR VARIABLE DIMENSIONS.



SPAN	N1	N2	N3	N4	N5
3'	4	9	2	0	0
4'	5	10	3	0	0
5'	6	11	4	0	0
6'	7	12	5	0	0
8'	10	14	8	0	0
10'	12	14	10	5	10

END CONNECTION BAR LIST

ONE END CONNECTION SHOWN

MARK	FORM	3' SPAN				4' SPAN				5' SPAN				6' SPAN				8' SPAN				10' SPAN			
		SIZE	QTY.	LENGTH	REMARKS	SIZE	QTY.	LENGTH	REMARKS	SIZE	QTY.	LENGTH	REMARKS	SIZE	QTY.	LENGTH	REMARKS	SIZE	QTY.	LENGTH	REMARKS	SIZE	QTY.	LENGTH	REMARKS
A3	STR	#5	10	3'-10"		#5	10	4'-10"		#6	10	5'-8"		#6	10	6'-10"		#7	10	9'-4"		#7	10	11'-4"	
A4	STR		0				0				0				0				0			#4	6	11'-4"	
A5	STR	#5	2	1'-9 1/2" AVG.	1'-4" TO 2'-3"	#5	3	2'-2 1/2" AVG.	1'-4" TO 3'-1"	#6	4	2'-7 1/2" AVG.	1'-4" TO 3'-11"	#6	5	3'-1" AVG.	1'-4" TO 4'-10"	#7	8	4'-4 1/2" AVG.	1'-4" TO 7'-5"	#7	10	5'-3" AVG.	1'-4" TO 9'-2"
A6	STR		0				0				0				0				0			#4	10	5'-11 1/2" AVG.	2'-6" TO 9'-5"
A7	STR	#5	2	2'-11" AVG.	2'-6" TO 3'-4"	#5	3	3'-4 1/2" AVG.	2'-6" TO 4'-3"	#6	4	3'-9 1/2" AVG.	2'-6" TO 5'-1"	#6	5	4'-2 1/2" AVG.	2'-6" TO 5'-11"	#7	8	5'-6 1/2" AVG.	2'-6" TO 8'-7"	#7	10	6'-4 1/2" AVG.	2'-6" TO 10'-3"
B1	BNT	#4	14	2'-5"		#4	15	2'-6"		#4	16	2'-7"		#4	17	2'-7"		#4	20	2'-10"		#5	22	4'-7"	
B2	BNT	#4	14	4'-1"		#4	15	4'-2"		#4	16	4'-3"		#4	17	4'-3"		#4	20	4'-6"		#5	22	5'-11"	
C1	STR		0				0				0				0				0			#4	13	2'-2"	
C2	STR		0				0				0				0				0			#4	13	3'-10"	
E1	STR	#4	18	3'-9" AVG.	2'-8" TO 4'-10"	#4	20	3'-9" AVG.	2'-4" TO 5'-2"	#4	22	3'-9 1/2" AVG.	2'-2" TO 5'-5"	#4	24	4'-9 1/2" AVG.	2'-10" TO 6'-9"	#4	28	4'-9 1/2" AVG.	2'-1" TO 7'-6"	#4	56	5'-9" AVG.	2'-6" TO 9'-0"
E2	STR	#4	6	3'-8 1/2" AVG.	2'-8" AND 4'-9"	#4	6	3'-8" AVG.	2'-4" AND 5'-0"	#4	6	3'-9" AVG.	2'-2" AND 5'-4"	#4	6	4'-8 1/2" AVG.	2'-10" AND 6'-7"	#4	6	4'-7 1/2" AVG.	2'-1" AND 7'-2"	#4	12	5'-7 1/2" AVG.	2'-6" AND 8'-9"

ITEM	UNIT	3' SPAN	4' SPAN	5' SPAN	6' SPAN	8' SPAN	10' SPAN
CLASS AA CONCRETE	CY	10.90	11.80	12.40	13.80	16.50	19.50
REINFORCING STEEL	LB	1830.00	1900.00	2020.00	2140.00	2490.00	3170.00

NOTE: QUANTITIES ABOVE ARE FOR ONE END SECTION, WHICH IS COMPRISED OF ONE END CONNECTION, ONE HEADWALL, ONE APRON, AND TWO WINGWALLS.

- NOTES: ① QUANTITY SHOWN REPRESENTS TWO SETS.
 ② FOR FURTHER INFORMATION REGARDING END SECTION BARS A, B, C, E1, AND E2, REFER TO RCB CULVERT - BARREL DETAILS.
 ③ LENGTHS OF E1 & E2 BARS SHOWN ARE ADDITIONAL LENGTHS REQUIRED FOR THE END SECTION. LAP SPLICES, AS REQUIRED, SHALL BE IN ACCORDANCE WITH RCB BARREL STANDARD NOTES.
 ④ FOR 10' SPAN 4-SETS OF N2-E1 BARS REQUIRED. FOR SPANS 8' AND SHORTER, 2-SETS OF N2-E1 BARS REQUIRED.
 ⑤ QUANTITY SHOWN REPRESENTS 2-SETS OF E2 BARS WITH LENGTHS AS SHOWN CORRESPONDING TO SHORT EXTERIOR WALL AND LONG EXTERIOR WALL.
 ⑥ 10' SPAN ONLY.

APPROVED BY BRIDGE ENGINEER *Scott Luedtke* DATE 4/2/10

OKLAHOMA DEPT. OF TRANSPORTATION
BRIDGE STANDARD (ENGLISH)
 RCB CULVERTS - END SECTION DETAILS
 SINGLE CELL - 3'-0" HEIGHT - 30"
 SHEET NO. 2 OF 3

2009 SPECIFICATIONS | RCB-E1-H3-30-2 | 01E | B-664E