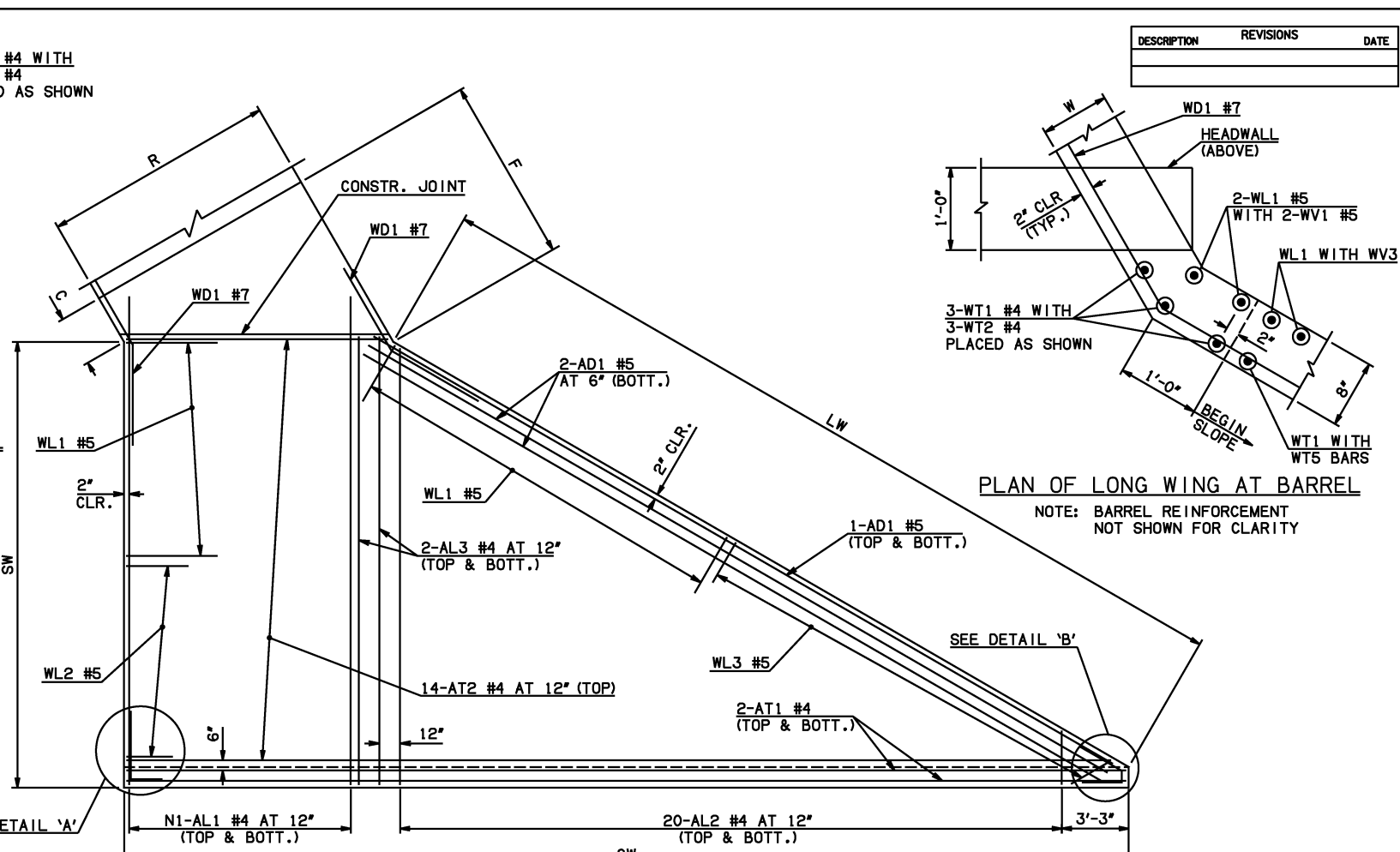
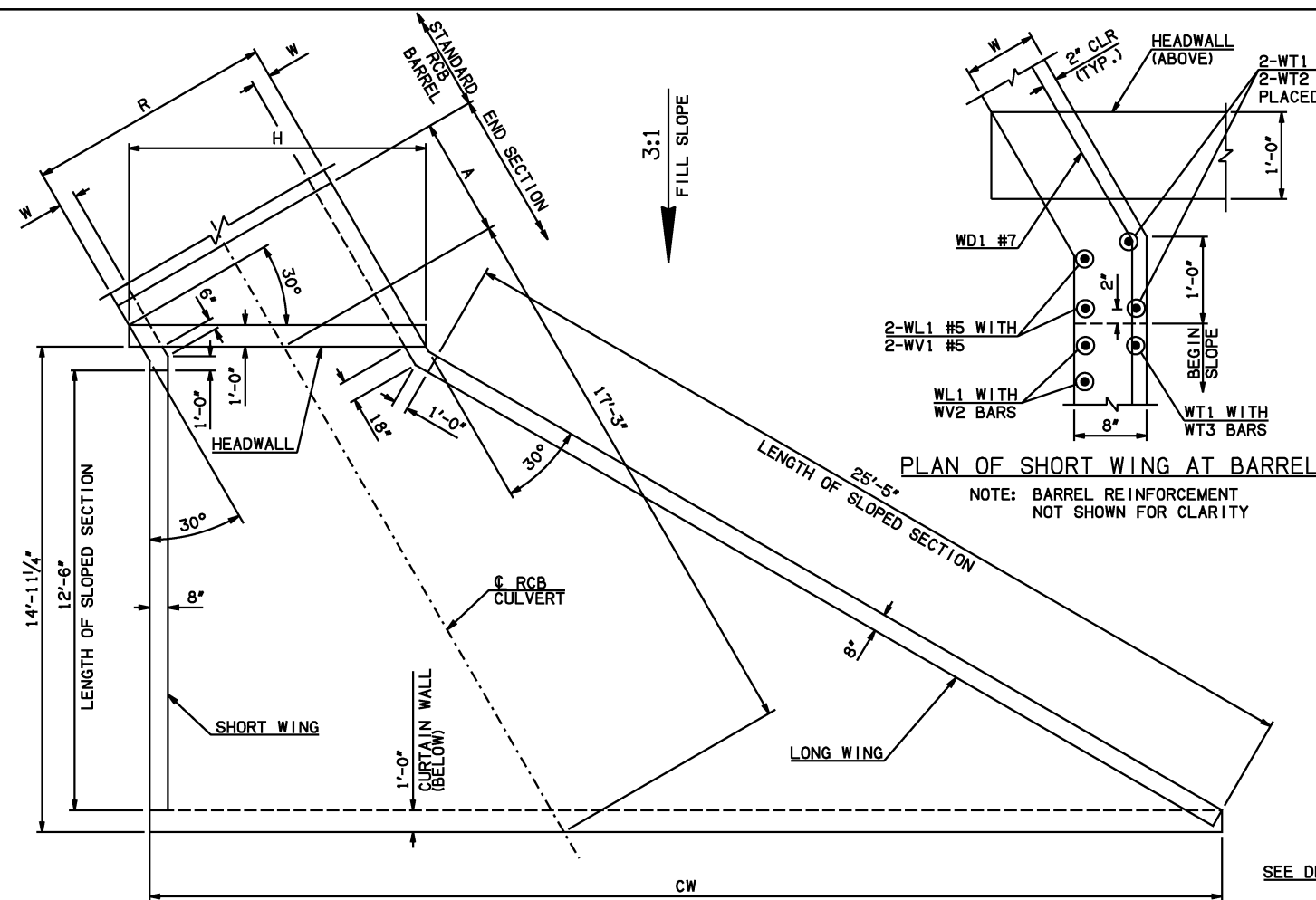


DESCRIPTION	REVISIONS	DATE



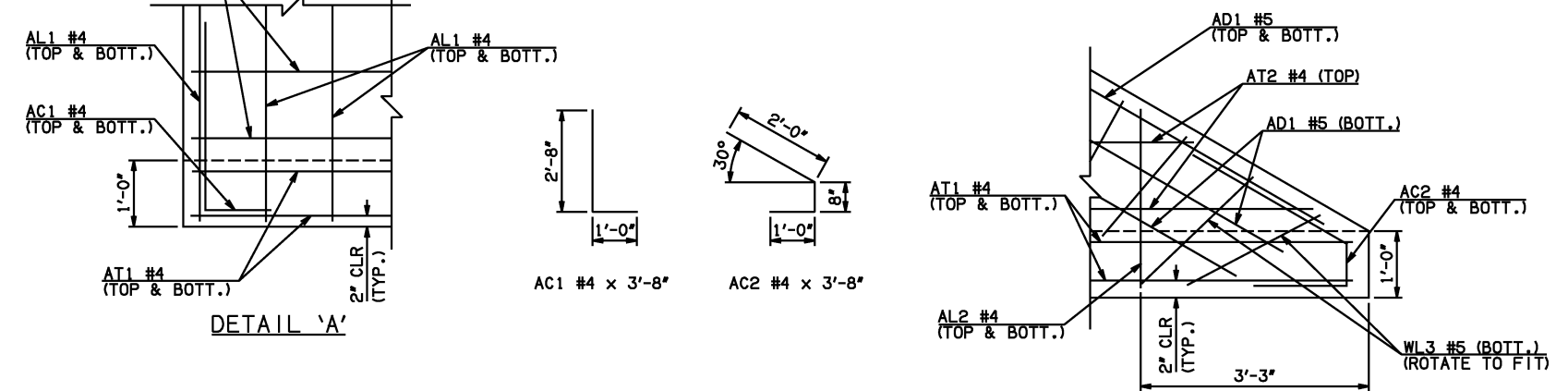
END SECTION PLAN

NOTE: SEE END SECTION DETAILS SHEET NO. 2 OF 3 FOR VARIABLE REINFORCING QUANTITIES.

END SECTION VARIABLE DIMENSIONS

SPAN	W	A	B	C	CW	D	E	F	G	H	LW	R	SW
3'	7'	4'-0"	2'-9 1/2"	3'-3 3/4"	27'-10 1/4"	3'-7 1/2"	5'-2 1/2"	6'-0 1/2"	6'-4 1/2"	5'-4 3/4"	26'-5"	4'-2"	14'-5 3/4"
4'	7'	4'-0"	2'-6"	3'-0 1/4"	29'-0"	3'-4 1/4"	5'-6"	6'-4"	6'-7 3/4"	6'-6 1/2"	26'-5"	5'-2"	14'-5 3/4"
5'	6'	4'-0"	2'-3 1/4"	2'-7"	30'-1 3/4"	3'-0 3/4"	5'-8 3/4"	6'-5 3/4"	6'-11 1/4"	7'-6"	26'-7"	6'-0"	14'-7 3/4"
6'	7'	5'-0"	2'-11 1/4"	3'-5 1/4"	31'-3 3/4"	3'-9 1/4"	7'-0 3/4"	7'-11"	8'-2 3/4"	8'-10 1/4"	26'-5"	7'-2"	14'-5 3/4"
8'	10'	5'-0"	2'-2 1/2"	3'-3 1/2"	33'-7 1/2"	3'-2 1/4"	7'-9 1/2"	8'-11"	8'-9 3/4"	11'-8 3/4"	25'-11"	9'-8"	13'-11 3/4"
10'	10'	6'-0"	2'-7 1/2"	3'-8 3/4"	35'-11 1/4"	3'-7 1/4"	9'-4 1/2"	10'-6"	10'-4 3/4"	14'-0 1/2"	25'-11"	11'-8"	13'-11 3/4"

APRON REINFORCING



DETAIL 'A'

DETAIL 'B'

APRON BAR LIST

MARK	SIZE	FORM	ONE APRON SHOWN																	
			3' SPAN			4' SPAN			5' SPAN			6' SPAN			8' SPAN			10' SPAN		
QTY.	LENGTH	REMARKS	QTY.	LENGTH	REMARKS	QTY.	LENGTH	REMARKS	QTY.	LENGTH	REMARKS	QTY.	LENGTH	REMARKS	QTY.	LENGTH	REMARKS	QTY.	LENGTH	REMARKS
AC1	#4	BNT	2	3'-8"		2	3'-8"		2	3'-8"		2	3'-8"		2	3'-8"		2	3'-8"	
AC2	#4	BNT	2	3'-8"		2	3'-8"		2	3'-8"		2	3'-8"		2	3'-8"		2	3'-8"	
AD1	#5	STR	4	27'-6"		4	27'-6"		4	27'-6"		4	27'-6"		4	27'-6"		4	27'-6"	
AL1	#4	STR	8	16'-9"		10	16'-9"		12	16'-9"		14	16'-9"		20	16'-9"		24	16'-9"	
AL2	#4	STR	40	7'-11 1/2" AVG.	2'-6" TO 13'-5"	40	7'-11 1/2" AVG.	2'-6" TO 13'-5"	40	7'-11 1/2" AVG.	2'-6" TO 13'-5"	40	7'-11 1/2" AVG.	2'-6" TO 13'-5"	40	7'-11 1/2" AVG.	2'-6" TO 13'-5"	40	7'-11 1/2" AVG.	2'-6" TO 13'-5"
AL3	#4	STR	4	14'-9"		4	14'-9"		4	14'-9"		4	14'-9"		4	14'-9"		4	14'-9"	
AT1	#4	STR	4	27'-6"		4	28'-8"		4	29'-9"		4	30'-11"		4	33'-3"		4	35'-7"	
AT2	#4	STR	14	15'-6" AVG.	4'-3" TO 26'-9"	14	16'-7 1/2" AVG.	5'-4" TO 27'-11"	14	17'-9" AVG.	6'-6" TO 29'-0"	14	18'-11" AVG.	7'-8" TO 30'-2"	14	21'-3" AVG.	10'-0" TO 32'-6"	14	23'-7" AVG.	12'-4" TO 34'-10"

① QUANTITY SHOWN REPRESENTS TWO SETS.

APPROVED BY BRIDGE ENGINEER *Scott Lueders* DATE 4/2/10

**OKLAHOMA DEPT. OF TRANSPORTATION**  
**BRIDGE STANDARD (ENGLISH)**  
 RCB CULVERTS - END SECTION DETAILS  
 SINGLE CELL - 3'-0" HEIGHT - 30°  
 SHEET NO. 1 OF 3

2009 SPECIFICATIONS | RCB-E1-H3-30-1 | 01E | B-663E