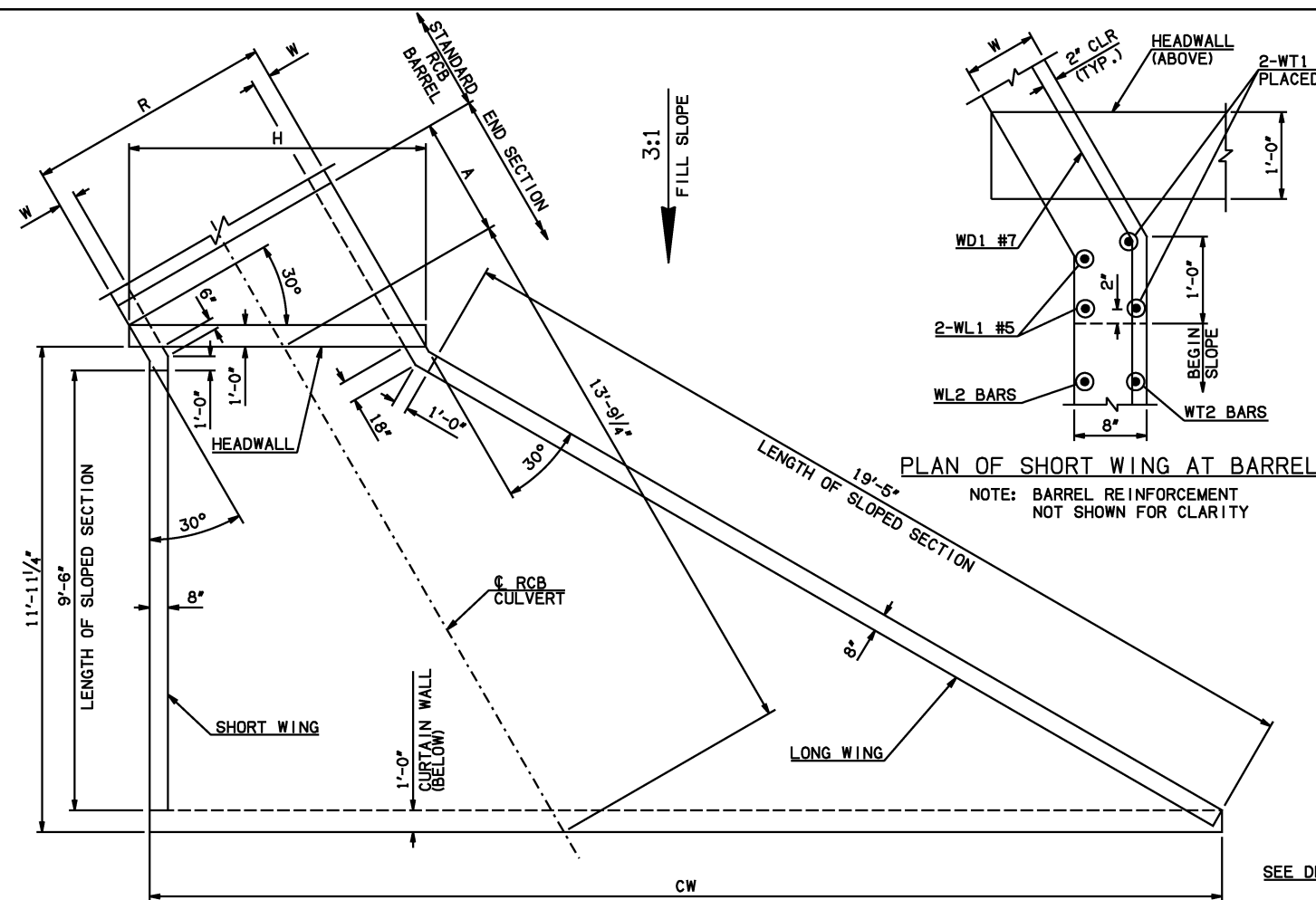


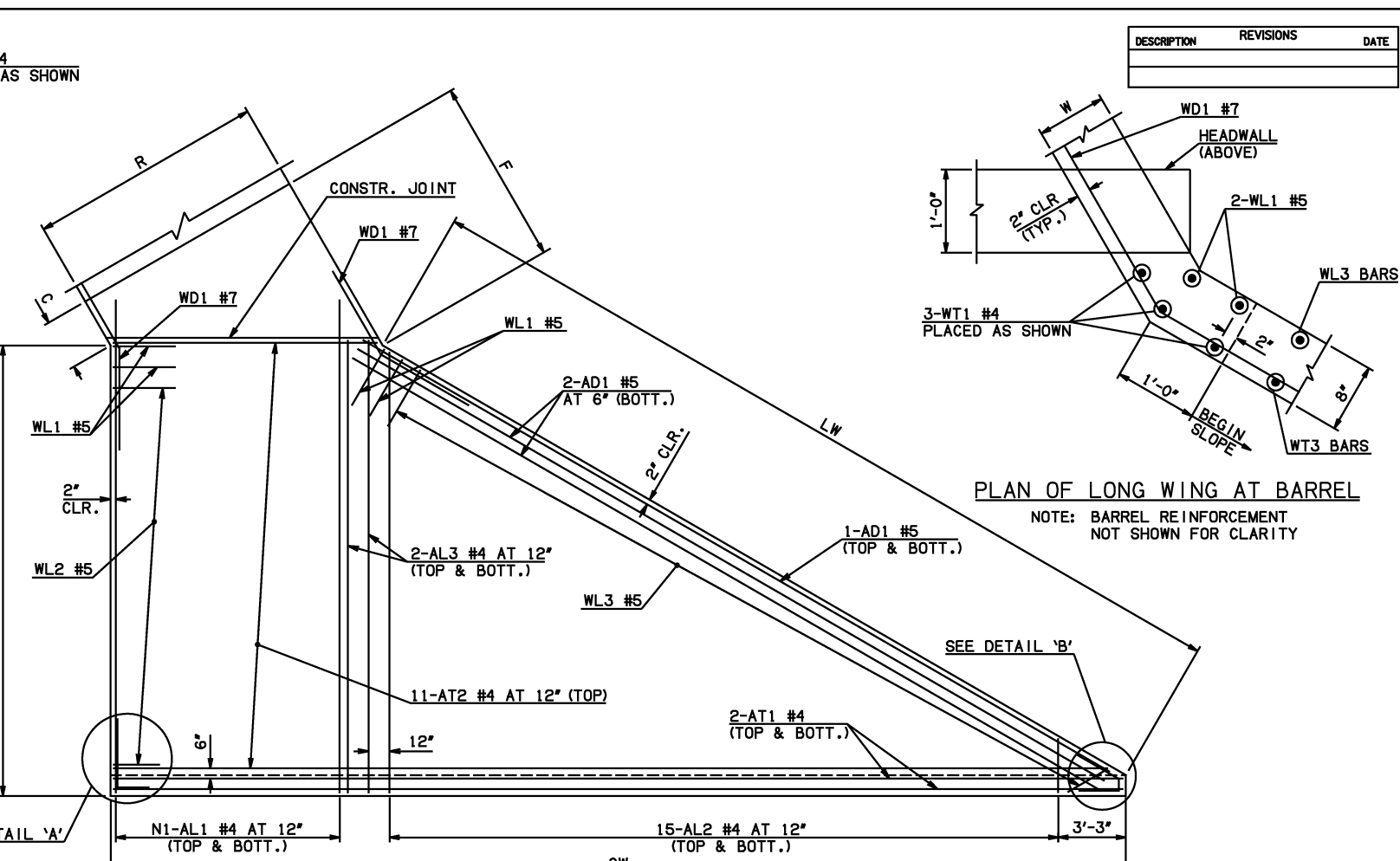
DESCRIPTION	REVISIONS	DATE



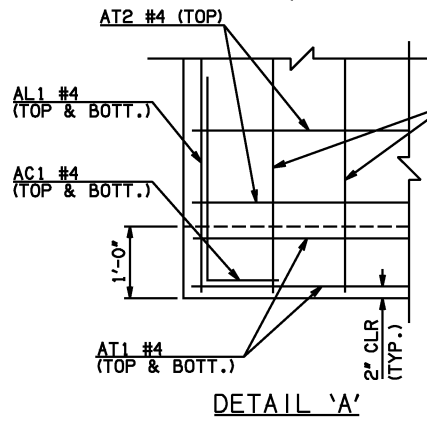
END SECTION PLAN

NOTE: SEE END SECTION DETAILS SHEET NO. 2 OF 3 FOR VARIABLE REINFORCING QUANTITIES.

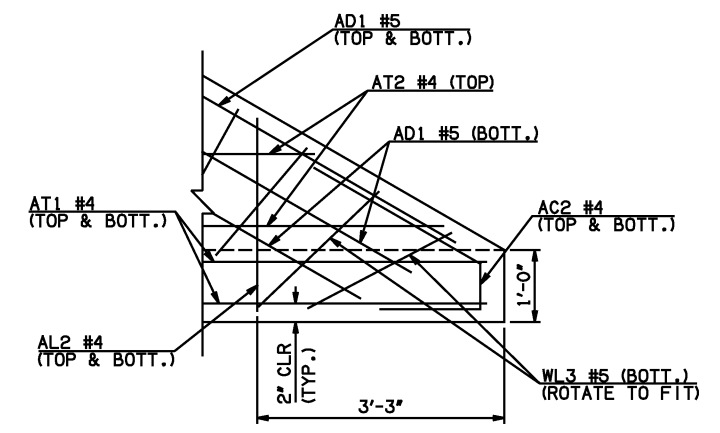
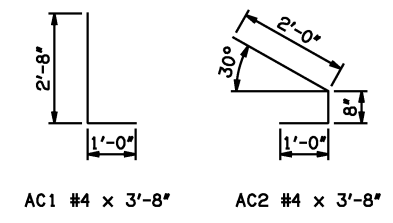
END SECTION VARIABLE DIMENSIONS													
SPAN	W	A	B	C	CW	D	E	F	G	H	LW	R	SW
3'	6"	4'-0"	2'-10 ¹ / ₄ "	3'-2"	22'-7 ³ / ₄ "	3'-7 ¹ / ₂ "	5'-1 ³ / ₄ "	5'-10 ³ / ₄ "	6'-4 ¹ / ₂ "	5'-2 ¹ / ₄ "	20'-7"	4'-0"	11'-7 ³ / ₄ "
4'	7"	4'-0"	2'-6"	3'-0 ¹ / ₄ "	23'-9 ³ / ₄ "	3'-4 ¹ / ₄ "	5'-6"	6'-4"	6'-7 ³ / ₄ "	6'-6 ¹ / ₂ "	20'-5"	5'-2"	11'-5 ³ / ₄ "
5'	6"	4'-0"	2'-3 ¹ / ₄ "	2'-7"	24'-11 ¹ / ₂ "	3'-0 ³ / ₄ "	5'-8 ³ / ₄ "	6'-5 ³ / ₄ "	6'-11 ¹ / ₄ "	7'-6"	20'-7"	6'-0"	11'-7 ³ / ₄ "



APRON REINFORCING



DETAIL 'A'



DETAIL 'B'

① QUANTITY SHOWN REPRESENTS TWO SETS.

APRON AND HEADWALL BAR LIST											
MARK	SIZE	FORM	ONE APRON AND ONE HEADWALL SHOWN								
			3' SPAN		4' SPAN		5' SPAN				
QTY.	LENGTH	REMARKS	QTY.	LENGTH	REMARKS	QTY.	LENGTH	REMARKS			
AC1	#4	BNT	2	3'-8"		2	3'-8"		2	3'-8"	
AC2	#4	BNT	2	3'-8"		2	3'-8"		2	3'-8"	
AD1	#5	STR	4	21'-6"		4	21'-6"		4	21'-6"	
AL1	#4	STR	6	13'-9"		10	13'-9"		12	13'-9"	
AL2	#4	STR	30	6'-6 ¹ / ₂ " AVG.	2'-6" TO 10'-7"	30	6'-6 ¹ / ₂ " AVG.	2'-6" TO 10'-7"	30	6'-6 ¹ / ₂ " AVG.	2'-6" TO 10'-7"
AT1	#4	STR	4	22'-3"		4	23'-5"		4	24'-7"	
AT2	#4	STR	11	12'-10 ¹ / ₂ " AVG.	4'-3" TO 21'-6"	11	14'-0" AVG.	5'-4" TO 22'-8"	11	15'-2" AVG.	6'-6" TO 23'-10"
CH	#4	STR	4	4'-10"		4	6'-2"		4	7'-2"	
CL1	#4	BNT	5	4'-4"		7	4'-4"		8	4'-4"	
CL2	#4	BNT	5	4'-3"		7	4'-3"		8	4'-3"	
HD	#6	STR	2	4'-10"		2	6'-2"		2	7'-2"	

APPROVED BY BRIDGE ENGINEER *Scott J. Smith* DATE 4/2/10

OKLAHOMA DEPT. OF TRANSPORTATION
BRIDGE STANDARD (ENGLISH)
RCB CULVERTS - END SECTION DETAILS
SINGLE CELL - 2'-0" HEIGHT - 30°
SHEET NO. 1 OF 3

2009 SPECIFICATIONS RCB-E1-H2-30-1 01E
B-660E