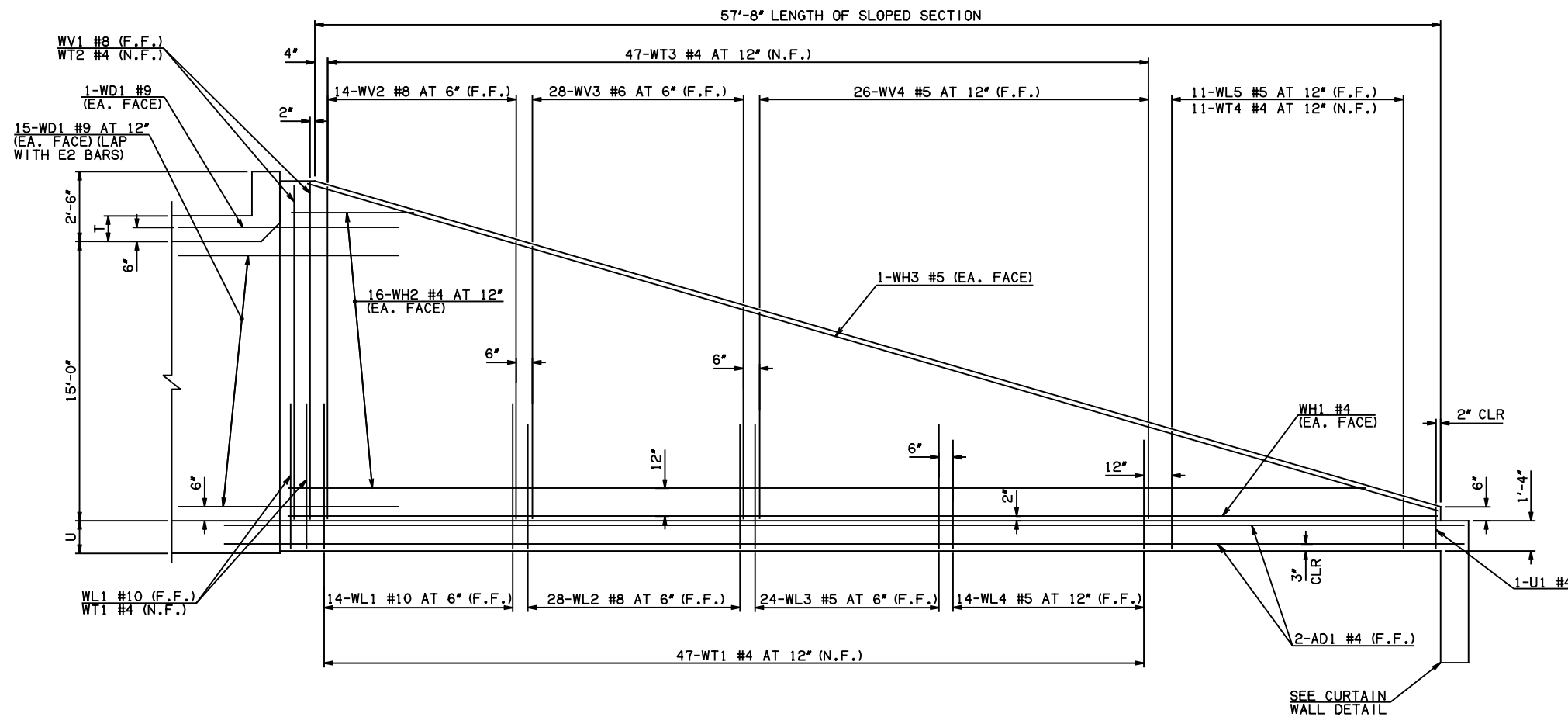
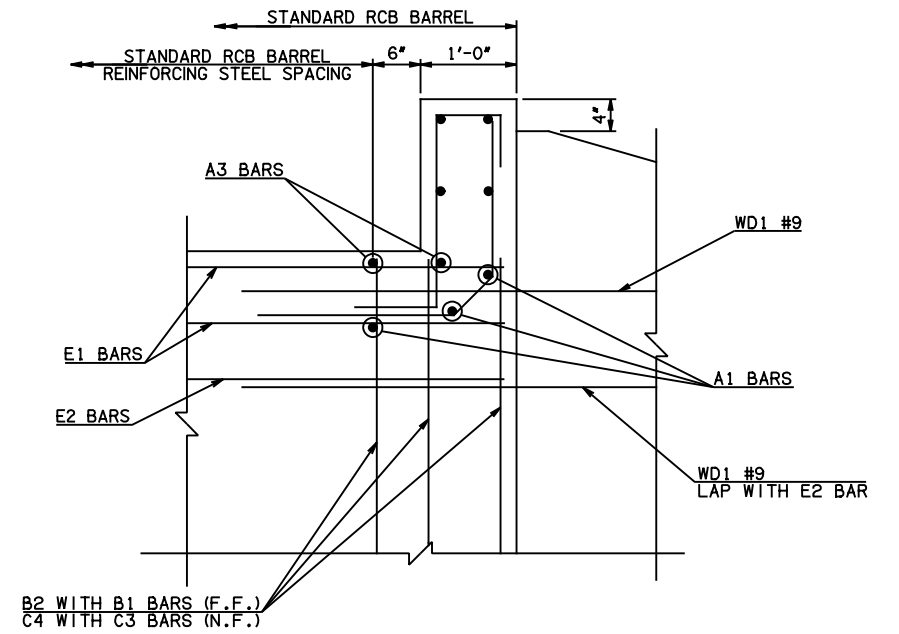


DESCRIPTION	REVISIONS	DATE

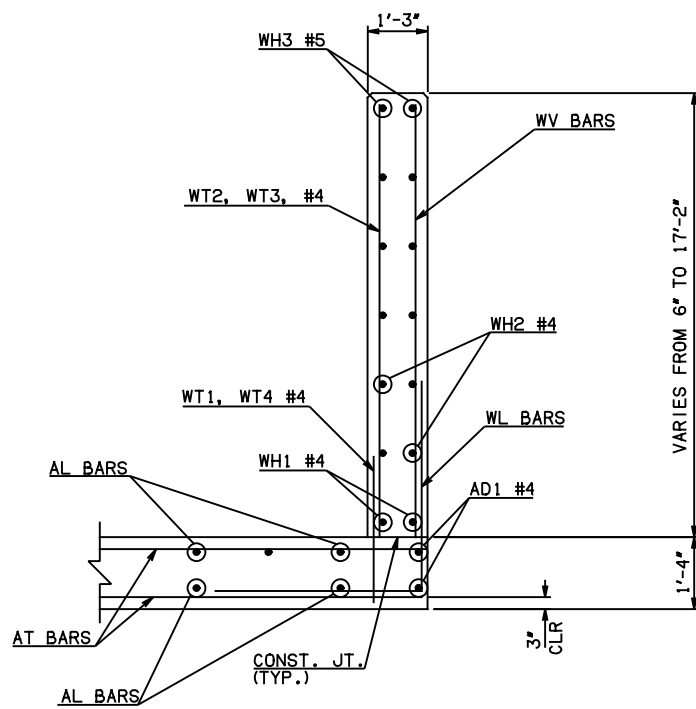


NOTE: F.F. = FAR FACE
N.F. = NEAR FACE

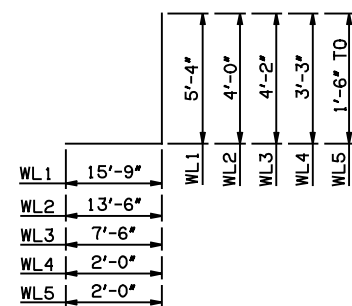
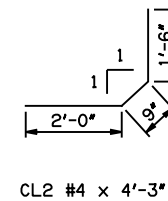
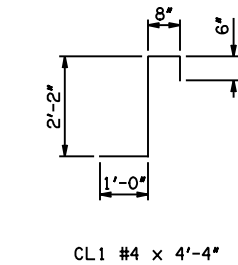
WING ELEVATION



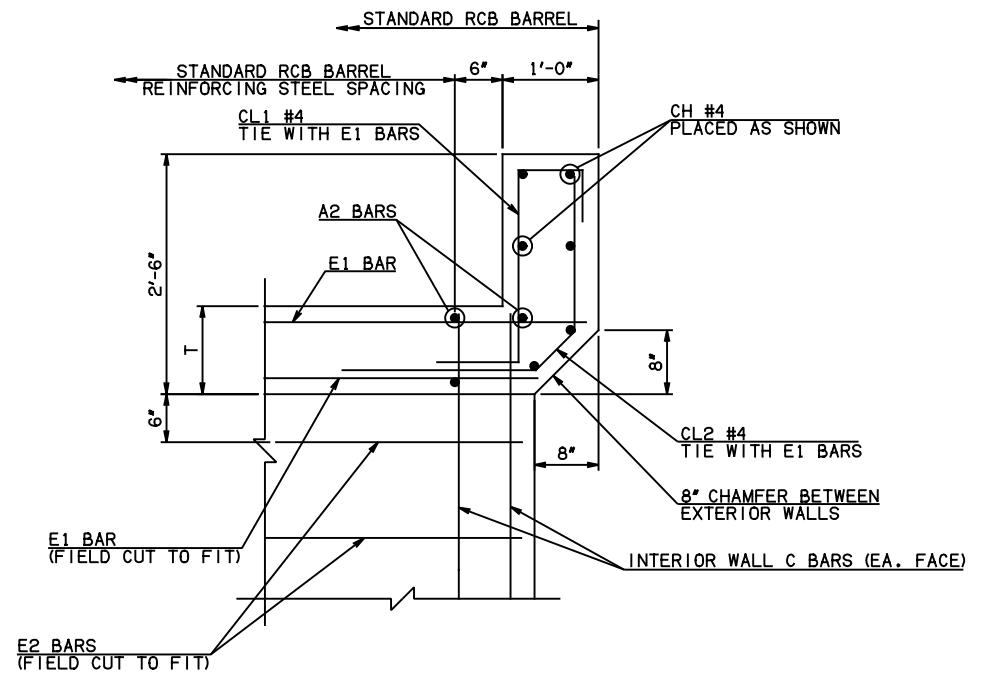
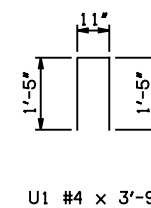
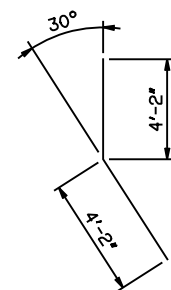
HEADWALL DETAIL AT EXTERIOR WALL



TYPICAL SECTION THRU WING



WL1 #10 x 21'-1"
WL2 #8 x 17'-6"
WL3 #5 x 11'-8"
WL4 #5 x 5'-3"
WL5 #5 x 4'-11" AVG.



HEADWALL DETAIL AT INTERIOR WALL

APPROVED BY BRIDGE ENGINEER <i>Scott J. Smith</i>	DATE 4/2/10
OKLAHOMA DEPT. OF TRANSPORTATION BRIDGE STANDARD (ENGLISH) RCB CULVERTS - END SECTION DETAILS TRIPLE CELL - 15'-0" HEIGHT - 0° SHEET NO. 2 OF 2	
2009 SPECIFICATIONS	RCB-E3-H15-0-2 01E B-649E