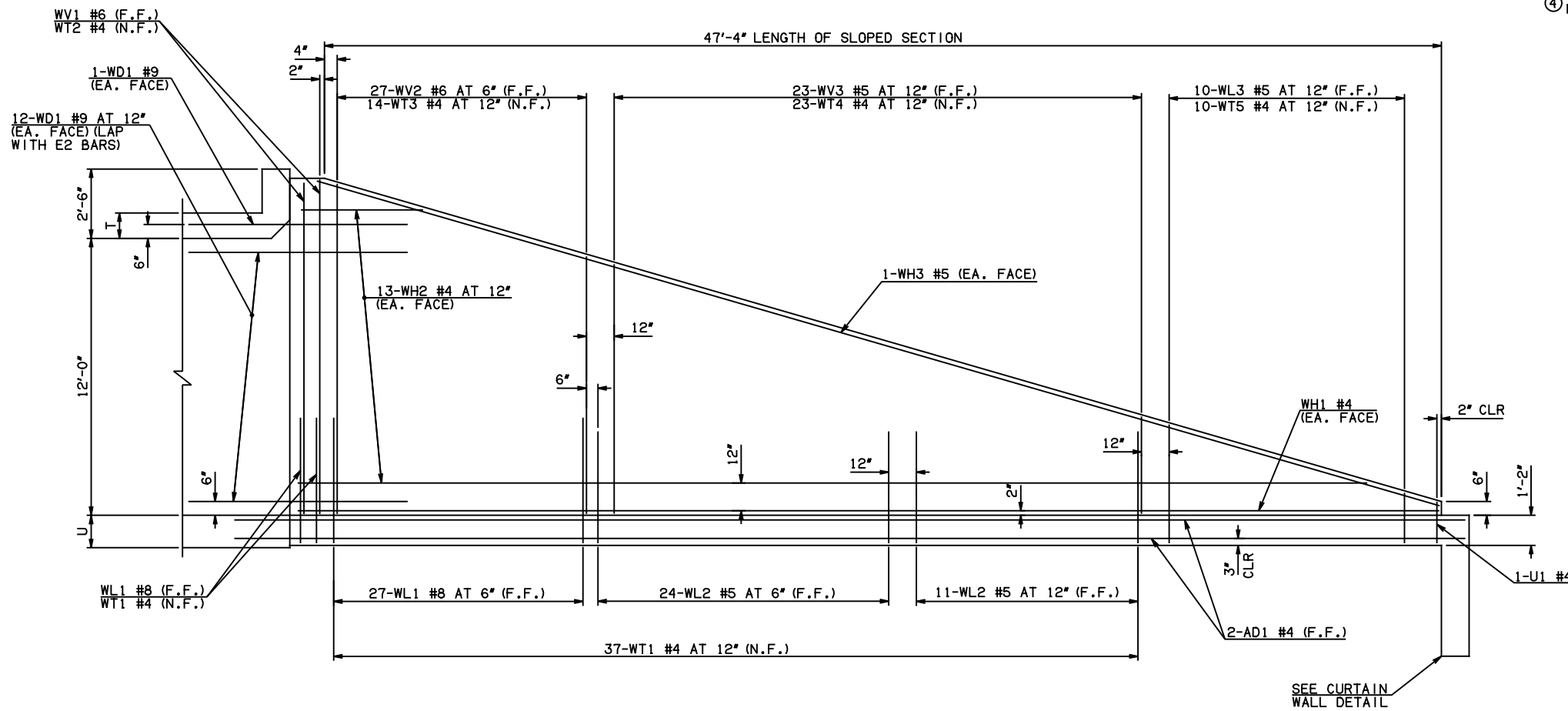


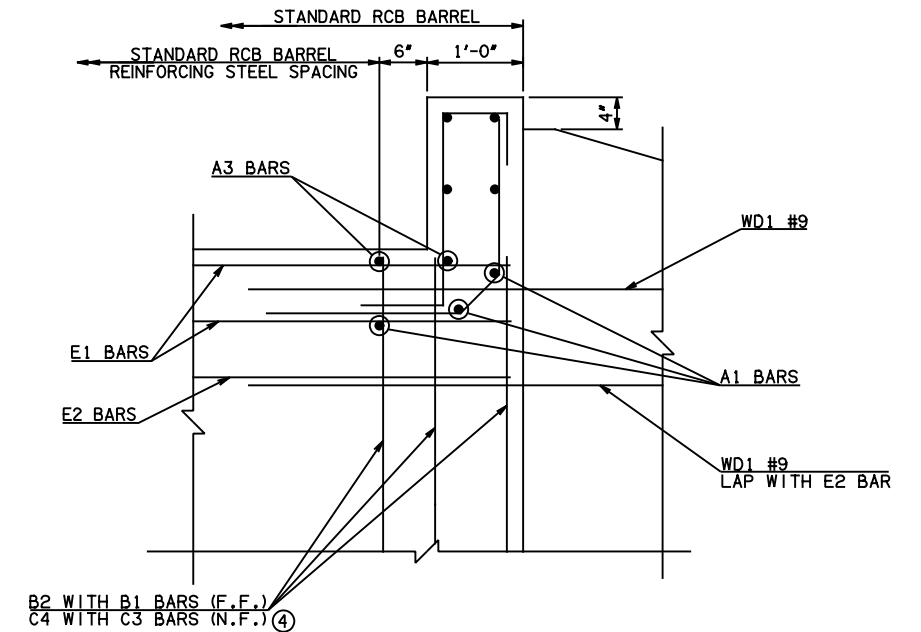
DESCRIPTION	REVISIONS	DATE



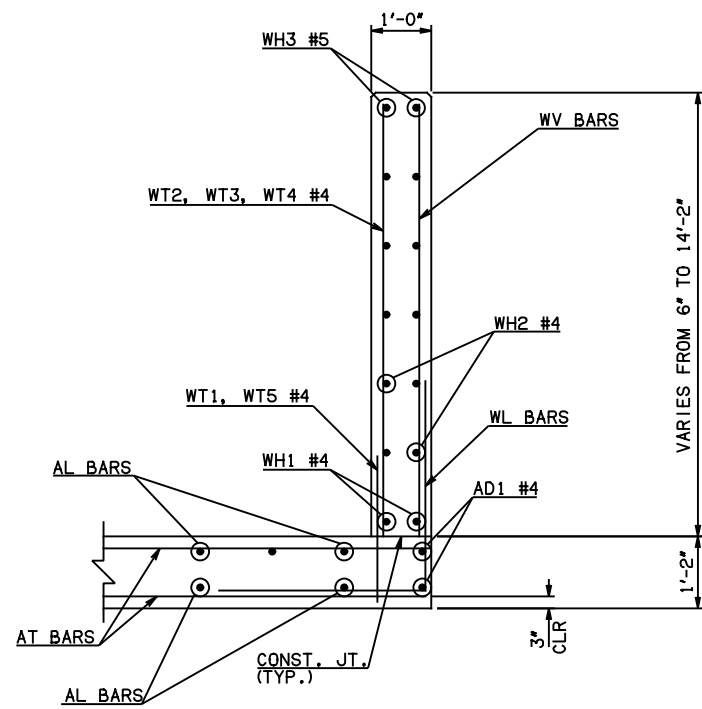
NOTE: F.F. = FAR FACE  
N.F. = NEAR FACE

WING ELEVATION

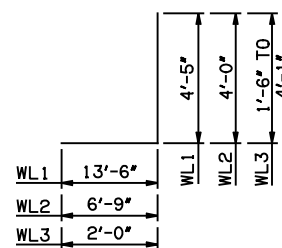
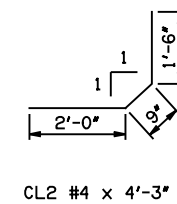
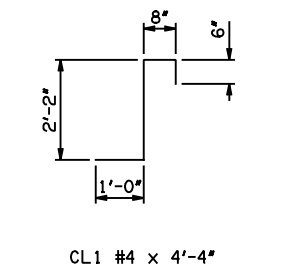
④ NOTE: TO CONSTRUCT ONE END SECTION AS SHOWN, THE FOLLOWING BARS ARE REQUIRED IN ADDITION TO THOSE CALLED IN THE RCB BARREL STANDARD:  
2-C3 BARS  
2-C4 BARS  
ADDITIONAL WEIGHT IS INCLUDED IN QUANTITIES.



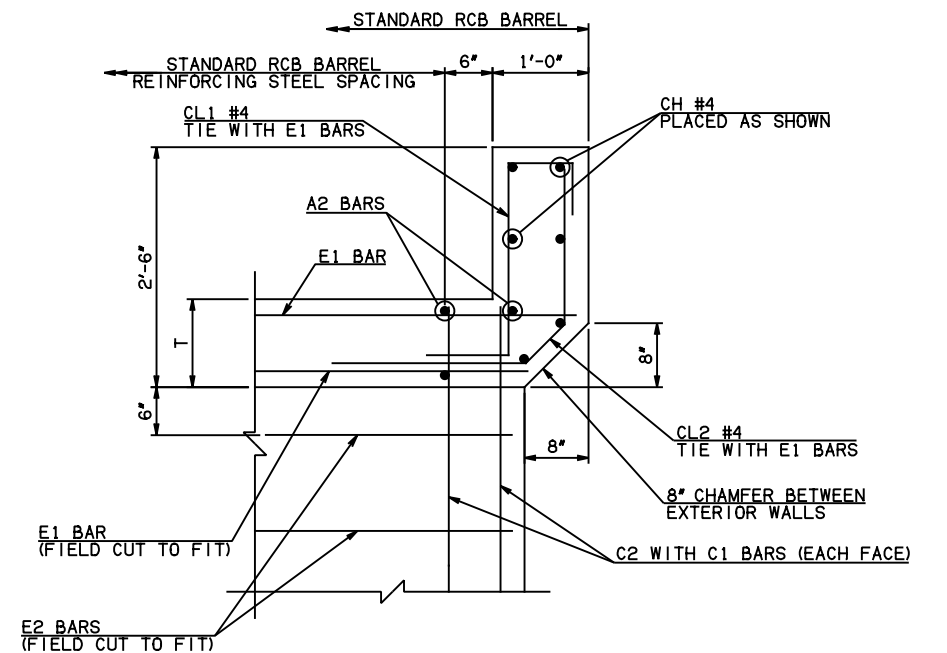
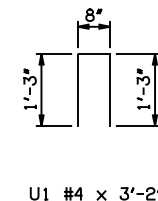
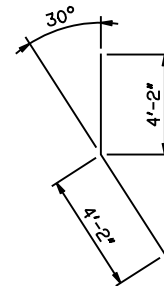
HEADWALL DETAIL AT EXTERIOR WALL



TYPICAL SECTION THRU WING



WL1 #8 x 17'-11"  
WL2 #5 x 10'-9"  
WL3 #5 x 4'-9 1/2" AVG.



HEADWALL DETAIL AT INTERIOR WALL

APPROVED BY BRIDGE ENGINEER *Scott J. Smith* DATE 4/2/10

OKLAHOMA DEPT. OF TRANSPORTATION  
BRIDGE STANDARD (ENGLISH)  
RCB CULVERTS - END SECTION DETAILS  
TRIPLE CELL - 12'-0" HEIGHT - 0°  
SHEET NO. 2 OF 2