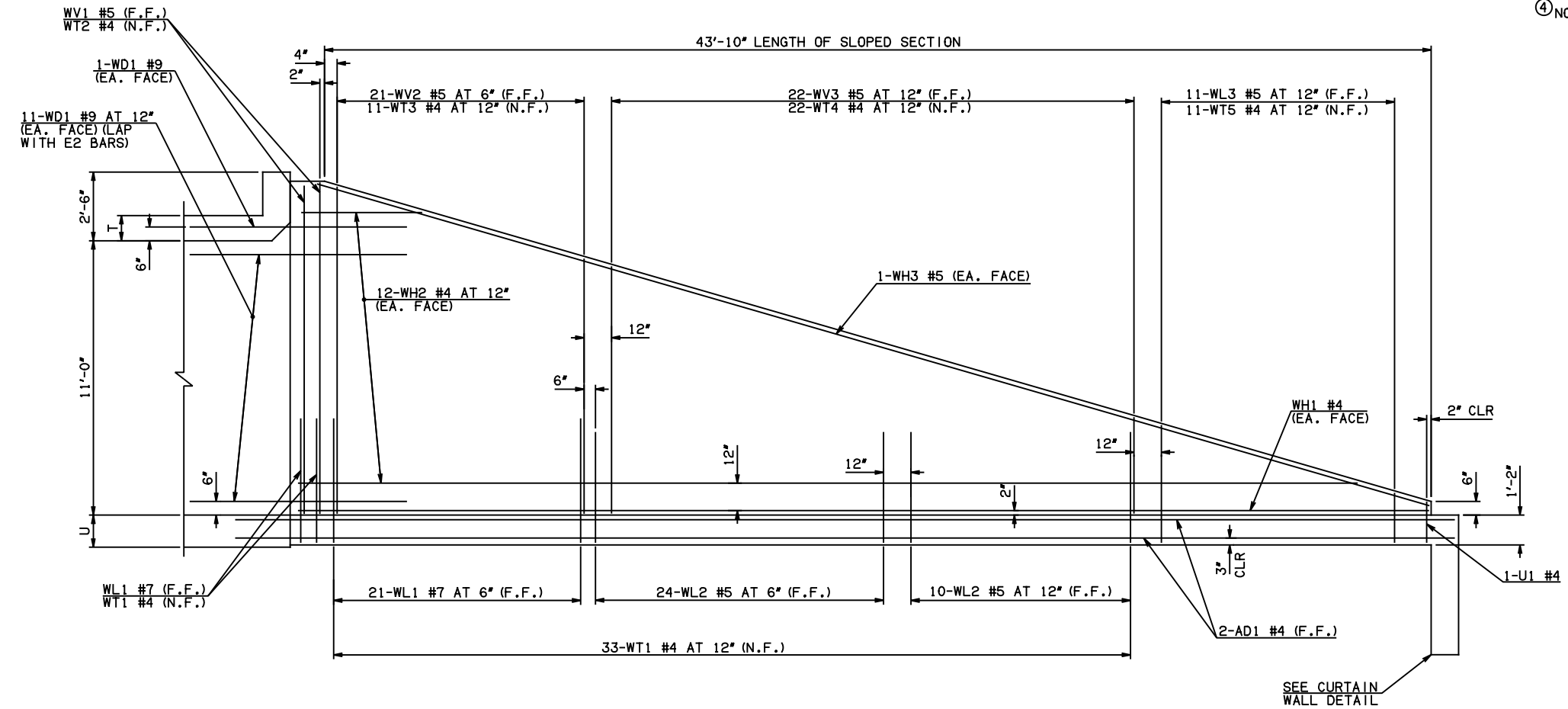


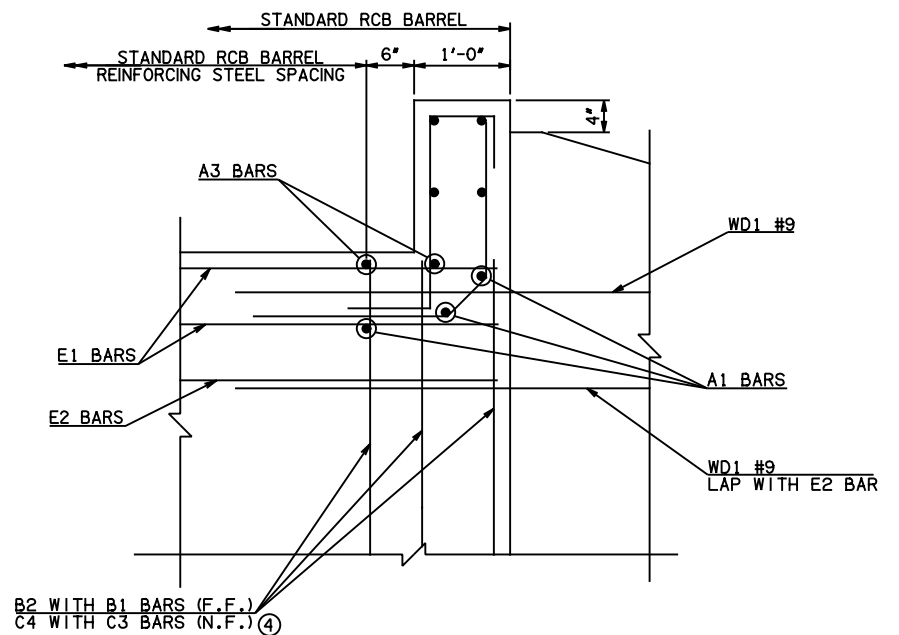
| DESCRIPTION | REVISIONS | DATE |
|-------------|-----------|------|
| | | |

④ NOTE: TO CONSTRUCT ONE END SECTION AS SHOWN, THE FOLLOWING BARS ARE REQUIRED IN ADDITION TO THOSE CALLED IN THE RCB BARREL STANDARD:
 2-C3 BARS
 2-C4 BARS
 ADDITIONAL WEIGHT IS INCLUDED IN QUANTITIES.

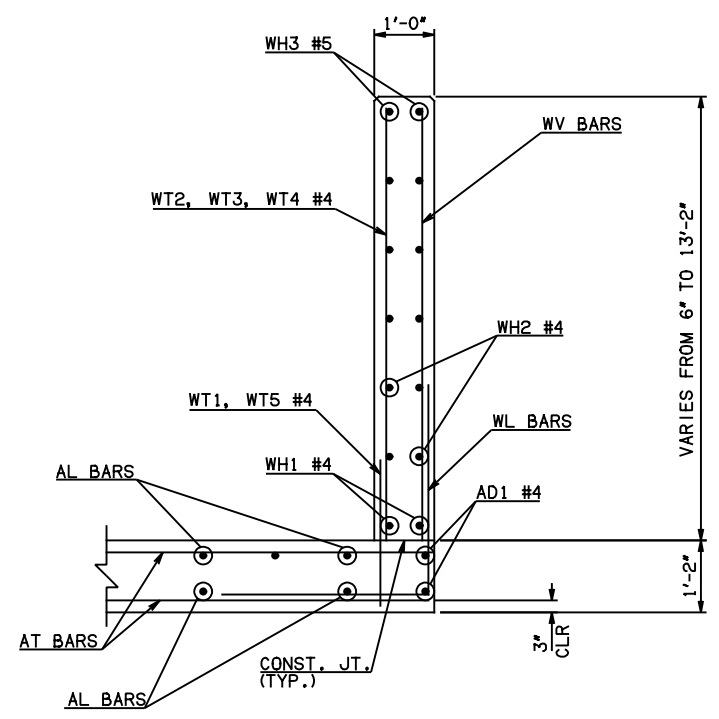


NOTE: F.F. = FAR FACE
 N.F. = NEAR FACE

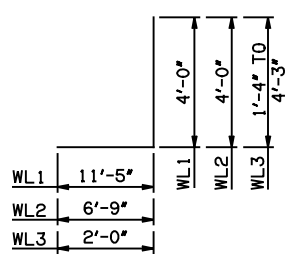
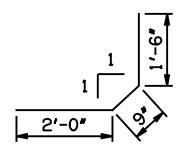
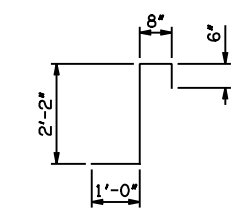
WING ELEVATION



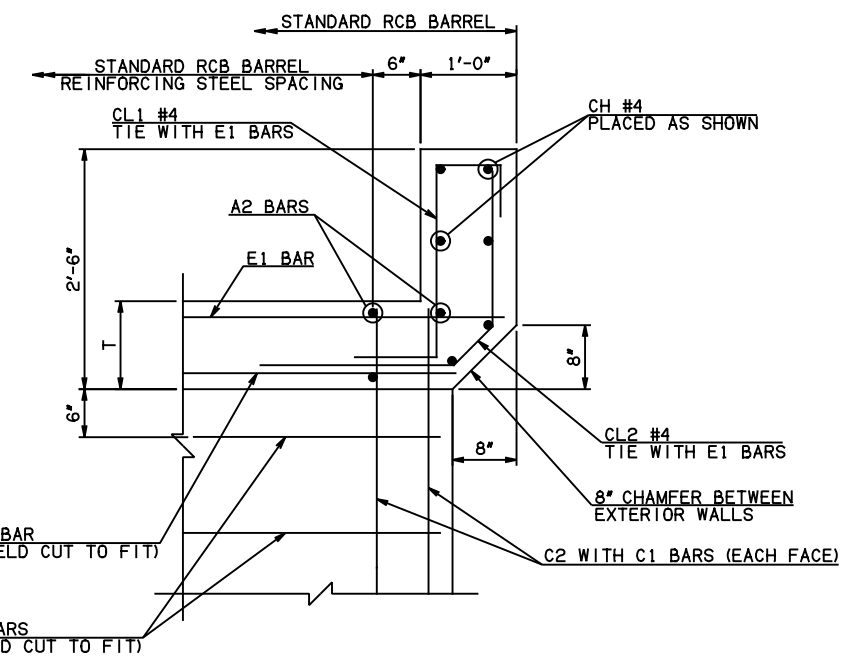
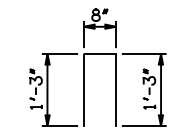
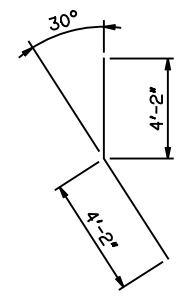
HEADWALL DETAIL AT EXTERIOR WALL



TYPICAL SECTION THRU WING



WL1 #7 x 15'-5"
 WL2 #5 x 10'-9"
 WL3 #5 x 4'-9 1/2" AVG.



HEADWALL DETAIL AT INTERIOR WALL

APPROVED BY BRIDGE ENGINEER *Scott J. Smith* DATE 4/2/10

OKLAHOMA DEPT. OF TRANSPORTATION
 BRIDGE STANDARD (ENGLISH)
 RCB CULVERTS - END SECTION DETAILS
 TRIPLE CELL - 11'-0" HEIGHT - 0°
 SHEET NO. 2 OF 2

2009 SPECIFICATIONS RCB-E3-H11-0-2 01E B-645E