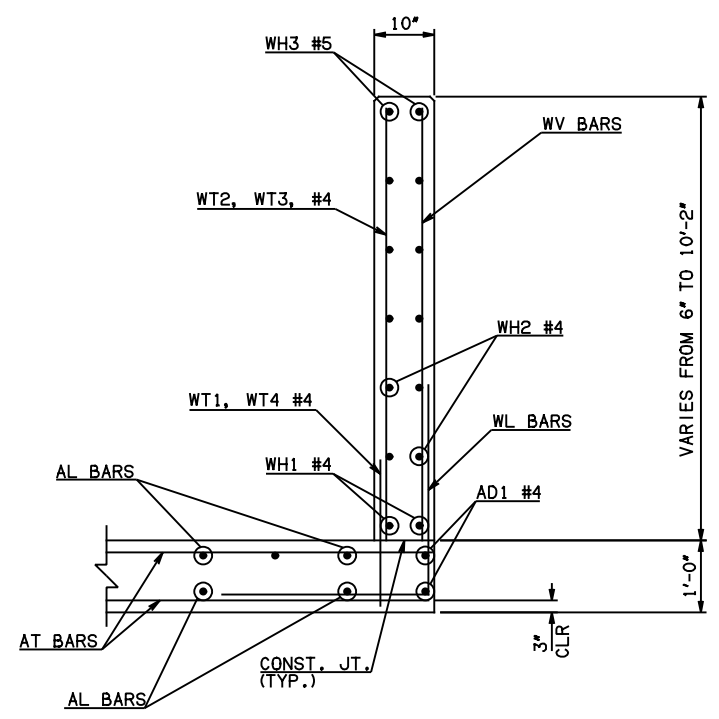
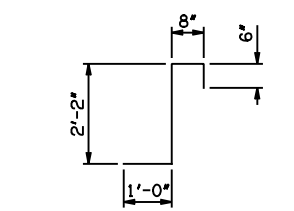


NOTE: F.F. = FAR FACE
N.F. = NEAR FACE

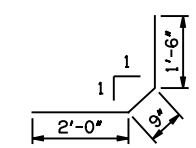
WING ELEVATION



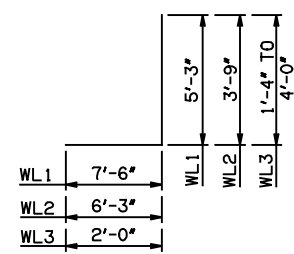
TYPICAL SECTION THRU WING



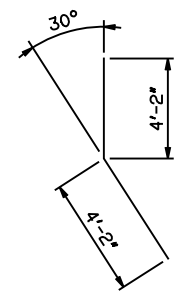
CL1 #4 x 4'-4"



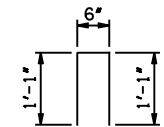
CL2 #4 x 4'-3"



WL1 #6 x 12'-9"
WL2 #5 x 10'-0"
WL3 #5 x 4'-8" AVG.

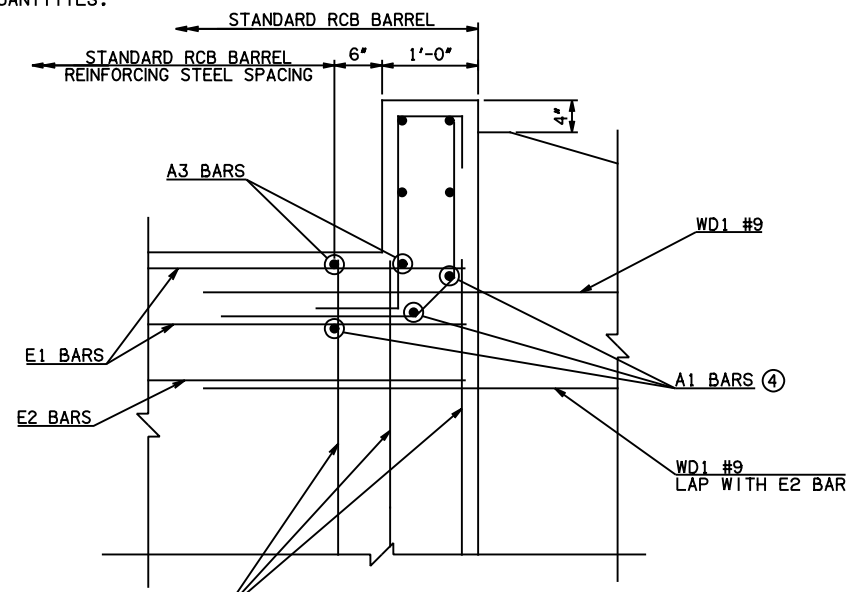


WD1 #9 x 8'-4"

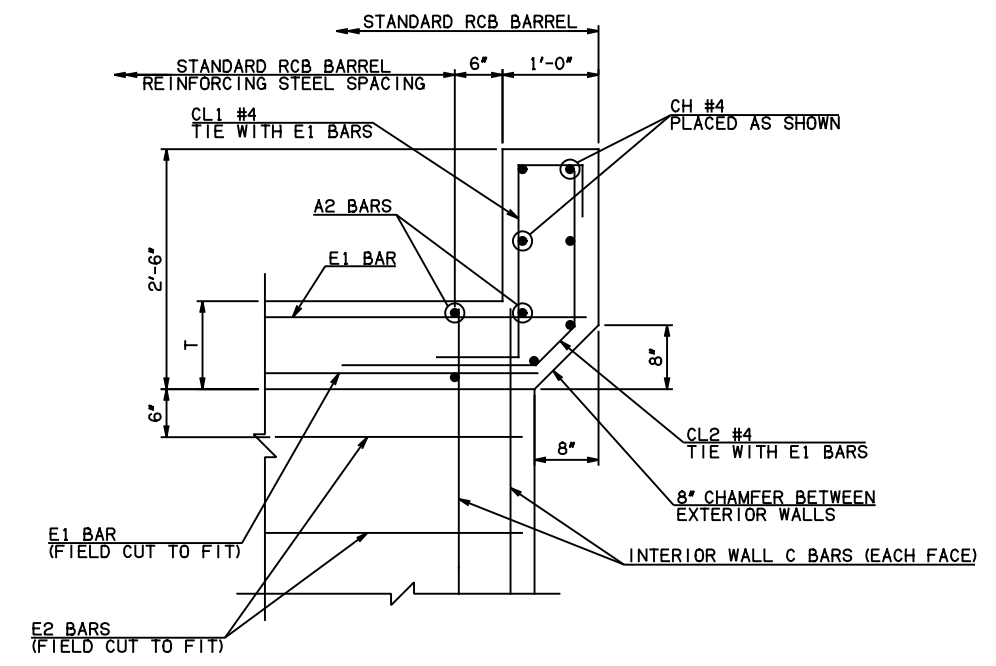


U1 #4 x 2'-8"

④ NOTE: TO CONSTRUCT ONE END SECTION AS SHOWN, THE FOLLOWING BARS ARE REQUIRED IN ADDITION TO THOSE CALLED IN THE RCB BARREL STANDARD:
1-A1 BAR
2-B1 BARS
2-B2 BARS
2-EXTERIOR WALL C BARS
2-EXTERIOR WALL C DOWEL BARS
ADDITIONAL WEIGHT IS INCLUDED IN QUANTITIES.



HEADWALL DETAIL AT EXTERIOR WALL



HEADWALL DETAIL AT INTERIOR WALL

APPROVED BY BRIDGE ENGINEER	<i>Heath J. Lueck</i>	DATE 4/2/10
OKLAHOMA DEPT. OF TRANSPORTATION BRIDGE STANDARD (ENGLISH) RCB CULVERTS - END SECTION DETAILS TRIPLE CELL - 8'-0" HEIGHT - 0° SHEET NO. 2 OF 2		
2009 SPECIFICATIONS	RCB-E3-H8-0-2	01E B-639E