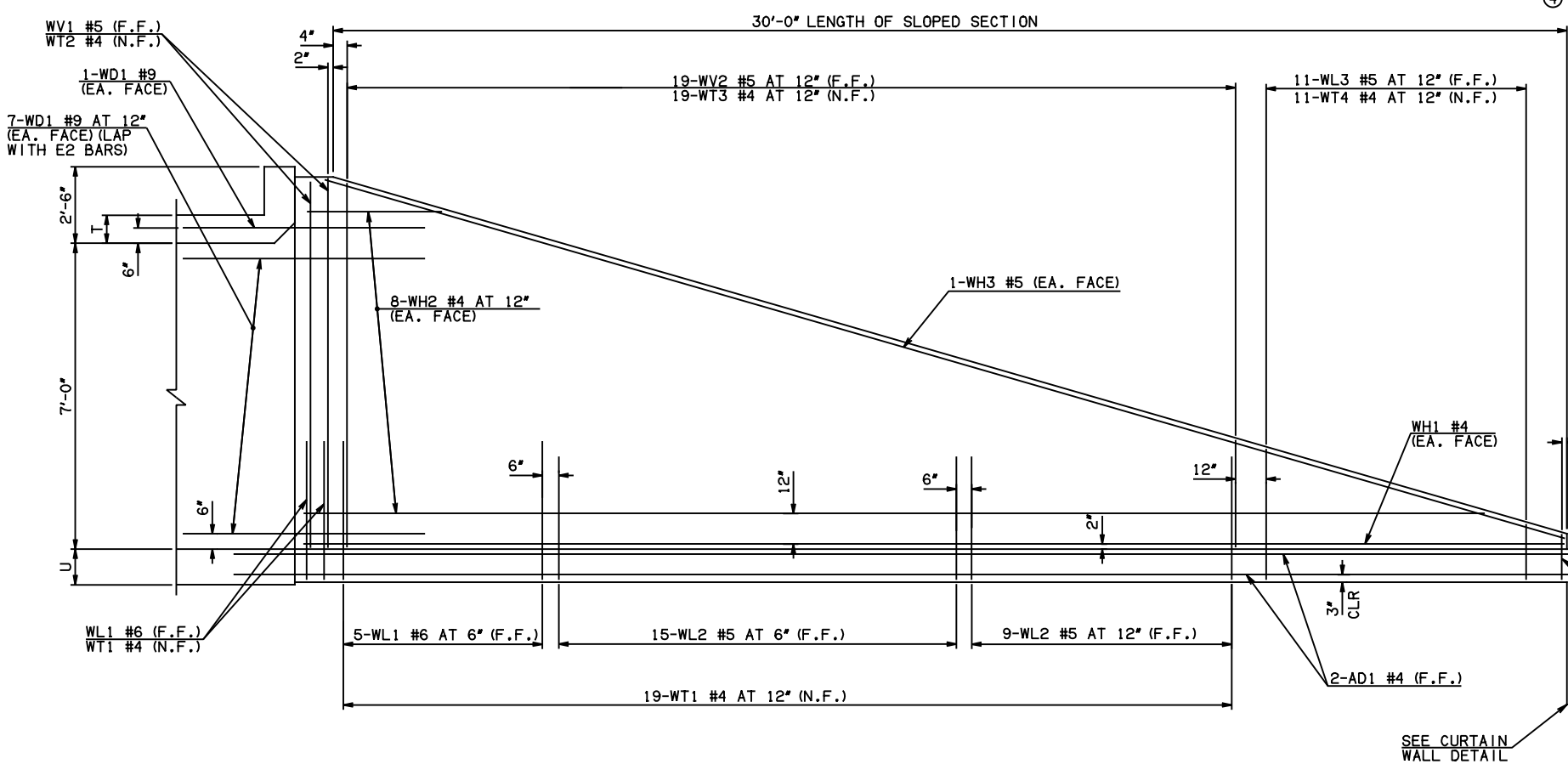


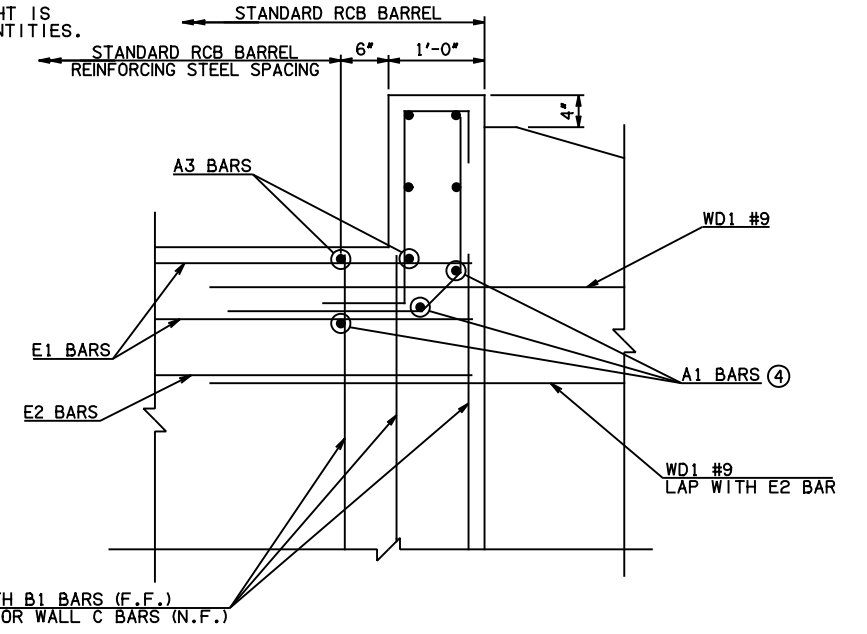
DESCRIPTION	REVISIONS	DATE

④ NOTE: TO CONSTRUCT ONE END SECTION AS SHOWN, THE FOLLOWING BARS ARE REQUIRED IN ADDITION TO THOSE CALLED IN THE RCB BARREL STANDARD:
 1-A1 BAR
 2-B1 BARS
 2-B2 BARS
 2-EXTERIOR WALL C BARS
 2-EXTERIOR WALL C DOWEL BARS
 ADDITIONAL WEIGHT IS INCLUDED IN QUANTITIES.

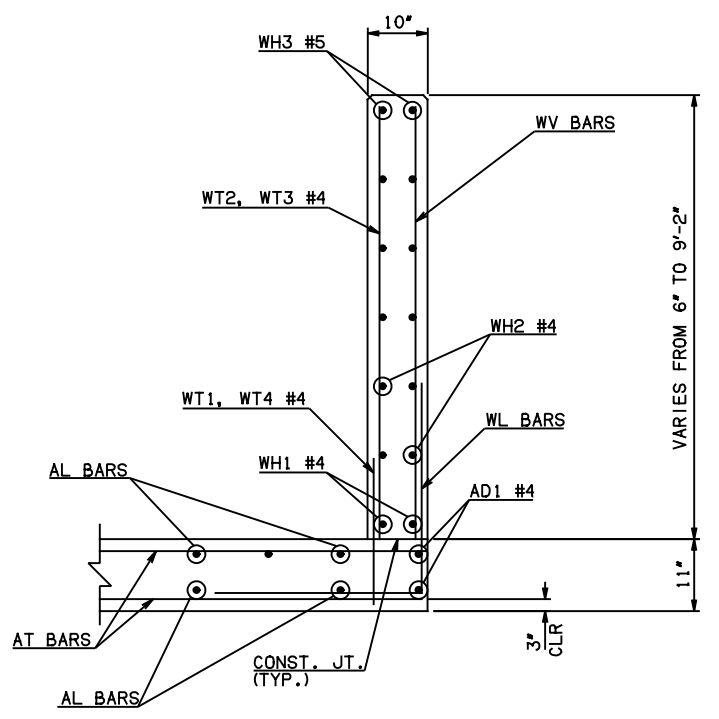


NOTE: F.F. = FAR FACE
 N.F. = NEAR FACE

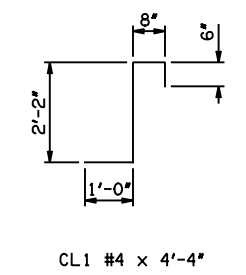
WING ELEVATION



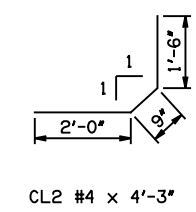
HEADWALL DETAIL AT EXTERIOR WALL



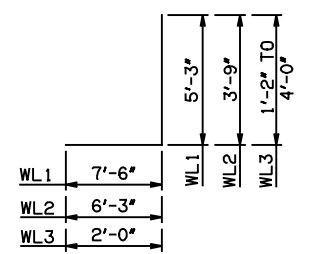
TYPICAL SECTION THRU WING



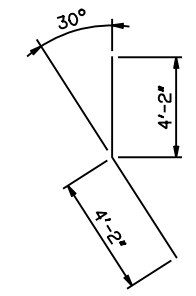
CL1 #4 x 4'-4"



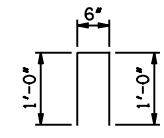
CL2 #4 x 4'-3"



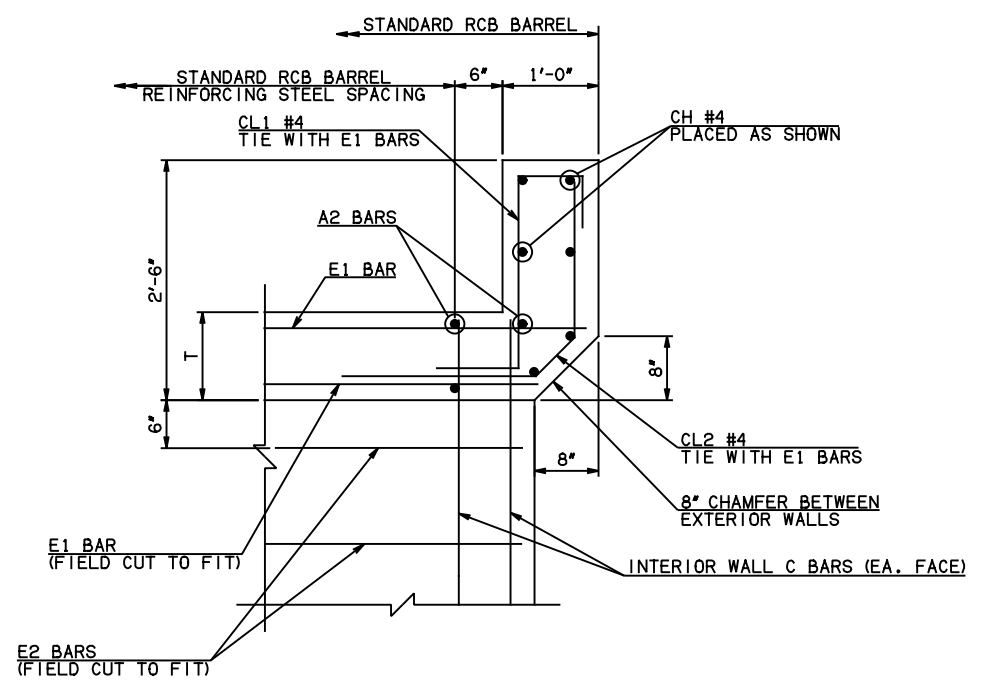
WL1 #6 x 12'-9"
 WL2 #5 x 10'-0"
 WL3 #5 x 4'-7" AVG.



WD1 #9 x 8'-4"



U1 #4 x 2'-6"



HEADWALL DETAIL AT INTERIOR WALL

APPROVED BY BRIDGE ENGINEER *Scott J. Smith* DATE 4/2/10

OKLAHOMA DEPT. OF TRANSPORTATION
BRIDGE STANDARD (ENGLISH)
 RCB CULVERTS - END SECTION DETAILS
 TRIPLE CELL - 7'-0" HEIGHT - 0°
 SHEET NO. 2 OF 2

2009 SPECIFICATIONS	RCB-E3-H7-0-2	01E
---------------------	---------------	-----