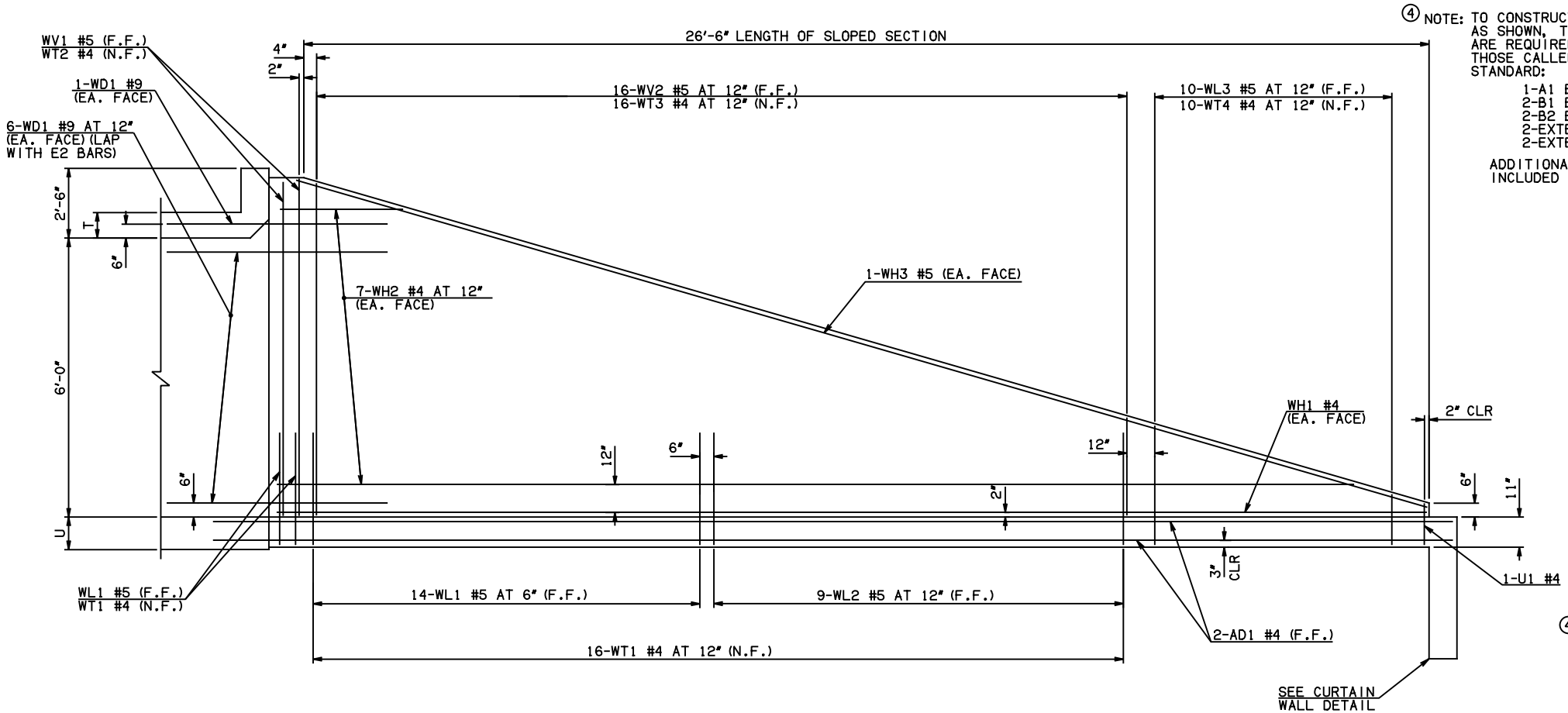


DESCRIPTION	REVISIONS	DATE

④ NOTE: TO CONSTRUCT ONE END SECTION AS SHOWN, THE FOLLOWING BARS ARE REQUIRED IN ADDITION TO THOSE CALLED IN THE RCB BARREL STANDARD:

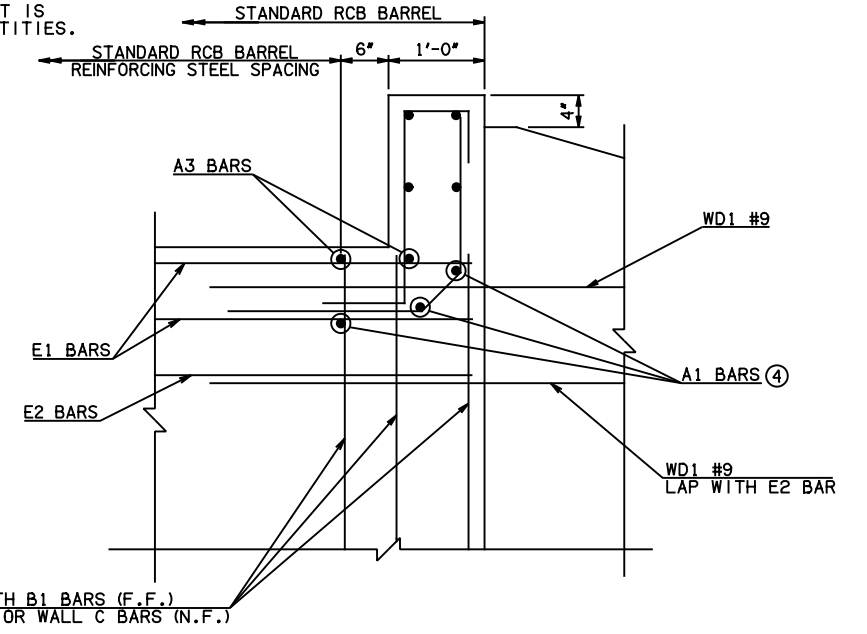
- 1-A1 BAR
- 2-B1 BARS
- 2-B2 BARS
- 2-EXTERIOR WALL C BARS
- 2-EXTERIOR WALL C DOWEL BARS

ADDITIONAL WEIGHT IS INCLUDED IN QUANTITIES.

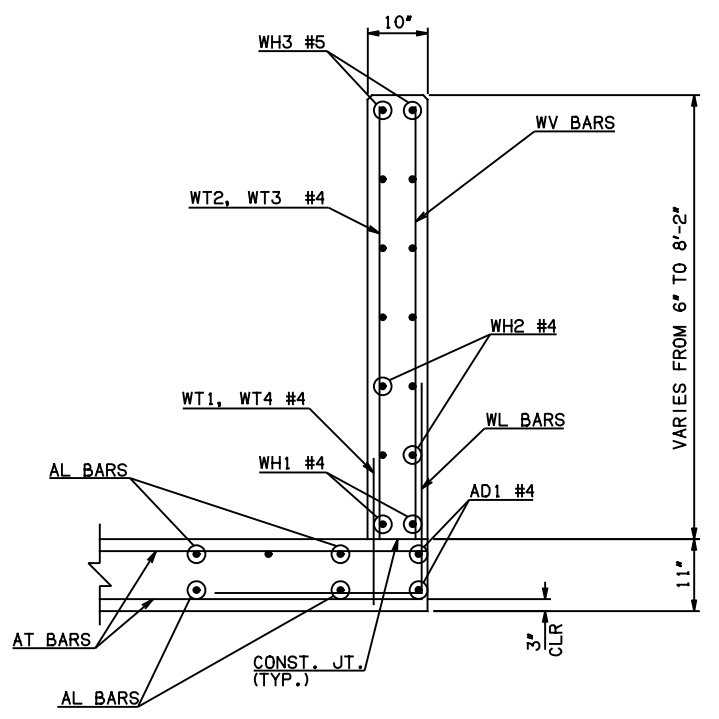


NOTE: F.F. = FAR FACE  
N.F. = NEAR FACE

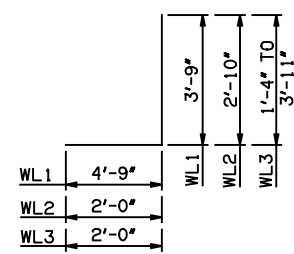
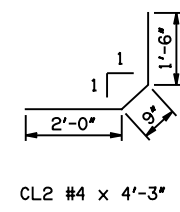
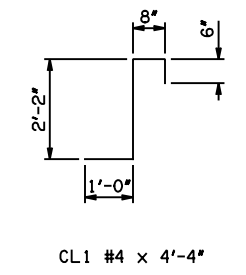
WING ELEVATION



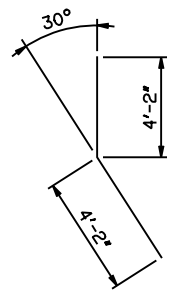
HEADWALL DETAIL AT EXTERIOR WALL



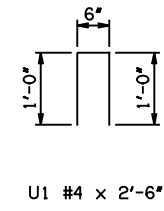
TYPICAL SECTION THRU WING



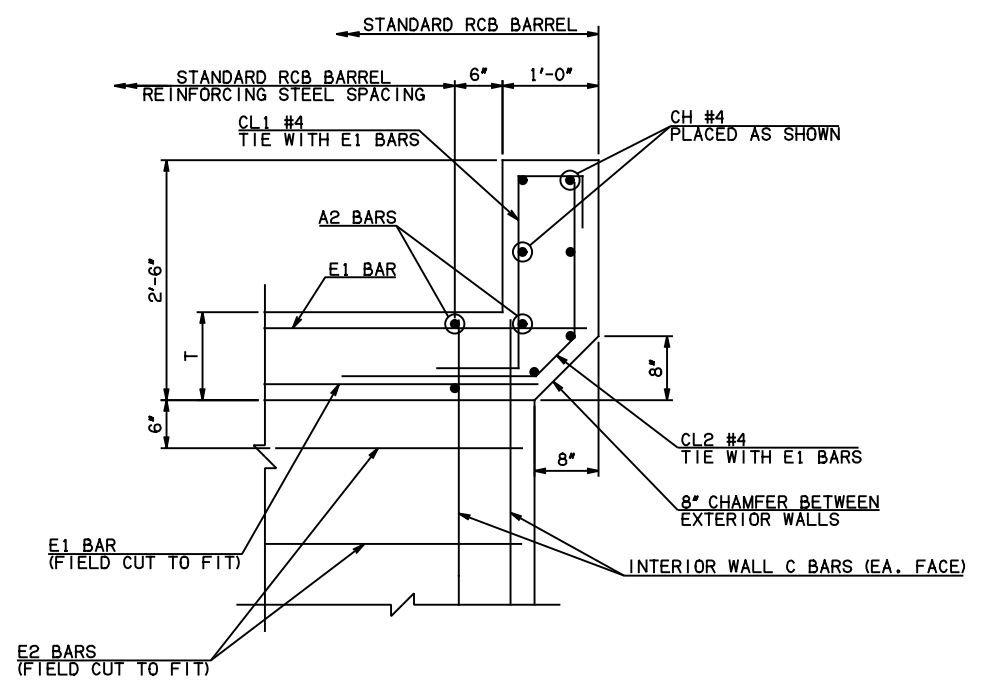
WL1 #5 x 8'-6"  
WL2 #5 x 4'-10"  
WL3 #5 x 4'-7 1/2" AVG.



WD1 #9 x 8'-4"



U1 #4 x 2'-6"



HEADWALL DETAIL AT INTERIOR WALL

APPROVED BY BRIDGE ENGINEER *Scott J. Smith* DATE 4/2/10

**OKLAHOMA DEPT. OF TRANSPORTATION**  
**BRIDGE STANDARD (ENGLISH)**  
 RCB CULVERTS - END SECTION DETAILS  
 TRIPLE CELL - 6'-0" HEIGHT - 0°  
 SHEET NO. 2 OF 2

2009 SPECIFICATIONS	RCB-E3-H6-0-2	01E
---------------------	---------------	-----