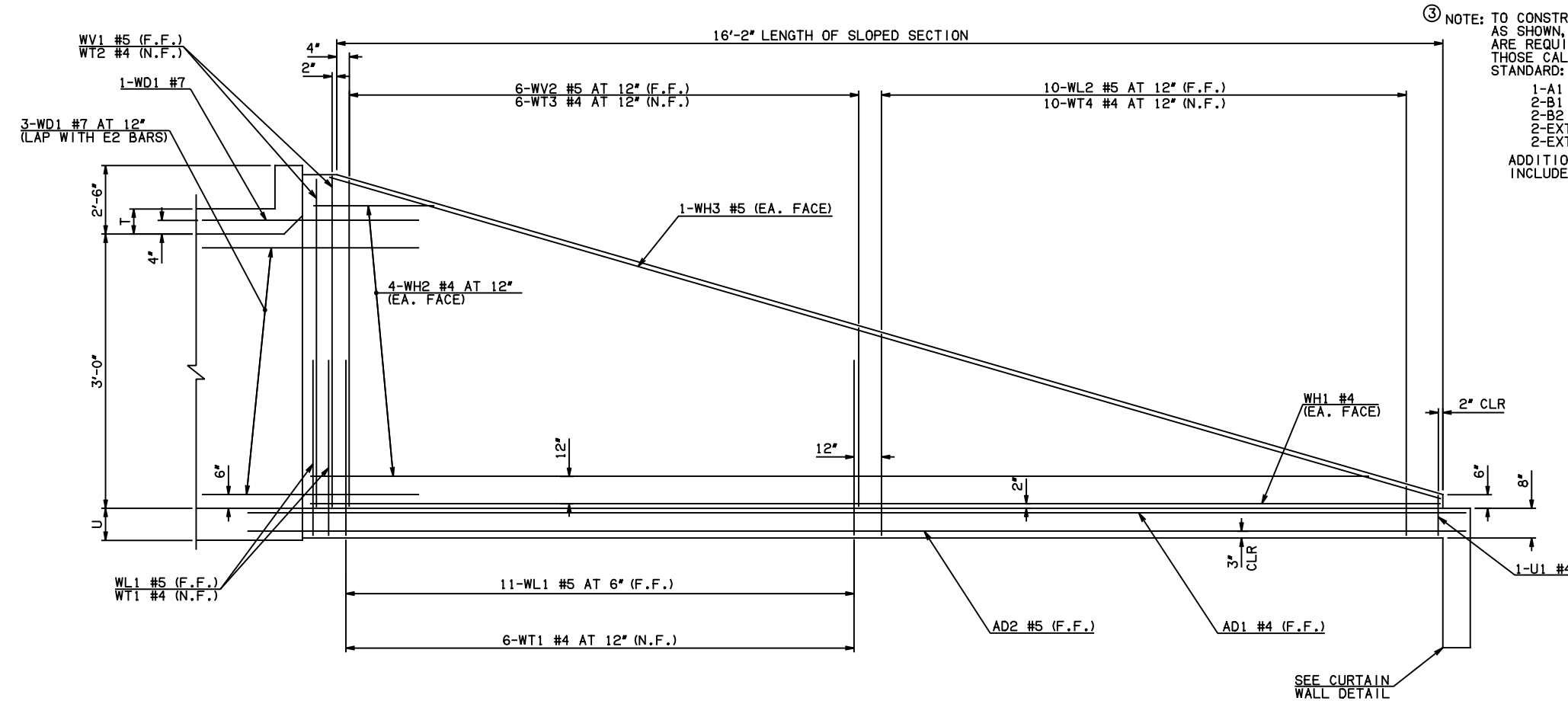
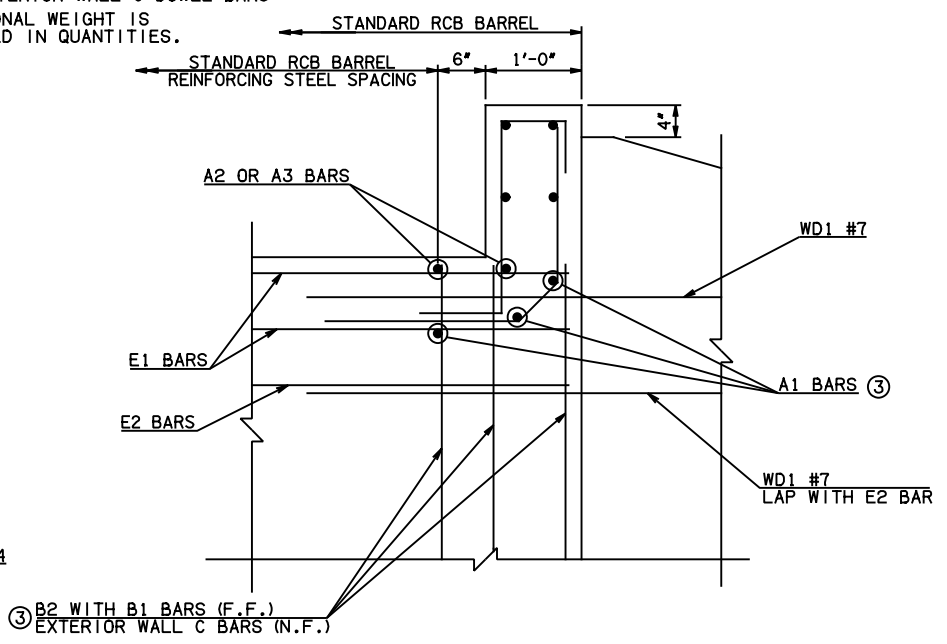


DESCRIPTION	REVISIONS	DATE

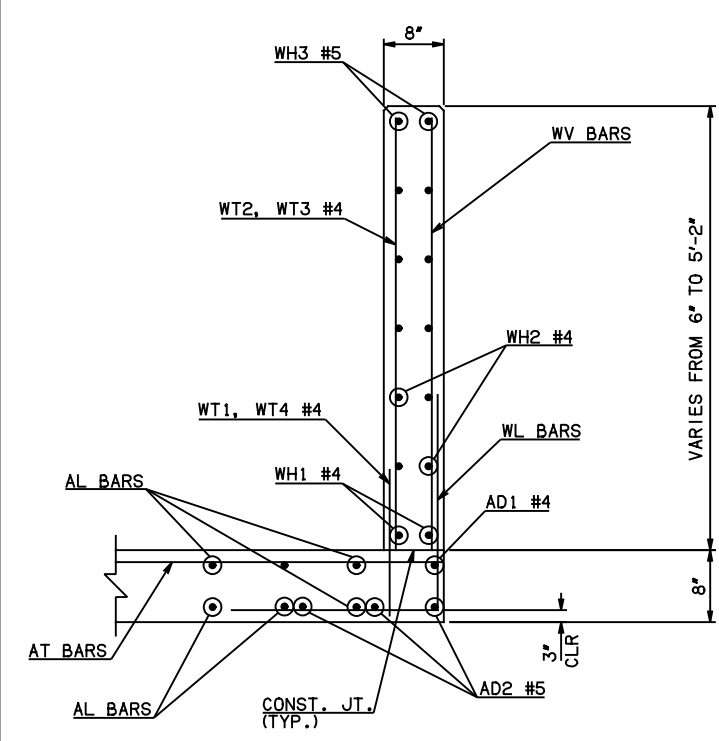


NOTE: F.F. = FAR FACE
N.F. = NEAR FACE

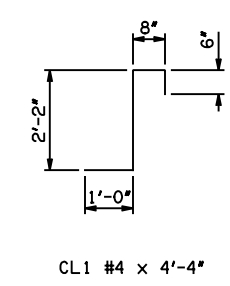
WING ELEVATION



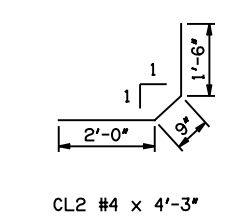
HEADWALL DETAIL AT EXTERIOR WALL



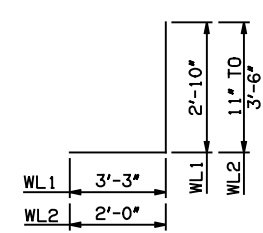
TYPICAL SECTION THRU WING



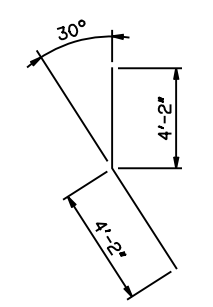
CL1 #4 x 4'-4"



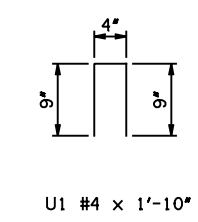
CL2 #4 x 4'-3"



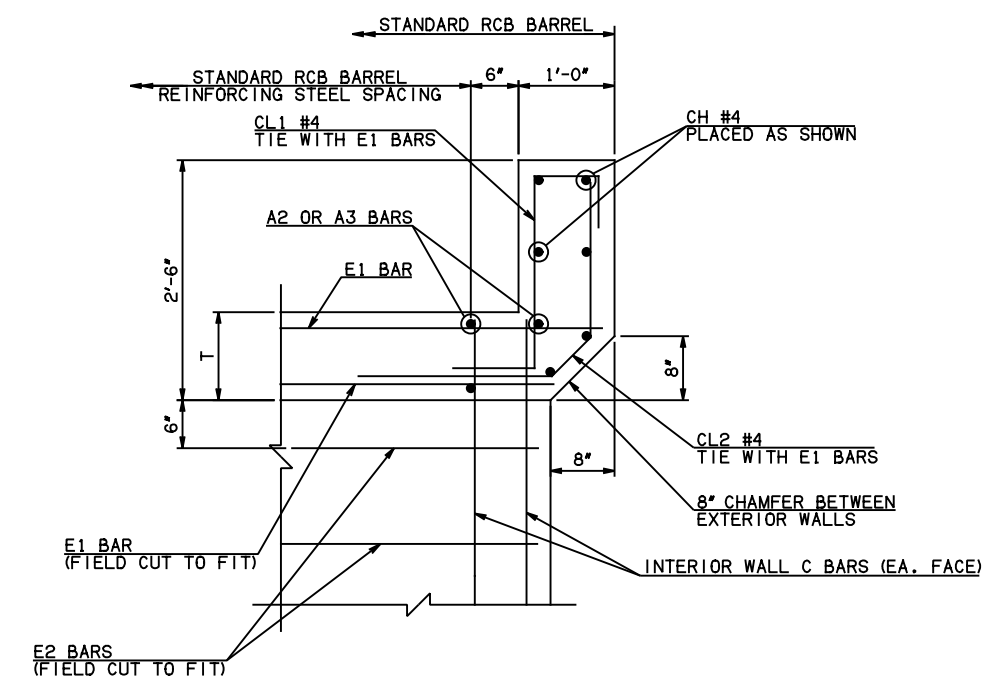
WL1 #5 x 6'-1"
WL2 #5 x 4'-2 1/2" AVG.



WD1 #7 x 8'-4"



U1 #4 x 1'-10"



HEADWALL DETAIL AT INTERIOR WALL

APPROVED BY BRIDGE ENGINEER *Scott J. Smith* DATE 4/2/10

OKLAHOMA DEPT. OF TRANSPORTATION
BRIDGE STANDARD (ENGLISH)
 RCB CULVERTS - END SECTION DETAILS
 TRIPLE CELL - 3'-0" HEIGHT - 0°
 SHEET NO. 2 OF 2

2009 SPECIFICATIONS	RCB-E3-H3-0-2	01E
---------------------	---------------	-----