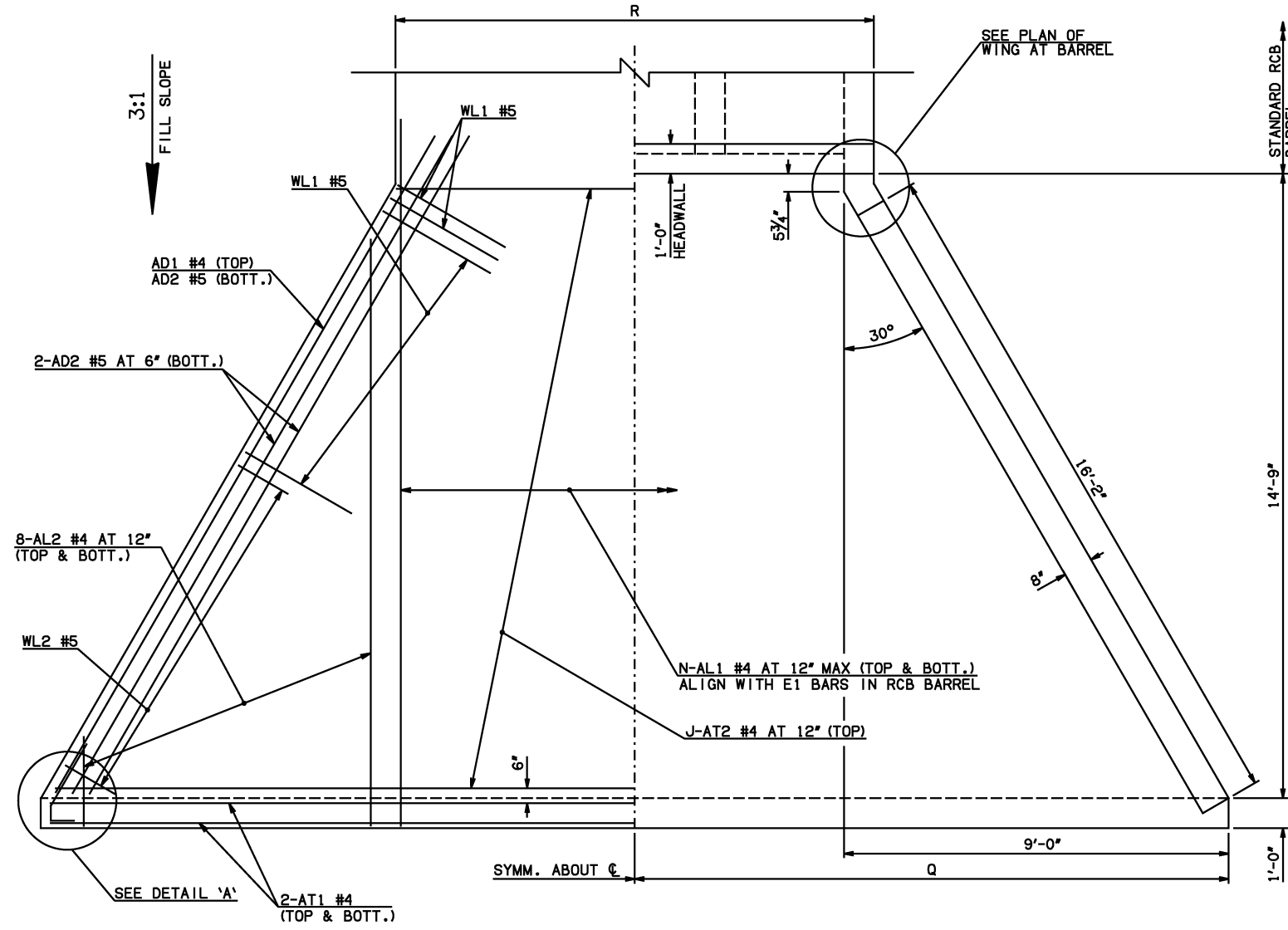
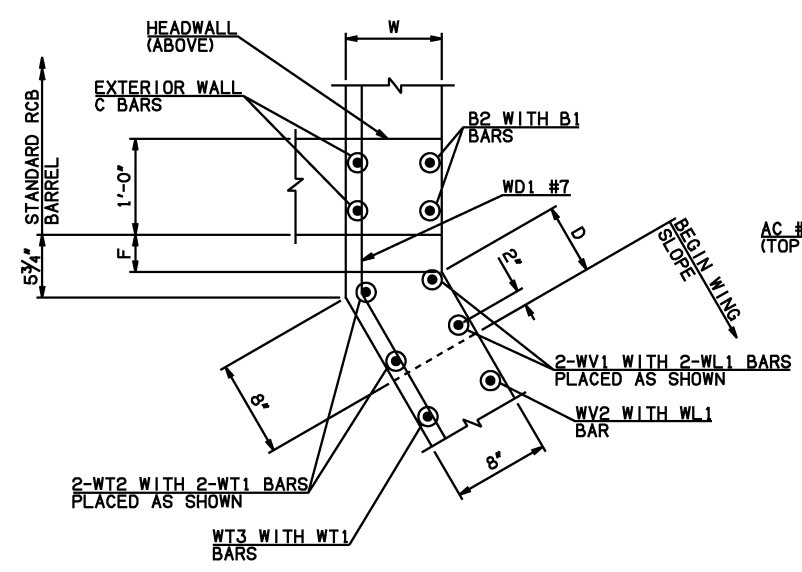


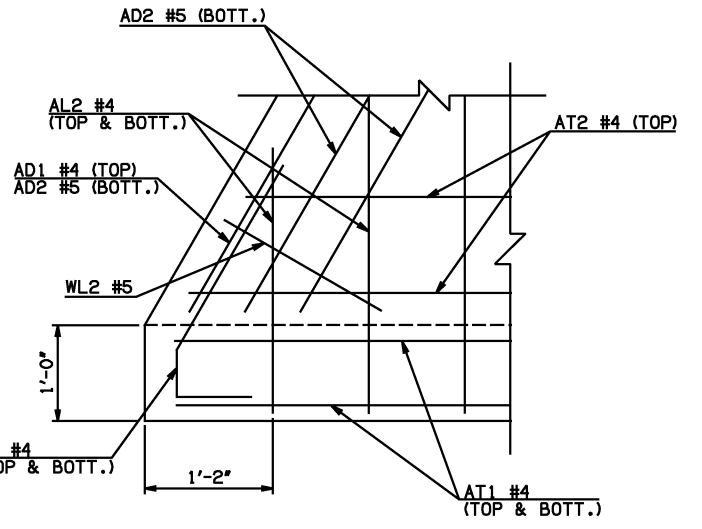
DESCRIPTION	REVISIONS	DATE



WINGWALL DIMENSIONS			
SPAN	W	D	F
4'	10"	13 1/4"	7"
5'	10"	13 1/4"	7"
6'	10"	13 1/4"	7"
8'	10"	13 1/4"	7"
10'	10"	13 1/4"	7"



APRON VARIABLES					
SPAN	DIM. R	DIM. Q	QTY. J	QTY. N	
4'	15'-4"	15'-10"	15	20	
5'	18'-4"	17'-4"	15	23	
6'	21'-4"	18'-10"	15	26	
8'	27'-4"	21'-10"	15	32	
10'	33'-4"	24'-10"	15	38	



WINGWALL BAR LIST					
ONE WINGWALL SHOWN; TWO REQUIRED					
MARK	SIZE	QTY.	FORM	LENGTH	REMARKS
WD1	#7	4	BNT	8'-4"	
WH1	#4	2	STR	16'-8"	
WH2	#4	8	STR	8'-8 1/2" AVG.	3'-6" TO 13'-11"
WH3	#5	2	STR	16'-7"	
WL1	#5	13	BNT	6'-1"	
WL2	#5	10	BNT	4'-2 1/2" AVG.	2'-11" TO 5'-6"
WT1	#4	8	STR	2'-10"	
WT2	#4	2	STR	5'-0"	
WT3	#4	6	STR	4'-1 1/2" AVG.	3'-5" TO 4'-10"
WT4	#4	10	STR	2'-2 1/2" AVG.	11" TO 3'-6"
WV1	#5	2	STR	5'-0"	
WV2	#5	6	STR	4'-1 1/2" AVG.	3'-5" TO 4'-10"
U1	#4	1	BNT	1'-10"	

- ① 4-SETS OF 8-AL2 BARS REQUIRED
- ② 2-SETS OF 4-WH2 BARS REQUIRED

APRON AND HEADWALL BAR LIST

ONE APRON AND ONE HEADWALL SHOWN																	
MARK	SIZE	FORM	4' SPAN			5' SPAN			6' SPAN			8' SPAN			10' SPAN		
			QTY.	LENGTH	REMARKS	QTY.	LENGTH	REMARKS	QTY.	LENGTH	REMARKS	QTY.	LENGTH	REMARKS	QTY.	LENGTH	
AC	#4	BNT	4	3'-8"		4	3'-8"		4	3'-8"		4	3'-8"		4	3'-8"	
AD1	#4	STR	2	18'-8"		2	18'-8"		2	18'-8"		2	18'-8"		2	18'-8"	
AD2	#5	STR	6	18'-8"		6	18'-8"		6	18'-8"		6	18'-8"		6	18'-8"	
AL1	#4	STR	40	17'-7"		46	17'-7"		52	17'-7"		64	17'-7"		76	17'-7"	
① AL2	#4	STR	32	8'-6 1/2" AVG.	2'-6" TO 14'-7"	32	8'-6 1/2" AVG.	2'-6" TO 14'-7"	32	8'-6 1/2" AVG.	2'-6" TO 14'-7"	32	8'-6 1/2" AVG.	2'-6" TO 14'-7"	32	8'-6 1/2" AVG.	2'-6" TO 14'-7"
AT1	#4	STR	4	31'-4"		4	34'-4"		4	37'-4"		4	43'-4"		4	49'-4"	
AT2	#4	STR	15	22'-9" AVG.	14'-8" TO 30'-10"	15	25'-9" AVG.	17'-8" TO 33'-10"	15	28'-9" AVG.	20'-8" TO 36'-10"	15	34'-9" AVG.	26'-8" TO 42'-10"	15	40'-9" AVG.	32'-8" TO 48'-10"
CH	#4	STR	4	15'-0"		4	18'-0"		4	21'-0"		4	27'-0"		4	33'-0"	
CL1	#4	BNT	20	4'-4"		23	4'-4"		26	4'-4"		32	4'-4"		38	4'-4"	
CL2	#4	BNT	20	4'-3"		23	4'-3"		26	4'-3"		32	4'-3"		38	4'-3"	

QUANTITIES						
ITEM	UNIT	4' SPAN	5' SPAN	6' SPAN	8' SPAN	10' SPAN
CLASS AA CONCRETE	CY	12.50	13.80	15.20	17.70	20.30
REINFORCING STEEL	LB	2110.00	2240.00	2370.00	2680.00	2980.00

NOTE: QUANTITIES ABOVE ARE FOR ONE END SECTION, WHICH IS COMPRISED OF ONE HEADWALL, ONE APRON, AND TWO WINGWALLS. INCLUDED IN REINFORCING STEEL PAY ITEM QUANTITY IS THE WEIGHT OF ADDITIONAL RCB BARREL REINFORCING STEEL REQUIRED AS SHOWN.

APPROVED BY BRIDGE ENGINEER *Scott J. Smith* DATE 4/2/10

OKLAHOMA DEPT. OF TRANSPORTATION
BRIDGE STANDARD (ENGLISH)
 RCB CULVERTS - END SECTION DETAILS
 TRIPLE CELL - 3'-0" HEIGHT - 0°
 SHEET NO. 1 OF 2

2009 SPECIFICATIONS | RCB-E3-H3-0-1 | 01E | B-628E