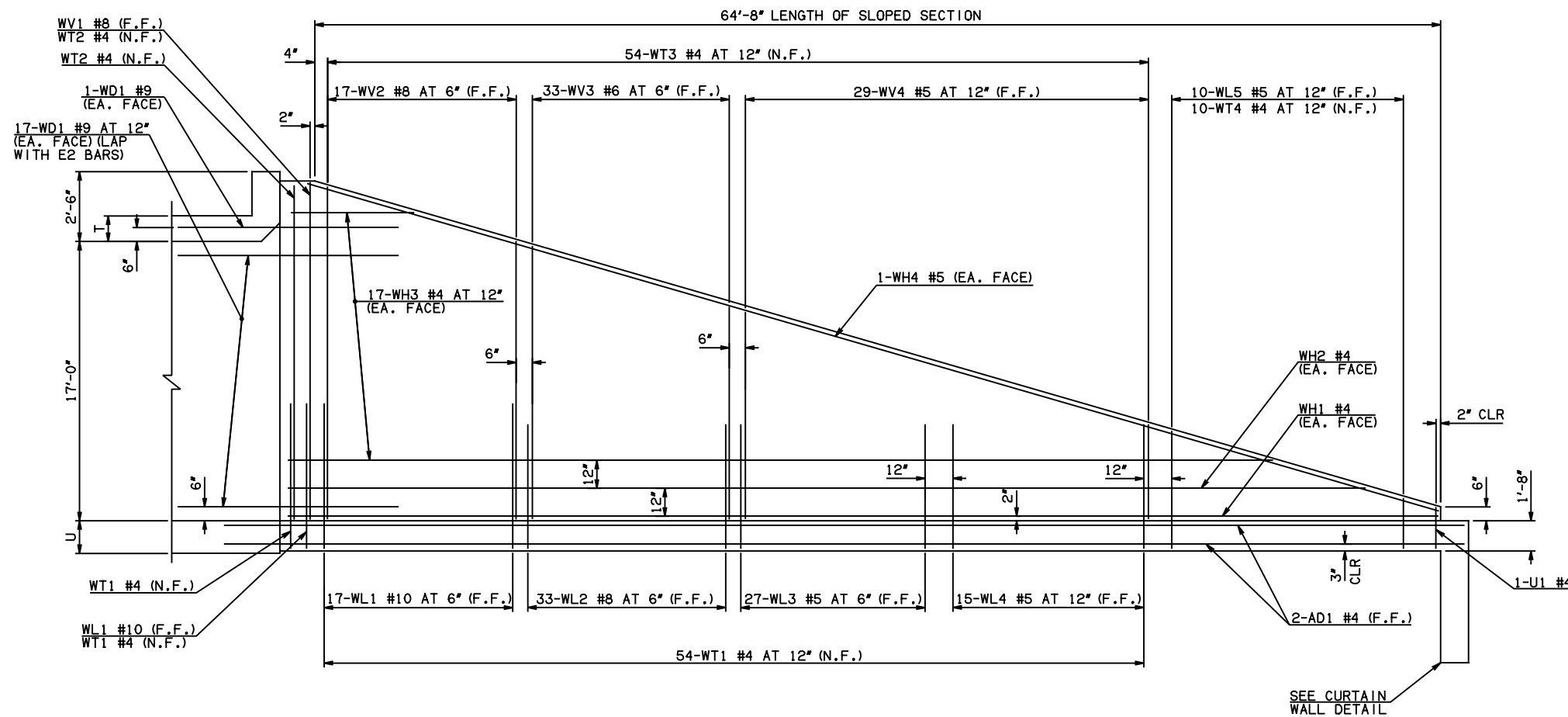
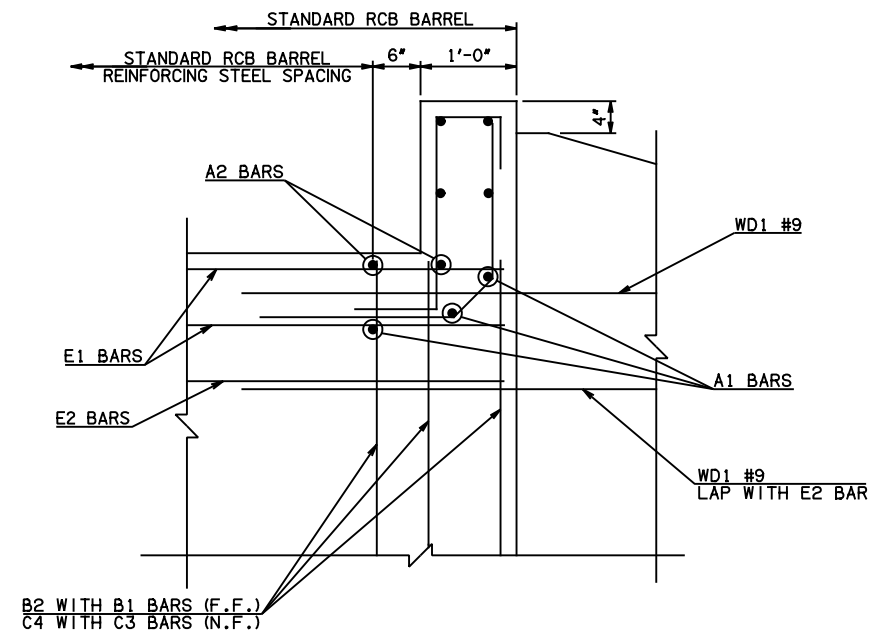


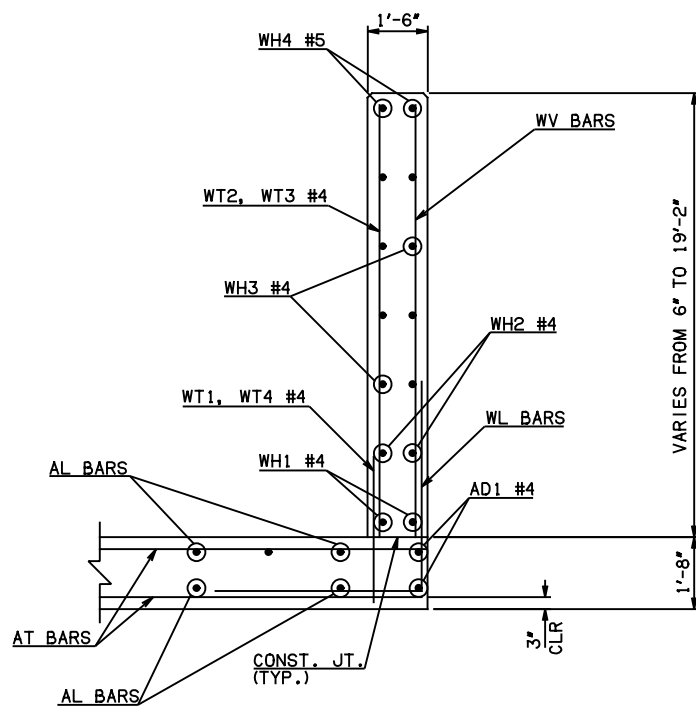
DESCRIPTION	REVISIONS	DATE



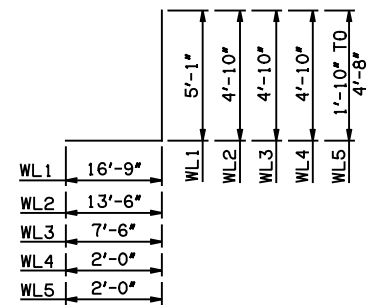
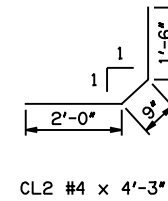
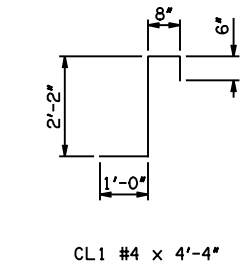
WING ELEVATION



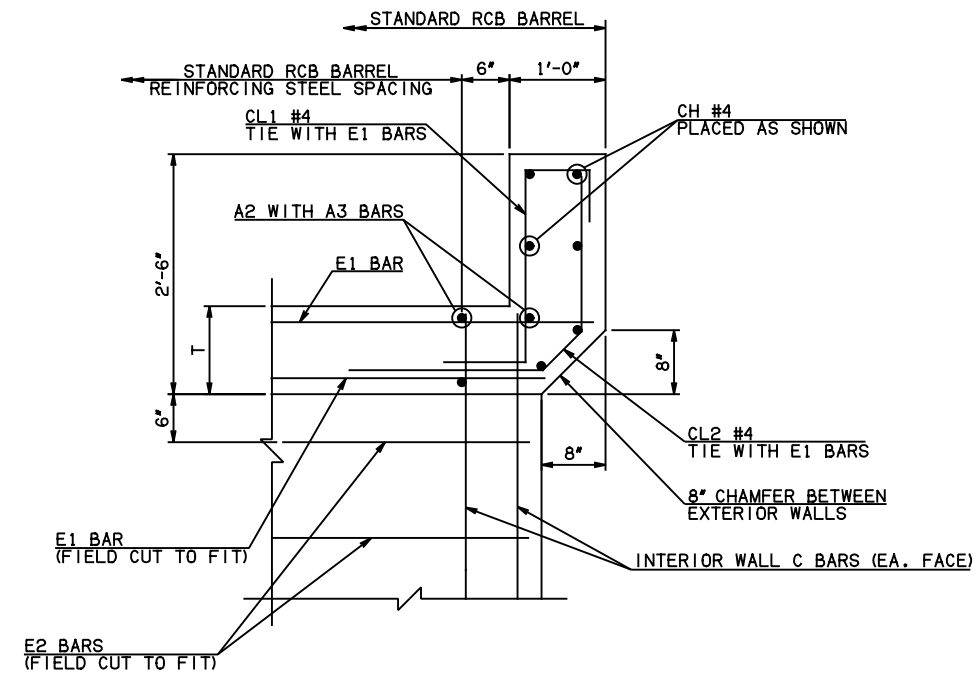
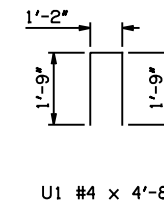
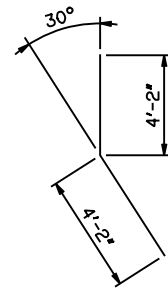
HEADWALL DETAIL AT EXTERIOR WALL



TYPICAL SECTION THRU WING



WL1 #10 x 21'-10"
WL2 #8 x 18'-4"
WL3 #5 x 12'-4"
WL4 #5 x 6'-10"
WL5 #5 x 5'-3" AVG.



HEADWALL DETAIL AT INTERIOR WALL

APPROVED BY BRIDGE ENGINEER *Scott J. Smith* DATE 4/2/10

OKLAHOMA DEPT. OF TRANSPORTATION
BRIDGE STANDARD (ENGLISH)
RCB CULVERTS - END SECTION DETAILS
DOUBLE CELL - 17'-0" HEIGHT - 0°
SHEET NO. 2 OF 2

2009 SPECIFICATIONS RCB-E2-H17-0-2 01E
B-623E