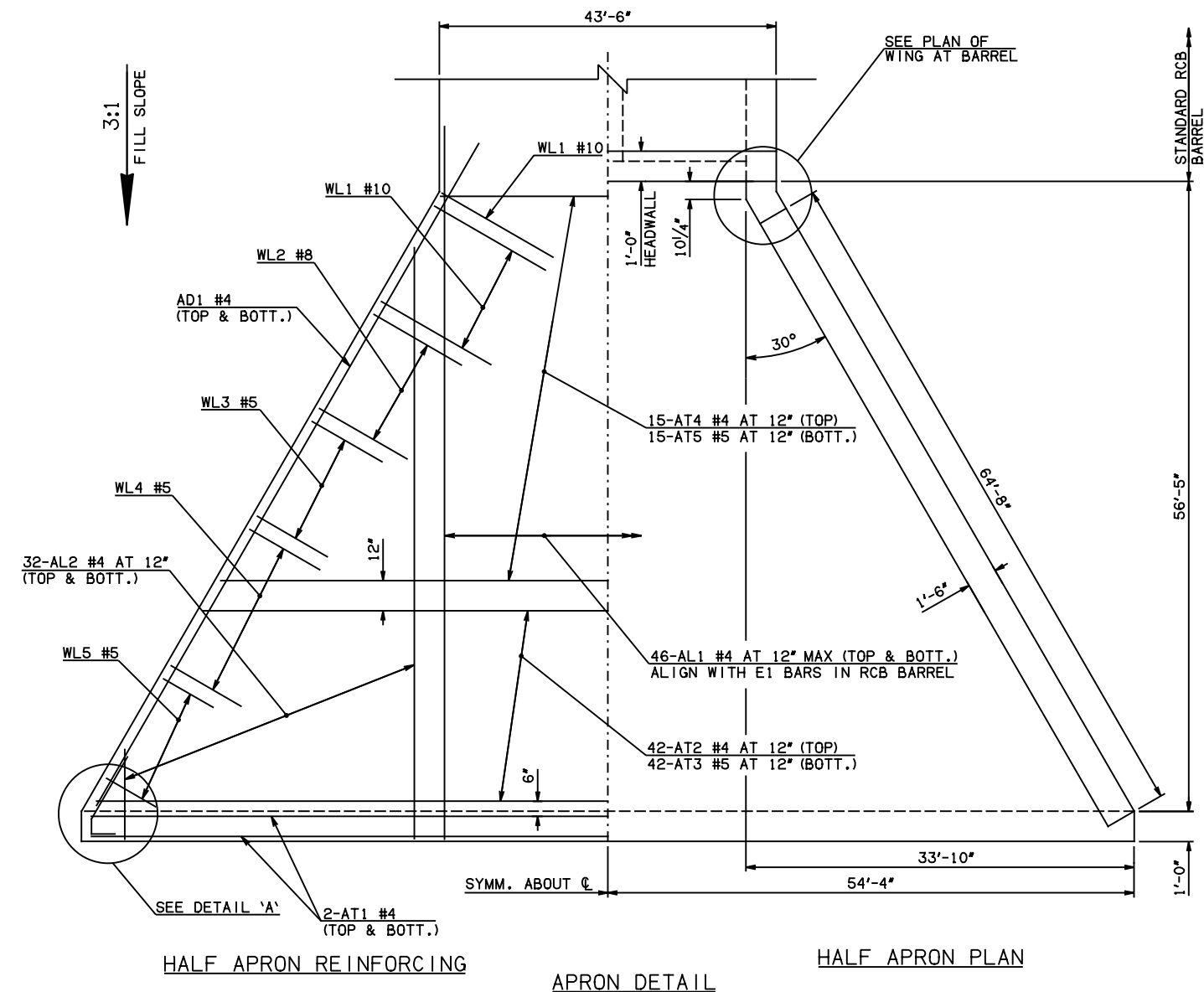


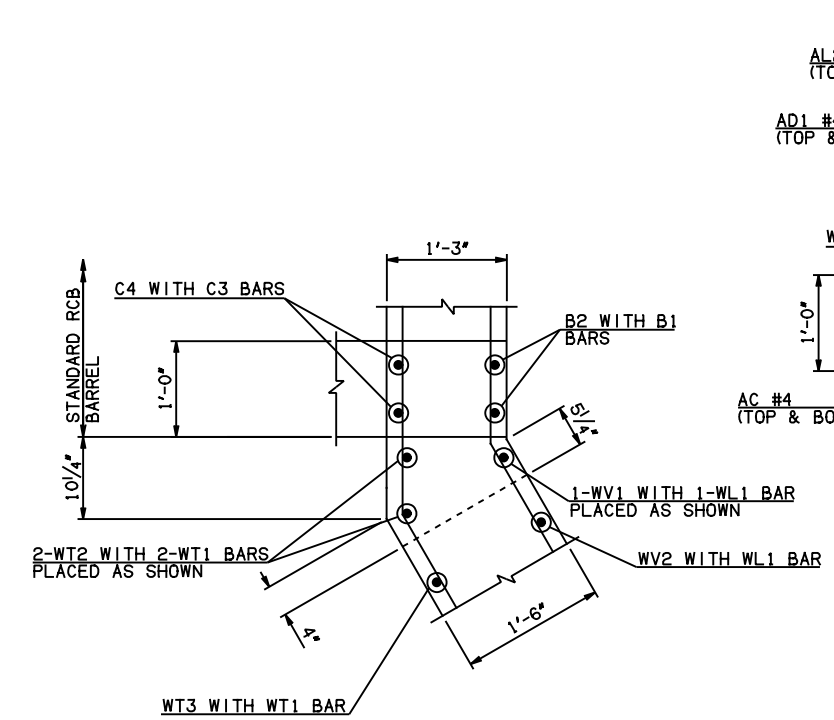
DESCRIPTION	REVISIONS	DATE



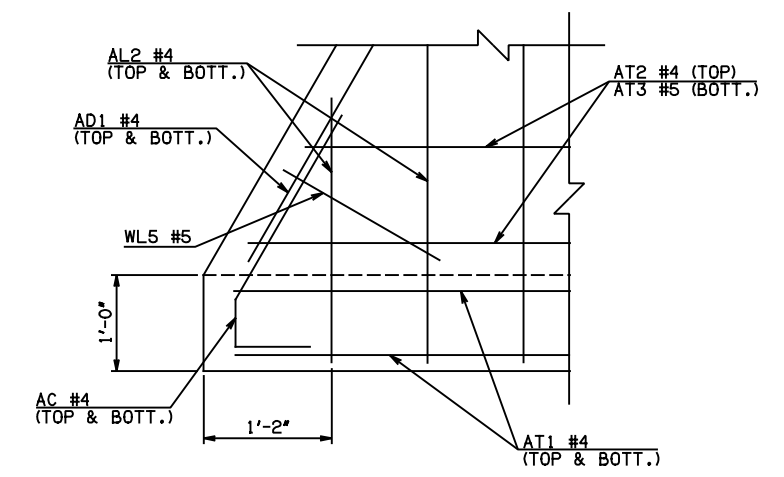
APRON AND HEADWALL BAR LIST					
ONE APRON AND ONE HEADWALL SHOWN					
MARK	SIZE	FORM	QTY.	LENGTH	REMARKS
AC	#4	BNT	4	3'-8"	
AD1	#4	STR	4	69'-4"	
AL1	#4	STR	92	59'-3"	
AL2	#4	STR	128	29'-4" AVG.	2'-6" TO 56'-2"
AT1	#4	STR	4	110'-10"	
AT2	#4	STR	42	86'-7 1/2" AVG.	62'-11" TO 110'-4"
AT3	#5	STR	42	86'-7 1/2" AVG.	62'-11" TO 110'-4"
AT4	#4	STR	15	51'-3" AVG.	43'-2" TO 59'-4"
AT5	#5	STR	15	51'-3" AVG.	43'-2" TO 59'-4"
CH	#4	STR	4	43'-2"	
CL1	#4	BNT	46	4'-4"	
CL2	#4	BNT	46	4'-3"	

QUANTITIES		
ITEM	UNIT	20' SPAN
CLASS AA CONCRETE	CY	344.60
REINFORCING STEEL	LB	31170.00

NOTE: QUANTITIES ABOVE ARE FOR ONE END SECTION, WHICH IS COMPRISED OF ONE HEADWALL, ONE APRON, AND TWO WINGWALLS.



PLAN OF WING AT BARREL



DETAIL 'A'

WINGWALL BAR LIST					
ONE WINGWALL SHOWN; TWO REQUIRED					
MARK	SIZE	QTY.	FORM	LENGTH	REMARKS
WD1	#9	36	BNT	8'-4"	
WH1	#4	2	STR	67'-4"	③
WH2	#4	2	STR	64'-7"	③
WH3	#4	34	STR	30'-10 1/2" AVG.	3'-2" TO 58'-7"
WH4	#5	2	STR	69'-7"	③
WL1	#10	18	BNT	21'-10"	
WL2	#8	33	BNT	18'-4"	
WL3	#5	27	BNT	12'-4"	
WL4	#5	15	BNT	6'-10"	
WL5	#5	11	BNT	5'-3" AVG.	3'-10" TO 6'-8"
WT1	#4	56	STR	3'-10"	
WT2	#4	2	STR	19'-0"	
WT3	#4	54	STR	11'-2 1/2" AVG.	3'-7" TO 18'-10"
WT4	#4	11	STR	3'-3" AVG.	1'-10" TO 4'-8"
WV1	#8	2	STR	19'-0"	
WV2	#8	17	STR	17'-8 1/2" AVG.	16'-7" TO 18'-10"
WV3	#6	33	STR	14'-1" AVG.	11'-9" TO 16'-5"
WV4	#5	29	STR	7'-7 1/2" AVG.	3'-7" TO 11'-8"
U1	#4	1	BNT	4'-8"	

- ① 4-SETS OF 32-AL2 BARS REQUIRED
- ② 2-SETS OF 17-WH3 BARS REQUIRED
- ③ INCLUDES 2'-6" LAP

APPROVED BY BRIDGE ENGINEER *Scott J. Smith* DATE 4/2/10

OKLAHOMA DEPT. OF TRANSPORTATION
BRIDGE STANDARD (ENGLISH)
 RCB CULVERTS - END SECTION DETAILS
 DOUBLE CELL - 17'-0" HEIGHT - 0°
 SHEET NO. 1 OF 2

2009 SPECIFICATIONS RCB-E2-H17-0-1 01E
 B-622E