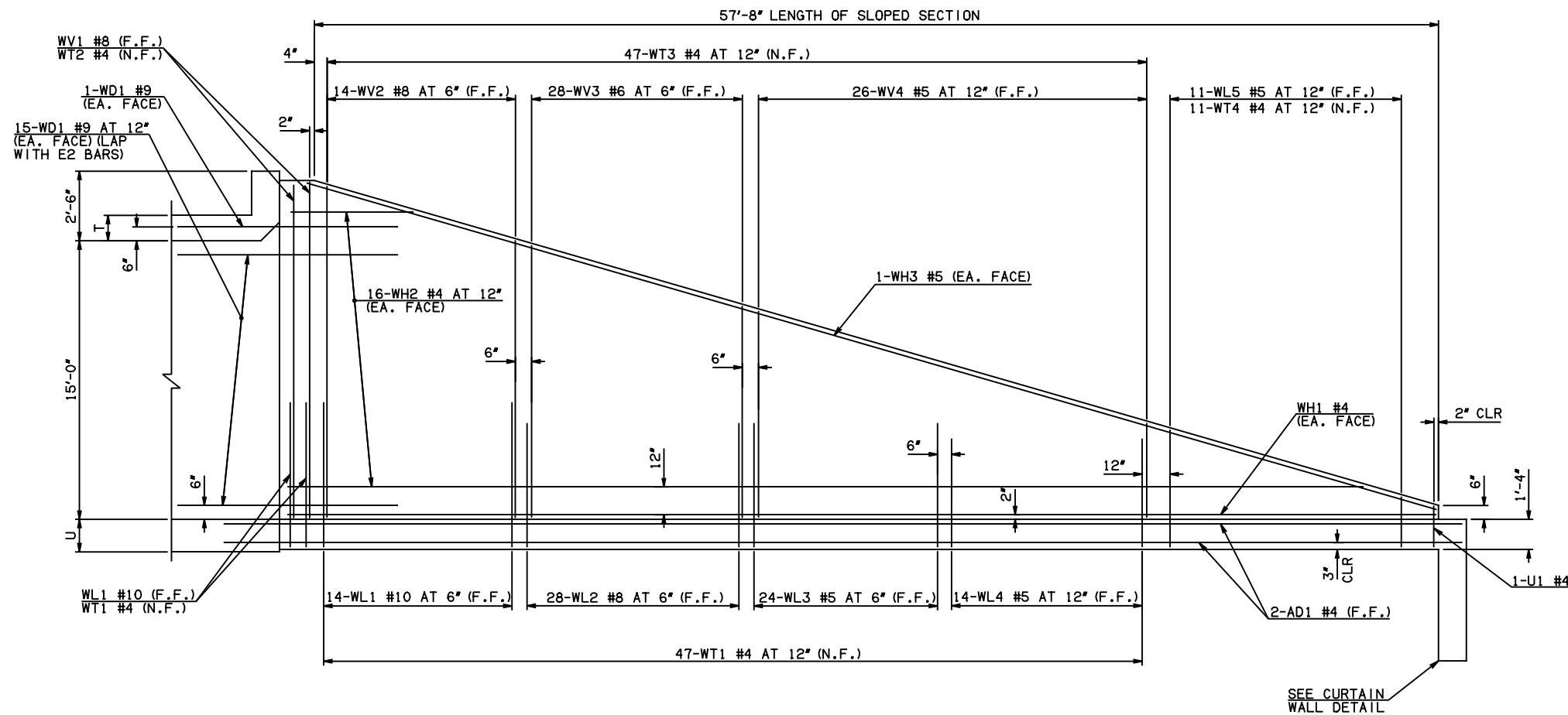
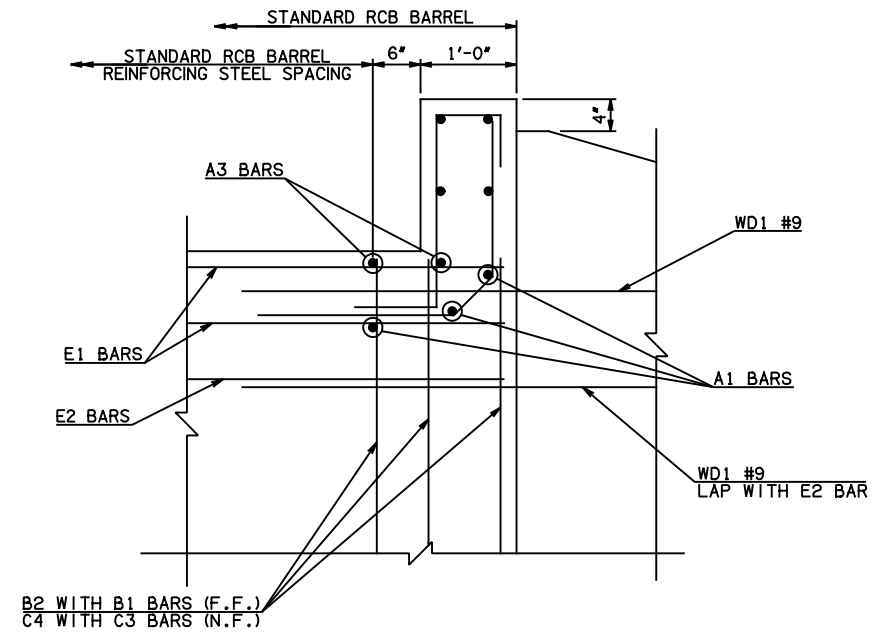


DESCRIPTION	REVISIONS	DATE

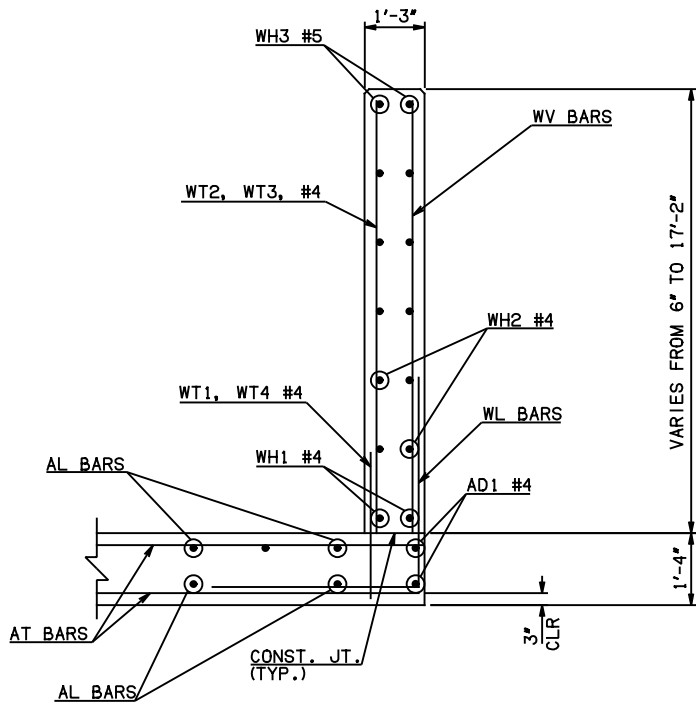


NOTE: F.F. = FAR FACE  
N.F. = NEAR FACE

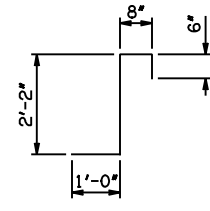
WING ELEVATION



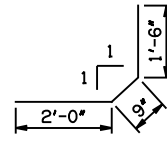
HEADWALL DETAIL AT EXTERIOR WALL



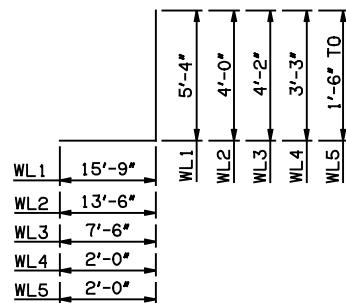
TYPICAL SECTION THRU WING



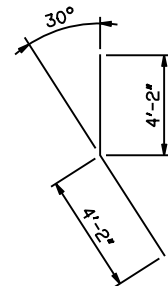
CL1 #4 x 4'-4"



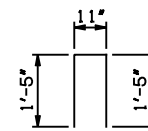
CL2 #4 x 4'-3"



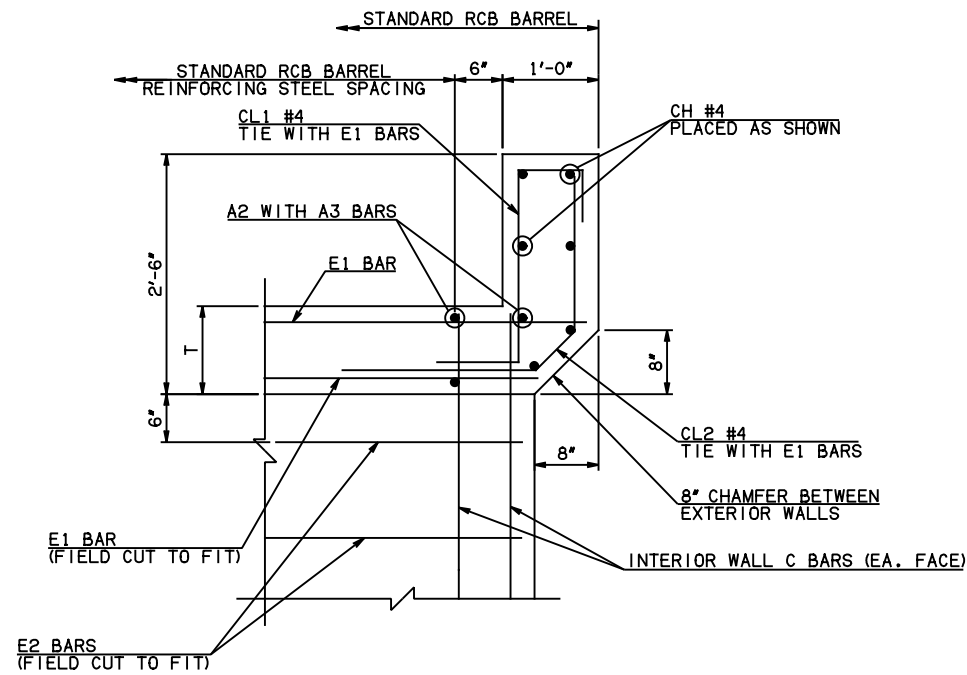
WL1 #10 x 21'-1"  
WL2 #8 x 17'-6"  
WL3 #5 x 11'-8"  
WL4 #5 x 5'-3"  
WL5 #5 x 4'-11' AVG.



WD1 #9 x 8'-4"



U1 #4 x 3'-9"



HEADWALL DETAIL AT INTERIOR WALL

APPROVED BY BRIDGE ENGINEER *Scott J. Smith* DATE 4/2/10

**OKLAHOMA DEPT. OF TRANSPORTATION**  
**BRIDGE STANDARD (ENGLISH)**  
RCB CULVERTS - END SECTION DETAILS  
DOUBLE CELL - 15'-0" HEIGHT - 0°  
SHEET NO. 2 OF 2

2009 SPECIFICATIONS      RCB-E2-H15-0-2      01E  
B-621E