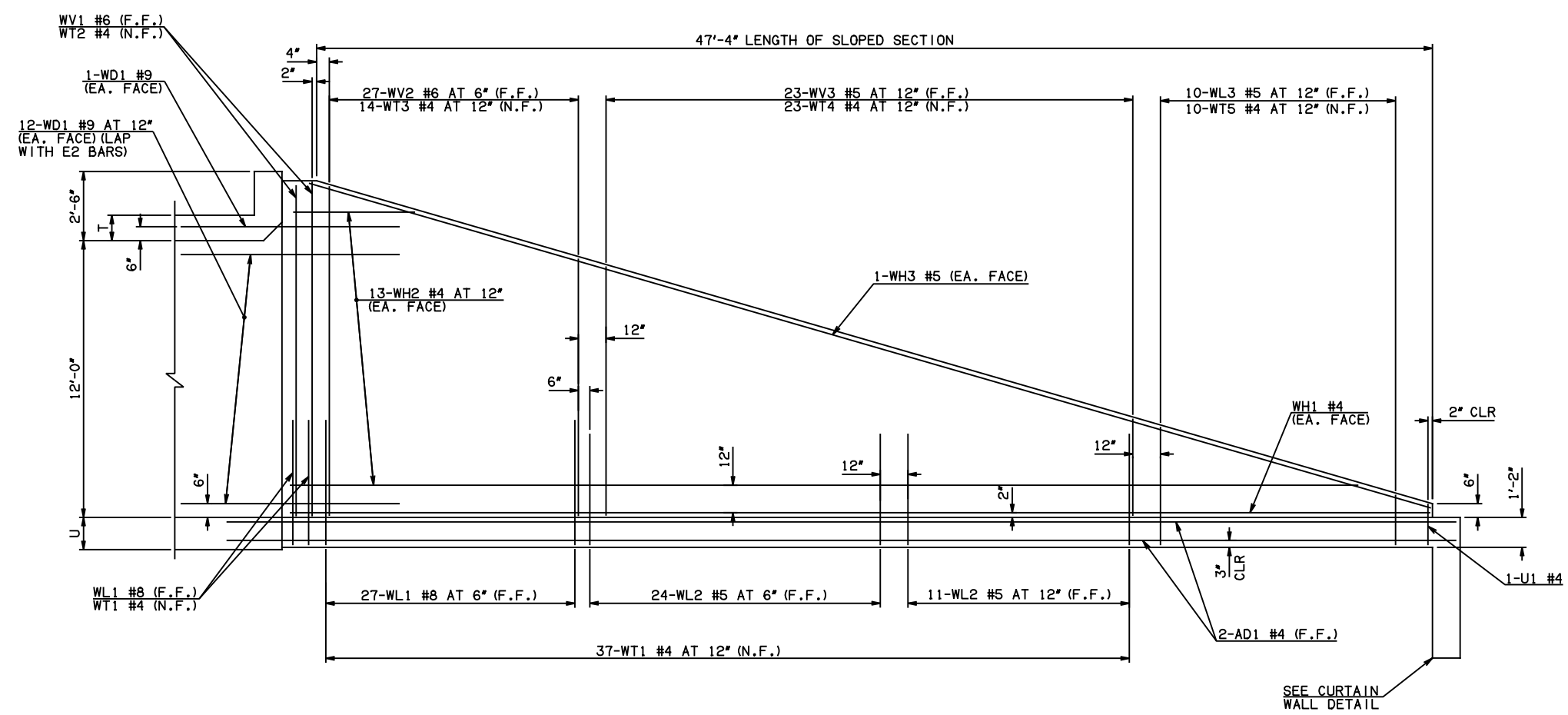


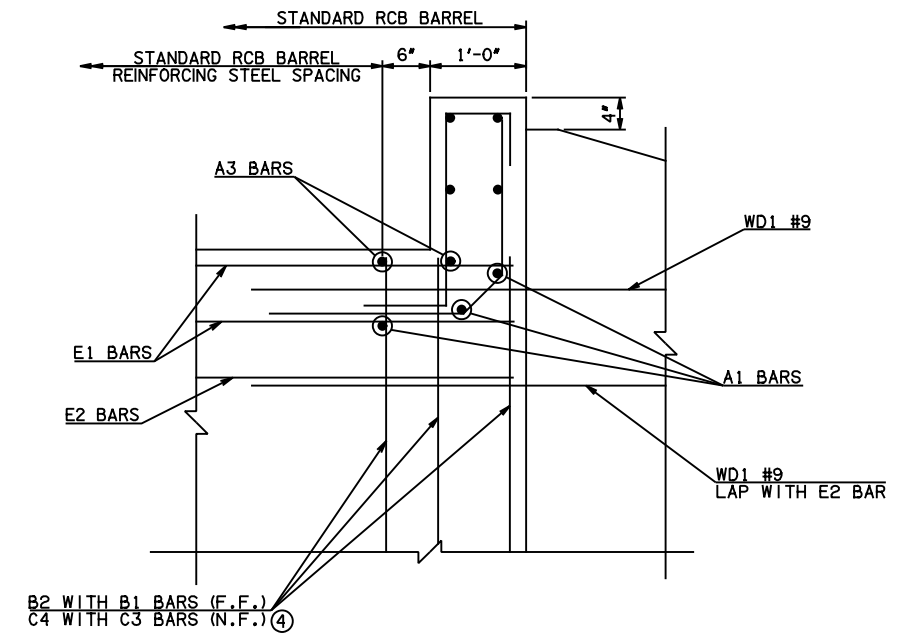
DESCRIPTION	REVISIONS	DATE

④ NOTE: TO CONSTRUCT ONE END SECTION AS SHOWN, THE FOLLOWING BARS ARE REQUIRED IN ADDITION TO THOSE CALLED IN THE RCB BARREL STANDARD:  
 2-C3 BARS  
 2-C4 BARS  
 ADDITIONAL WEIGHT IS INCLUDED IN QUANTITIES.

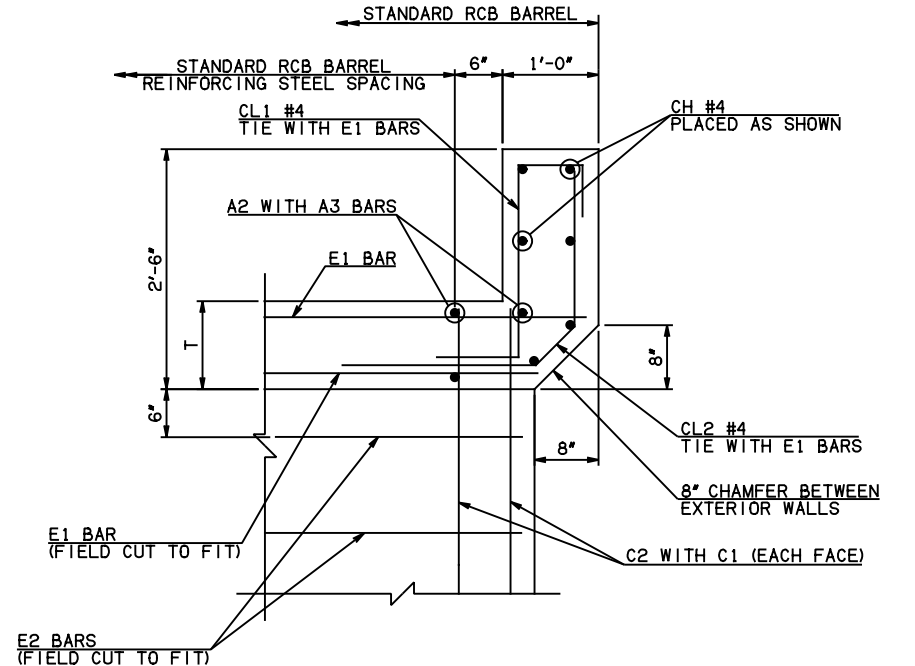


NOTE: F.F. = FAR FACE  
 N.F. = NEAR FACE

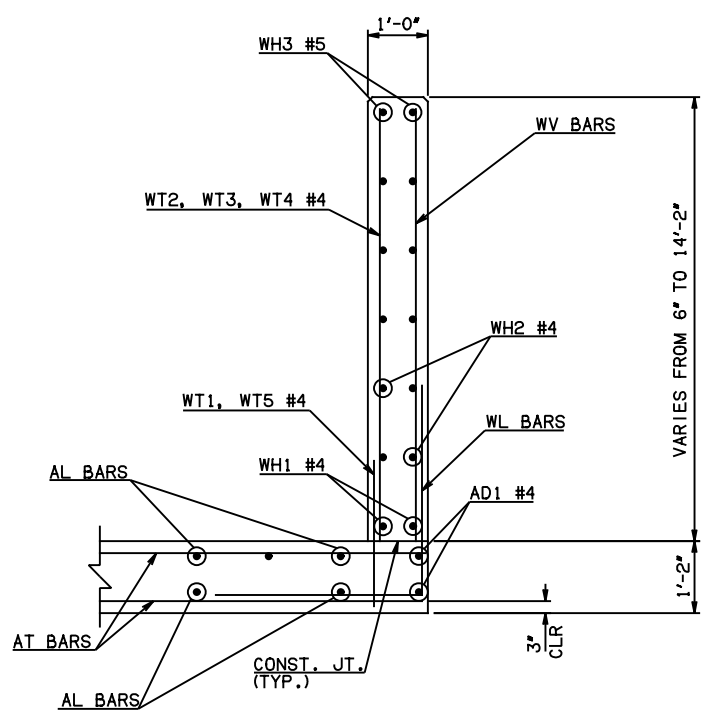
WING ELEVATION



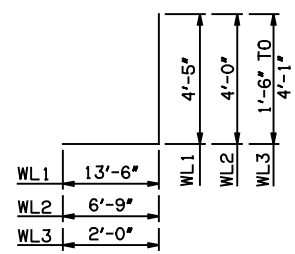
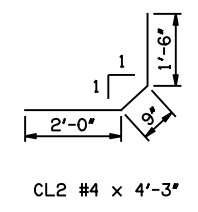
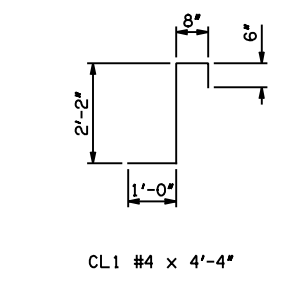
HEADWALL DETAIL AT EXTERIOR WALL



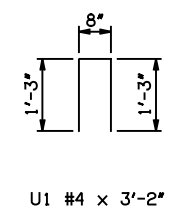
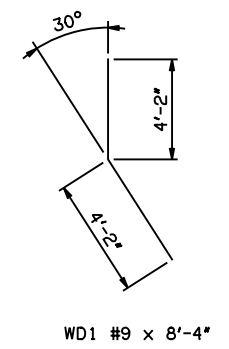
HEADWALL DETAIL AT INTERIOR WALL



TYPICAL SECTION THRU WING



WL1 #8 x 17'-11"  
 WL2 #5 x 10'-9"  
 WL3 #5 x 4'-9 1/2" AVG.



APPROVED BY BRIDGE ENGINEER *Scott J. Smith* DATE 4/2/10

**OKLAHOMA DEPT. OF TRANSPORTATION**  
**BRIDGE STANDARD (ENGLISH)**  
 RCB CULVERTS - END SECTION DETAILS  
 DOUBLE CELL - 12'-0" HEIGHT - 0°  
 SHEET NO. 2 OF 2

2009 SPECIFICATIONS RCB-E2-H12-0-2 01E  
 B-619E