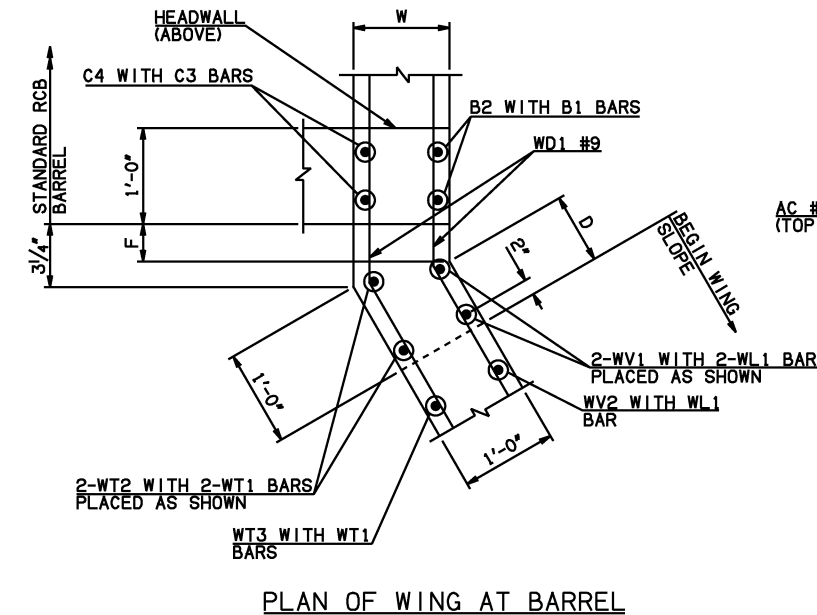
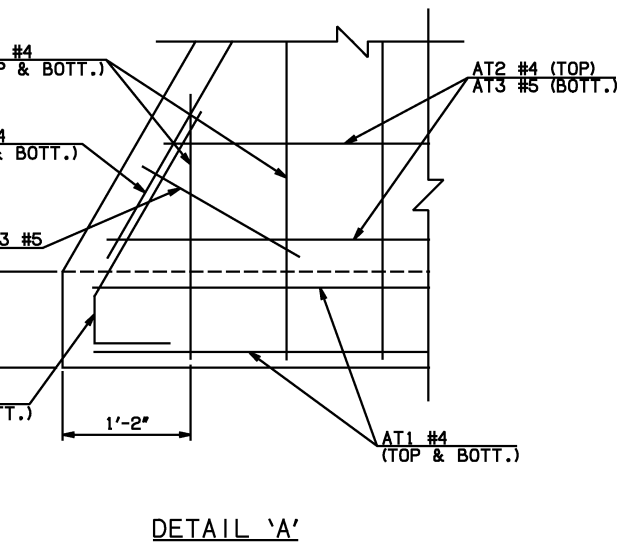
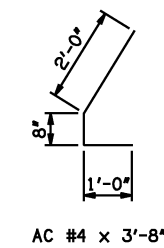


DESCRIPTION	REVISIONS	DATE

WINGWALL DIMENSIONS			
SPAN	W	D	F
12'	12"	8 3/4"	0
14'	12"	8 3/4"	0
16'	13"	6 3/4"	1 3/4"
18'	14"	4 3/4"	3 1/2"
20'	15"	2 3/4"	5 1/4"

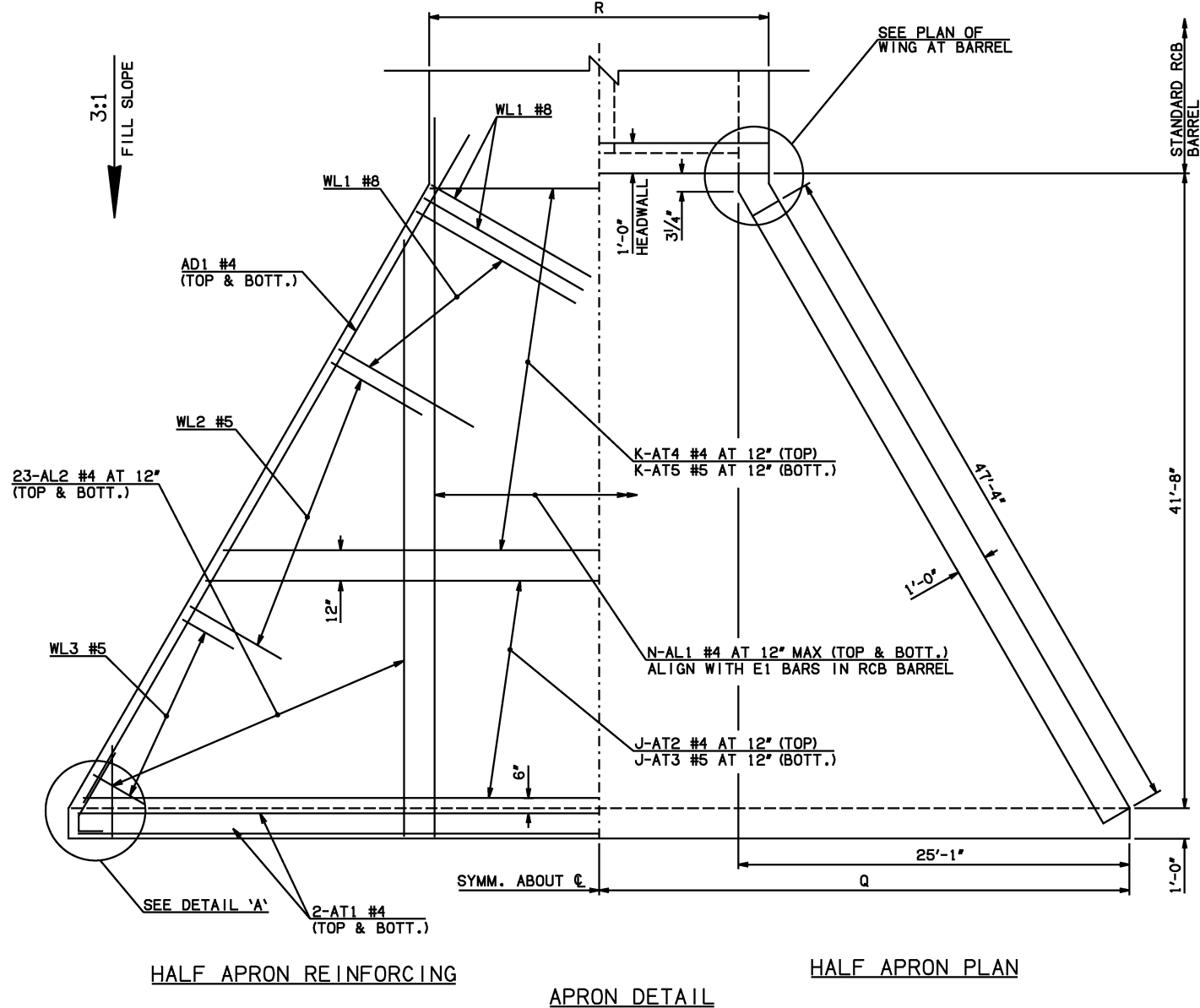


APRON VARIABLES						
SPAN	DIM. R	DIM. Q	QTY. J	QTY. K	QTY. N	
12'	27'-0"	37'-7"	13	29	30	
14'	31'-0"	39'-7"	16	26	34	
16'	35'-2"	41'-7"	20	22	38	
18'	39'-4"	43'-7"	23	19	42	
20'	43'-6"	45'-7"	27	15	46	



WINGWALL BAR LIST					
ONE WINGWALL SHOWN; TWO REQUIRED					
MARK	SIZE	QTY.	FORM	LENGTH	REMARKS
WD1	#9	26	BNT	8'-4"	
WH1	#4	2	STR	48'-2"	
WH2	#4	26	STR	24'-7 1/2" AVG.	3'-10" TO 45'-5"
WH3	#5	2	STR	49'-1"	
WL1	#8	29	BNT	17'-11"	
WL2	#5	35	BNT	10'-9"	
WL3	#5	10	BNT	4'-9 1/2" AVG.	3'-6" TO 6'-1"
WT1	#4	39	STR	2'-10"	
WT2	#4	2	STR	14'-0"	
WT3	#4	14	STR	11'-11 1/2" AVG.	10'-1" TO 13'-10"
WT4	#4	23	STR	6'-8" AVG.	3'-6" TO 9'-10"
WT5	#4	10	STR	2'-9 1/2" AVG.	1'-6" TO 4'-1"
WV1	#6	2	STR	14'-0"	
WV2	#6	27	STR	11'-11 1/2" AVG.	10'-1" TO 13'-10"
WV3	#5	23	STR	6'-8" AVG.	3'-6" TO 9'-10"
U1	#4	1	BNT	3'-2"	

- ① 4-SETS OF 23-AL2 BARS REQUIRED
- ② 2-SETS OF 13-WH2 BARS REQUIRED
- ③ INCLUDES 2'-6" LAP



APRON AND HEADWALL BAR LIST

APRON AND HEADWALL BAR LIST																	
ONE APRON AND ONE HEADWALL SHOWN																	
MARK	SIZE	FORM	12' SPAN			14' SPAN			16' SPAN			18' SPAN			20' SPAN		
			QTY.	LENGTH	REMARKS	QTY.	LENGTH	REMARKS	QTY.	LENGTH	REMARKS	QTY.	LENGTH	REMARKS	QTY.	LENGTH	REMARKS
AC	#4	BNT	4	3'-8"		4	3'-8"		4	3'-8"		4	3'-8"		4	3'-8"	
AD1	#4	STR	4	50'-2"		4	50'-2"		4	50'-2"		4	50'-2"		4	50'-2"	
AL1	#4	STR	60	44'-6"		68	44'-6"		76	44'-6"		84	44'-6"		92	44'-6"	
AL2	#4	STR	92	21'-6 1/2" AVG.	2'-6" TO 40'-7"	92	21'-6 1/2" AVG.	2'-6" TO 40'-7"	92	21'-6 1/2" AVG.	2'-6" TO 40'-7"	92	21'-6 1/2" AVG.	2'-6" TO 40'-7"	92	21'-6 1/2" AVG.	2'-6" TO 40'-7"
AT1	#4	STR	4	77'-4" ③		4	81'-4" ③		4	85'-4" ③		4	89'-4" ③		4	93'-4" ③	
AT2	#4	STR	13	69'-10 1/2" AVG.	62'-11" TO 76'-10" ③	16	72'-2" AVG.	63'-6" TO 80'-10" ③	20	73'-10" AVG.	62'-10" TO 84'-10" ③	23	76'-1 1/2" AVG.	63'-5" TO 88'-10" ③	27	77'-9 1/2" AVG.	62'-9" TO 92'-10" ③
AT3	#5	STR	13	69'-10 1/2" AVG.	62'-11" TO 76'-10" ③	16	72'-2" AVG.	63'-6" TO 80'-10" ③	20	73'-10" AVG.	62'-10" TO 84'-10" ③	23	76'-1 1/2" AVG.	63'-5" TO 88'-10" ③	27	77'-9 1/2" AVG.	62'-9" TO 92'-10" ③
AT4	#4	STR	29	43'-1" AVG.	26'-11" TO 59'-3"	26	45'-4 1/2" AVG.	30'-11" TO 59'-10"	22	47'-0 1/2" AVG.	34'-11" TO 59'-2"	19	49'-4" AVG.	38'-11" TO 59'-9"	15	51'-0" AVG.	42'-11" TO 59'-1"
AT5	#5	STR	29	43'-1" AVG.	26'-11" TO 59'-3"	26	45'-4 1/2" AVG.	30'-11" TO 59'-10"	22	47'-0 1/2" AVG.	34'-11" TO 59'-2"	19	49'-4" AVG.	38'-11" TO 59'-9"	15	51'-0" AVG.	42'-11" TO 59'-1"
CH	#4	STR	4	26'-8"		4	30'-8"		4	34'-10"		4	39'-0"		4	43'-2"	
CL1	#4	BNT	30	4'-4"		34	4'-4"		38	4'-4"		42	4'-4"		46	4'-4"	
CL2	#4	BNT	30	4'-3"		34	4'-3"		38	4'-3"		42	4'-3"		46	4'-3"	

QUANTITIES						
ITEM	UNIT	12' SPAN	14' SPAN	16' SPAN	18' SPAN	20' SPAN
CLASS AA CONCRETE	CY	122.80	130.10	137.70	145.10	152.40
REINFORCING STEEL	LB	15790.00	16370.00	16970.00	17550.00	18140.00

NOTE: QUANTITIES ABOVE ARE FOR ONE END SECTION, WHICH IS COMPRISED OF ONE HEADWALL, ONE APRON, AND TWO WINGWALLS. INCLUDED IN REINFORCING STEEL PAY ITEM QUANTITY IS THE WEIGHT OF ADDITIONAL RCB BARREL REINFORCING STEEL REQUIRED AS SHOWN.

APPROVED BY BRIDGE ENGINEER *Scott A. Smith* DATE 4/2/10

**OKLAHOMA DEPT. OF TRANSPORTATION**  
**BRIDGE STANDARD (ENGLISH)**  
 RCB CULVERTS - END SECTION DETAILS  
 DOUBLE CELL - 12'-0" HEIGHT - 0°  
 SHEET NO. 1 OF 2

2009 SPECIFICATIONS | RCB-E2-H12-0-1 | 01E | B-618E