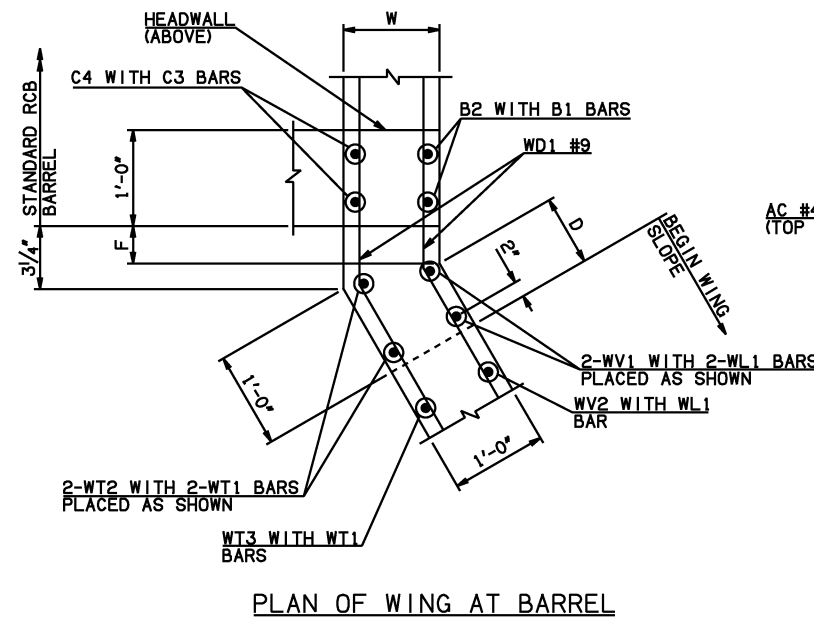
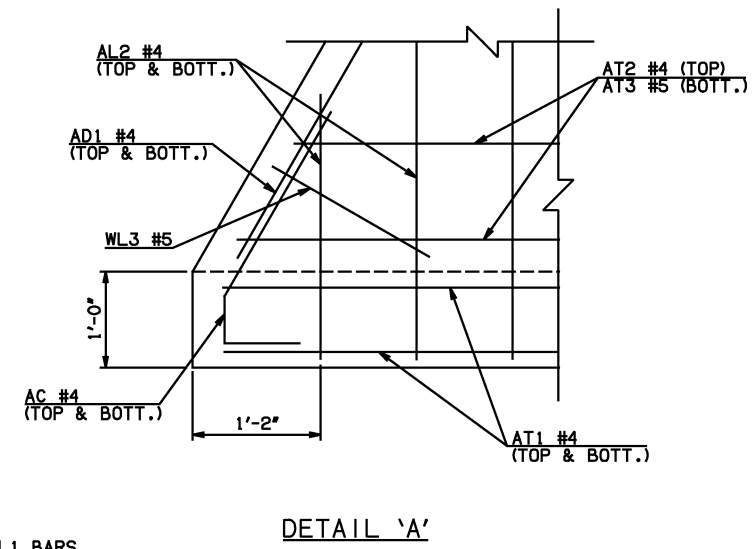
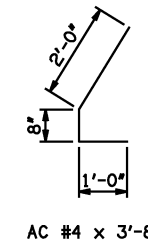


DESCRIPTION	REVISIONS	DATE

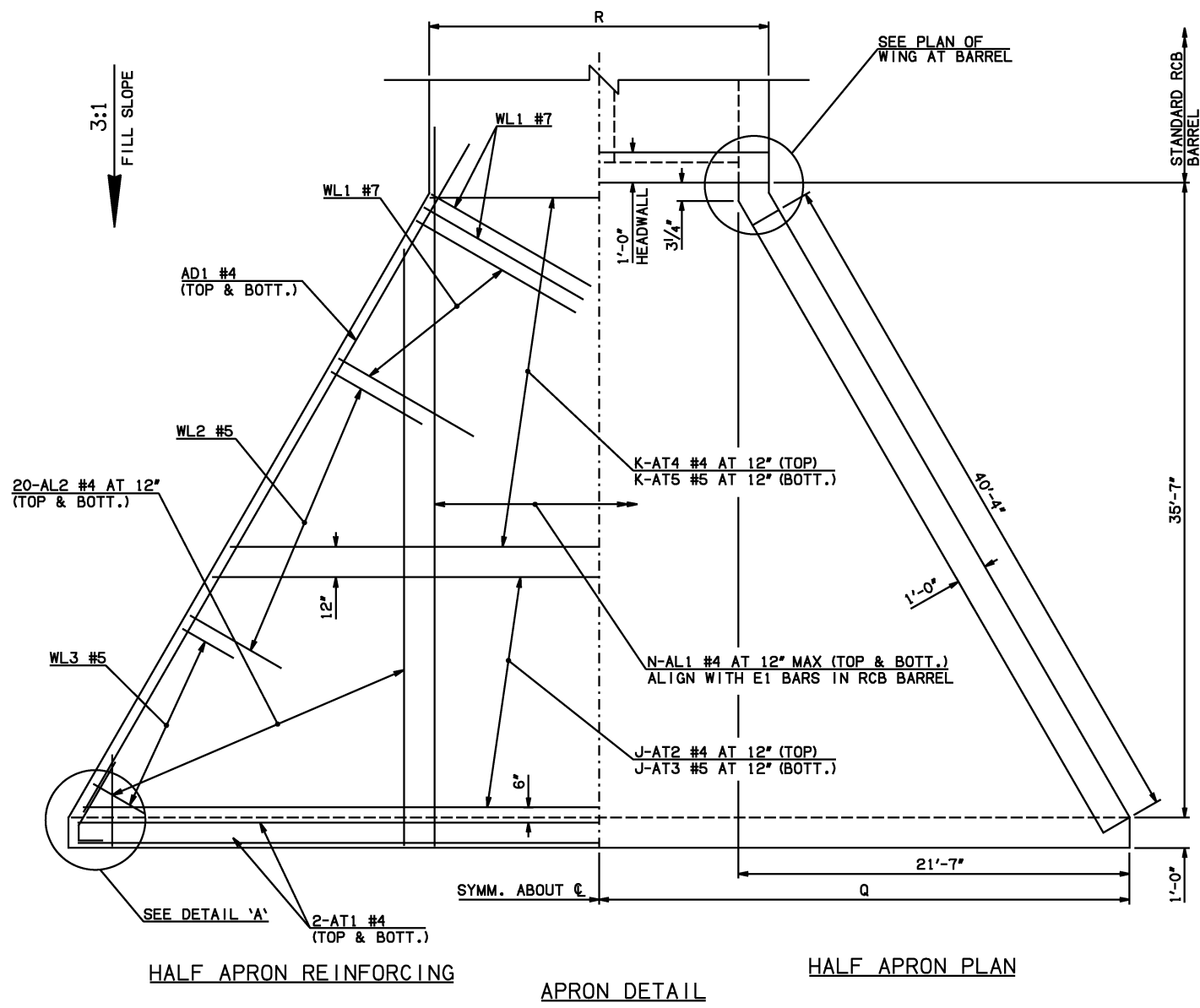
WINGWALL DIMENSIONS			
SPAN	W	D	F
10'	12"	8 3/4"	0
12'	12"	8 3/4"	0
14'	12"	8 3/4"	0
16'	13"	6 3/4"	1 1/4"
18'	14"	4 3/4"	3 1/2"
20'	15"	2 3/4"	5 1/4"



APRON VARIABLES						
SPAN	DIM. R	DIM. Q	QTY. J	QTY. K	QTY. N	
10'	23'-0"	32'-1"	3	33	26	
12'	27'-0"	34'-1"	7	29	30	
14'	31'-0"	36'-1"	10	26	34	
16'	35'-2"	38'-1"	14	22	38	
18'	39'-4"	40'-1"	17	19	42	
20'	43'-6"	42'-1"	21	15	46	



WINGWALL BAR LIST						
ONE WINGWALL SHOWN; TWO REQUIRED						
MARK	SIZE	QTY.	FORM	LENGTH	REMARKS	
WD1	#9	22	BNT	8'-4"		
WH1	#4	2	STR	41'-2"		
WH2	#4	22	STR	21'-1 1/2" AVG.	3'-10" TO 38'-5"	
WH3	#5	2	STR	41'-9"		
WL1	#7	21	BNT	14'-5"		
WL2	#5	31	BNT	10'-3"		
WL3	#5	10	BNT	4'-8 1/2" AVG.	3'-5" TO 6'-0"	
WT1	#4	32	STR	2'-10"		
WT2	#4	2	STR	12'-0"		
WT3	#4	10	STR	10'-6 1/2" AVG.	9'-3" TO 11'-10"	
WT4	#4	20	STR	6'-3" AVG.	3'-6" TO 9'-0"	
WT5	#4	10	STR	2'-8 1/2" AVG.	1'-5" TO 4'-0"	
WV1	#5	2	STR	12'-0"		
WV2	#5	19	STR	10'-6 1/2" AVG.	9'-3" TO 11'-10"	
WV3	#5	20	STR	6'-3" AVG.	3'-6" TO 9'-0"	
U1	#4	1	BNT	3'-0"		



APRON AND HEADWALL BAR LIST																				
ONE APRON AND ONE HEADWALL SHOWN																				
MARK	SIZE	FORM	10' SPAN			12' SPAN			14' SPAN			16' SPAN			18' SPAN			20' SPAN		
			QTY.	LENGTH	REMARKS	QTY.	LENGTH	REMARKS	QTY.	LENGTH	REMARKS	QTY.	LENGTH	REMARKS	QTY.	LENGTH	REMARKS	QTY.	LENGTH	REMARKS
AC	#4	BNT	4	3'-8"		4	3'-8"		4	3'-8"		4	3'-8"		4	3'-8"		4	3'-8"	
AD1	#4	STR	4	43'-2"		4	43'-2"		4	43'-2"		4	43'-2"		4	43'-2"		4	43'-2"	
AL1	#4	STR	52	38'-5"		60	38'-5"		68	38'-5"		76	38'-5"		84	38'-5"		92	38'-5"	
AL2	#4	STR	80	18'-11 1/2" AVG.	2'-6" TO 35'-5"	80	18'-11 1/2" AVG.	2'-6" TO 35'-5"	80	18'-11 1/2" AVG.	2'-6" TO 35'-5"	80	18'-11 1/2" AVG.	2'-6" TO 35'-5"	80	18'-11 1/2" AVG.	2'-6" TO 35'-5"	80	18'-11 1/2" AVG.	2'-6" TO 35'-5"
AT1	#4	STR	4	66'-4"	③	4	70'-4"	③	4	74'-4"	③	4	78'-4"	③	4	82'-4"	③	4	86'-4"	③
AT2	#4	STR	3	64'-8" AVG.	63'-6" TO 65'-10" ③	7	66'-4" AVG.	62'-10" TO 69'-10" ③	10	68'-7 1/2" AVG.	63'-5" TO 73'-10" ③	14	70'-3 1/2" AVG.	62'-9" TO 77'-10" ③	17	72'-7" AVG.	63'-4" TO 81'-10" ③	21	74'-3" AVG.	62'-8" TO 85'-10" ③
AT3	#5	STR	3	64'-8" AVG.	63'-6" TO 65'-10" ③	7	66'-4" AVG.	62'-10" TO 69'-10" ③	10	68'-7 1/2" AVG.	63'-5" TO 73'-10" ③	14	70'-3 1/2" AVG.	62'-9" TO 77'-10" ③	17	72'-7" AVG.	63'-4" TO 81'-10" ③	21	74'-3" AVG.	62'-8" TO 85'-10" ③
AT4	#4	STR	33	41'-4 1/2" AVG.	22'-11" TO 59'-10"	29	43'-1" AVG.	26'-11" TO 59'-3"	26	45'-4" AVG.	30'-11" TO 59'-9"	22	47'-0 1/2" AVG.	34'-11" TO 59'-2"	19	49'-3 1/2" AVG.	38'-11" TO 59'-8"	15	51'-0" AVG.	42'-11" TO 59'-1"
AT5	#5	STR	33	41'-4 1/2" AVG.	22'-11" TO 59'-10"	29	43'-1" AVG.	26'-11" TO 59'-3"	26	45'-4" AVG.	30'-11" TO 59'-9"	22	47'-0 1/2" AVG.	34'-11" TO 59'-2"	19	49'-3 1/2" AVG.	38'-11" TO 59'-8"	15	51'-0" AVG.	42'-11" TO 59'-1"
CH	#4	STR	4	22'-8"		4	26'-8"		4	30'-8"		4	34'-10"		4	39'-0"		4	43'-2"	
CL1	#4	BNT	26	4'-4"		30	4'-4"		34	4'-4"		38	4'-4"		42	4'-4"		46	4'-4"	
CL2	#4	BNT	26	4'-3"		30	4'-3"		34	4'-3"		38	4'-3"		42	4'-3"		46	4'-3"	

- ① 4-SETS OF 20-AL2 BARS REQUIRED
- ② 2-SETS OF 11-WH2 BARS REQUIRED
- ③ INCLUDES 2'-6" LAP

QUANTITIES							
ITEM	UNIT	10' SPAN	12' SPAN	14' SPAN	16' SPAN	18' SPAN	20' SPAN
CLASS AA CONCRETE	CY	85.40	91.40	97.40	103.30	109.20	115.00
REINFORCING STEEL	LB	10960.00	11470.00	11970.00	12500.00	13000.00	13510.00

NOTE: QUANTITIES ABOVE ARE FOR ONE END SECTION, WHICH IS COMPRISED OF ONE HEADWALL, ONE APRON, AND TWO WINGWALLS. INCLUDED IN REINFORCING STEEL PAY ITEM QUANTITY IS THE WEIGHT OF ADDITIONAL RCB BARREL REINFORCING STEEL REQUIRED AS SHOWN.

APPROVED BY BRIDGE ENGINEER *Scott Luch* DATE 4/2/10

OKLAHOMA DEPT. OF TRANSPORTATION
BRIDGE STANDARD (ENGLISH)
 RCB CULVERTS - END SECTION DETAILS
 DOUBLE CELL - 10'-0" HEIGHT - 0°
 SHEET NO. 1 OF 2

2009 SPECIFICATIONS | RCB-E2-H10-0-1 | 01E | B-614E