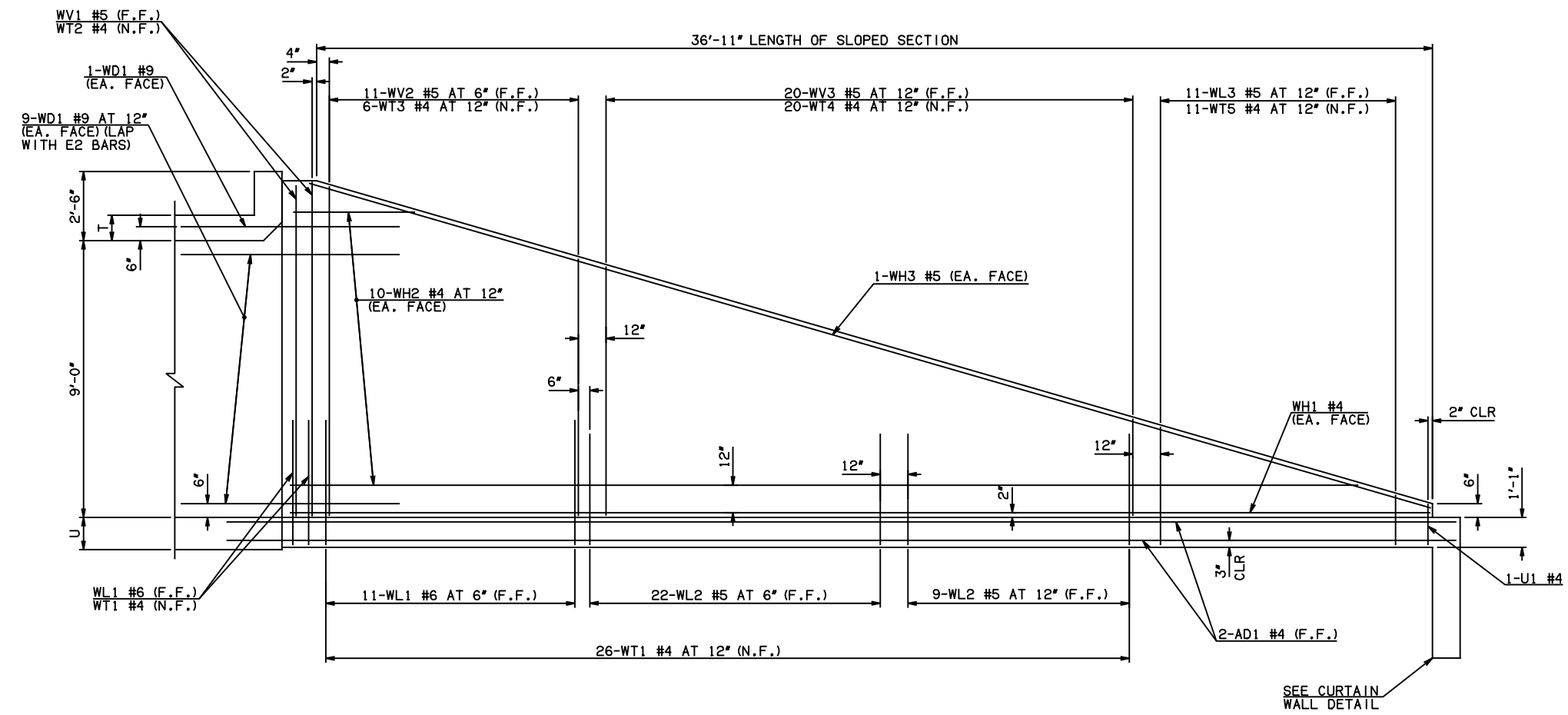


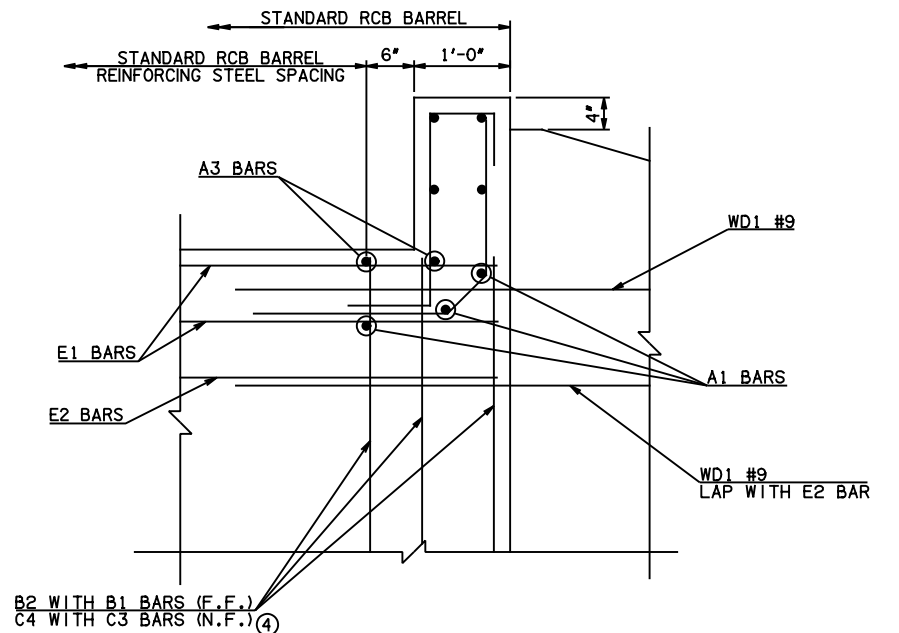
DESCRIPTION	REVISIONS	DATE

④ NOTE: TO CONSTRUCT ONE END SECTION AS SHOWN, THE FOLLOWING BARS ARE REQUIRED IN ADDITION TO THOSE CALLED IN THE RCB BARREL STANDARD:
 2-C3 BARS
 2-C4 BARS
 ADDITIONAL WEIGHT IS INCLUDED IN QUANTITIES.

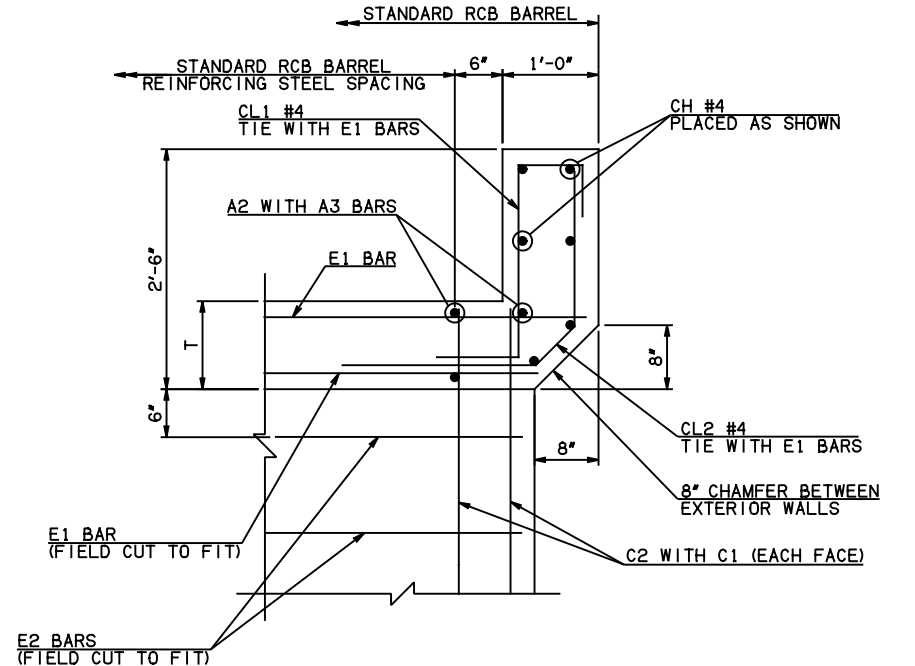


NOTE: F.F. = FAR FACE
 N.F. = NEAR FACE

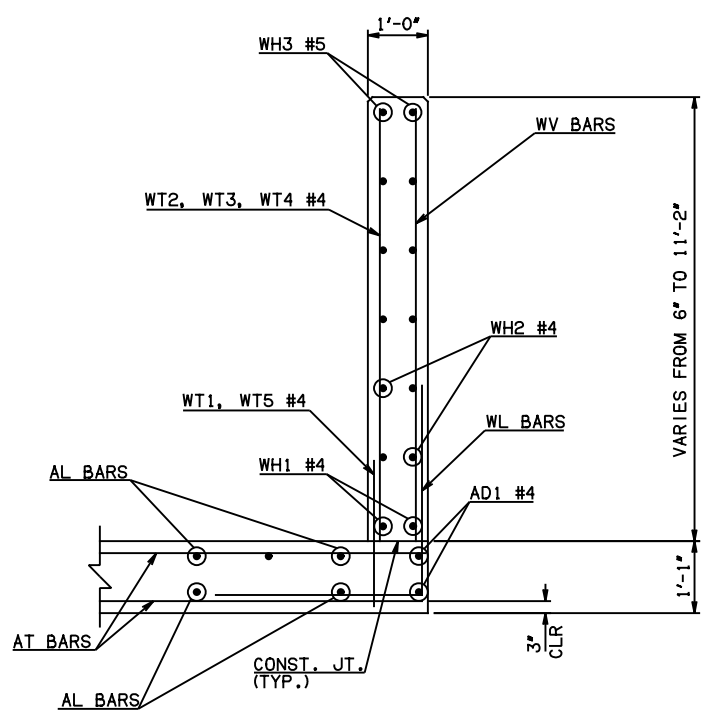
WING ELEVATION



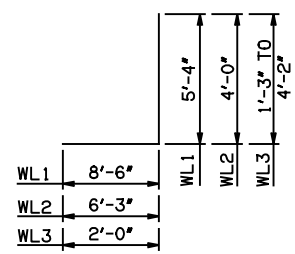
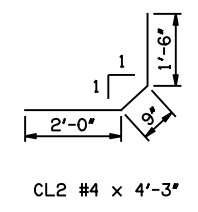
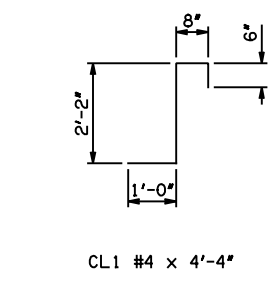
HEADWALL DETAIL AT EXTERIOR WALL



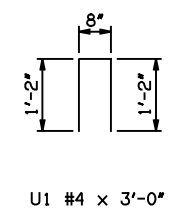
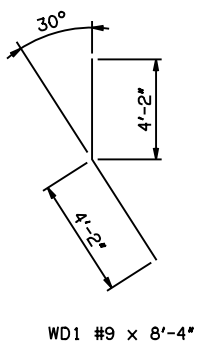
HEADWALL DETAIL AT INTERIOR WALL



TYPICAL SECTION THRU WING



WL1 #6 x 13'-10"
 WL2 #5 x 10'-3"
 WL3 #5 x 4'-8 1/2" AVG.



APPROVED BY BRIDGE ENGINEER *Scott J. Smith* DATE 4/2/10

OKLAHOMA DEPT. OF TRANSPORTATION
BRIDGE STANDARD (ENGLISH)
 RCB CULVERTS - END SECTION DETAILS
 DOUBLE CELL - 9'-0" HEIGHT - 0°
 SHEET NO. 2 OF 2

2009 SPECIFICATIONS | RCB-E2-H9-0-2 | 01E
 B-613E