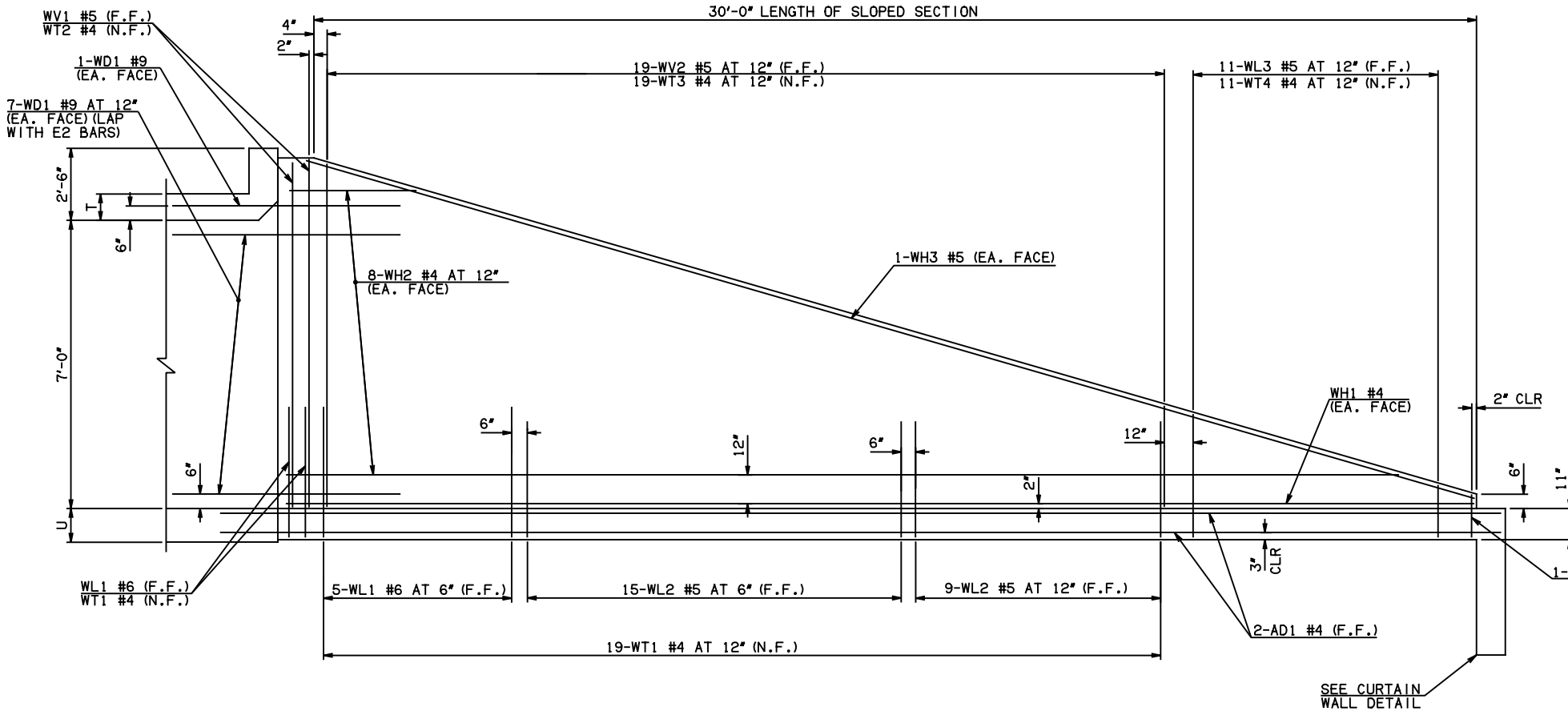


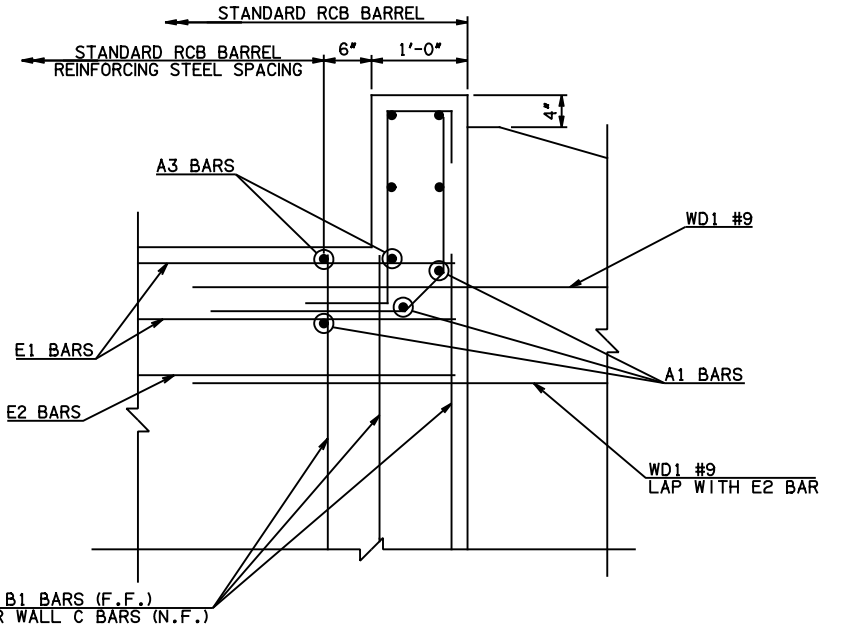
DESCRIPTION	REVISIONS	DATE



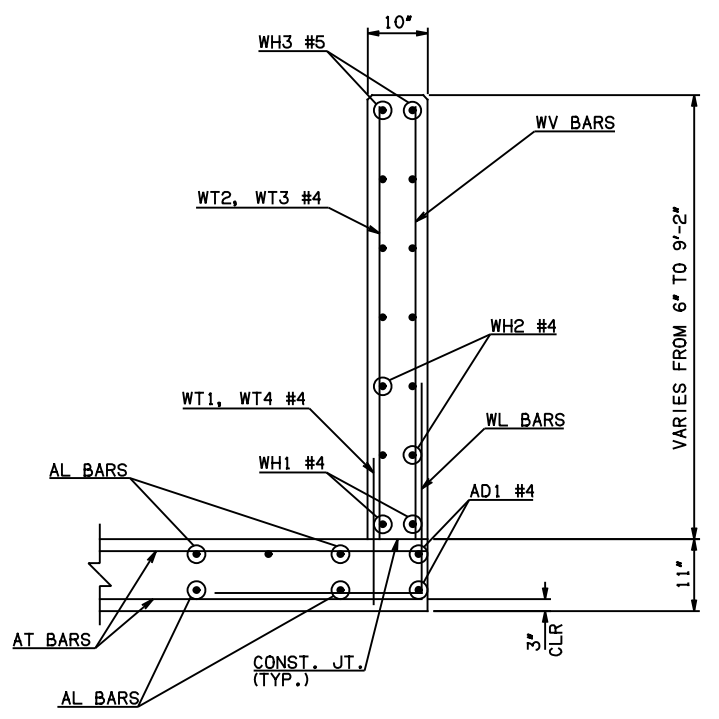
NOTE: F.F. = FAR FACE
N.F. = NEAR FACE

WING ELEVATION

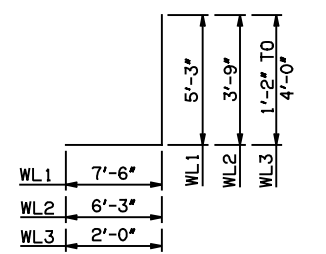
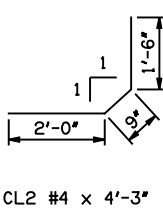
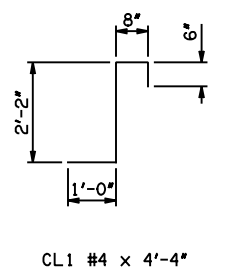
④ NOTE: TO CONSTRUCT ONE END SECTION AS SHOWN, THE FOLLOWING BARS ARE REQUIRED IN ADDITION TO THOSE CALLED IN THE RCB BARREL STANDARD:
2-EXTERIOR WALL C BARS
2-EXTERIOR WALL C DOWEL BARS
ADDITIONAL WEIGHT IS INCLUDED IN QUANTITIES.



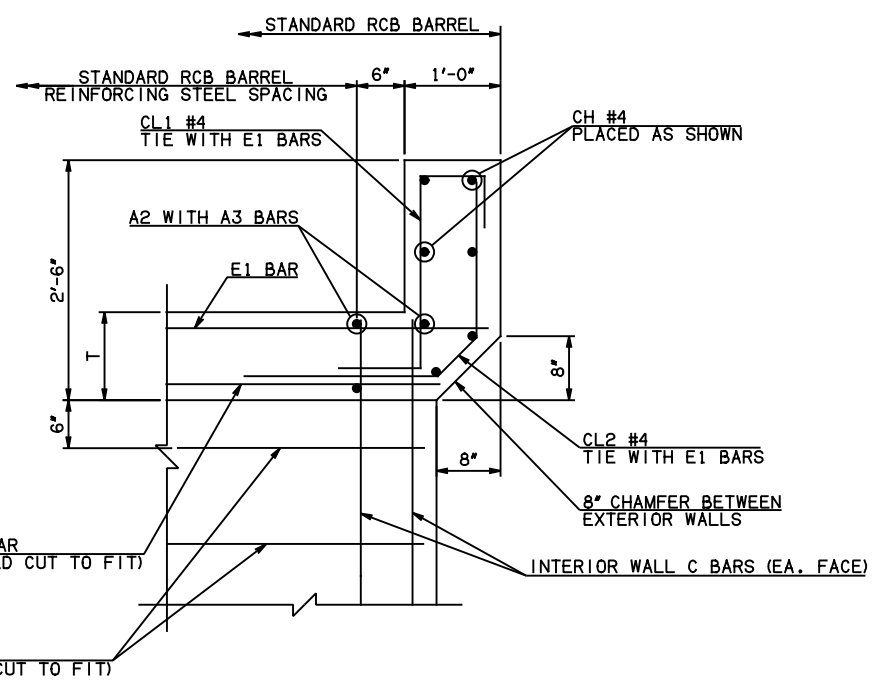
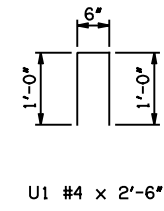
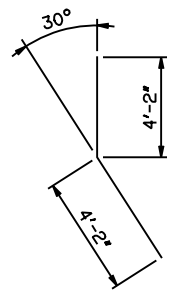
HEADWALL DETAIL AT EXTERIOR WALL



TYPICAL SECTION THRU WING



WL1 #6 x 12'-9"
WL2 #5 x 10'-0"
WL3 #5 x 4'-7" AVG.



HEADWALL DETAIL AT INTERIOR WALL

APPROVED BY BRIDGE ENGINEER *Scott J. Smith* DATE 4/2/10

OKLAHOMA DEPT. OF TRANSPORTATION
BRIDGE STANDARD (ENGLISH)
RCB CULVERTS - END SECTION DETAILS
DOUBLE CELL - 7'-0" HEIGHT - 0°
SHEET NO. 2 OF 2

2009 SPECIFICATIONS RCB-E2-H7-0-2 01E
B-609E