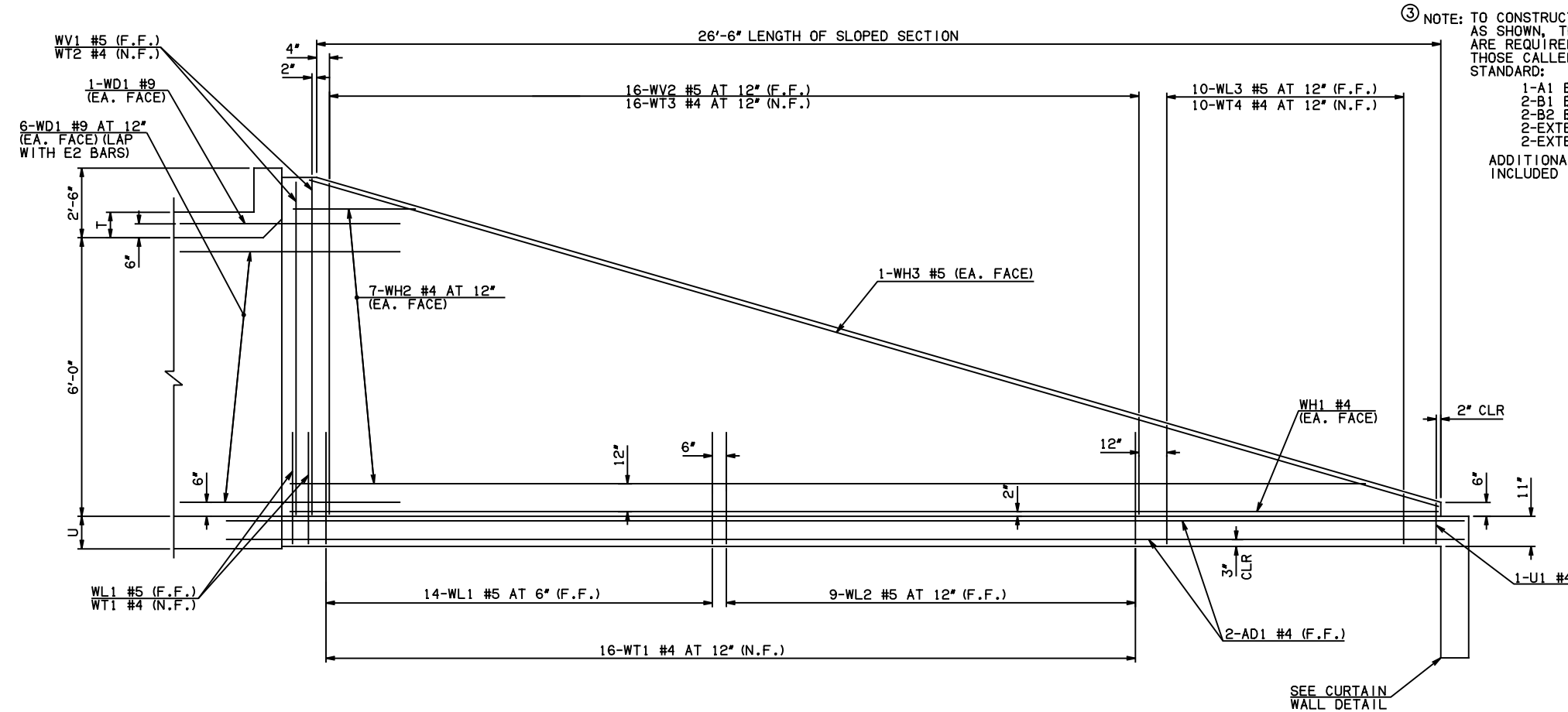
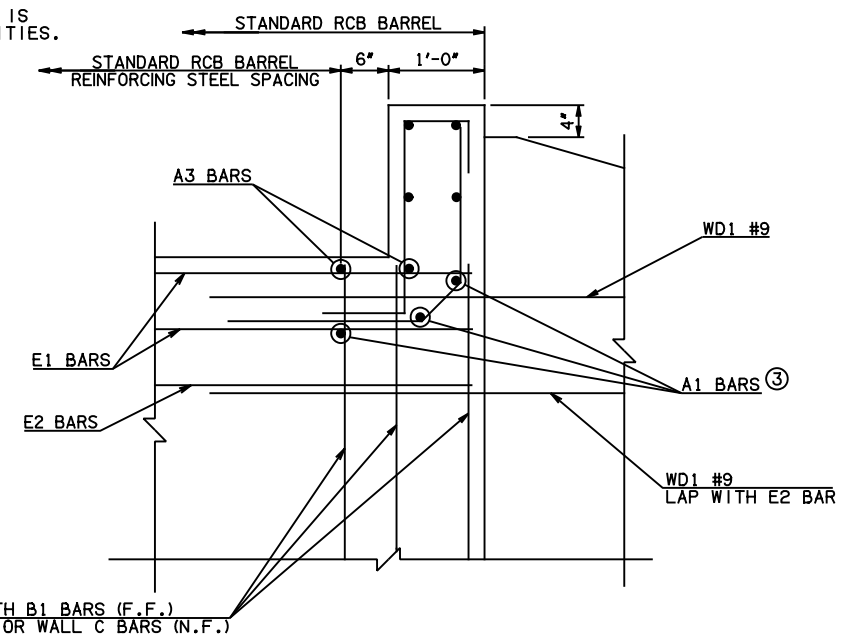


DESCRIPTION	REVISIONS	DATE



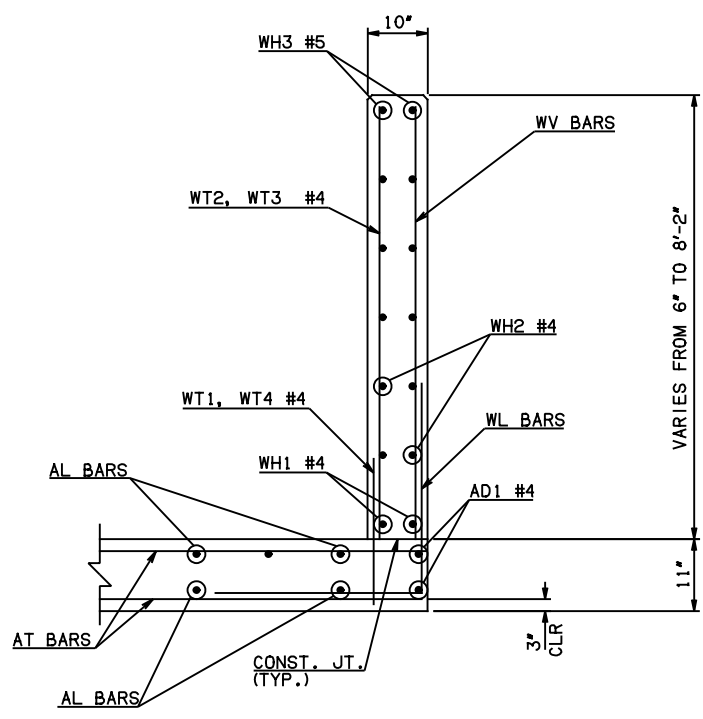
NOTE: TO CONSTRUCT ONE END SECTION AS SHOWN, THE FOLLOWING BARS ARE REQUIRED IN ADDITION TO THOSE CALLED IN THE RCB BARREL STANDARD:  
 1-A1 BAR  
 2-B1 BARS  
 2-B2 BARS  
 2-EXTERIOR WALL C BARS  
 2-EXTERIOR WALL C DOWEL BARS  
 ADDITIONAL WEIGHT IS INCLUDED IN QUANTITIES.



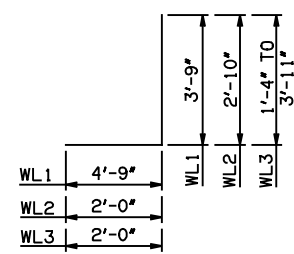
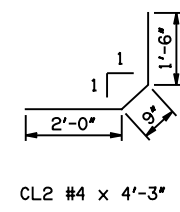
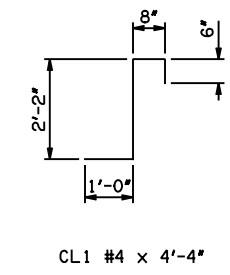
HEADWALL DETAIL AT EXTERIOR WALL

NOTE: F.F. = FAR FACE  
 N.F. = NEAR FACE

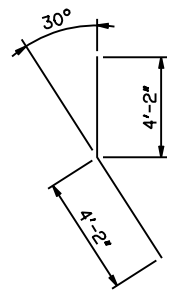
WING ELEVATION



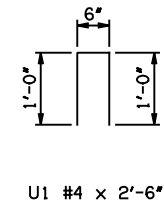
TYPICAL SECTION THRU WING



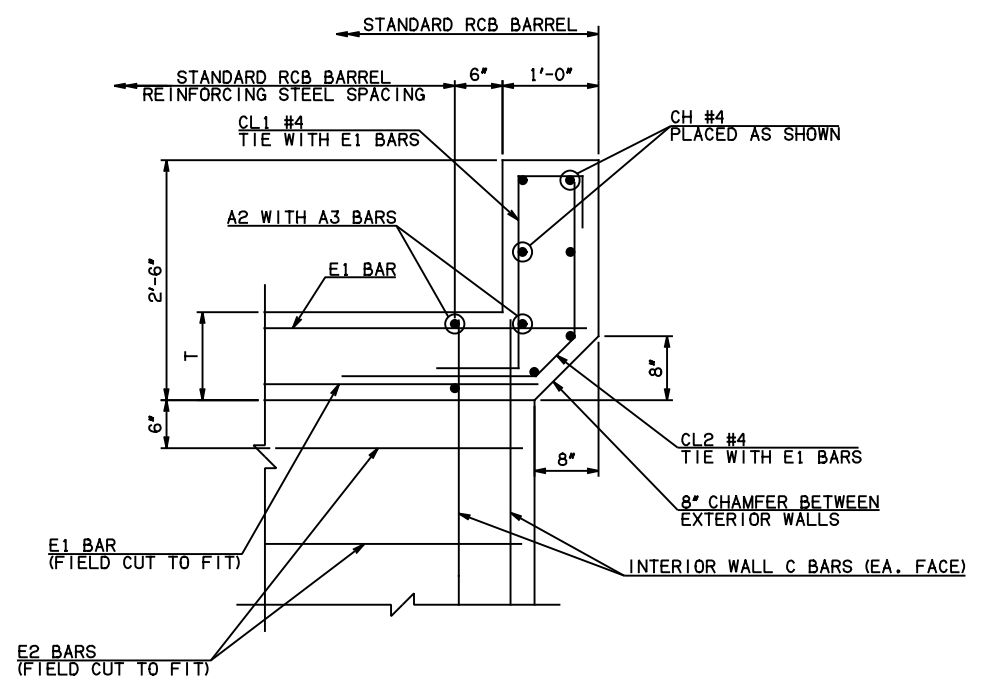
WL1 #5 x 8'-6"  
 WL2 #5 x 4'-10"  
 WL3 #5 x 4'-7 1/2" AVG.



WD1 #9 x 8'-4"



U1 #4 x 2'-6"



HEADWALL DETAIL AT INTERIOR WALL

APPROVED BY BRIDGE ENGINEER *Scott J. Smith* DATE 4/2/10

**OKLAHOMA DEPT. OF TRANSPORTATION**  
**BRIDGE STANDARD (ENGLISH)**  
 RCB CULVERTS - END SECTION DETAILS  
 DOUBLE CELL - 6'-0" HEIGHT - 0°  
 SHEET NO. 2 OF 2

2009 SPECIFICATIONS	RCB-E2-H6-0-2	01E
---------------------	---------------	-----