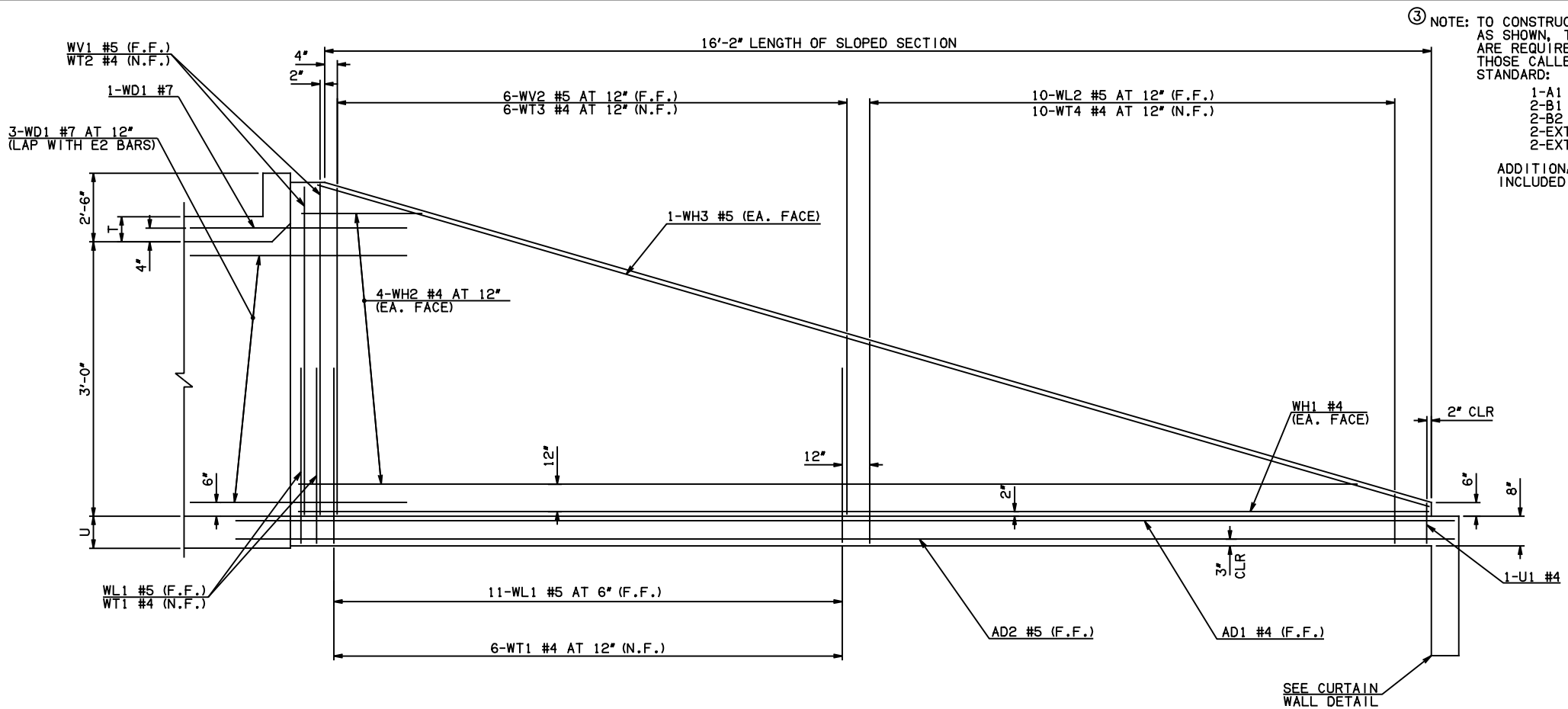


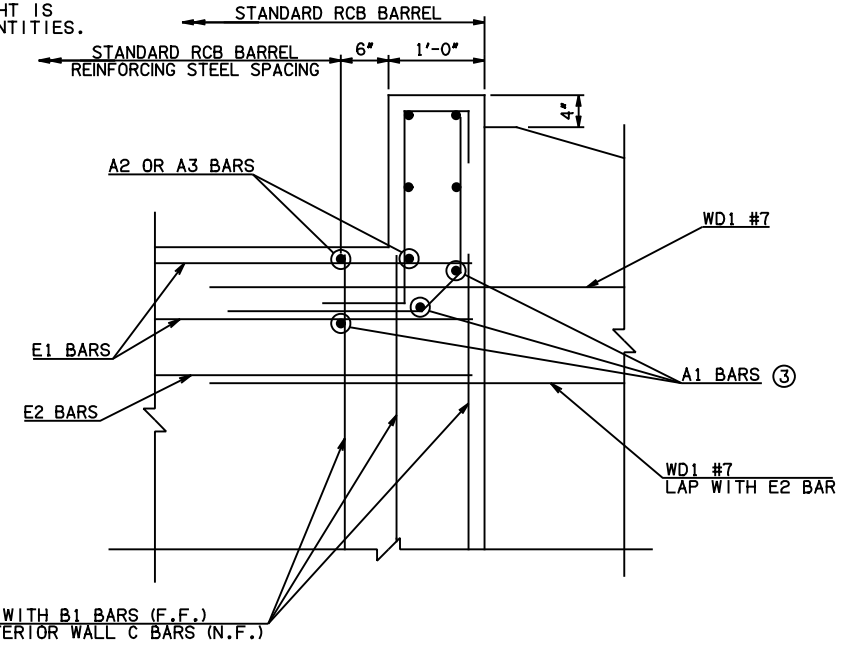
DESCRIPTION	REVISIONS	DATE



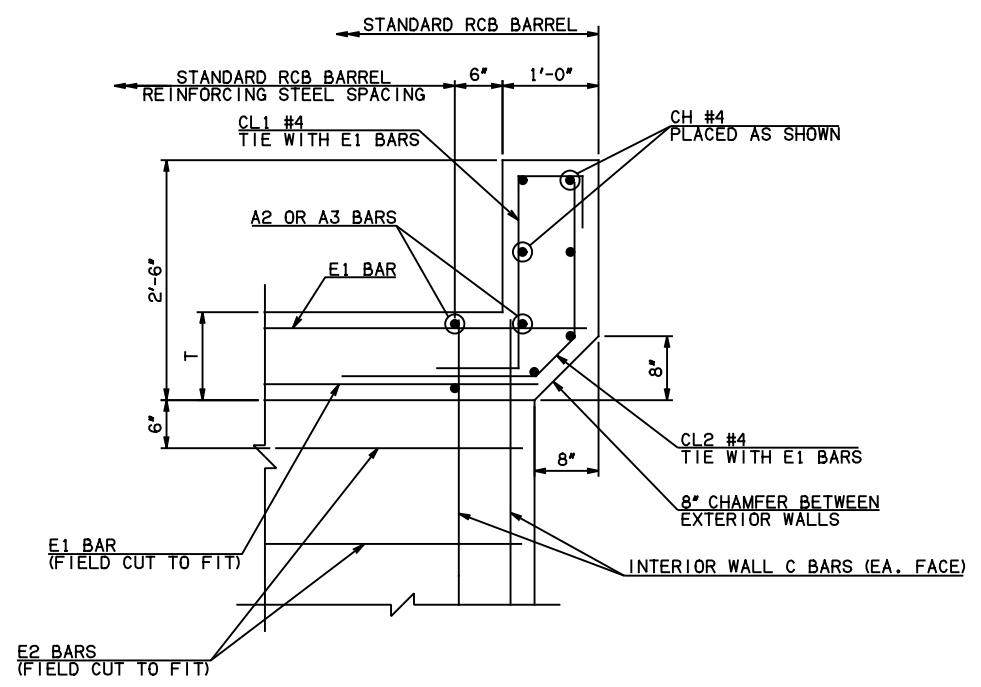
③ NOTE: TO CONSTRUCT ONE END SECTION AS SHOWN, THE FOLLOWING BARS ARE REQUIRED IN ADDITION TO THOSE CALLED IN THE RCB BARREL STANDARD:

- 1-A1 BAR
- 2-B1 BARS
- 2-B2 BARS
- 2-EXTERIOR WALL C BARS
- 2-EXTERIOR WALL C DOWEL BARS

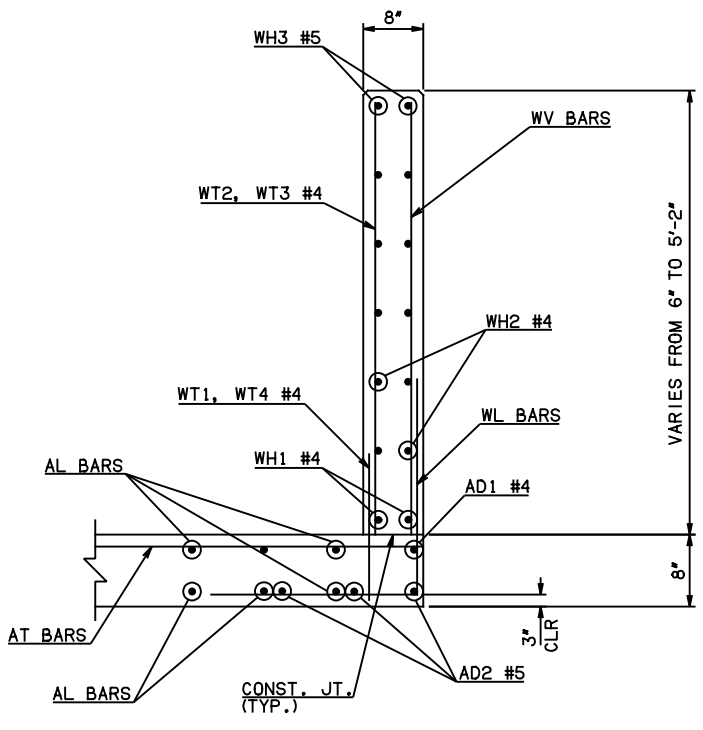
ADDITIONAL WEIGHT IS INCLUDED IN QUANTITIES.



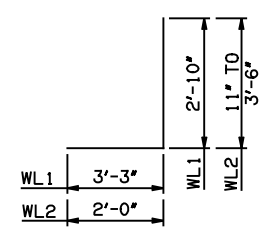
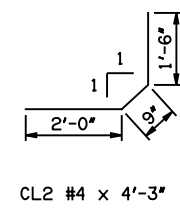
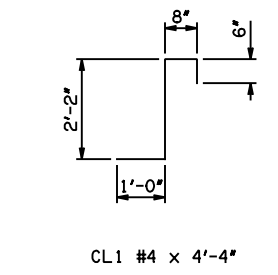
HEADWALL DETAIL AT EXTERIOR WALL



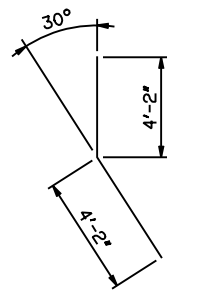
HEADWALL DETAIL AT INTERIOR WALL



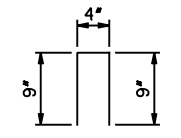
TYPICAL SECTION THRU WING



WL1 #5 x 6'-1"  
WL2 #5 x 4'-2 1/2" AVG.



WD1 #7 x 8'-4"



U1 #4 x 1'-10"

APPROVED BY BRIDGE ENGINEER *Scott J. Smith* DATE 4/2/10

**OKLAHOMA DEPT. OF TRANSPORTATION**  
**BRIDGE STANDARD (ENGLISH)**  
 RCB CULVERTS - END SECTION DETAILS  
 DOUBLE CELL - 3'-0" HEIGHT - 0°  
 SHEET NO. 2 OF 2

2009 SPECIFICATIONS	RCB-E2-H3-0-2	01E
---------------------	---------------	-----

B-601E