

NOTE: F.F. = FAR FACE
N.F. = NEAR FACE

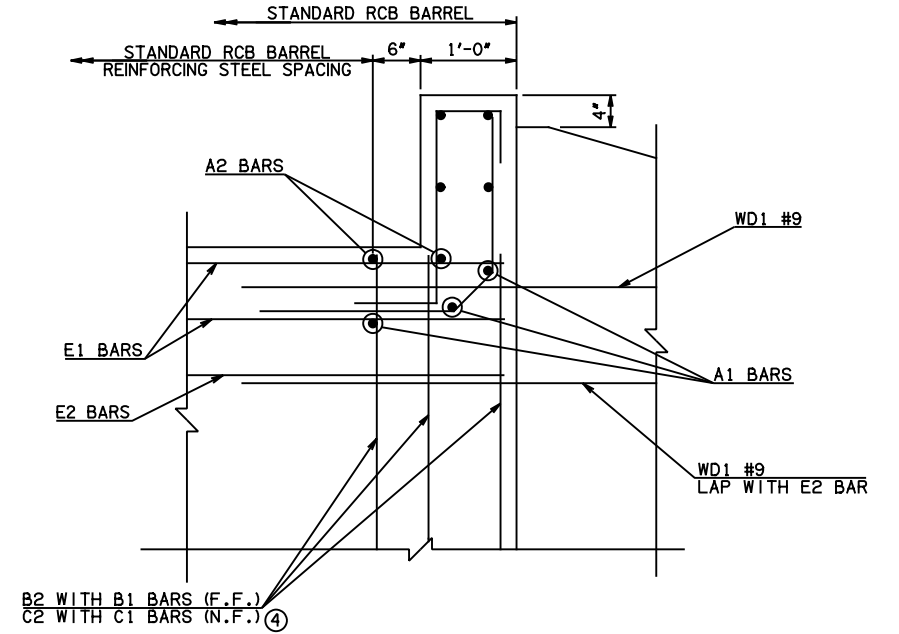
WING ELEVATION

④ NOTE: TO CONSTRUCT ONE END SECTION AS SHOWN, THE FOLLOWING BARS ARE REQUIRED IN ADDITION TO THOSE CALLED IN THE RCB BARREL STANDARD:

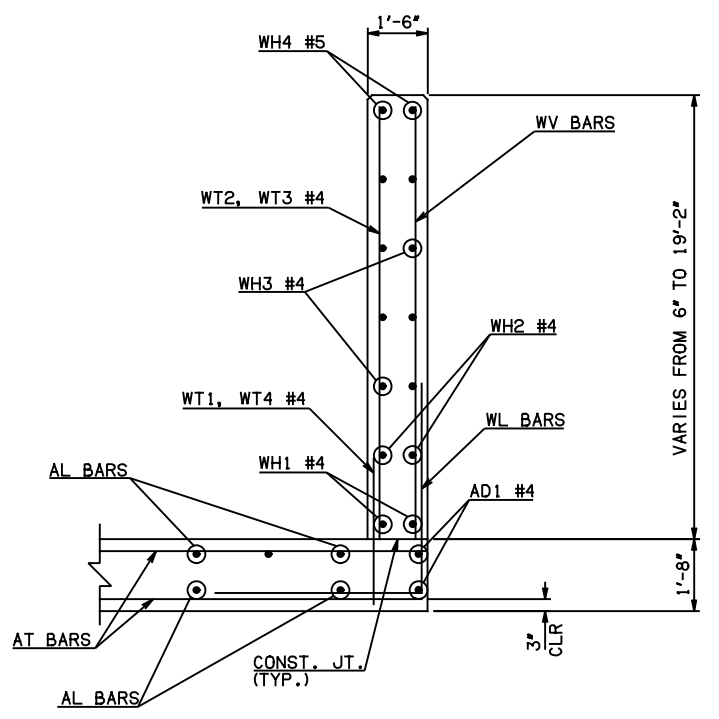
2-C1 BARS
2-C2 BARS

ADDITIONAL WEIGHT IS INCLUDED IN QUANTITIES.

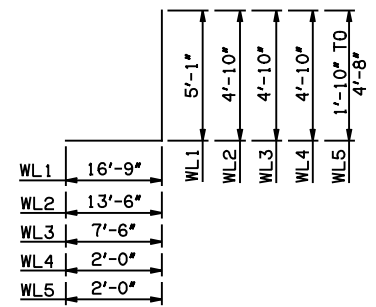
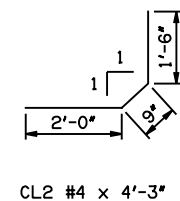
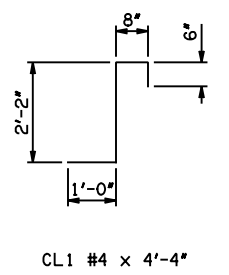
DESCRIPTION	REVISIONS	DATE



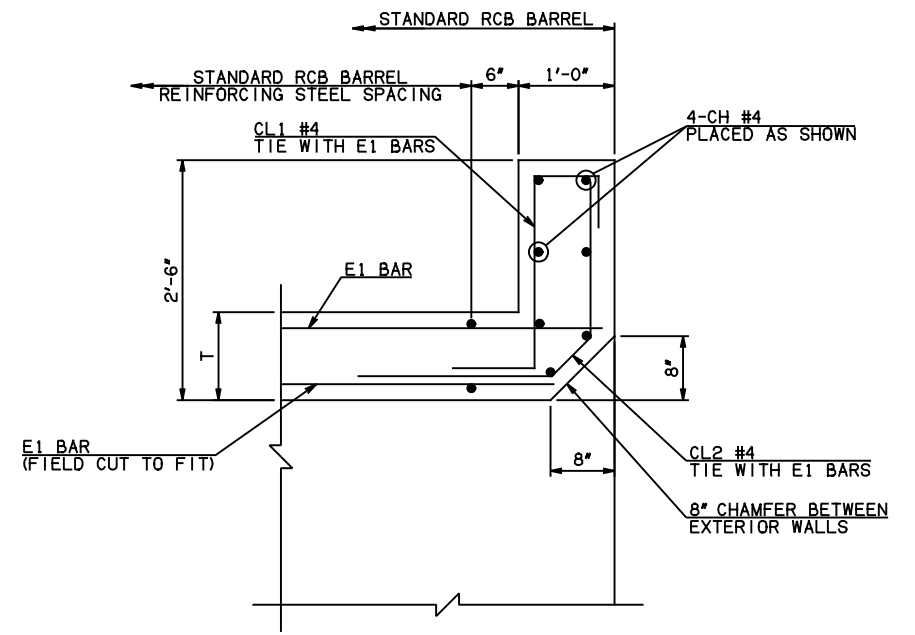
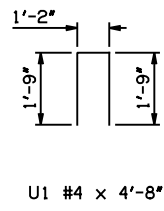
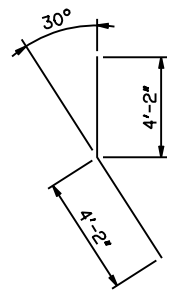
HEADWALL DETAIL AT EXTERIOR WALL



TYPICAL SECTION THRU WING



WL1 #10 x 21'-10"
WL2 #8 x 18'-4"
WL3 #5 x 12'-4"
WL4 #5 x 6'-10"
WL5 #5 x 5'-3" AVG.



HEADWALL DETAIL AT MIDSPAN

APPROVED BY BRIDGE ENGINEER *Scott J. Smith* DATE 4/2/10

OKLAHOMA DEPT. OF TRANSPORTATION
BRIDGE STANDARD (ENGLISH)
RCB CULVERTS - END SECTION DETAILS
SINGLE CELL - 17'-0" HEIGHT - 0°
SHEET NO. 2 OF 2

2009 SPECIFICATIONS RCB-E1-H17-0-2 01E
B-595E