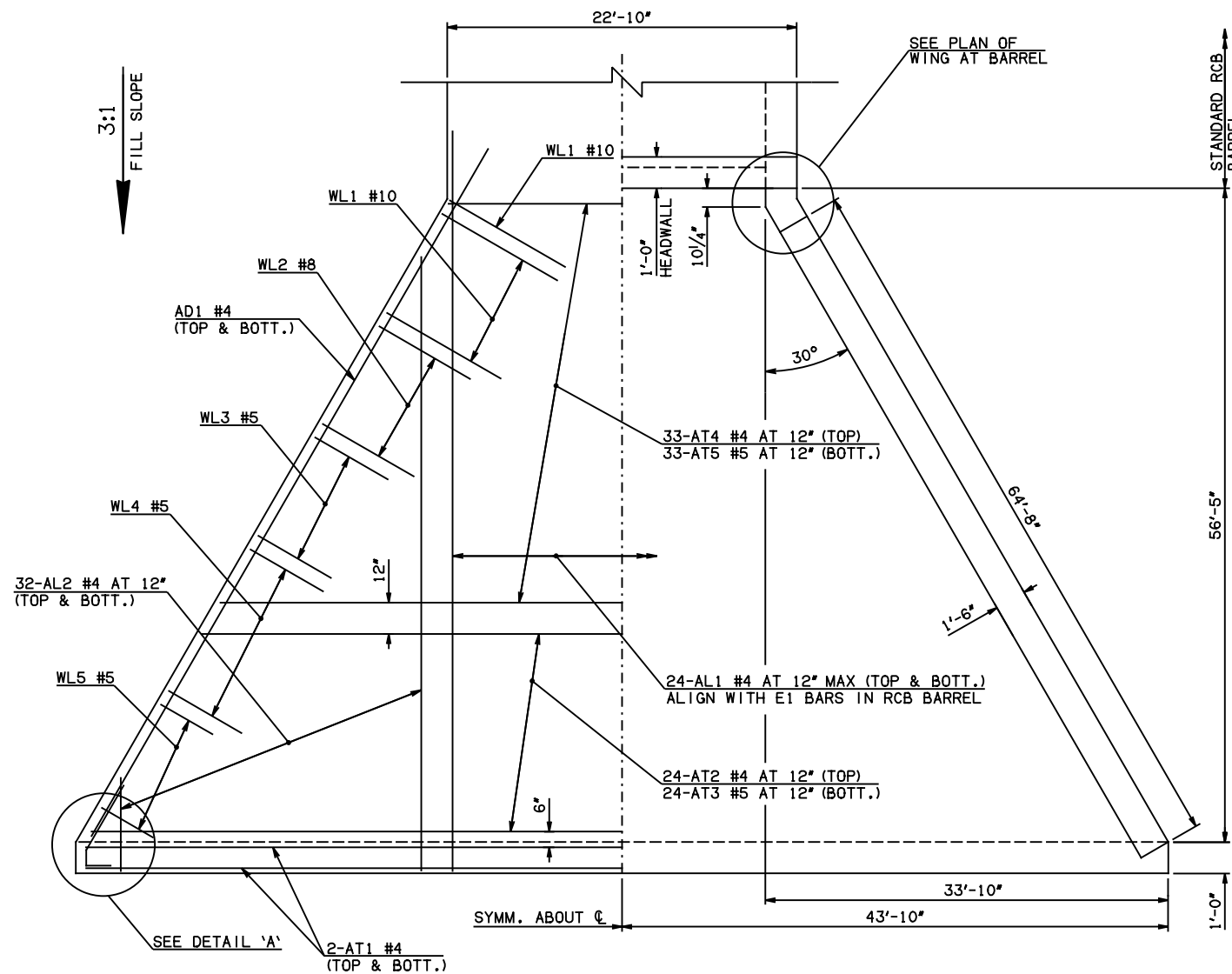


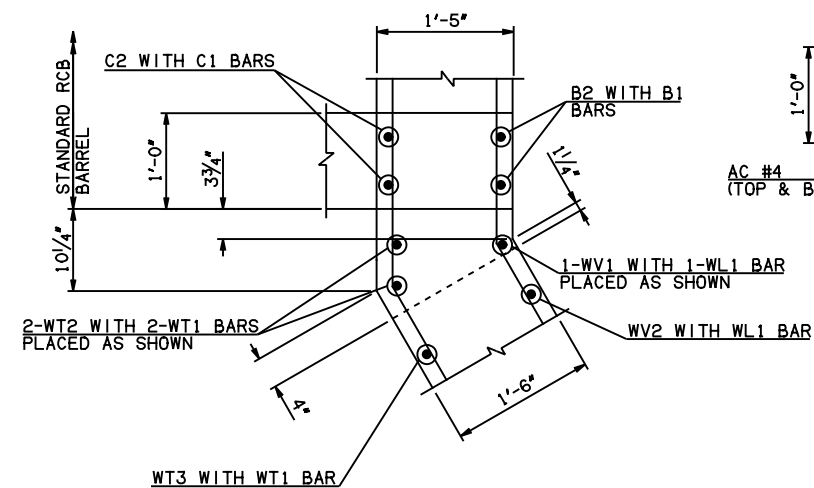
DESCRIPTION	REVISIONS	DATE



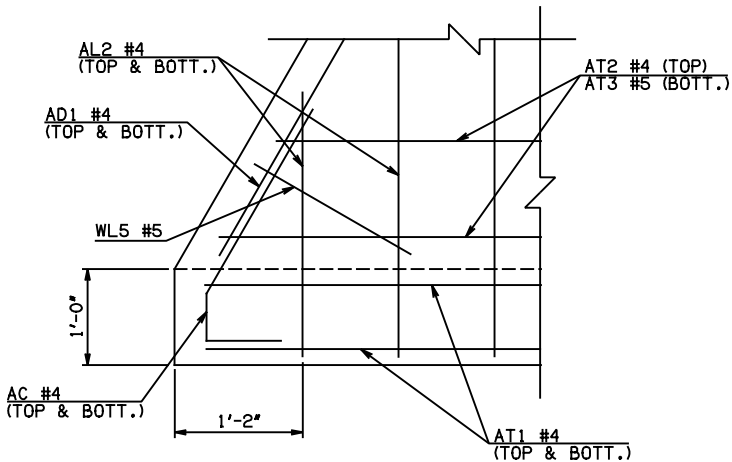
HALF APRON REINFORCING

APRON DETAIL

HALF APRON PLAN



PLAN OF WING AT BARREL



DETAIL 'A'

APRON AND HEADWALL BAR LIST					
ONE APRON AND ONE HEADWALL SHOWN					
MARK	SIZE	FORM	QTY.	LENGTH	REMARKS
AC	#4	BNT	4	3'-8"	
AD1	#4	STR	4	69'-4"	③
AL1	#4	STR	48	59'-3"	
AL2	#4	STR	128	29'-4" AVG.	2'-6" TO 56'-2"
AT1	#4	STR	4	89'-10"	
AT2	#4	STR	24	76'-0 1/2" AVG.	62'-9" TO 89'-4"
AT3	#5	STR	24	76'-0 1/2" AVG.	62'-9" TO 89'-4"
AT4	#4	STR	33	40'-7 1/2" AVG.	22'-2" TO 59'-1"
AT5	#5	STR	33	40'-7 1/2" AVG.	22'-2" TO 59'-1"
CH	#4	STR	4	22'-6"	
CL1	#4	BNT	24	4'-4"	
CL2	#4	BNT	24	4'-3"	

WINGWALL BAR LIST					
ONE WINGWALL SHOWN; TWO REQUIRED					
MARK	SIZE	QTY.	FORM	LENGTH	REMARKS
WD1	#9	36	BNT	8'-4"	
WH1	#4	2	STR	67'-4"	③
WH2	#4	2	STR	64'-7"	③
WH3	#4	34	STR	30'-10 1/2" AVG.	3'-2" TO 58'-7"
WH4	#5	2	STR	69'-7"	③
WL1	#10	18	BNT	21'-10"	
WL2	#8	33	BNT	18'-4"	
WL3	#5	27	BNT	12'-4"	
WL4	#5	15	BNT	6'-10"	
WL5	#5	11	BNT	5'-3" AVG.	3'-10" TO 6'-8"
WT1	#4	56	STR	3'-10"	
WT2	#4	2	STR	19'-0"	
WT3	#4	54	STR	11'-2 1/2" AVG.	3'-7" TO 18'-10"
WT4	#4	11	STR	3'-3" AVG.	1'-10" TO 4'-8"
WV1	#8	2	STR	19'-0"	
WV2	#8	17	STR	17'-8 1/2" AVG.	16'-7" TO 18'-10"
WV3	#6	33	STR	14'-1" AVG.	11'-9" TO 16'-5"
WV4	#5	29	STR	7'-7 1/2" AVG.	3'-7" TO 11'-8"
U1	#4	1	BNT	4'-8"	

- ① 4-SETS OF 32-AL2 BARS REQUIRED
- ② 2-SETS OF 17-WH3 BARS REQUIRED
- ③ INCLUDES 2'-6" LAP

QUANTITIES		
ITEM	UNIT	20' SPAN
CLASS AA CONCRETE	CY	270.00
REINFORCING STEEL	LB	27160.00

NOTE: QUANTITIES ABOVE ARE FOR ONE END SECTION, WHICH IS COMPRISED OF ONE HEADWALL, ONE APRON, AND TWO WINGWALLS. INCLUDED IN REINFORCING STEEL PAY ITEM QUANTITY IS THE WEIGHT OF ADDITIONAL RCB BARREL REINFORCING STEEL REQUIRED AS SHOWN.

APPROVED BY BRIDGE ENGINEER *Scott J. Smith* DATE 4/2/10

OKLAHOMA DEPT. OF TRANSPORTATION
BRIDGE STANDARD (ENGLISH)
 RCB CULVERTS - END SECTION DETAILS
 SINGLE CELL - 17'-0" HEIGHT - 0°
 SHEET NO. 1 OF 2

2009 SPECIFICATIONS RCB-E1-H17-0-1 01E
 B-594E