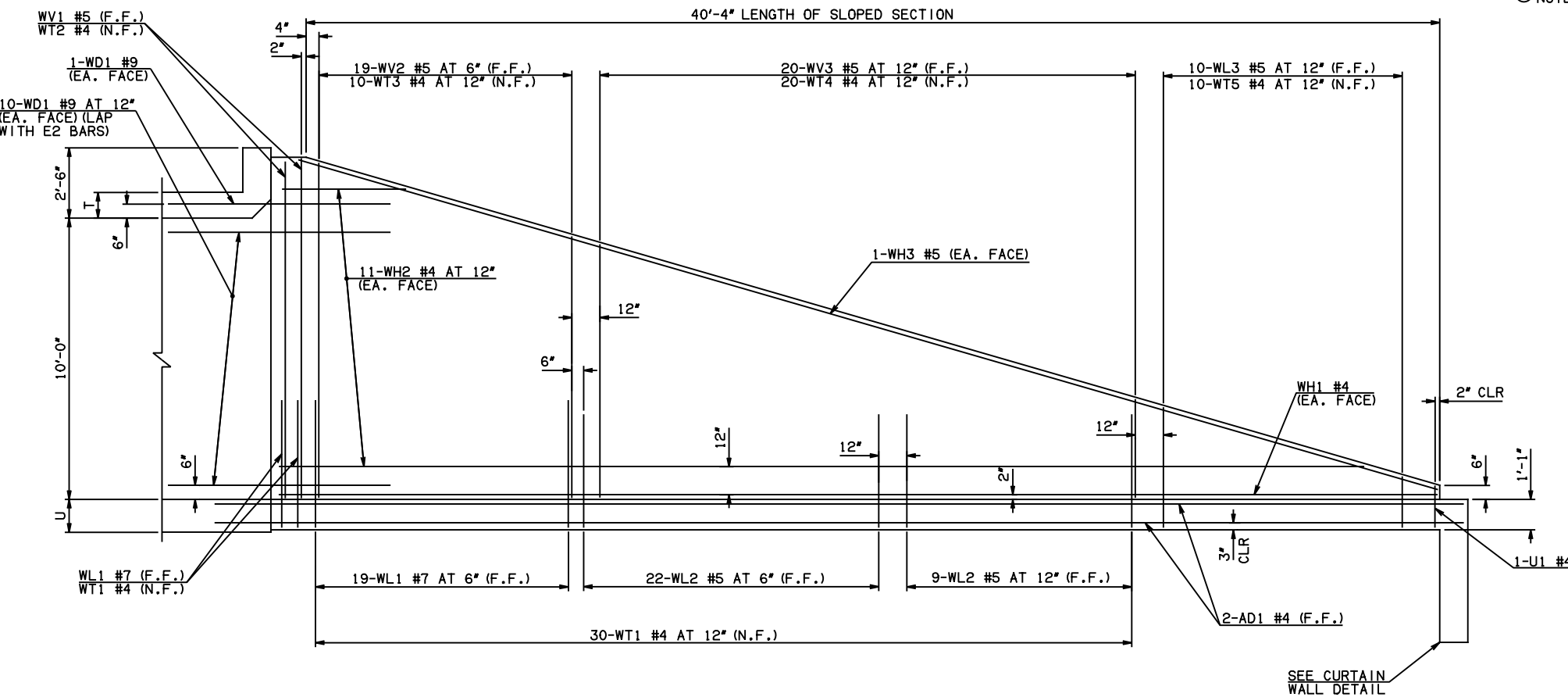


DESCRIPTION	REVISIONS	DATE

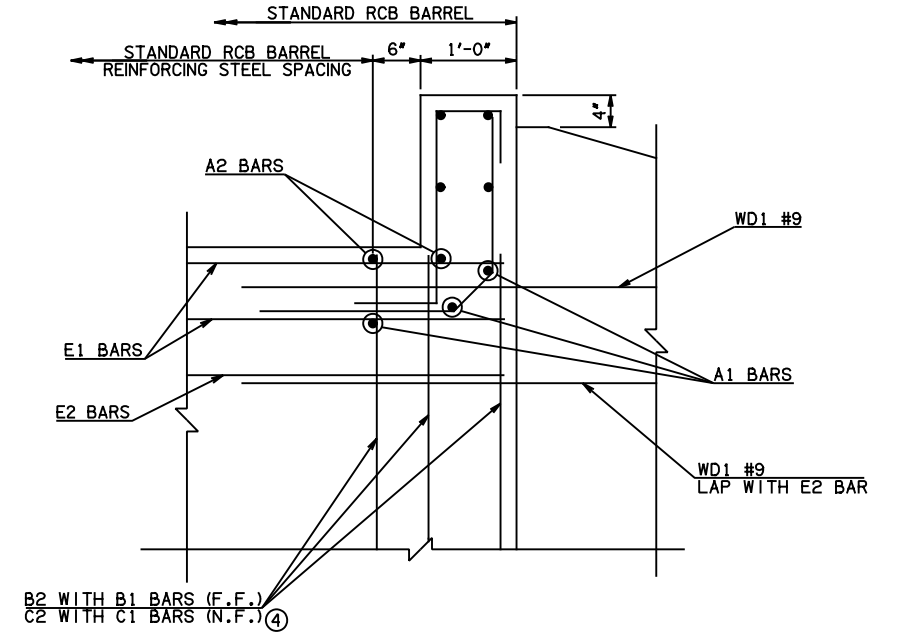


NOTE: F.F. = FAR FACE
N.F. = NEAR FACE

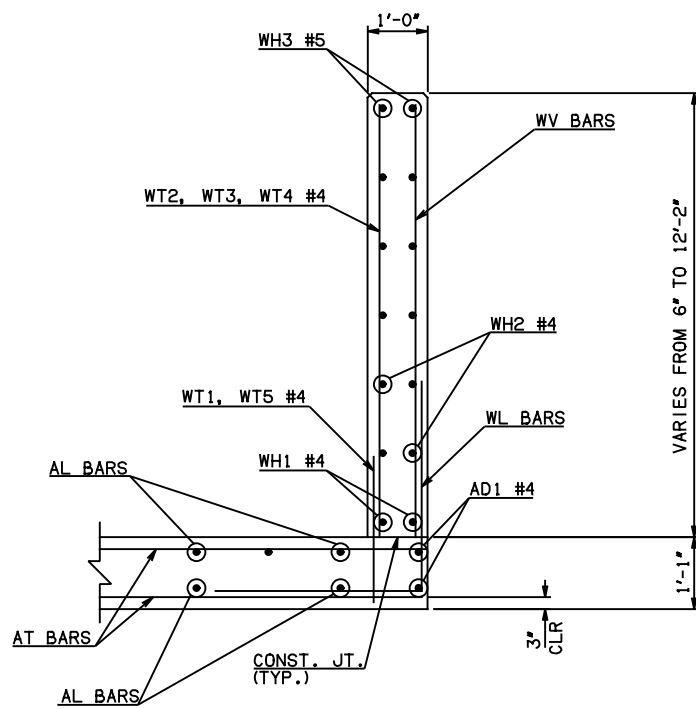
WING ELEVATION

④ NOTE: TO CONSTRUCT ONE END SECTION AS SHOWN, THE FOLLOWING BARS ARE REQUIRED IN ADDITION TO THOSE CALLED IN THE RCB BARREL STANDARD:

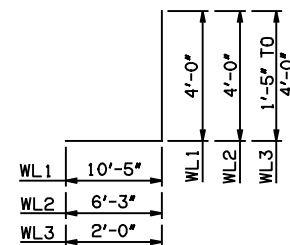
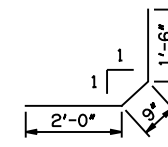
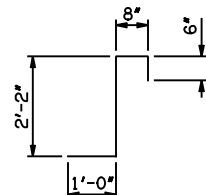
2-C1 BARS
2-C2 BARS
ADDITIONAL WEIGHT IS INCLUDED IN QUANTITIES.



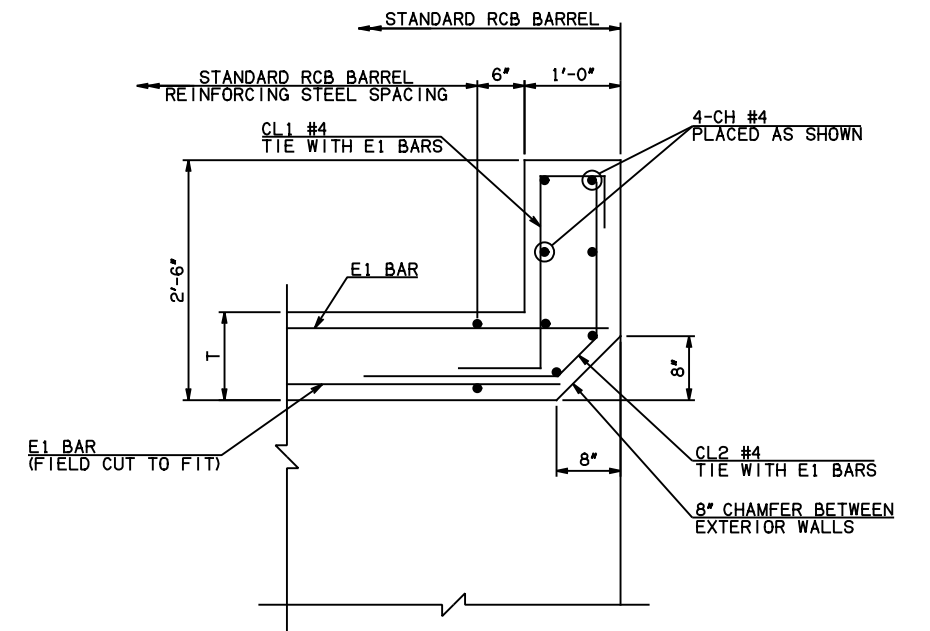
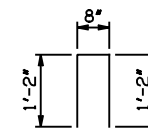
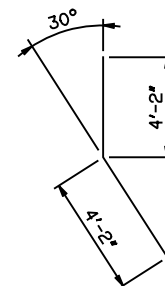
HEADWALL DETAIL AT EXTERIOR WALL



TYPICAL SECTION THRU WING



WL1 #7 x 14'-5"
WL2 #5 x 10'-3"
WL3 #5 x 4'-8 1/2" AVG.



HEADWALL DETAIL AT MIDSPAN

APPROVED BY BRIDGE ENGINEER *Scott J. Smith* DATE 4/2/10

OKLAHOMA DEPT. OF TRANSPORTATION
BRIDGE STANDARD (ENGLISH)
RCB CULVERTS - END SECTION DETAILS
SINGLE CELL - 10'-0" HEIGHT - 0°
SHEET NO. 2 OF 2

2009 SPECIFICATIONS

RCB-E1-H10-0-2

01E

B-587E